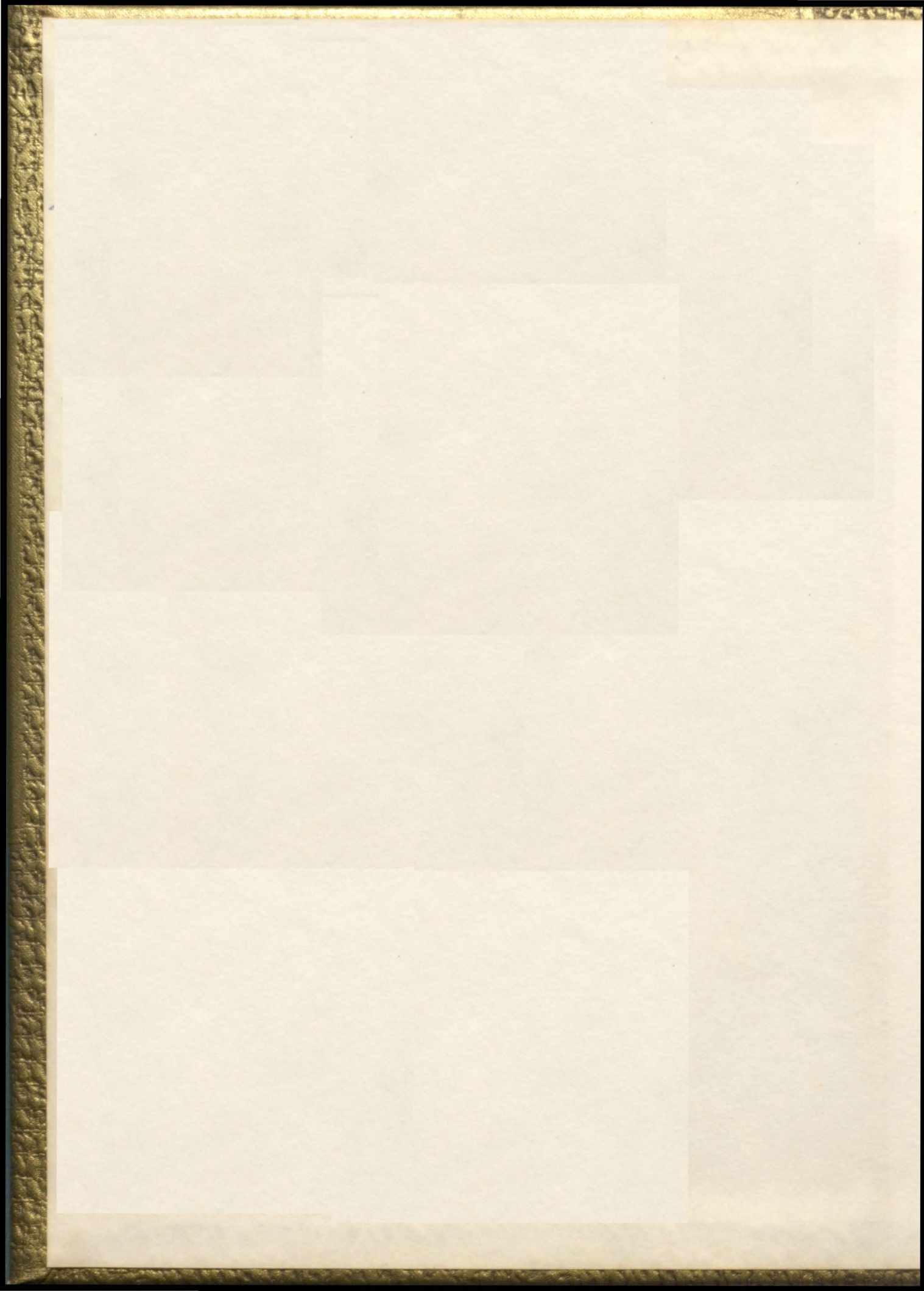


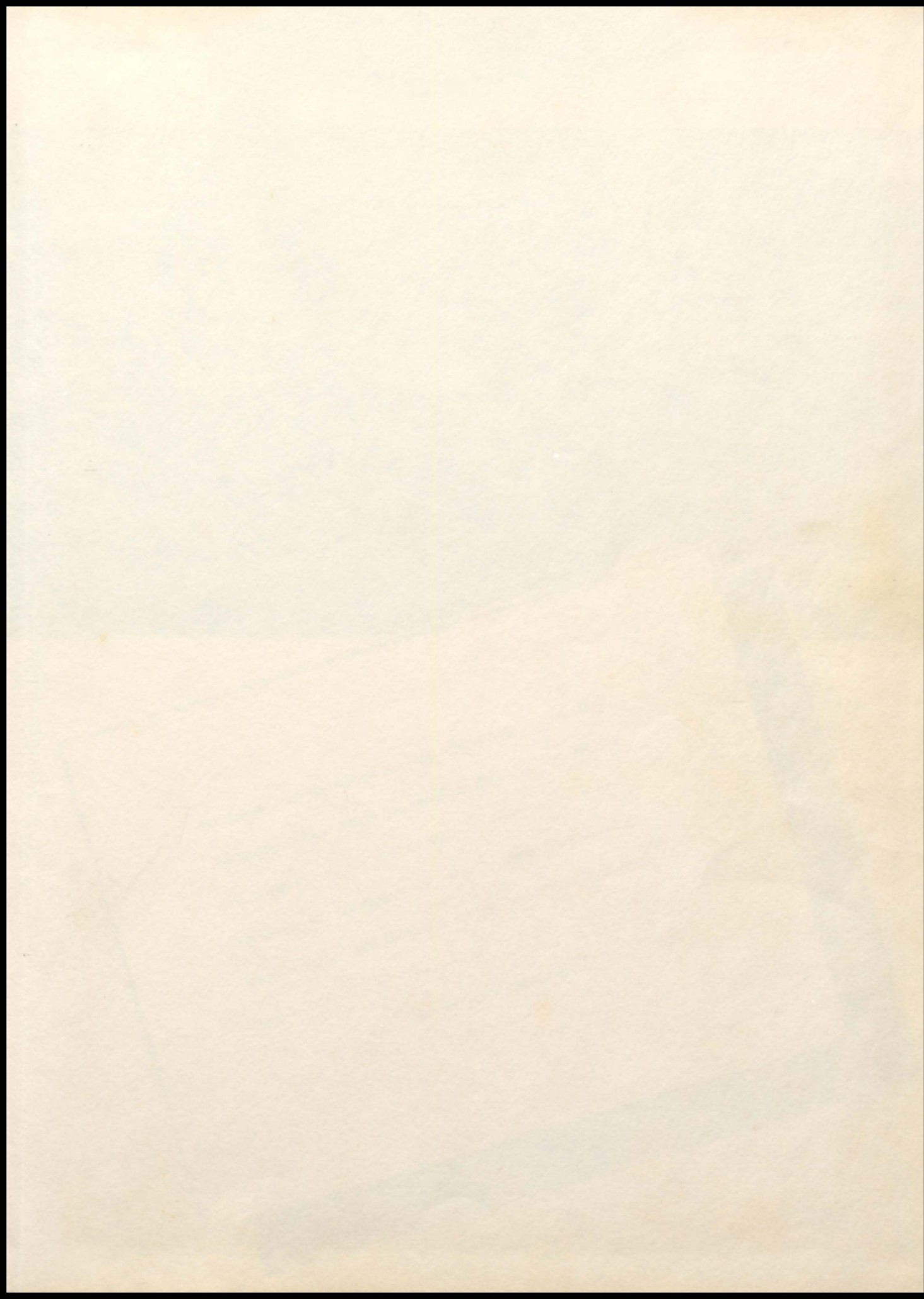
*The*

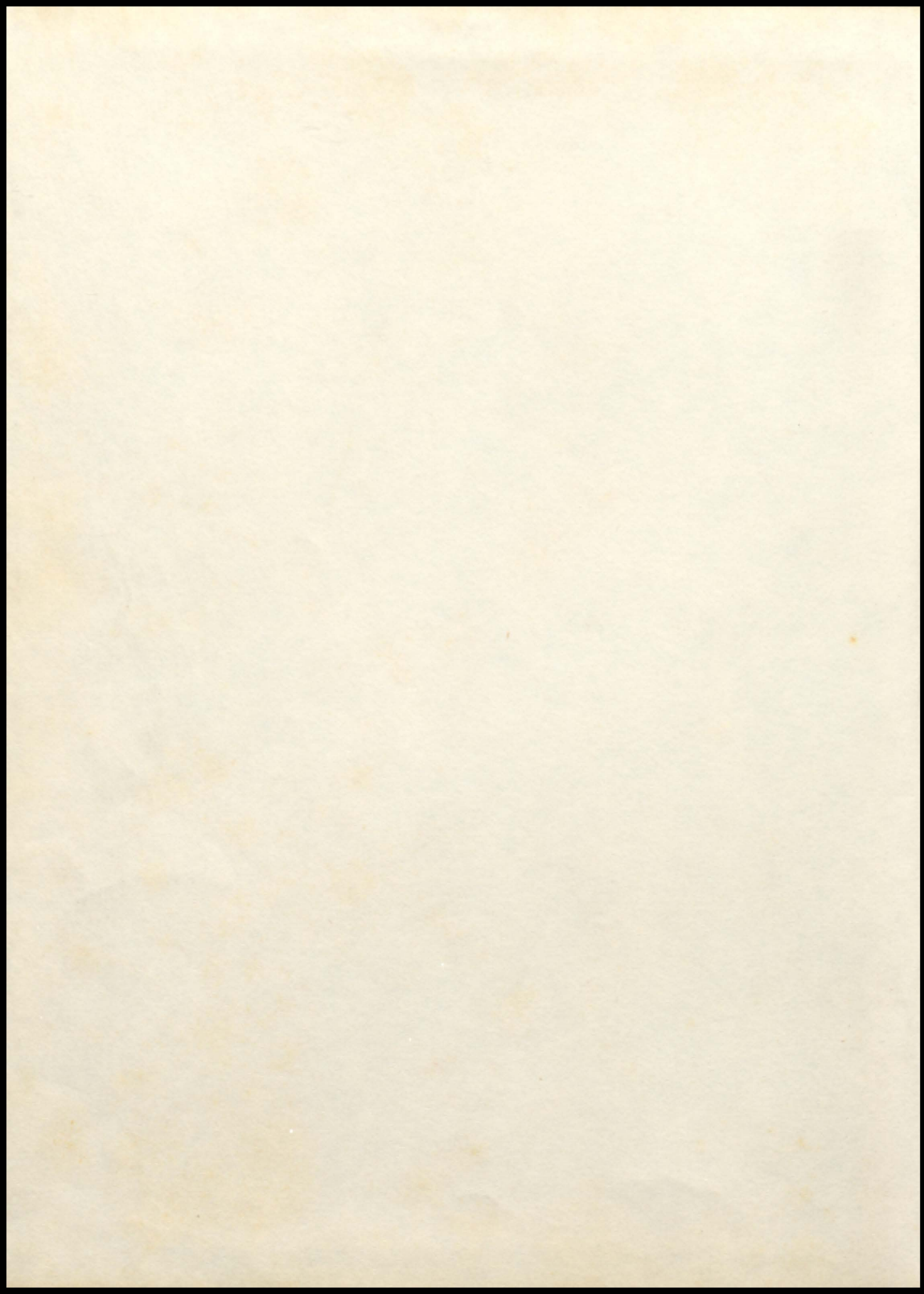
1956  
PELMEL





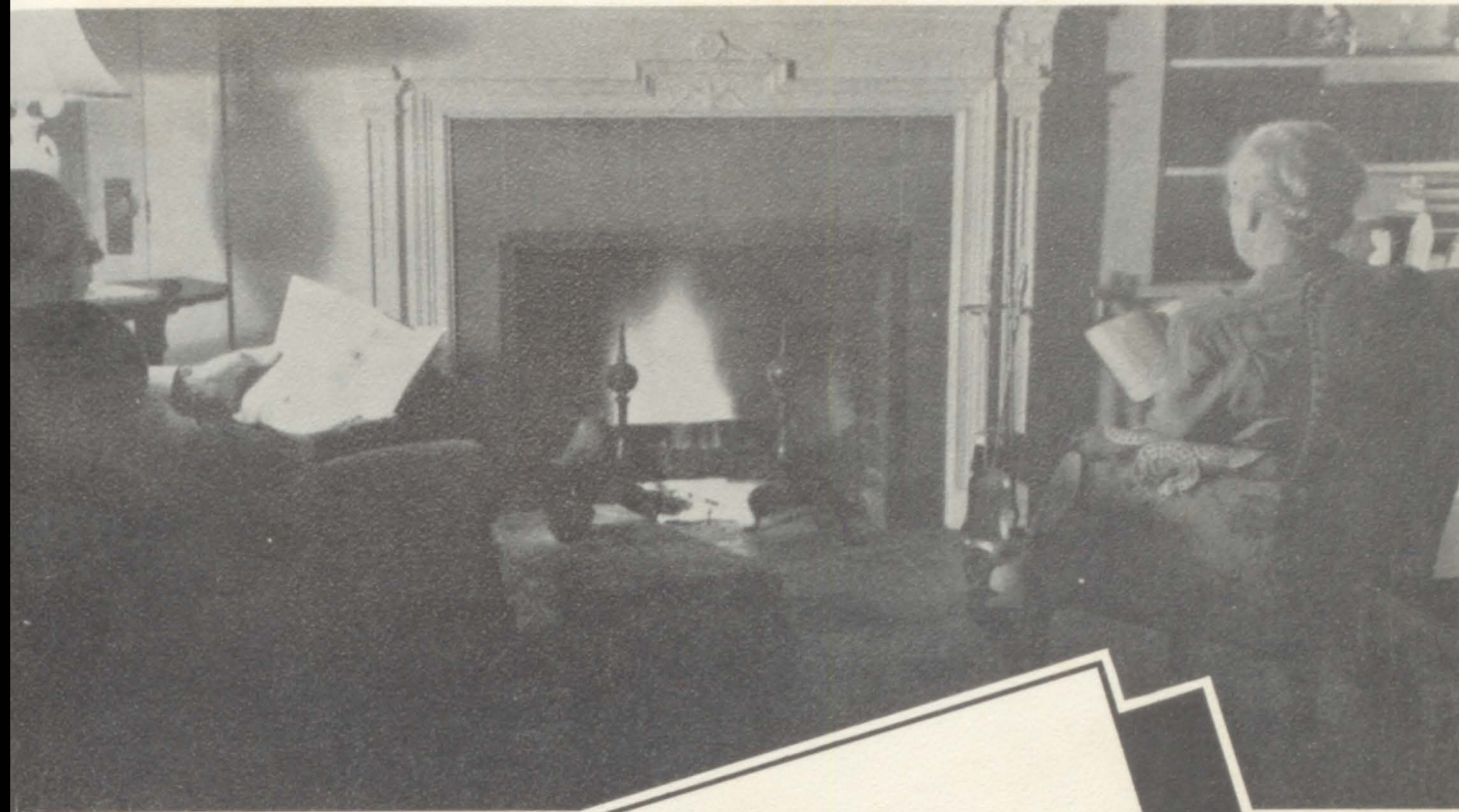









## DEDICATION



We pause near the end of our high school days---And clasp  
the treasured hand which has guided us thus far---We lift our  
hearts and voices in a song of praise-----  
To honor you, our parents, for love, for faith, for principles-  
Imbued in us from birth, for all that builds us---gifts from  
you-----  
Oh! That we prove our worth!





NANNETTE SIMS--CAROL HARRISON

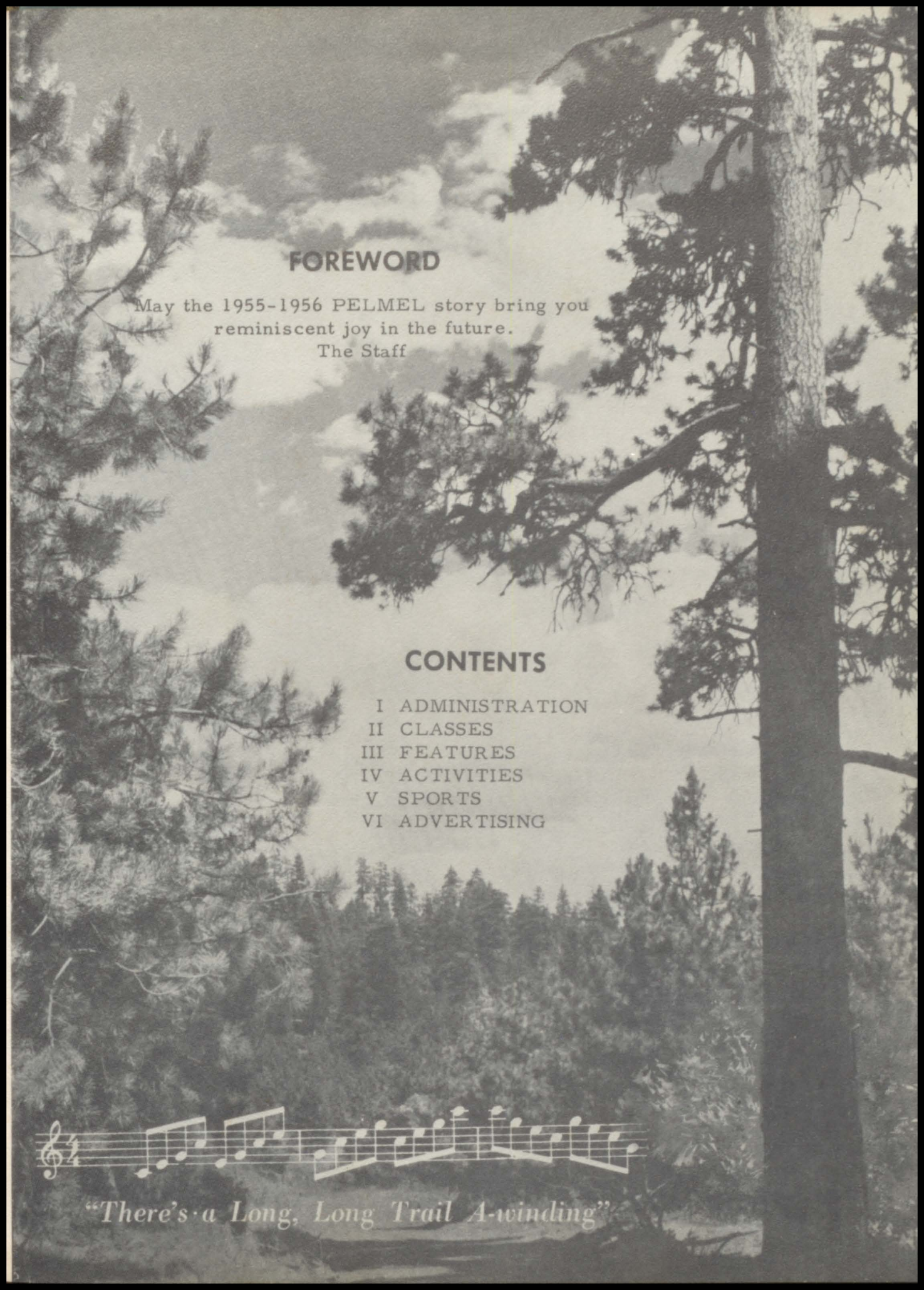
Co-Editors

**PELMEL PRESENTED BY SENIOR CLASS  
1955-1956**

PELL CITY HIGH SCHOOL

Pell City, Alabama





## FOREWORD

May the 1955-1956 PELMEL story bring you  
reminiscent joy in the future.

The Staff

## CONTENTS

- I ADMINISTRATION
- II CLASSES
- III FEATURES
- IV ACTIVITIES
- V SPORTS
- VI ADVERTISING



*"There's a Long, Long Trail A-winding"*



Mary Jones

Mrs. Spence

PAD

Solid Geo

А А А А А А А А А А

## FACULTY



## OUR FACULTY

MR. E. H. CHILDS  
Principal



MR. L. E. WOEFLIN  
Band Director



MRS. MIRIAM CHILDS  
Librarian



MR. C. C. LEE JR.  
English



MISS NIOMA LEE  
English



MISS BEATRICE ALEXANDER  
History



MR. T. W. ROGERS  
Assistant Coach



MRS. DORTHY MAYS  
Art, Ceramics





MRS. ELIZABETH STARNES  
English, History



MRS. CORINNE JACKSON  
Math



MRS. FAYE WHITTLE  
Commercial



MR. JOHN SLOVENSKY  
Science



MR. WILL GLOVER  
Coach



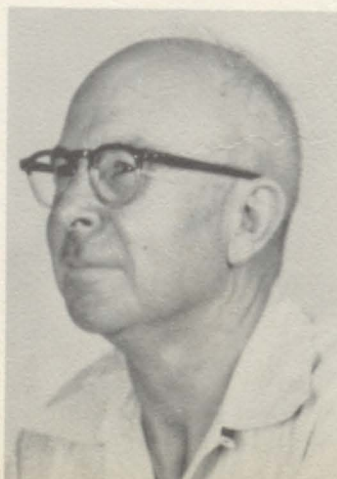
MRS. FRANCES COLEMAN  
Physical Education



MR. LESTER BRYANT  
Math



MR. J. W. LOCKE  
Agriculture



MRS. GRACE LOCKE  
Home Economics







**SENIORS**





## SENIOR CLASS OFFICERS

JERRY SPRUIELL - - - - - Vice President  
JEAN WILCOX - - - - - Treasurer  
JACK WILLIS - Student Council Representative  
CARLTON MEEHAN - - - - - President  
MARTHA ROPER - - - - - Secretary





JIMMY ALVERSON  
"Nig"

Football, 4 years; Basketball, 2 years; Science Club; Recreation Club; Letter Club; 4-H Club; Baseball, 1 year.

JANICE CAROL BASWELL  
"Nut"

Recreation Club; Glee Club; Homecoming Queen, 1954-55; Vice President of FTA; 4-H Club.



GLORIA ANN BEAVERS  
"Gabby"

Glee Club; Beta Club; Recreation Club; Assistant Art Editor for Spotlight Staff; 4-H Club.



MARTHA FAYE BISHOP  
"Bishop"

Student Council; Beta Club; Pelmel Staff; Glee Club; Recreation Club; FTA Club; FHA Club; 4-H Club.

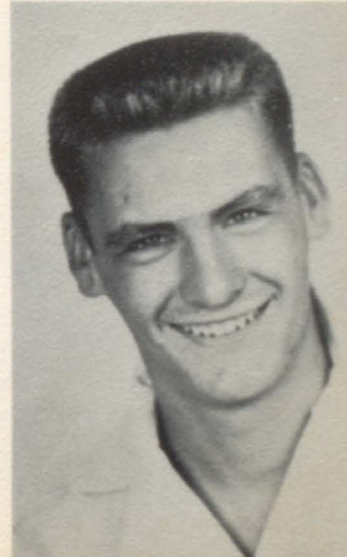


JALTA MARILYN BLACK  
"Bickus"

4-H Club; FHA, County Vice President; FTA Reporter; Spotlight Staff.

TARRICE BRAZIER  
"Brazier"

Science Club; Spotlight (Tatler); Student Council Treasurer, 2 years; Annual Aide; Beta Club.







HOWARD BROWN  
"Brownie"

Science Club; Bus Driver.

GAIL BURNS  
"Gail"

Bible Study Club; Glee Club.



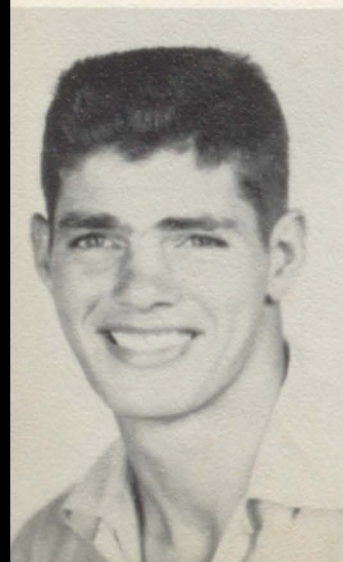
GLENDAL CALDWELL  
"Glenda"

Transfer from Leeds.



GENE CASTLEBERRY  
"Butchy"

Art Club; Science Club.



HORACE HERSHAL COMPTON  
"Wolf"

Letter Club; FFA; Recreation Club; 4-H Club.

SAMME SUE CORNET  
"Sam"

Recreation Club; Dramatics Club; 4-H Club;  
Assistant Editor of Spotlight; Assistant Manager of  
Pelmei; Glee Club; Student Council Reporter;  
"Tatler" Campus Whispers.







JOHNNY MACK COSPERS  
"Punk"

Letter Club; Football, 3 years; Recreation Club;  
4-H Club.

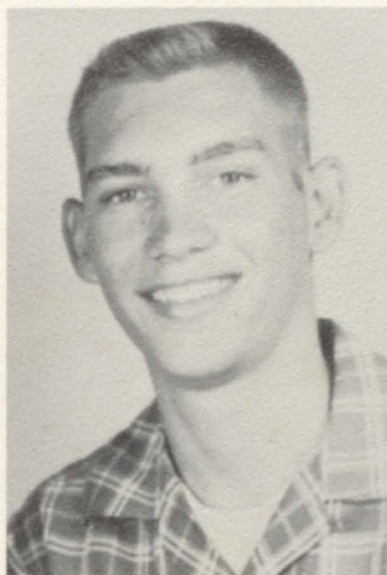


BILLY RAY COTTON  
"Bill"

Science Club; Recreation Club; FFA.

SAMUEL RAY DICKEY  
"Sam"

FFA; Football; Letter  
Club; Recreation Club;  
Photography Club.



CHLOE RACKLEY DOBY  
"Chloe"

Spotlight; Beta Club;  
Pelmel; Dramatics;  
Student Council; Glee  
Club; Spanish Club;  
4-H Club; Circulation  
Manager of Pelmel.



RICHARD DONAHOO  
"Richard"

FFA; Recreation Club; Letter Club; Football.

JOE EDMONDSON  
"Joe"

FFA; Recreation Club; Photography Club.







JOHN EDMONDSON

"John"

FFA; Recreation Club; Letter Club; Basketball;  
Football, 3 years; Photography Club.

JAMES BYRAN FUNDERBURG

"Buster"

FFA; Photography; Bus Drivers' Club; Basketball;  
4-H Club.



LYNN FUNDERBURG

"Taddy"

Transfer from Oxford.



WILLIAM FUNDERBURG

"Pete"

Letter Club; FFA; Basketball; Recreation  
Club; 4-H Club; Photography Club; Representative to National  
FFA Convention in  
Kansas City, Mo.



MARGARET FULMER

"Boggin"

Glee Club; Recreation Club.

BOBBY GALLUPS

"Bobby"

4-H Club; Recreation Club.







JAMES SHELDON GANN  
"Toley"

FFA; Recreation Club; Leadership Club.

NELDA FAYE GOODWIN  
"Pudin"

Beta Club; FHA; Miss FHA; Bible Study Club;  
Photography Club; Recreation Club; 4-H Club;  
Nursing Club; Most Outstanding and Best Dressed  
in FHA; McCall's Magazine Fashion Board  
Member; Pelmel Aide.



MADELEINE GAMBRELL  
"Madeleine"

Flower Garden Club;  
The Bible Club; 4-H  
Club; FHA.



THELMA GRAHAM  
"Thelma"

Beta Club; Glee Club;  
Spotlight Staff; Recreation Club; Student  
Council; 4-H Club.



RICHARD GREEN  
"Bunk"

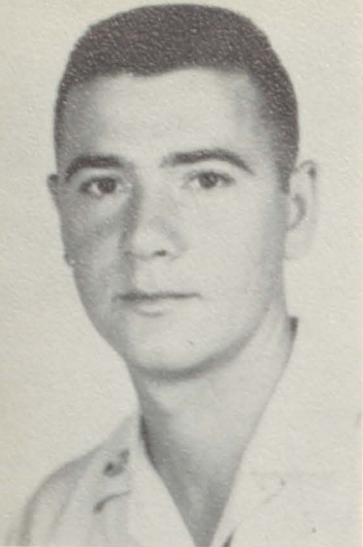
FFA; Photography Club; 4-H Club.

BARBARA HAMILTON  
"Babs"

Recreation Club; Glee Club; Spotlight Staff;  
4-H Club.







OWEN HARMON

"Toots"

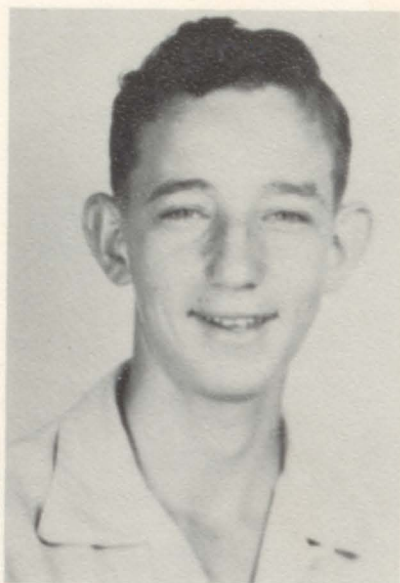
FFA; 4-H Club; Recreation Club; Photography Club; Basketball; Attended FFA Convention in Kansas City.



CAROL LYNN HARRISON

"Carol"

Spotlight Staff; Co-Editor Pelmel; Miss Pell High 1952-53; Student Council; Beta Club; Recreation Club; Dramatics Club; Glee Club.



J. P. HAYNES

"J. P."

Recreation Club; Photography Club.



JACQUELINE ANN

HAZELWOOD

"Jackie"

President Beta Club; Student Council; Head Cheerleader; Recreation Club; Dramatics Club; Glee Club; 4-H Club; Annual Aide; Spotlight Staff; Jr. Class Treasurer.



ULLIS HAZELWOOD

"Ullis"

FFA; Recreation Club.

JOY VIRGINIA HOWARD

"Joy"

Glee Club; Recreation Club.





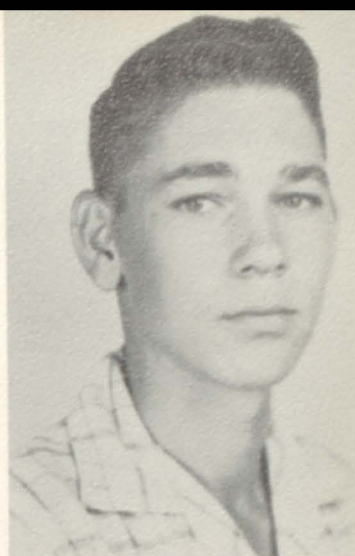


DON HYDE  
"Skin"

Letter Club; Spotlight; Spanish; Beta Club; 4-H Club; Science Club; Recreation Club.

MILTON HUGHES  
"Bull"

FFA; Science Club; Bus Driver; Art Club.



BOBBIE FAYE  
JOHNSON  
"Shorty"

Beta Club; FHA; Recreation Club; Photography Club; Student Council; 4-H Club.



LINDA SUE JONES  
"Dinky"

4-H Club; Glee Club; Recreation Club.

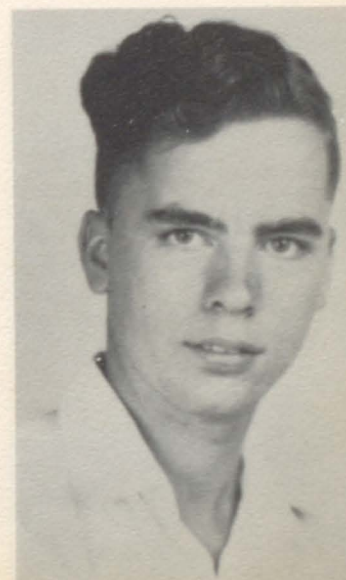


DOROTHY DEAN KEEBLER  
"Dot"

4-H Club; Glee Club; Cheerleader; Nurses Club; FTA; Photography Club.

LUTHER KNIGHT  
"Luke"

Art Club; Photography Club; FFA.







DEWEY LAIRMORE  
"Dewey"

FFA; Recreation Club.

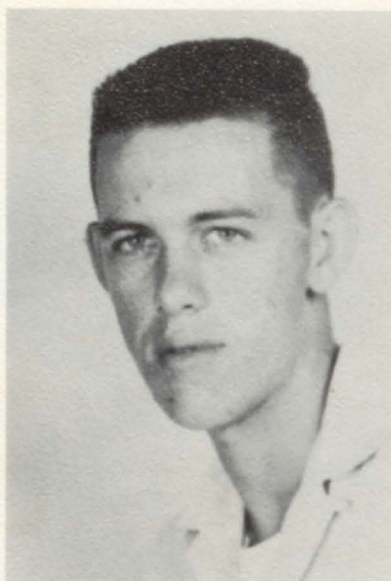
JAMES LAYTON  
"Jim"

FFA; Science Club.



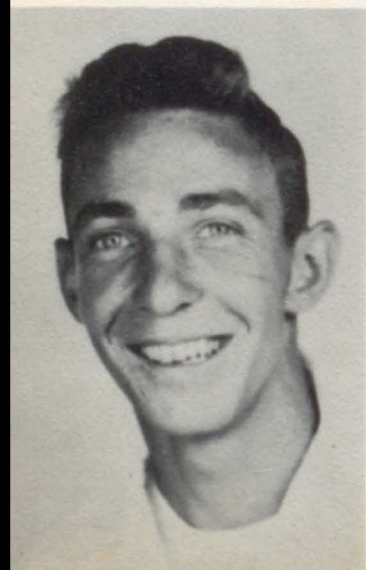
LLOYD LAYTON, JR.  
"Skeeter"

Science Club; FFA.



CARLTON MEEHAN  
"Heman"

Beta Club; Spanish Club;  
Dramatics Club; Spot-  
light Staff; Student  
Council; Annual Aide;  
President of Sophomore,  
Junior, and Senior  
Classes; Basketball;  
Science Club; Bus  
Driver.



ROY MEEKS  
"Slick"

Recreation Club; Photography Club; 4-H Club;  
FFA.

NORMA JEANN MORGAN  
"Jeann"

Glee Club; Recreation Club; FTA; FHA.







PATRICIA MORRIS  
"Patsy"

Beta Club; Recreation Club; Art Club; Spotlight Staff; 4-H Club.

ROSA KATHERINE MORTON  
"Kat"

4-H Club; Library Club; Dramatics Club; Spanish Club; Beta Club; Student Council; Spotlight Staff; Library Staff.



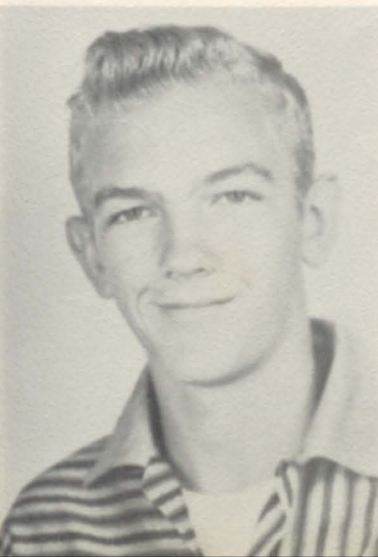
BETTY CHARLINE  
NEIGHBORS  
"Little Bit"

FTA; FHA; Recreation Club; 4-H Club.



SONJA JOAN OWENS  
"Joan"

Dramatic Club; Recreation Club; Glee Club.



RAYMOND REID  
"Mugs"

Science Club; Basketball; Art Club.

PATRICIA RICH  
"Trish"

FHA; Recreation Club; 4-H Club; Photography Club; Bible Study; Local and County FFA Sweetheart; Annual Aide; Nursing Club; Who's Who in FHA--Most Popular and Best Cook.







JUDY BLANKENSHIP ROBERTSON  
"Judy"

Beta Club; FHA; 4-H Club; Photography Club;  
Recreation Club; Student Council; Spotlight  
Staff.



MARTHA GRACE ROPER  
"Marti"

Senior Class Sec.; Glee Club; Junior Class Sec.;  
Bible Club; 4-H Club; Recreation Club; Assistant  
Editor of Spotlight; Beta Club.



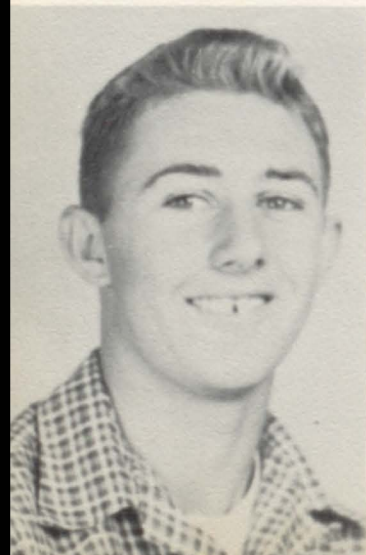
LYDONE SIMPKINS  
"Donkey"

4-H Club; FHA; FTA;  
Recreation Club; Bible  
Study.



NANNETTE SIMS  
"Nannie"

County Beta Club Pres-  
ident; FHA; Student  
Council; Glee Club;  
Dramatics Club; Recre-  
ation Club; Pelmel Co-  
Editor; Secretary of  
Sophomore Class.



ROBERT WAYNE SKELTON  
"Robert"

Letter Club; 4-H Club; Recreation Club; Football;  
Basketball.



CAROLYN SMITH  
"Carolyn"

Beta Club; FTA; Glee Club; FHA; Student Coun-  
cil; Bible Club; 4-H Club.





MARY LOU SMITH  
"Luler"

Art Club; Glee Club; Garden Club; FHA.

ZANE SMITH  
"Kilroy"

4-H Club; Student Council; Science Club; Letter Club; Football; Basketball.



WAYNE SPRADLEY  
"Alvin-Ho"

Art Club; Letter Club; Football; 4-H Club; FFA; Spotlight Staff; Captain of Football Team.



JERRY SPRUIELL  
"Buddy"

Beta Club; Letter Club; Basketball; Football; Spanish Club; Recreation Club; Vice President of Junior and Senior Classes; Annual Aide; 4-H Club; Science Club.



TEDDY STEPHENS  
"Ted"

FFA; Football; Letter Club; Photography Club; Bus Driver.

GLENDA SUE STEWART  
"Susie-Q"

Recreation Club; Glee Club; Spotlight Staff.







RONALD SUMNER  
"Rough"

Letter Club; Science Club; 4-H Club; Football.

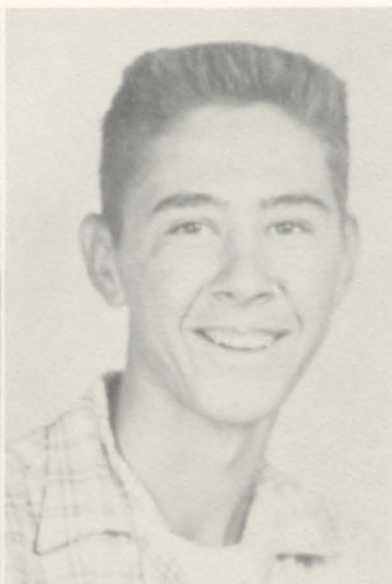
SARAH ANNE SYKES  
"Sally"

Recreation Club; Dramatics Club; 4-H Club;  
Glee Club; Beta Club; Society Editor--Spotlight;  
Annual Aide.



DORIS ANN TRUITT  
"Dat"

FTA; Annual Aide;  
Recreation Club; Glee  
Club; 4-H Club; Li-  
brary Staff; "Miss  
Homecoming" 1955-  
56.



JAMES TURNER  
"James"

Art Club; FFA; Photog-  
raphy Club; Bus Driver.

JOEL TURNER  
"Joel"

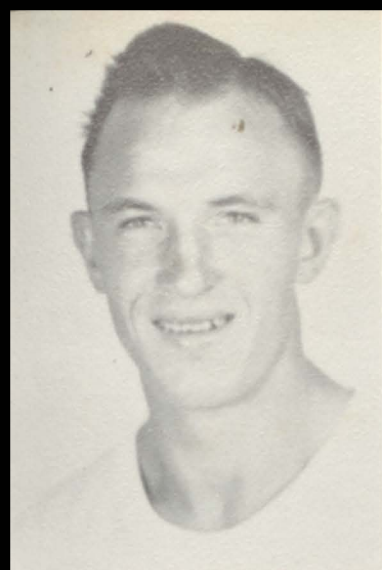
Beta Club; Science Club; Annual Aide; Basket-  
ball.

BOBBIE JEAN VAUGHN  
"Jean"

FHA; Recreation Club; 4-H Club; Spotlight Staff.







ROBERT VAUGHN  
"Bone Head"

Recreation Club; Photography Club; Football;  
Basketball; Letter Club.

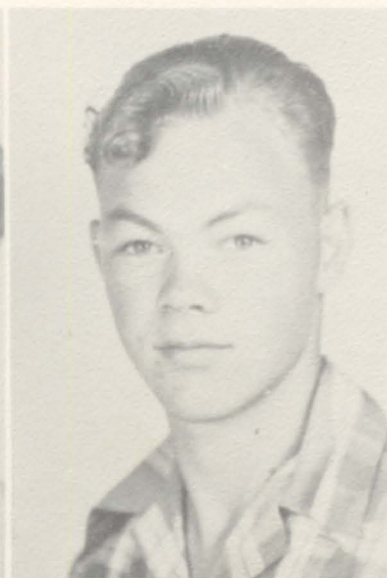
JOE ED VOSS  
"Voss"

4-H Club; Beta Club; Letter Club; Art Club;  
Spotlight Staff; Annual Aide; President of Student  
Council.



PATRICIA LAVONNE  
WATSON  
"Bonnie"

4-H Club; FHA; Flower  
and Garden Club.



ROY WATLINGTON  
"Rawhide"

Photography Club; FFA;  
Recreation Club.



BONNIE JEAN WILCOX  
"Jeannie"

Cheerleader; Pelmel Club; Beta Club; Spotlight  
Staff; Student Council; Recreation Club; Dramat-  
ics Club; Glee Club; Treasurer Senior Class.

MARY FAYE WILLIAMS HAISTEN  
"Faye"

4-H Club; Glee Club; Recreation Club; Nursing  
Club; FHA.







RHONDA SUE WILLIAMS  
"Sue"

Beta Club; Dramatics Club; Glee Club; Recreation Club; Spotlight Aide.

J. P. WILLINGHAM  
"J. P."

FFA; Photography Club; Assistant Reporter for FFA.



JACK WILLIS  
"Jack"

Beta Club; FFA; Student Council; Recreation Club; Photography Club.



MAUDIE FAITH  
WILSON  
"Faith"

4-H Club; Beta Club; Recreation Club; Student Council; Editor of Spotlight.



WENDELL WIGGINS  
"Speedy"

Bus Driver's Club; Science Club.

JEANETTE WHITE  
"Micky"

FTA; Glee Club; Recreation Club; Spotlight Staff; Beta Club.







ROSS WHITTEN  
"Ross"

Letter Club; FFA; 4-H Club; Football.



JO ANN YOUNG  
"Susie"

Glee Club; Recreation Club; Nursing Club; FHA Song Leader.



JIMMY YOUNGBLOOD  
"Trippi"

Basketball; FFA; Photography Club.

## SENIOR ACTIVITIES











Most Intellectual  
JACK WILLIS - MARTHA ROPER



Most Handsome  
OWEN HARMON

## WHO'S WHO



Most Beautiful  
PATSY MORRIS



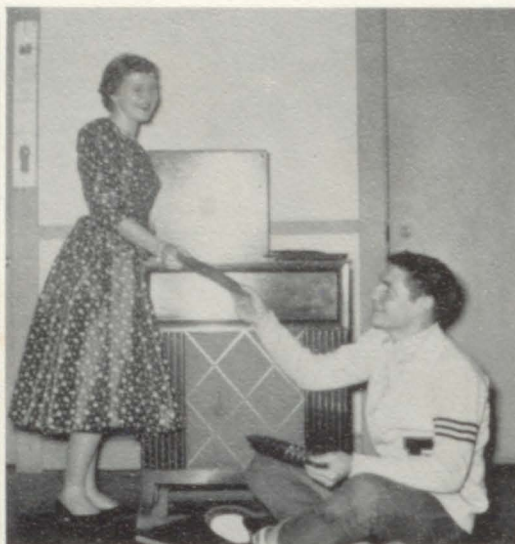
Most Likely to Succeed  
JOE EDMONDSON - NANNETTE SIMS





Wittiest  
WENDELL WIGGINS  
LYNN FUNDERBURG

Best Sport  
ROBERT SKELTON  
SUE STEWART



Most Athletic  
WAYNE SPRADLEY - JOAN OWEN

Best Personality  
ZANE SMITH - FAITH WILSON

Cutest  
JOE ED VOSS - JEAN WILCOX

Best All Around  
PUNK COSPER  
CHLOE DOBY

Most Talented  
GLORIA BEAVERS





Most Dependable  
TARRICE BRAZIER  
RHONDA WILLIAMS

Friendliest  
PETE FUNDERBURG  
MARY LOU SMITH



Most Popular  
JERRY SPRUIELL - JACKIE HAZELWOOD

Flirtiest  
CARLTON MEEHAN - JOY HOWARD

Most Courteous  
RAYMOND REID - THELMA GRAHAM



Most Dignified  
ROSS WHITTEN  
BARBARA HAMILTON

Neatness  
JIMMY ALVERSON  
JEANETTE WHITE



# THE CLASS HISTORY OF THE SENIOR CLASS OF 1956

THE SENIOR CLASS, that's us, propose a toast. . .

"To ourselves, " for the knowledge we have acquired, the good times we have had and all the trials and tribulations we have endured for the past twelve years. During this time we have discovered that our class has talent --the loafers are among the most ingenious, the scholars are the most intelligent.

In the autumn of 1944 a group of small boys and girls assembled in six different classrooms, in six different schools--Pell City, Eden, Cropwell, Coal City, Easonville, and Avondale. They assembled for the purpose of beginning an education.

In 1952 the six groups combined here at Pell High to make what we now call the Class of 1956! We had come a long way but we still had a huge task before us. At that time we had no way of knowing whether or not we could all stick together until we had completed our task. Now, we are proud to say that We Have Done This Job. Some who started out with us have dropped out along the way, and a few new ones have come to us at various times, but most of us have come along together for the last four years, and we have learned to love each other almost as if we were brothers and sisters.

In the tenth year of our long journey, we all became fanatics on the subjects of Home Economics and Biology. By the end of the year, we had classified every bug known to human beings, and dissected all the frogs in the state of Alabama. The future housewives were kept busy hemstitching pillow cases for their "panic boxes." Cooking gave all of us slight cases of indigestion and several times our menu was burned fingers on rye, and the days when we "operated" on earth worms and had hash in the lunchroom seemed to us almost unbearable, but we lived through it all and now the memories are very dear to us.

There have been times when our work seemed to us impossible--such as learning ABC's, algebra, physics, chemistry, participles, gerunds, keeping up in typing, reading our literature every night while looking at television--running by Sam's and many other things our social life demanded.

We have also lived through a cold war that will be in every history book of the future. Some boys of our class entered the service. We are proud of them and all others who fought for us; we are glad too, that some of them have come back to complete their education.

Now it has come--the year we've been dreaming of, but I'm not so sure we're glad, because when we really begin to think about it, we have been having the times of our lives. We have really had fun participating in the different activities of our school. It has given us an idea of how life will be on our own, where sharing and working with others depend so much on our success.

This year's class will go down in the history of our school as one of the finest ever at this institution. It is one of the largest senior classes in the history of Pell City High. We have all tried to work together for the betterment of our school and our class.

To each and every official in this school we wish to offer our gratitude for your untiring efforts put forth in our behalf; we realize that you have been an inspiration to us, and whatever we may accomplish, your wonderful faith in us will play a great part.



# THE LAST WILL AND TESTAMENT OF THE SENIOR CLASS OF 1956

We, the senior class of Pell City High School, county of St. Clair, and state of Alabama, being of sane mind and sound bodies, having completed all our work and with no uncertainty of graduation, do hereby, bequeath and devise our last will and testament.

We appoint as executors of this will those members of the class who, for reasons best known to themselves and to the faculty, shall continue with this institution for another year.

Item 1: To the Freshman Class we leave our strong box containing the records of our various achievements, social and athletic. They'll help when the going seems rough.

Item 2: To the Sophomores we leave our school spirit and the honoring of serving at the traditional Junior-Senior Banquet.

Item 3: To the Juniors we leave our place in ole Pell High and our best wishes that you will make it the best place in the United States.

Item 4: To our principal, Mr. Childs, our heartfelt thanks for his keen interest in each of us and his clever understanding of our problems.

Item 5: To our teachers, our love and deep appreciation for their advice and guidance in all our activities and varied interests.

Item 6: The seniors girls who are married or engaged leave their ability to catch a man to all those who are willing to try.

Item 7: Buddy Spruiell leaves his high-scoring ability on the football field to "Boot" Rich.

Item 8: Chloe Doby leaves her good figure to all hopeful Junior maidens.

Item 9: Owen Harmon leaves his ability to get along with the women to Homer Bowman.

Item 10: Janice Baswell wills her energy and vitality to Margaret Garrison.

Item 11: Carlton Meehan passes his alarm clock to Carolyn Kincaid in hopes that it will get her to school on time more times than it did him.

Item 12: Katherine Morton leaves her loving cups, medals, and ribbons to Emeris Bowman.

Item 13: Carol Harrison leaves her "well beaten" path to Mrs. Jackson's room to the next Pelmel Editor.

Item 14: Wendell Wiggins wills his dry, dull way to Terry Robertson.

Item 15: Raymond Reid leaves his calculating mind to Charles Robinson.

Katherine Morton  
Testator





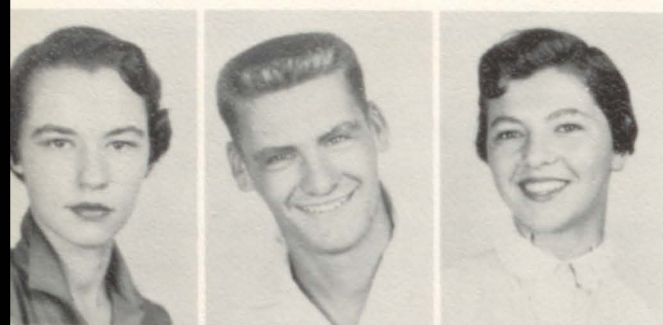
Katherine Morton  
Delegate to National 4-H Congress  
in Chicago, Illinois



William Funderburg - Owen Harmon  
Delegates to National F. F. A. Convention  
in Kansas City, Missouri



Nannette Sims  
President of St. Clair  
County Beta Club

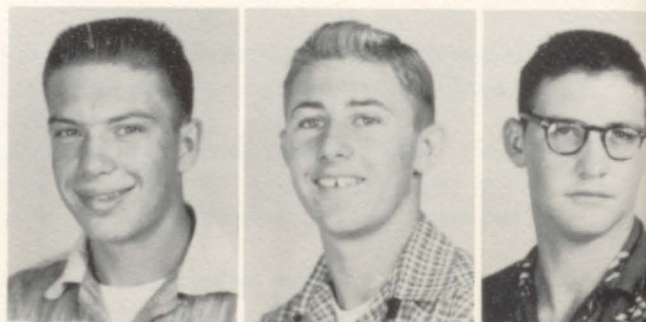


Chloe Doby Tarrice Brazier, Sally Sykes.  
Delegates to Science Camp at the Florida  
State University, Tallahassee Florida.

Jacqueline Hazelwood  
D. A. R. Citizenship Girl



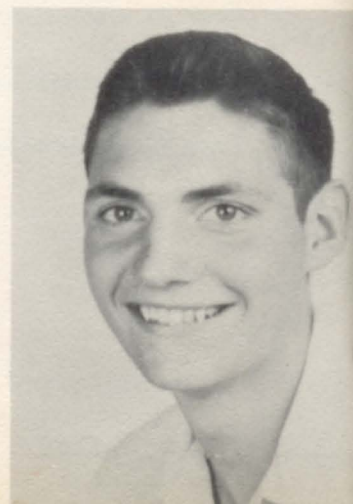
## HONOR PAGE



Jerry Spruiell, Robert Skelton, Jimmy Alverson  
All County Basketball Players

Jerry and Robert received grant-in-aid  
scholarships to the University of Alabama.  
Jimmy received the same scholarship to  
Mississippi Southern.

Zane Smith  
Candidate to Boys' State







## ANNUAL STAFF

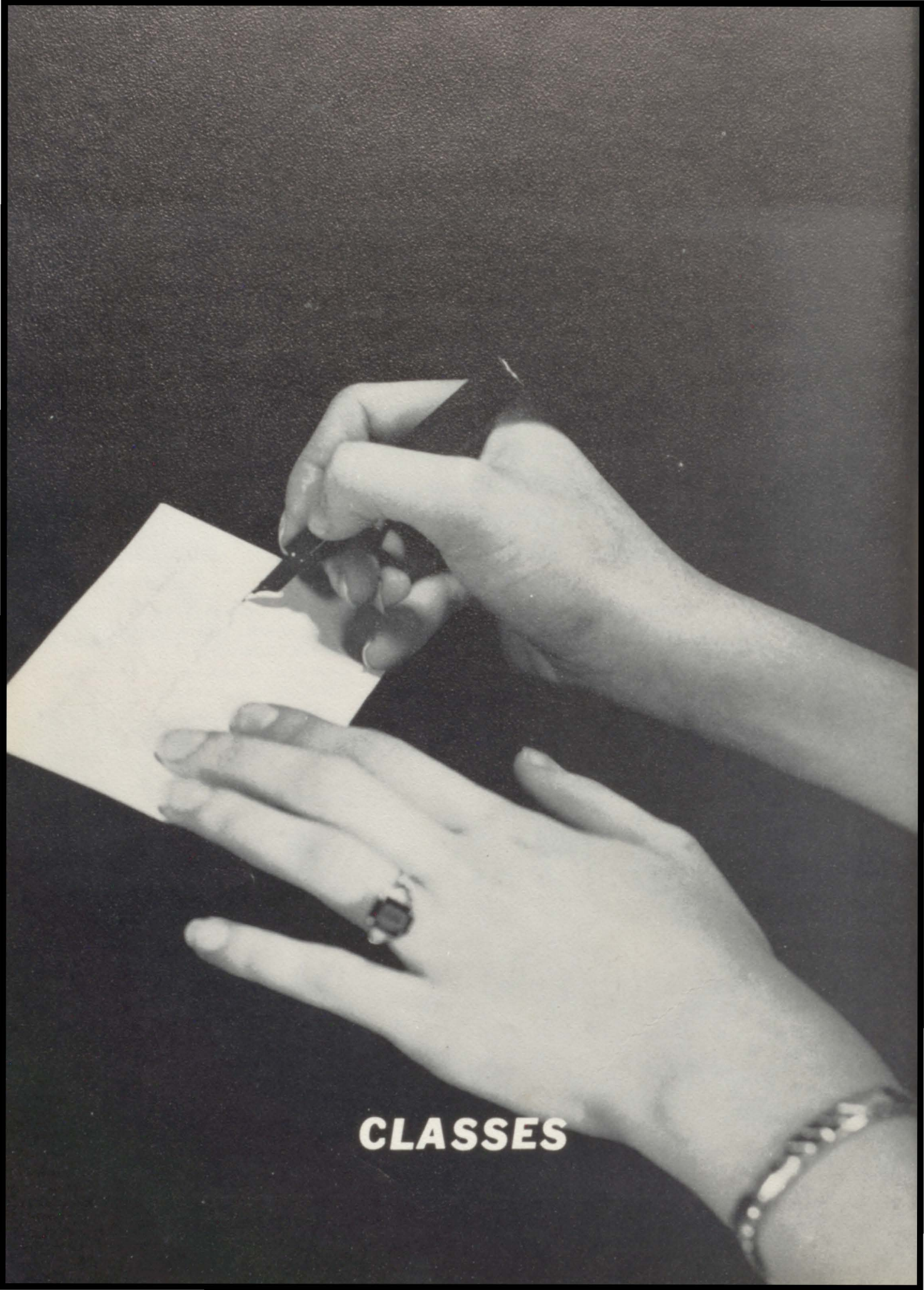
Seated, left to right; Nannette Sims, Co-Editor; Doris Ann Truitt, Typist; Carol Harrison, Editor.  
 Standing: Chloe Doby, Circulation; Samme Cornett, Business Manager; Jean Wilcox, Business Manager;  
 Joe Ed Voss, Sports; Mrs. Corinne Jackson, Sponsor; Tarrice Brazier, Assistant Circulation.



## ANNUAL AIDES

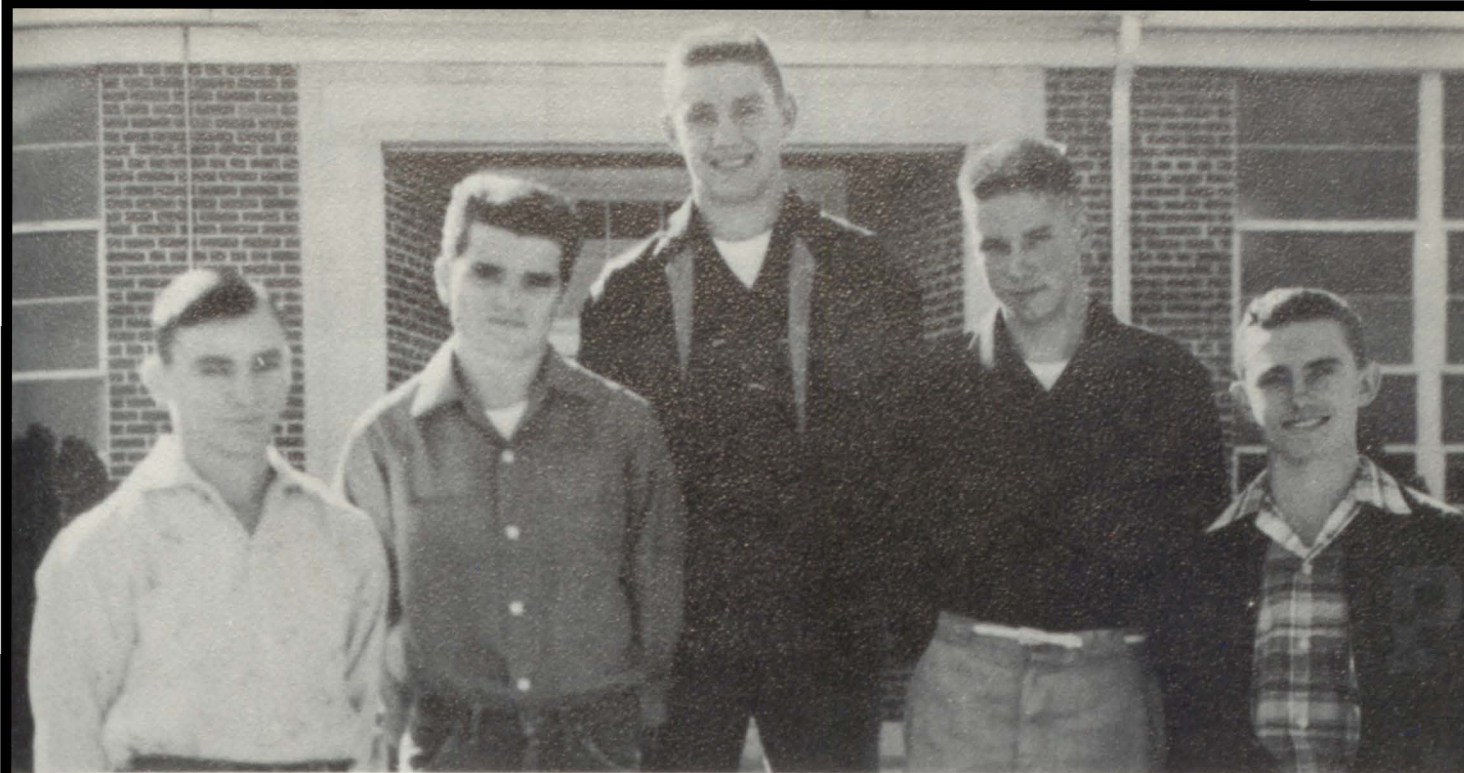
Standing, left to right: Thelma Graham, Barbara Hamilton, Patricia Rich, Nelda Goodwin, Joy Howard,  
 Joan Owen, Owen Harmon, Rhonda Williams, Jackie Hazelwood, Sallye Sykes, Jeanette White, Gloria  
 Beavers, Don Hyde.





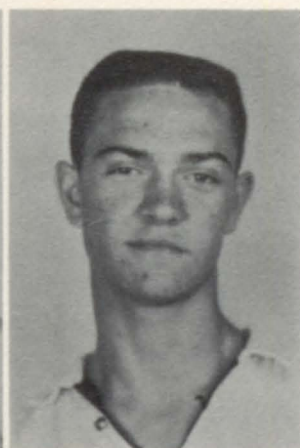
**CLASSES**





## JUNIOR CLASS OFFICERS

TEDDY HIGGINBOTHAM - - - - - Treasurer  
 RODDIE SLOVENSKY - - - - - Vice President  
 VALDOR HALL - - - - - President  
 VERBON HALL - - - - - Representative  
 LORENZO WHEELER - - - - - Secretary



CAROLYN ADAMS  
 SYLVIA ADAMS  
 WAYNE ADAMS  
 MARY NELL ALLEN



BOBBY BANKS  
 NELDA SUE BARBER  
 EMERIS BOWMAN  
 HOMER BOWMAN



LINDA BOWMAN  
LINDA BOWMAN  
CHARLES BROWN



EUGENE BYNUM  
EUGENE CASTLEBERRY  
PEARLEAN CASTLEBERRY



DOUGLAS CLACKLEY  
JOHNNY CLEMENTS  
JOHN CONNOR



JIMMY COTTON  
MILTON COX  
SAMUEL CRUMP





JO ANN DAVIS  
JACKIE DONAHOO  
JUDY DOROUGH



ELVIN DOWNEY  
MERRELL DYE  
H. G. FRAM, JR.



BARBARA SUE FRAZIER  
BETTY LOU FRAZIER  
BARBA ANN FRAZIER



BETTY GARRETT  
JOYCE GIBBS  
JEANETTE GOODGAME



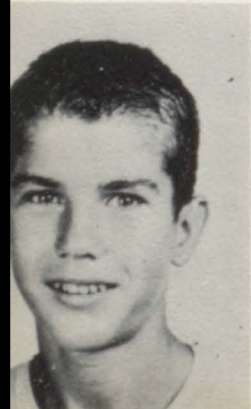
CHESTER GRAHAM  
FRANCES GRAHAM  
CURTIS GRAY



GENE GRIFFITT  
JUANITA GRIFFITT  
DORIS FAYE GUY



VALDOR HALL  
VERBON HALL  
ANNETTE HAMILTON



RAY HANNAH  
PHILLIP HARMON  
CARL HAZELWOOD



BONNIE HESTERLY  
TEDDY HIGGINBOTHAM  
JERRY JOE HOWARD



MARY JIM INGRAM  
LENORE JOHNSON  
AGNES JONES



CAROLYN KINCAID  
GLENDA KINCAID  
HOMER LAYTON



CHARLES EDWARD LEE  
BLANCHE LEWIS  
BOBBY LLOYD



JEANETTE MANNING  
SANDRA MASHBURN  
JIMMIE LOW MASTERS



VIRGIL McCORD  
BENNY MULVEHILL  
GENE O'BARR



FRANK PEOPLES  
ANNETTE PEMBERTON  
JO ANN PHILLIPS



PHILLIP POLK  
MARVIN POPE  
BILL PURVIS



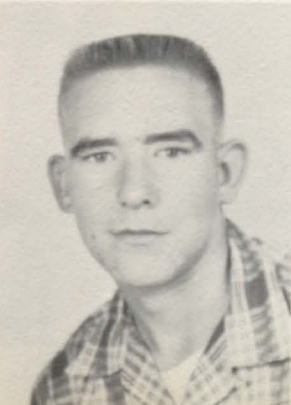
CHARLES RICH  
DOUGLAS RICH  
EVELYN RICH



GLEND A RICH  
CHARLES ROBINSON  
BETTY JEAN ROE



RODDIE SLOVENSKY  
DORIS SMITH  
EARL SMITH



LAQUITA SMITH  
RALPH SMITH  
SARA SPRADLIN



BOBBIE ST. JOHN  
DONALD STOKES  
ANN THOMAS



LAURA TOLLISON  
JERRY TRUITT  
MARY LYNN VINES



BILLY WALKER  
LAMARR WALKER  
LORENZO WHEELER



JANET WIGGINS  
NEWTON WILLIAMSON  
RAYMOND WILLINGHAM



## SOPHOMORE

Charlotte Abercrombia  
Johnny Alexander  
Alice Armstrong  
Jeanette Arnold

Jimmy Ball  
Anna Faye Bannister  
Shirley Bannister  
Marie Barber

Robert Barber  
Wynell Barber  
Shirley Baxter  
Lesley Bishop

Carl Blankenship  
Nancy Blankenship  
Jimmy Brown  
Johnny Brown

Patsy Bryant  
Paul Bryant  
Bobby Burnham  
Catherine Carden

Wayman Carlisle  
Gaynell Carroll  
Betty Jean Castleberry  
Brenda Collett



Betty Jo Crump  
Josephine Crump  
Paul Davis  
Everett Dill



Murl Dorough  
Rosemary Edmondson  
Dickey Ely  
Jack Finch



Joyce Garner  
Margaret Garrison  
Hank Gary  
Gale George



Jean Goodgame  
Marie Goodwin  
Lelwin Gore  
Norma Jean Graham



Patricia Gravette  
Patricia Hall  
Rogene Hannah  
Avis Marie Hardman



Gerald Hardwich  
Rachel Hardwich  
Sam Harmon  
Linda Harris





Michael Harvey  
Reggie Hazelwood  
Grant Hazelwood  
Thurman Henninger

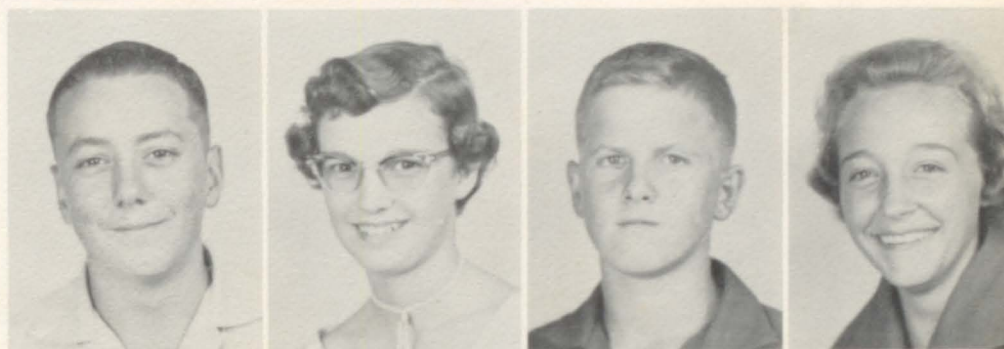


Kenneth Hewitt  
Sara Hill  
Betty Jo Hollis  
Claude Hollis

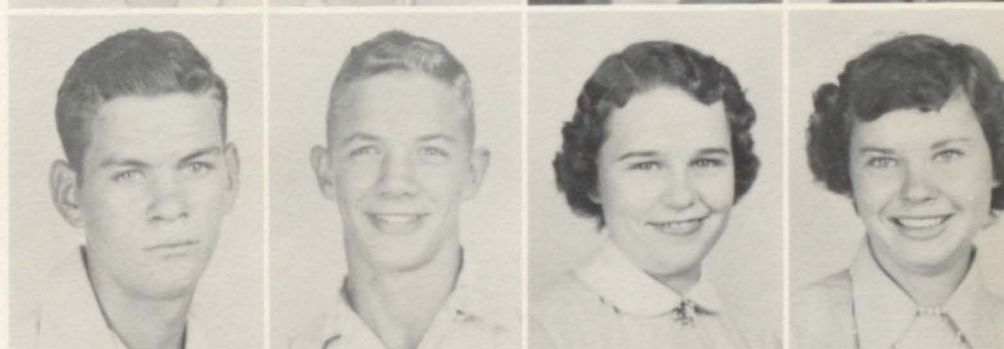


Cathleen Isbell  
Gladys Jackson  
Sandra Johnson  
Jollie Kidd

Kenneth Ray King  
Linda Lawrence  
Dale Lee  
Frances Lee



Johnny Lee  
Rudolph Lee  
Dorothy Macon  
Billie Sue Mathis



William McCullough  
Lee Meeks  
Gail Merryman  
Marilyn Miller

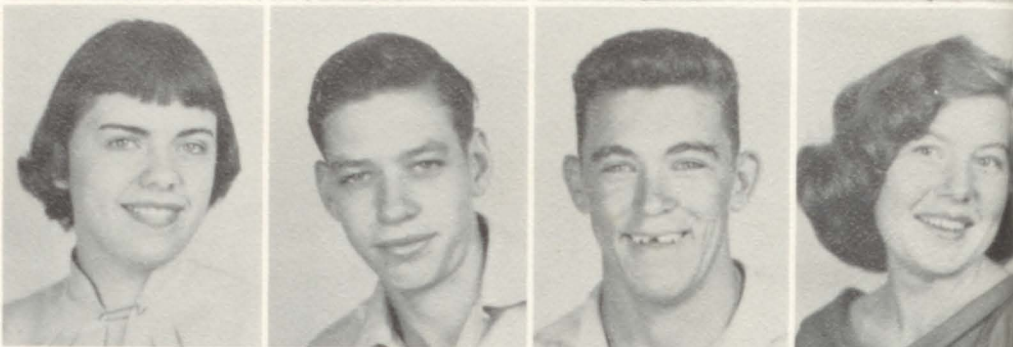




Jerry Neil Morrow  
 Billy Moss  
 Billy Ray Newton  
 Faye Parker



Ann Parmer  
 Jimmy Partridge  
 Teddy Patterson  
 Betty Peavy



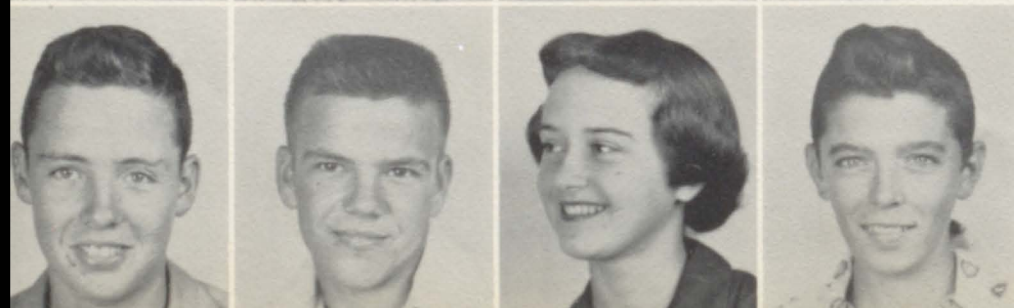
Gladys Peavy  
 Ellis Perrin  
 Betty Jo Perry  
 William Lee Phillips



Lelan Putman  
 Pat Reece  
 Jean Rich  
 Howard Richardson



Shaugheen Riley  
 Jimmy Roberts  
 Jane Robertson  
 Terry Robertson



W.C. Roe  
 Douglas Roney  
 Faye Rooker  
 Jimmy Simpkins





Robinette Speer  
Bobby Smith  
Barbara Smith  
Joe Smith



Jacky Lane Snow  
Jacky Stewart  
Slona Stewart  
Ruth Vardaman



Barbara Vines  
Faye Wells Walker  
Robert Wallis  
Delores Watson

Jack Weaver  
Rosa Ann Wheeler  
Frank Whitten  
Betty Williams



Dwight Williams  
Betty Williamson  
Harold Willingham  
Bobby Wright



Not Shown:  
John Gann  
Lenzy Holtbrooks  
Mattie Pearl Isbell  
Roy Jackson

Rebecca Newsome  
Wayne Richey  
Richard Williamson



## FRESHMEN

Charles Barber  
Jack Barber  
Boyd Barnette  
Jerry Bell  
Mary Bice

Patricia Blankenship  
Patty Bowman  
Barbara Brown  
Sharon Burns  
J. W. Carraker

Henry Cason  
Arlie Castleberry  
William Castleberry  
Steve Chambers  
Doris Chambers

Thomas Chapman  
Leon Clements  
Mary Clements  
Linda Coshatt  
Bonnie Davis

Tommy Davis  
Joseph Doby  
Billy Eubanks  
Marie Evans  
Frank Finch

Patsy Funderburg  
Brenda Gallups  
Joe Golden  
Bernice Goodgame  
Fate Gossett



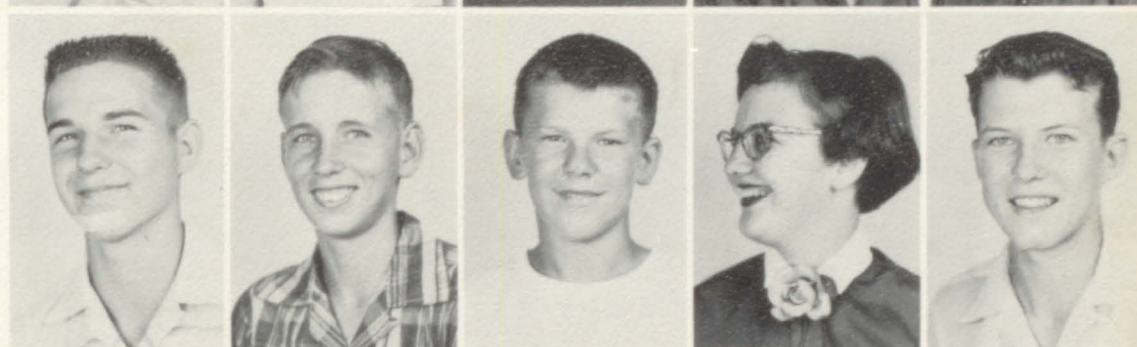
Bennie Gower  
Barbara Graham  
Katie Gray  
Carly Joe Green  
Billy Griffitt



Patricia Guff  
Martha Haistin  
Willie Hallman  
Elissa Hamilton  
Patricia Hamilton



Ludford Harmon  
Bud Haynes  
John Henniger  
Carolyn Hesterly  
Joe Hodo



Jack Holmes  
Dimples Howard  
Helen Howard  
Janice Isbell  
Juanita Jackson



Sherbie Jackson  
Juanita Johnson  
Alta Kerr  
Willama Kerr  
Sylvia Lambert



Alice Layton  
Robert Layton  
Barbara Lewis  
Rodney Love  
John Luker

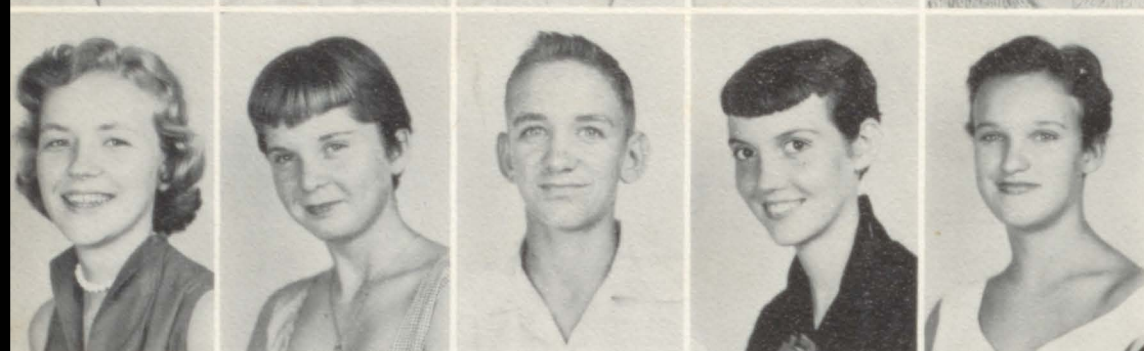




Betty Macon  
Martha Manning  
Mary McDanish  
Carole Pemberton  
Linda Polk



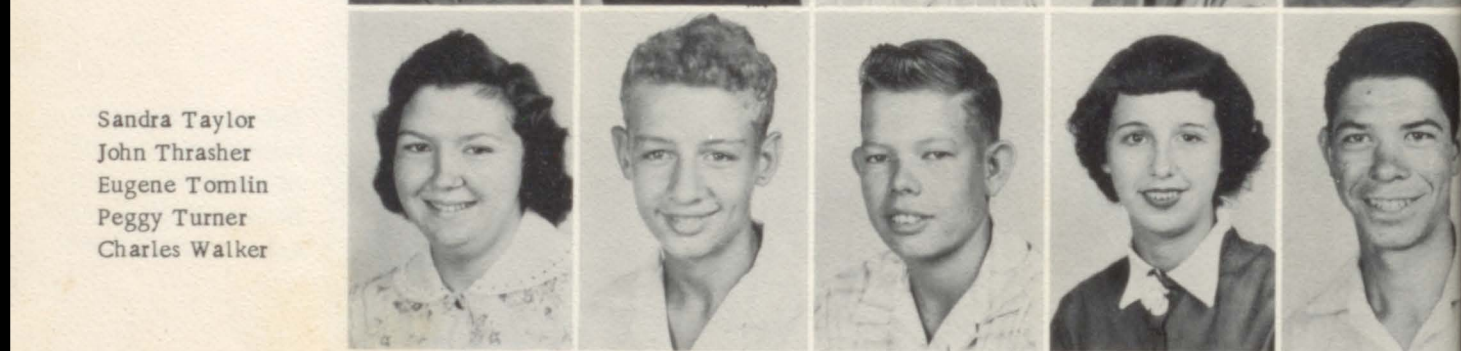
Faye Richardson  
Carole Roberts  
Billy Sanford  
Elaine Savage  
Paul Selby



Sandra Sims  
Bobbie Smith  
Jott Smith  
Kay Smith  
Karen Spradley



Ronald Stevens  
Sandra Stevens  
Charles Stewart  
Mary Stokes  
Judy Sumners



Sandra Taylor  
John Thrasher  
Eugene Tomlin  
Peggy Turner  
Charles Walker



Sue Walker  
Johnny Wells  
Kay Willis  
Faye Wright  
Martha Yarbrough





**ORGANIZATIONS**





## STUDENT COUNCIL

Mr. Slovensky - - - - -	Faculty Advisor
Bobby Burnham - - - - -	Secretary
Ann Thomas - - - - -	Vice President
Joe Ed Voss - - - - -	President
Tarrice Brazier - - - - -	Treasurer



Dear Fellow Students,

I shall always remember the honor you placed upon me last May in electing me your president for the term '55-'56. I have really enjoyed working with you this year and appreciate the co-operation you have given me.

Being your president has taught me something in leadership, co-operation, and has given me experience in taking and carrying out responsibilities.

I wish all of you happiness and success throughout life.

*Joe Ed Voss*





## STUDENT COUNCIL REPRESENTATIVES

Front row, left to right: Ann Palmer, Pat Hamilton, Rosemary Edmondson, Katherine Morton, Jo Ann Davis, Jackie Hazelwood. Second row: Robert Layton, Bobby Burnham, Verbon Hall, Ann Thomas, Joan Owen, Joe Ed Voss, Faith Wilson, Samme Cornett, Carol Harrison, Tarrice Brazier, Valdor Hall, Mr. John Slovensky, Bobby Lloyd.



## BETA CLUB

Sitting, left to right: Chloe Doby, Reporter; Samme Cornett, Treasurer; Joel Turner, Vice President; Jackie Hazelwood, President; Thelma Graham, Secretary; Joan Owen, Representative. Second row: Mrs. Frances Coleman, Sponsor; Jerry Spruiell, Gloria Beavers, Jack Willis, Rhonda Williams, Katherine Morton, Martha Roper, Don Hyde, Nelda Goodwin, Jeanette White, Patsy Morris, Martha Bishop, Nannette Sims, Faith Wilson, Jean Wilcox, Joe Ed Voss, Carol Harrison, Sally Sykes, Judy Robertson, Tarrice Brazier, Bobbie Johnson.













**GLEE CLUB**



**ART**

The frieze made by the advanced art class for the cafeteria at Christmas.





## LIBRARY CLUB

Katherine Morton, Ann Parmer, Charlotte Abercrombie, Elaine Savage, Doris Ann Truitt, Rosemary Edmondson, Mrs. Miriam Childs, Librarian.



## FUTURE TEACHERS OF AMERICA

Seated from left to right: Martha Bishop, Juanita Griffitt, Janice Baswell, Slona Stewart, Lydone Simpkins. Standing: Miss Beatrice Alexander, Sponsor; Murl Dorrough, Jacky Stewart, Jeanette White, Dorothy Keebler, Jalta Black, Wayman Carlisle.





**ATHLETICS**





## FOOTBALL SCHEDULE

Pell City	18	Wedowee	7
Pell City	13	Glencoe	21
Pell City	42	Lincoln	6
Pell City	26	Munford	7
Pell City	19	Tarrant	13
Pell City	13	Jacksonville	13
Pell City	44	Heflin	13
Pell City	20	Hokes Bluff	13
Pell City	47	Oneonta	13
Pell City	20	Leeds	13

Coach WILL GLOVER  
 Captain WAYNE SPRADLEY  
 Assistant Coach TOMMY ROGERS  
 Co-Captain JOHNNY COSPER







BOOT RICH



CHARLES ROBINSON



CURTIS GRAY



GERALD HARDWICK



HOMER BOWMAN

**Pell City wraps it up**—Pell City Halfback Curtis Grey moved a kickoff back to his own 36 before being brought down by an unidentified Leeds defender in the fourth quarter of Friday night's tilt at Leeds. Left Tackle Jimmy Alverson (75) moved in too late to do any blocking for his teammate. Several plays later Leeds recovered a fumble, but an interception killed its last chance to overcome the 20-13 tally. (Photo by Charles McGowen.)

Picture of  
Action



VALDOR HALL



WAYNE ADAMS





JERRY SPRUIELL



ROBERT WAYNE SKELTON



JOHN EDMONDSON



WAYNE SPRADLEY

## Rich fires Pell by Leeds, 20-13

BY CHARLES MCGOWEN

LEEDS, Ala., Nov. 19.—The Pell City Panthers got off to a flashing start here last night with two first-quarter touchdowns and drove on to whip Leeds High School Greenies, 20-13, in a homecoming battle.

The deciding factor for the favored Panthers was a speedy halfback, Charles Rich, who rambled for two of their scores. Rich took a handoff from Quarterback Robert Skelton on the opening kick and went 80 yards to score. Two plays after Pell City had gained possession again he was off on another touchdown jaunt, this time for 78 yards.

The Panthers scored again in the third period, and Leeds racked up its two in the second and fourth quarters.

Leeds made several strong threats to knot the score. After a Greenie score in the fourth quarter had set the score 20-13, a Leeds defender separated a Pell City runner from the ball and recovered on the Panther 46. With only 10 seconds remaining, Quarterback Johnny Smith hurled a long one, but it was intercepted by Left End Jerry Spruiell.

THE PANTHERS stopped the Greenies with goal line stands twice in the second quarter and again in the third. The Greenies' first second quarter venture deep into Pell City territory was stopped on the four when the losets failed to gain on a running play. The half ended as Leeds passed to the Panther

two in its other first half threat. A third quarter pass was dropped to halt another threat.

Pell City's third touchdown was made off a pass from Skelton to Spruiell from the Leeds 33. The advance started on the Panthers' own seven. Rich moved to the 18, Fullback Michael Harvey shoved on to the 21, Skelton to the 22 and Rich to the 29 for another first down. Harvey Rich and Halfback Curtiss Grey carried on to the Greenie 33 where Skelton tossed over.

Guard Jack Franklin scooped up a fumble on Pell City's 13 and took it over for Leeds' first score. Earlier the Greenies had pushed to the Panther four and lost on downs. Pell City fumbled and Leeds recovered on the following play. Leeds tried to pass it over and Rich intercepted for the Panthers and returned to the Pell City 11. It was four plays later that Franklin grabbed the scoring fumble.

Time was running short when Leeds finally got hot again. Halfback Bobby Bethune started the move with an interception on his own 30 and Smith climaxed it with a 10-yard run. After Bethune had returned his pass interception to the Leeds 48 Smith started hitting with his passes, and with the aid of Bethunes running moved it to the Panther three. Fullback Eddie Phillips carried over, but Leeds was penalized back to the 10. Smith failed on one pass attempt and then rounded left end for the score.



BOB VAUGHN



DON HYDE



HERSHEL COMPTON



TEDDY STEPHENS



PUNK COSPIER



JIMMY ALVERSON



ZANE SMITH



RONALD SUMNER

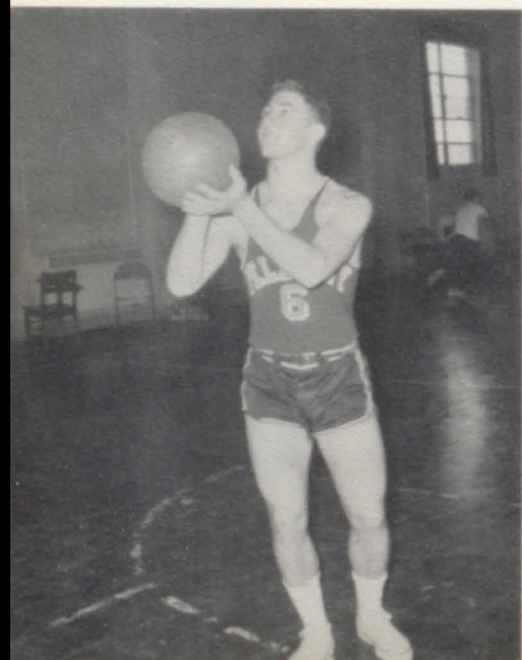




## COACH GLOVER'S "A" TEAM

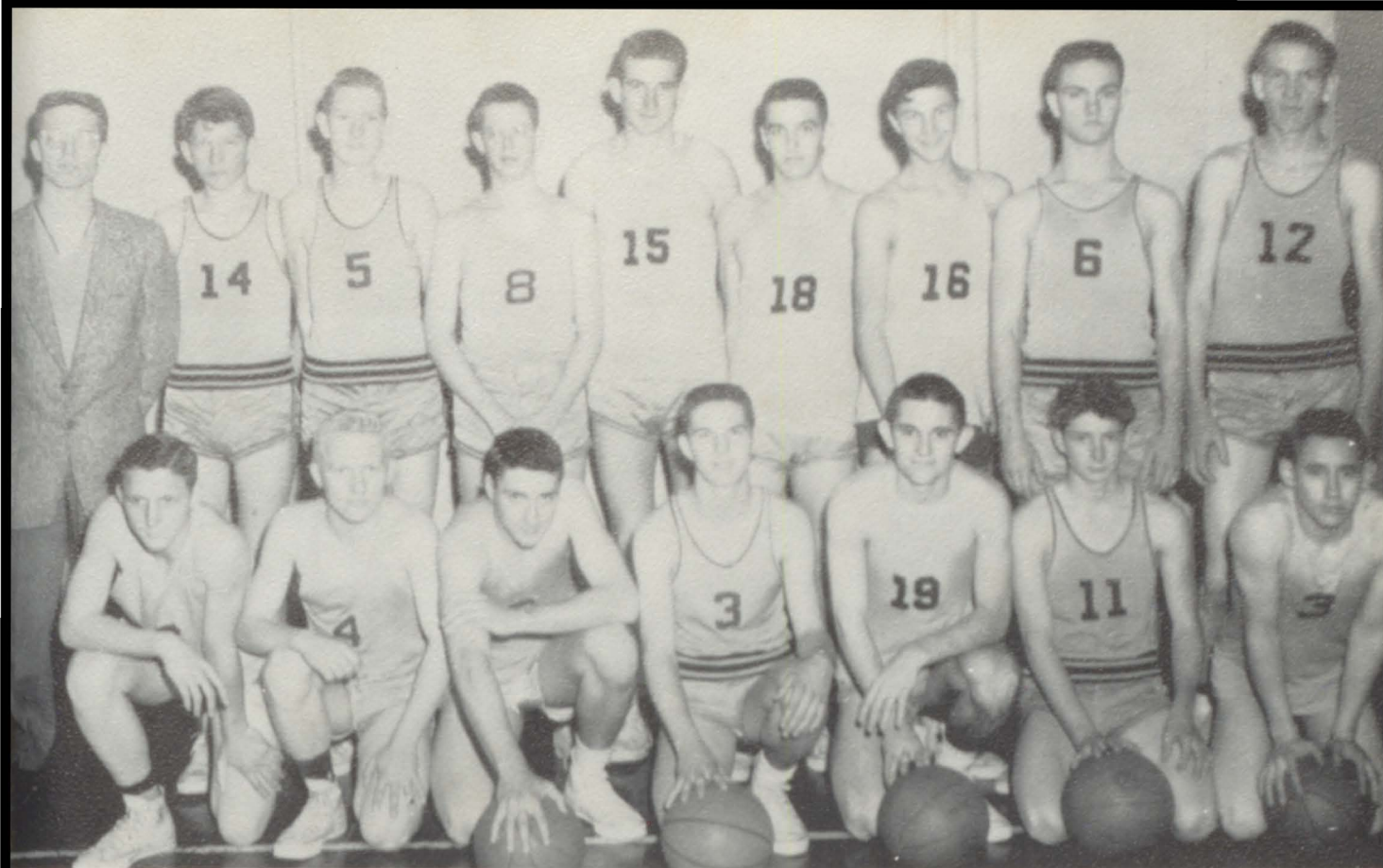
First row, left to right: Jimmy Youngblood, Pete Funderburg, John Edmondson, Robert Wayne Skelton.  
 Second row: Will Glover, Coach; Jerry Spruiell, Bob Vaughn, Jimmy Alverson, Charles Robinson, Buster Punderburg.

ROBERT WAYNE SKELTON, Captain



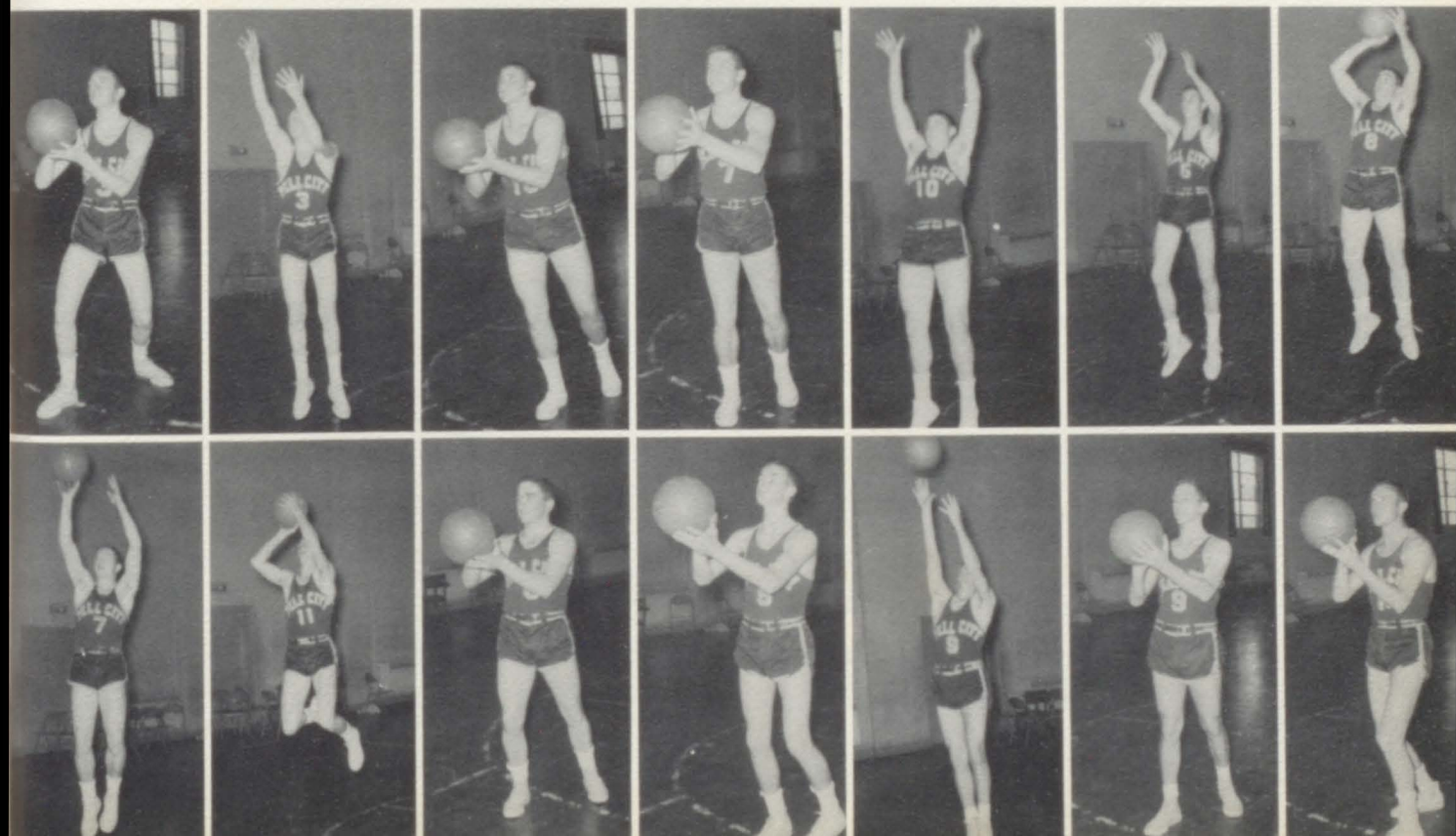
The above team was County Tournament  
 Basketball winner this season.



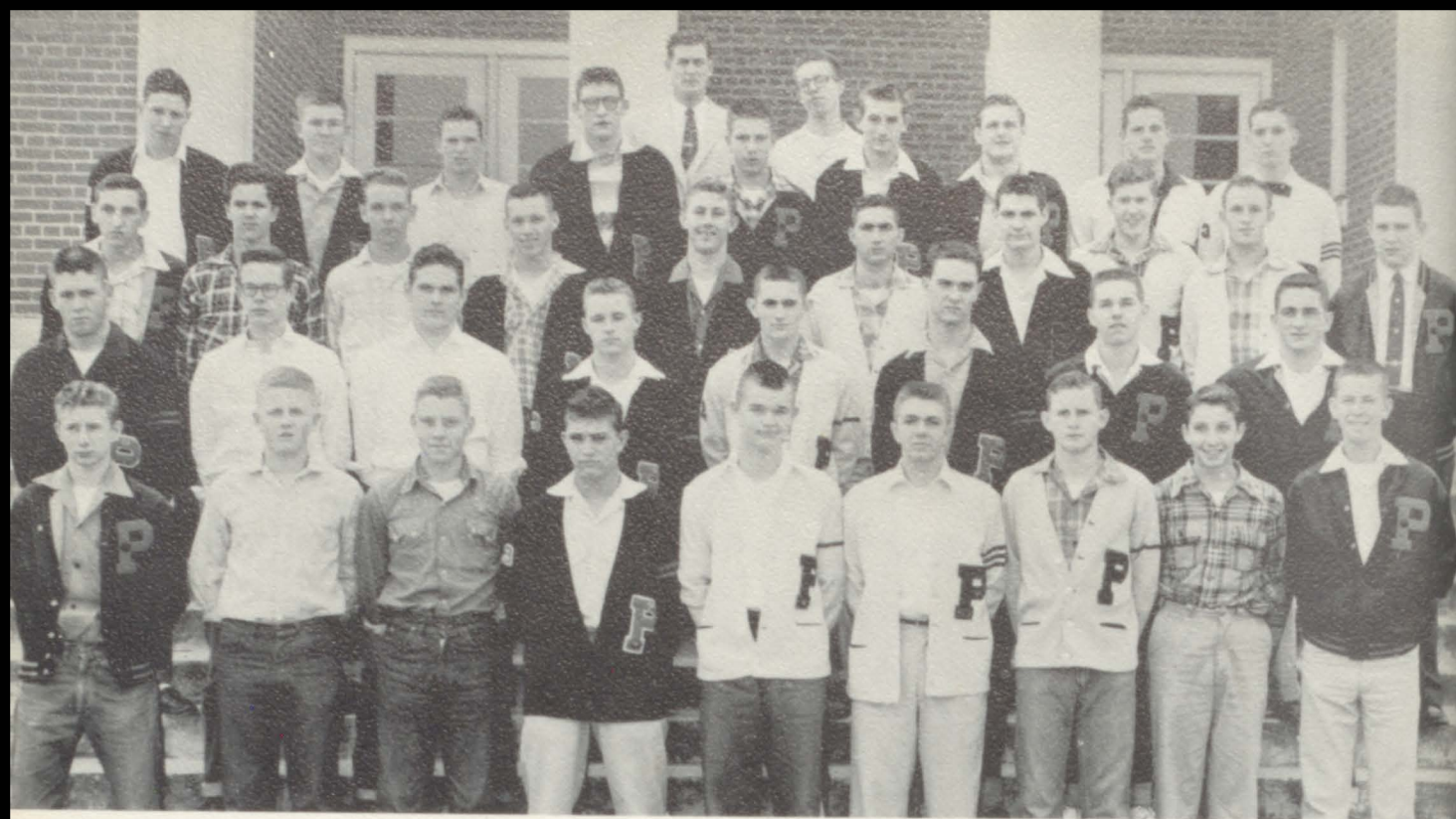


## COACH ROGERS' "B" TEAM

Front row, left to right: Paul Davis, Bobby Burnham, Bobby Banks, Ludford Harmon, Mike Harvey, Harold Willingham, Dicky Ely. Second row: Tommy Rogers, Coach; Richard Williams, Robert Layton, Hank Gary, Gerald Hardwick, Phillip Harmon, Howard Richardson, Wayne Adams, Don Willis.







**LETTER CLUB**



**CHEERLEADERS**

From left to right: Betty Frazer, Jean Wilcox, Ann Thomas, Jackie Hazelwood, Janice Baswell, Dorothy Keebler, Barbara Frazer.





## **ACTIVITIES**



## THEME OF BANQUET: "MOONLIGHT AND ROSES"











**HOMECOMING QUEEN**  
**Doris Ann Truitt**









Jacqueline Hazelwood  
MISS PELL HIGH 1955-'56









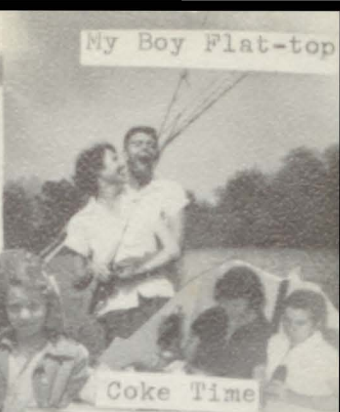
Three Musketeers



Hey! Goodlooking!



My Boy Flat-top



Coke Time



Dungerie dolls



Hungry???



Real Gone!!!



Dit up doot!

What's New!



Going steady



May I Have Some?



Midnight Snack



WHEN?



Neath The Old Apple Tree



We Took The Town



Guess Who?



Just Posing



Having Fun!!



That old gang of mine



Satisfied



tutti-Fruitti





Extra-Curricular Activity



Sittin' Pretty



Sooo Tired!



I Use Gleeem!!!



Summer Time



Don't Rock  
The Boat



He's my man!!!



Studying Hard???



The Left Out Feeling



What's the  
joke???



16 lbs.



Memories are made of this



Check That Smile



Careful Now!



It's almost tomorrow



Moments to remember



Waiting



Seventeen



Catch or Bait??



Good and lonesome





Adorable



Forward Look



Tug of War



Mary Lou



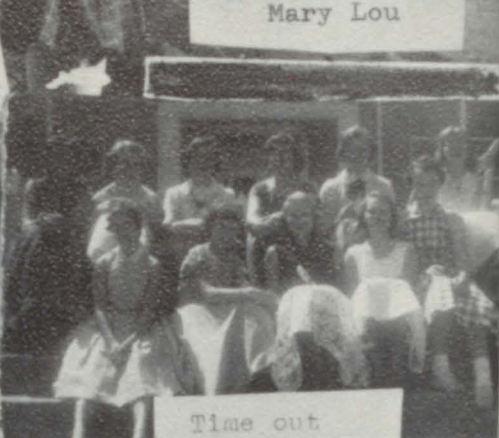
Devil or Angel?



Only you



Crazy Man Crazy



Time out



Sexy Ways



Hey Joe!!



New Addition



Speed-0!!



Two O'Clock in Morning



Sleepy time gal







**ADVERTISERS**



Compliments of

*Try-me*

BOTTLING COMPANY

Birmingham, Alabama

DICK'S BAR-B-Q

Pell City

THANK YOU DONATORS

SENIORS

IDEAL  
LAUNDRY

Complete Laundry Service  
Plus

Speedy-Wel-Wash-It

W. H. MILLER, Owner

Oak Ridge, Alabama

Compliments of

PELL CITY  
DRUG COMPANY

Pell City, Alabama



*Your*



DEPENDABLE  
DRUGGIST

Phone 126

For Fine Quality in Furniture See

MOSS  
FURNITURE COMPANY

Pell City

Phone 30





*St. Clair*  
MOTOR COMPANY

Phone 141  
Pell City, Alabama

SALES



SERVICE

PELL CITY  
*Cleaners*

"Our Cleaning Decidedly Better"

Phone 113J

PELL CITY'S  
FIVE AND TEN

Self-Service Shopping

*Union*  
STATE BANK

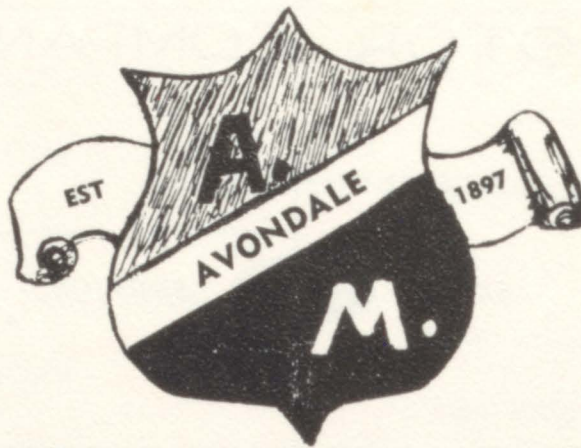
Member of Federal Deposit Insurance Corporation

"52 Years of Service"

Pell City, Alabama



# AVONDALE



# MILLS

Founded By

Governor B. B. Comer

In 1897

General Office: Sylacauga, Alabama



"Congratulations"

and

"Best Wishes"

from

*Mays & Jones*

The People's Store

Compliments of

**JAMES E. HARRISON**

Portables

ROYAL TYPEWRITERS  
Standards

Electrics

1023 Atlanta Ave.  
Anniston, Ala.  
Tel. A.D. - 5-5525  
Opposite Courthouse

**FELDSER'S  
VARIETY STORE**

Pell City, Alabama

Compliments of  
**TED R.  
HAMMETT**  
INSURANCE AGENCY

Insurance of All Kinds

Pell City, Ala.



Compliments of  
**ST. CLAIR**  
FARMERS EXCH., INC.

Pell City, Ala.

**COMMUNITY**  
CLEANERS

"The Very Finest  
in Dry Cleaning"

Phone 72

Real Pit Bar-Be-Cue

**DYCUS**

DRIVE-IN

"See You at Sam's"

**Hills**

FOOD STORES

For

**B**

BEST SERVICE!

BETTER QUALITY!

BIGGER SAVINGS!

"It's the Total You  
Save That Counts!"

Compliments of

*St. Clair Co.*

TELEPHONE CO., INC.



**KLINNER**

SERVICE STATION

Phone 9292



Compliments of

*Snider's*

FLOWER SHOP

Pell City

Phone 11-M

Compliments of

PELL CITY  
AUTO PARTS

Pell City

Phone 142

Compliments of

*Robersons*

Pell City

Phone 123

Compliments of

J.L. GARRET  
OIL COMPANY

Gulf

Pell City

VAUGHANS  
RADIO SERVICE CO.

Tubes, Parts, and Supplies

Pell City

Phone 181

Pell City

*Dairy Queen*  
for

Malts, Sundaes, Cones

Compliments of

DR.

*Roy Coshatt*

Pell City, Alabama



<p>Compliments of</p> <p><b>ALLEN'S</b> BARBER SHOP</p> <p>Pell City</p>	<p>Compliments of</p> <p><b>CHASTAIN-ROBERTS</b> CO.</p> <p>Anniston, Alabama</p>
<p>Compliments of</p> <p><b>FOOD CENTER</b></p> <p>Pell City                      Phone 209</p>	<p>Compliments of</p> <p><i>A Friend</i></p>
<p>Compliments of</p> <p><b>RAGLAND</b> LUMBER CO.</p> <p>Ragland, Alabama</p>	<p><b>OSBORN BROTHERS</b></p> <p>231 North 3rd St.</p> <p>Attalla, Ala.</p>
<p>Compliments of</p> <p><b>WILLIAMS</b> BARBER SHOP</p> <p>Pell City</p>	<p>ALABAMA POWER CO.</p> <p>Pell City                      Phone 49</p>
	<p>BOWMAN TRACTOR CO.</p> <p>Eden, Alabama              Phone 309W2</p>



Compliments

*Jinn*

GROCERY

Pell City

Phone 167

SUBLETT

MUSIC SHOP

Pianos on Easy Terms

New Records, All Type

Pell City

Phone 503

Congratulations and

Best Wishes to

Seniors of 1956

*Milton J. Norrell*

M. D.

Compliments of

A

FRIEND

Compliments

BELL  
HARDWARE CO.

Pell City

Phone 195

Compliments

LOVE  
PONTIAC

Pell City

Phone 179

TURNER'S  
TV

Sales and Service

Norge Appliance - Dumont TV

Pell City

Phone 310

Compliments

SCOTT  
BROTHERS HARDWARE

Pell City, Ala.

Phone 100





"Finest in Motion Picture Entertainment"

*Lyric*  
THEATER  
&  
ST. CLAIR  
DRIVE - IN

Best Shows on Earth Or Anywhere Else

Pell City, Alabama

PELL CITY  
GROCERY AND MARKET

For Quality

JAMES INGRAM, Owner

ROY HOLLADAY  
MOTORS

Dodge  
and  
Plymouth



*Citizen's*  
DRUG

As Near as Your Phone

Pell City, Alabama  
Phone 289





Compliments of

EDWARDS  
TOBACCO CO.

P. O. Box 786

Anniston, Alabama

Compliments of

JIMMIE'S  
SHOE SERVICE

Pell City

Quality  
Recapping

PELL CITY  
TIRE REBUILDERS

Pell City

Phone 89

Compliments of

*Frank Embry*

WILKINS  
LUMBER CO.

Dealer in Yellow Pine

Eden, Alabama

Phone 189J3

Compliments of

IRA  
DAVIS

Compliments of

DR.

*E. F. Williamson*

Pell City

Phone 170

Compliments of

WARREN  
OIL COMPANY

Pell City



Compliments of  
**EMBRY**  
OIL  
&  
SUPPLY CO.

Pell City, Ala.

Congratulations  
to Seniors

*Dr. A. F. Riser*

**PELL CITY**  
FLOWER & GIFT SHOP

Flowers for All Occasions

Phone 50

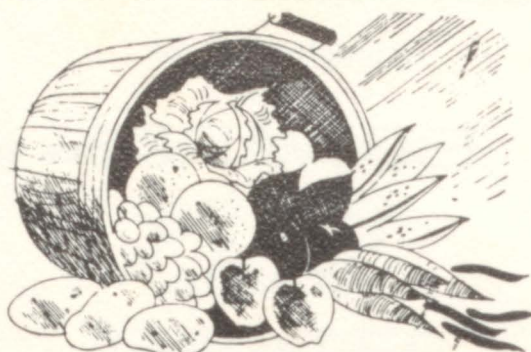
Pell City, Alabama

*Williams*  
**BEAUTY SHOP**

For the New Look

"See Sook"

Phone 70-J  
Operator, DOT GANT



You Can Depend  
on A & P for Fine  
Fruits and Vegetables,  
All Temptingly Priced!



America's Foremost Food Retailer Since 1859

**Super Markets**

The Great Atlantic & Pacific Tea Company

Compliments of  
**"NIXONS**  
SERVICE STATION"

(DILL'S)

Pell City, Ala.

Phone 9285

Read:  
**THE**  
**ST. CLAIR**  
**NEWS-AEGIS**

Everything That's Worth  
Reading  
in

St. Clair County

Phone 22



Congratulations to Seniors

Our Best Wishes to You in All That You May Do

Anniston - Talladega



JOHN L. BARBER

TOM F. BARBER

**BARBER**  
SALES COMPANY

Distributor

"Tom's" Toasted Peanuts - Fine Candies and Peanut Butter  
Sandwiches

Talladega, Alabama

Res. Phone 2534

Office Phone 3115

**JEFFERSON**  
HOME FURNITURE CO.

"St. Clair County's Outstanding Furniture Store"

Pell City

Ragland



Good Food

For



**Sexton**  
*Quality Foods*

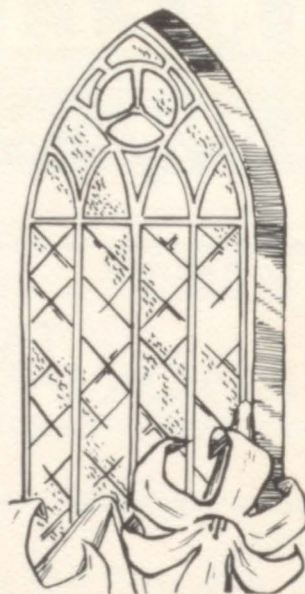
Pleased Guests  
Sexton Quality Foods

Compliments of

*Cohen's*  
STORE

Pell City, Alabama

KILGROE  
FUNERAL HOME



Pell City, Alabama



Pell City  
Alabama

Phone 143

Original Self-Service

Compliments of

**J.A. INZER & SON**

Grocery and Fresh Meats

Eden, Ala.

Phone 309-J

Compliments of

**SCOTT**  
BROTHERS HARDWARE

Pell City, Ala.



Fine Class Rings

Announcements

Established 1897

*Gosten's*

Owatonna, Minnesota

Representative:

Birmingham, Alabama

Yearbooks


Awards

THANKS TO YOU OUR DONATORS.

YOU HAVE MADE THIS ANNUAL POSSIBLE

THE STAFF





Now that we have reached the end of this, our attempt at summarizing this one year in our Long Long Trail of education, we wish to thank our very loyal and helpful advisor, Mrs. Corinne Jackson, who has given tirelessly of her time and efforts to help make this annual a success. We also offer our gratitude to Mr. Van Blakenship, our photographer, who has helped us immensely and has been very generous in the giving of his time and knowledge to further the success of this annual. We want to express thanks to all the people who have contributed to the publication of this annual and we thank you, the student body of Pell City High School, for the support and cooperation you have so willingly given us.

THE ANNUAL STAFF



