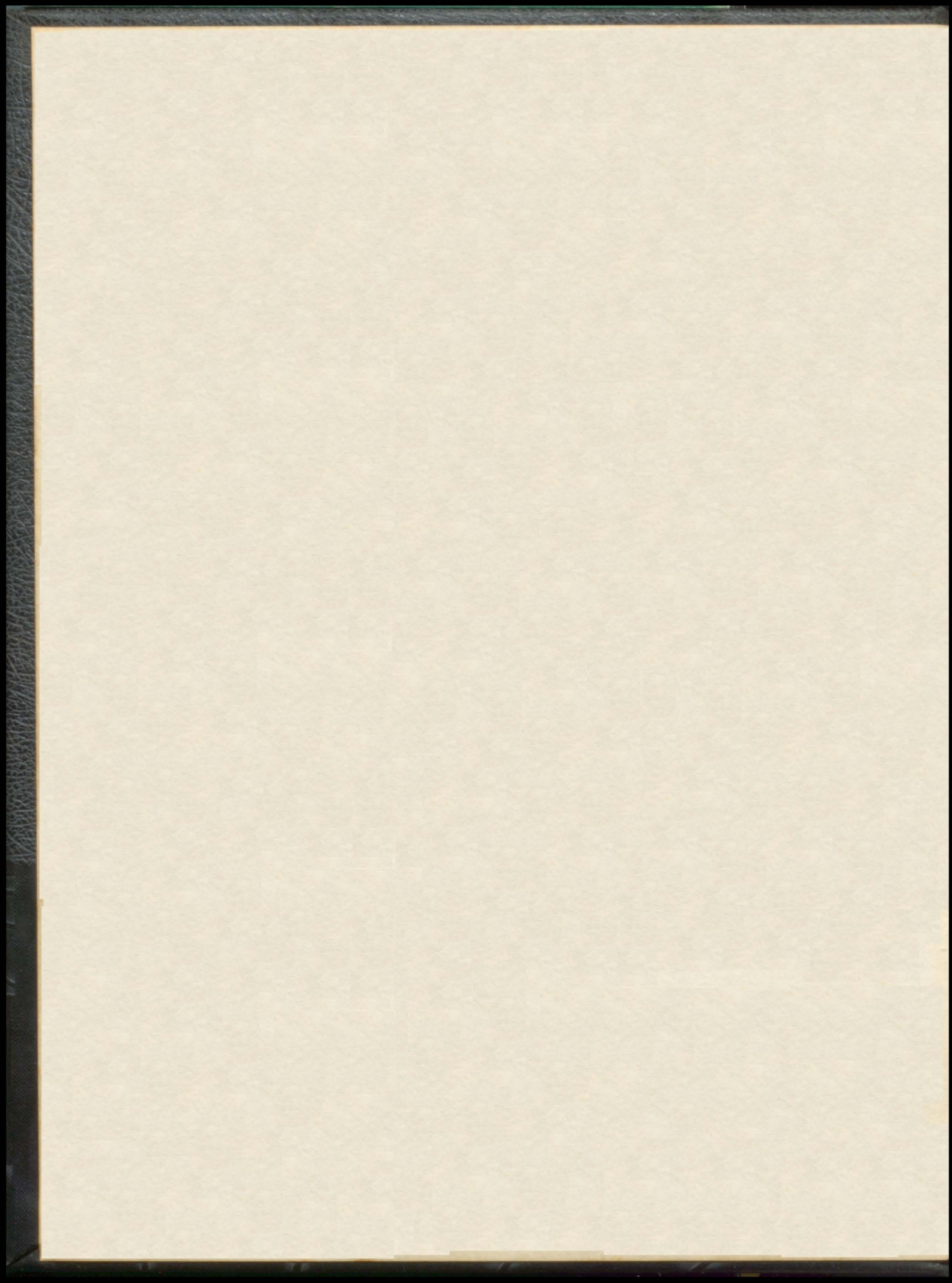
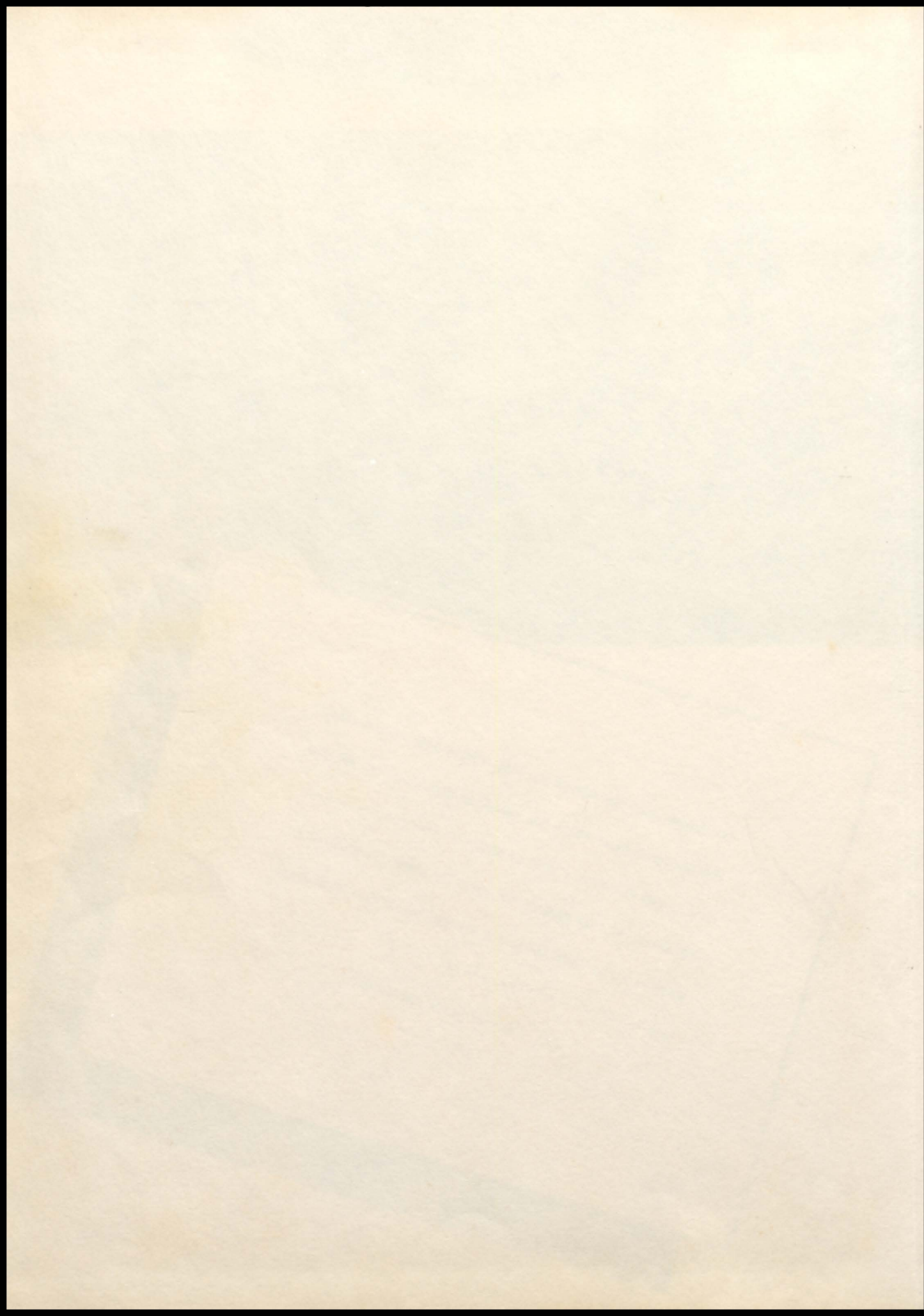
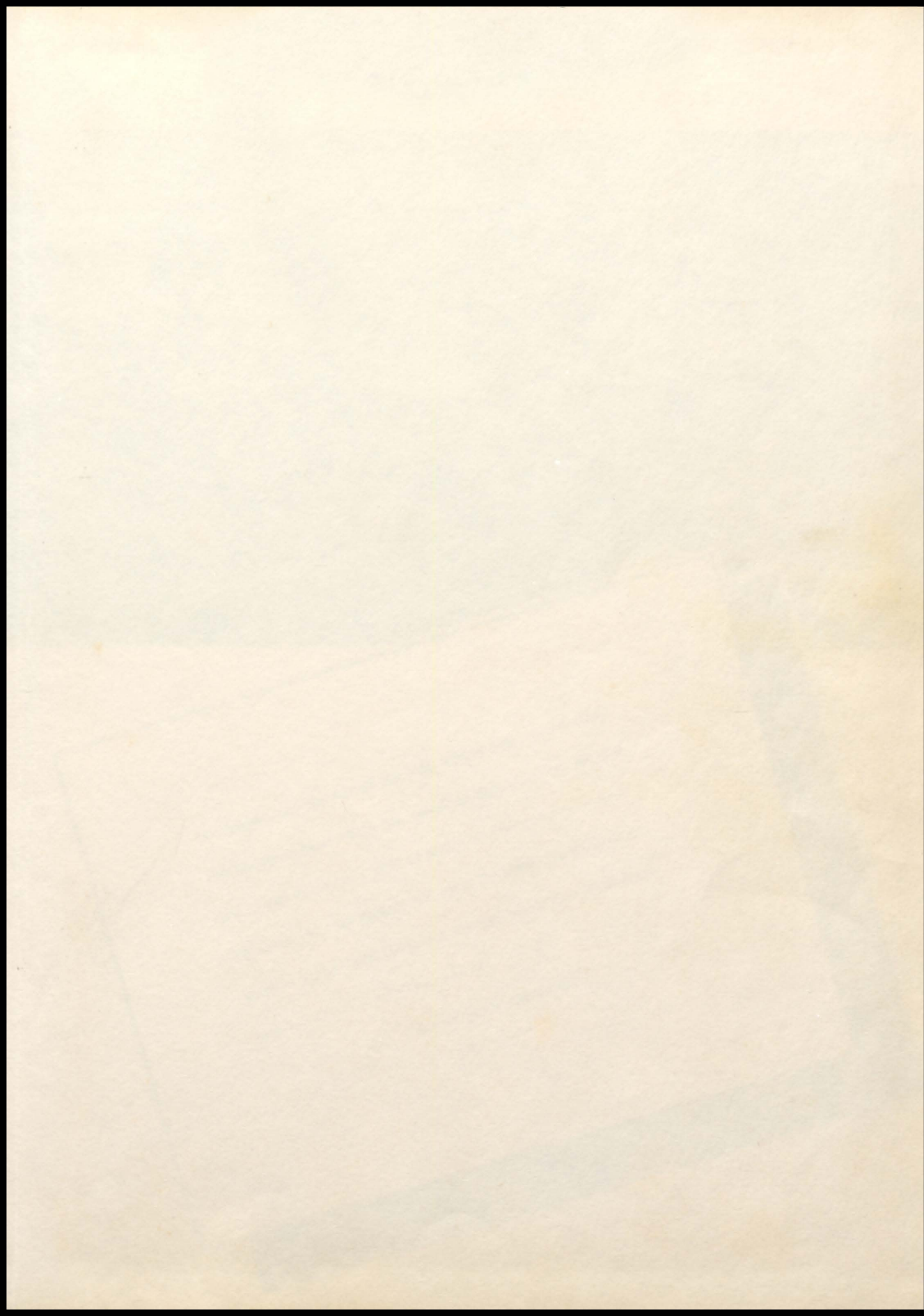




PELMEL

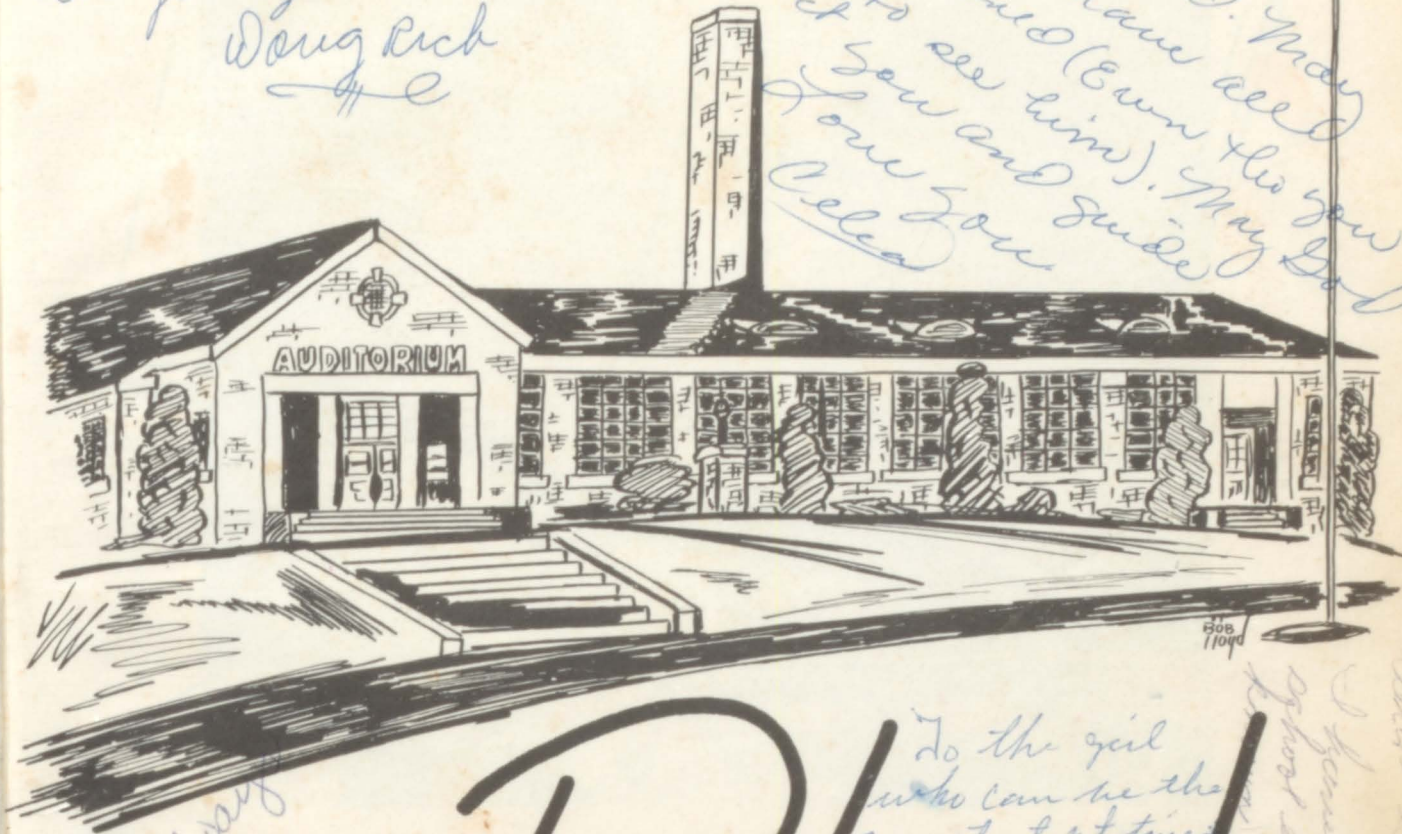






To a real cute
girl. Best of
everything.
Doug Rich

To Carolyn, the
success in world. May
you and Jim have all
success in world (even tho you
never get to see him). May God
always protect you and guide
you.
Love you
Celea



Best of luck always
Love
Bernie

THE
Pell
PRESENTED BY THE
SENIOR CLASS
OF

To the girl
who can be the
sweetest at times
the meanest at times
May you have a
lot of fun in
college
I know you
will. May
you have the best
of luck
Jack

PELL CITY HIGH SCHOOL

1957

It's a really nice
and cute girl I like
always remember
you and your
sweet smile.
Love
Mike

Best of luck
always
Gordon
Jackson

TABLE OF
TITLE PAGE
FOREWORD and CONTENTS
DEDICATION
FACULTY
CLASSES

CONTENTS
FAVORITES
ACTIVITIES
ORGANIZATIONS
ATHLETICS
ADVERTISEMENTS

Contents

and Foreword

FOREWORD

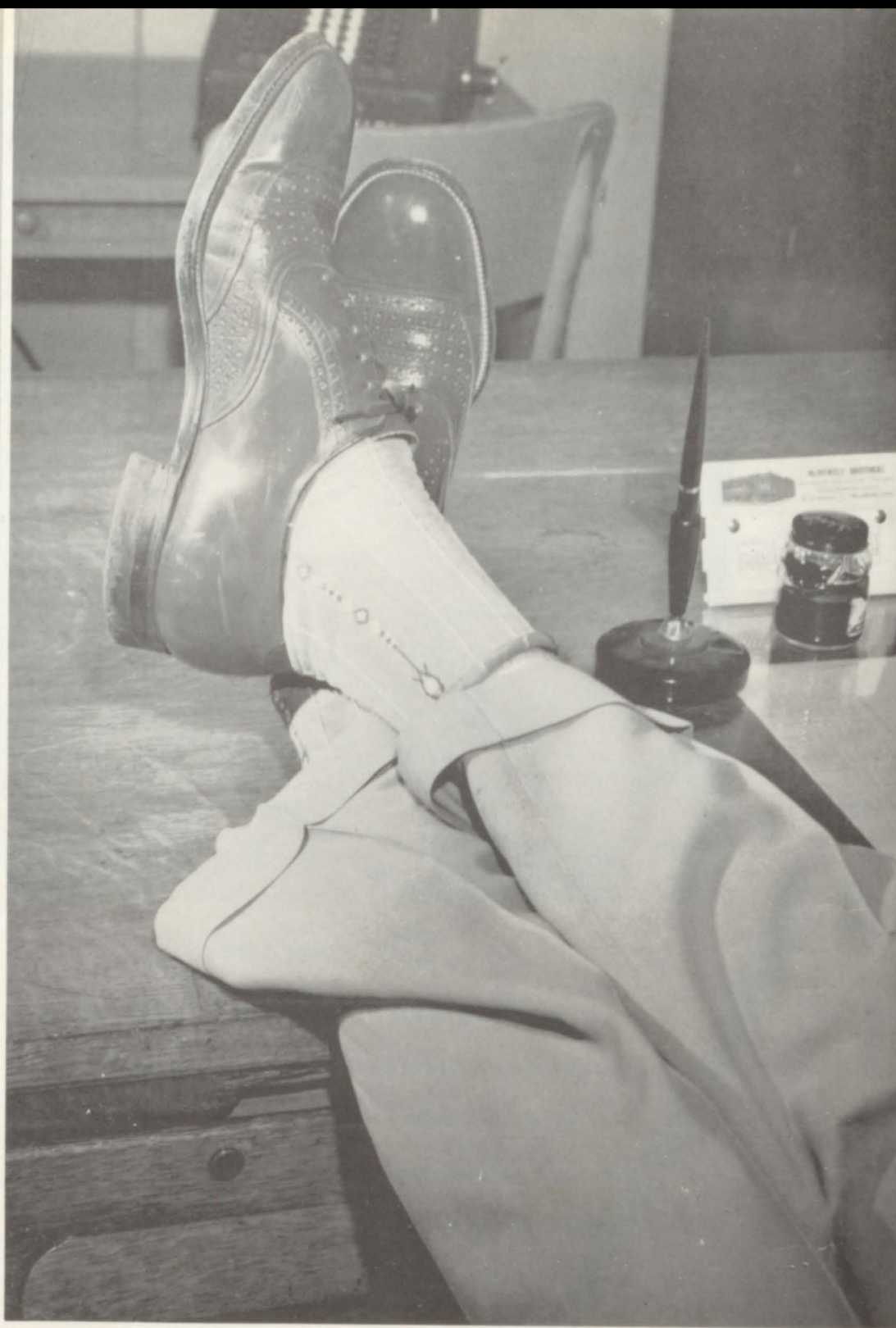
Molds for your future have been set during your years at P.C.H.S. If this book in some way, will help you to recall the many events and challenges in this 1956-57 year and the way in which those events have molded your future, the purpose of this year-book will have been fulfilled.

The Staff



Dedication

We respectfully dedicate this 1957 issue of Pelmel to Dr. Autry L. Bailey in admiration of the fine leadership he has brought Pell City High School. He merits us recognition for this sympathetic understanding of the Student viewpoint, his stress of self-reliance, and his unflagging encouragement of scholarship. In the short time here, Dr. Bailey has won our sincere respect.



Faculty



DR. A. L. BAILEY
Principal



MISS BEATRICE ALEXANDER
Democracy, History



MRS. ELIZABETH STARNES
History, English



MR. BOBBY HAWKINS
Spanish, Science, English



MR. C. C. LEE
Spanish, English



MRS. SARAH MEWBOURNE
English



MR. JOHN C. SLOVENSKY
Chemistry, Biology,
Science



MISS ANNE CAROL WAITE
Typing, Shorthand



MISS NIOMA LEE
Librarian



MRS. DOROTHY MAYS
History, Art, Ceramics.



MRS. CORRINE JACKSON
Algebra, Geometry



MR. LESTER BRYANT
Math, Science



COACH WILL GLOVER
Science, Physical Ed.



ASSISTANT COACH TOM ROGERS
Civics, Science, History



MRS. FRANCES COLEMAN
Physical Ed.



MRS. GRACE LOCKE
Home Economics



MR. J. W. LOCKE
Agriculture



MR. ROBERT WATFORD
Band, Glee Club



★
Seniors



Senior Class Officers

ANN THOMAS, Representative; VERBON HALL, Treasurer; JO ANN DAVIS, Secretary;
RAY HANNAH, Vice President; TED HIGGINBOTHAM, President.

CAROLYN CHRISTINE ADAMS

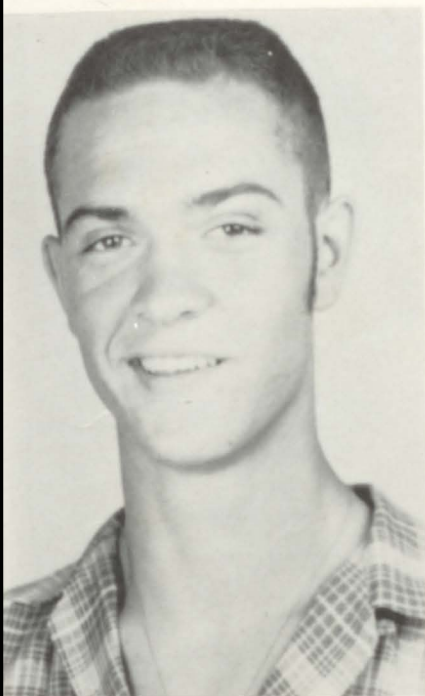
(Carolyn)

Beta Club, Citizenship Club Reporter, Secretary of Usher Club, Secretary of FHA, Spotlight Staff, Spanish Club, 4-H Club, Banquet Server.

SYLVIA ALICE ADAMS

(Sib)

Miss Homecoming 56-57, Glee Club, Annual Aid, Spotlight Staff, Recreation Club, 4-H Club, Dramatics Club, Dancing Club, Banquet Server, Beta Club.



WAYNE MORRIS ADAMS

(Teague)

Football 4 years, Letter Club, Beta Club, Annual Staff, Photography Club, Recreation Club, Art Club, 4-H Club, Banquet Server.

MARY NELL ALLEN

(Curlie)

Beta Club Reporter, Assistant Business Manager of Spotlight, Annual Staff Circulation Manager, Glee Club, Dramatics Club, Recreation Club, Library Club, 4-H Club, Assistant Office Secretary, Banquet Server.

FRANCES ELIZABETH ARNOLD

(Frances)

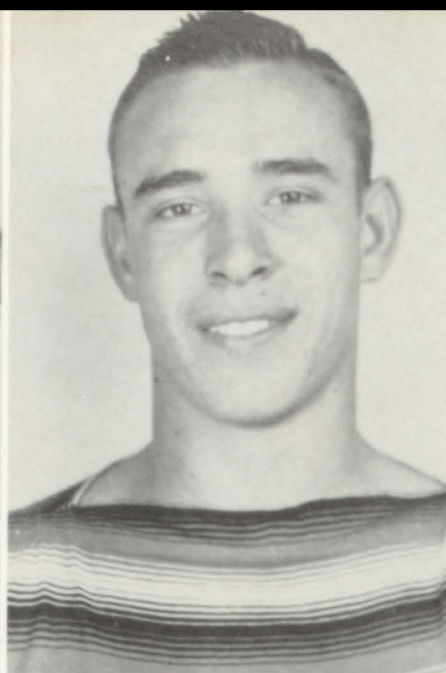
4-H Club, Nursing Club, Recreation Club, Glee Club, FHA Secretary, Spotlight Staff.

BOBBY RANCE BANKS

(Bobby)

Football 3 years, Letter Club, Recreation Club, 4-H Club, FFA.





CHARLOTTE ANN BICE

(Charlotte)

Transfer from Thomasville, FHA Devotional Chairman, Dramatics Club.

EMERIS AARON BOWMAN

(Emeris)

4-H Club, Recreation Club, Photography Club, Letter Club, Football 1 year, Spotlight Staff, FFA 3 years, FFA President, Representative to National FFA Convention, Student Council.

HOMER LEE BOWMAN

(Bo-Bo)

Sports Club, Letter Club, Football 4 years, FFA, 4-H.

LINDA SUE BOWMAN

(Linda)

Student Council Secretary, Beta Club, Annual Aide, Spotlight Staff, Glee Club, Leadership Club, Nursing Club, 4-H Club Secretary, Banquet Server, Good Citizenship Girl.



CHARLES WAYNE BROWN

(Charlie)

Junior Class Vice President, Recreation Club, 4-H Club, Audio Visual Club, Spanish Club, Spotlight Staff, Banquet Server.

EUGENE BYNUM

(Eugene)

Rep. to National FFA Convention, Recreation Club, Usher Club, Football 1 year, FFA 3 years, Letter Club, Glee Club, 4-H Club.

PAULIE EUGENE CASTLEBERRY

(Eugene)

4-H Club, Glee Club, Science Club.

PEARLENE CASTLEBERRY

(Pearlene)

4-H Club, Recreation Club, Usher Club,
Good Citizenship Club, FHA, Spanish
Club, Dramatics Club.



JOHN HERBERT CONNER

(John)

Photography Club, 4-H Club, Audio
Visual Club, Annual Aide, Banquet
Server.

JAMES LOUIS COTTON

(Jimmy)

Photography Club, Bible Club, FFA,
4-H Club, Bus Drivers Club, Science
Club.

CHARLES MILTON COX

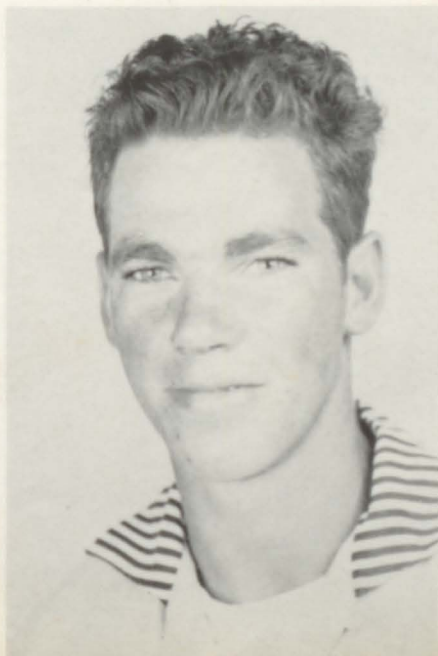
(Milton)

4-H Club, FFA, Sports Club, Photography
Club, Science Club.

SAMUEL McCOY CRUMP

(Sam)

Bible Club, Bus Drivers Club, 4-H Club,
Photography Club, Science Club, FFA.





MARY JO ANNA DAVIS

(Jo)

Annual Typist, Spotlight Staff, Student Council 2 years, Glee Club 2 years, Recreation Club, 4-H Club, Treasurer Sophomore Class, Secretary Senior Class, Beta Club, Dancing Club, Junior Class Representative, Dramatics Club, Assistant office Secretary, Banquet Server, Treasurer of Dramatics Club.

SAMUEL RAY DICKEY

(Sammy)

Recreation club, 4-H Club, Photography Club, Football 2 years, Letter club, FFA.

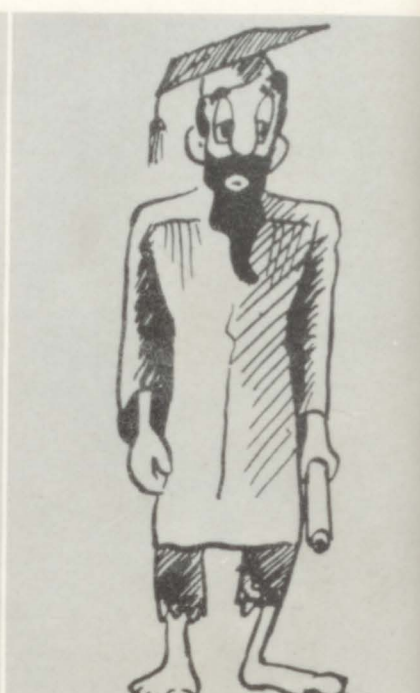
JACKIE KAREN DONAHOO

(Jackie)

4-H Club, Recreation Club, Spanish Club Secretary, Dramatics Club, Dancing Club.

RICHARD DONAHOO

FFA, Photography Club, 4-H Club, Recreation Club, Football 1 year, Letter Club.



JUDITH KAYE DOROUGH

(Judy)

Cheerleader, Beta Club, Spotlight Staff 4 years, Annual Aide, Dramatics Club, Banquet Server, Recreation Club, Dancing Club, Letter Club, Glee Club 3 years, 4-H Club. Representative to Student Council from Senior Class.

ELVIN LUTHER DOWNEY

(Elvin)

Withdrawn.

ARTHUR MERRIL DYE

(Merril)

4-H Club, Recreation Club, Photography Club, Art Club, FFA.

HARMON GROVER FRAIM, JR.

(Bookie)

4-H Club, Recreation Club, Dancing Club, Bus Drivers Club, Spanish Club.



BARBARA SUE FRAZER

(Barbara)

Head Cheerleader, Cheerleader 3 years, Beta Club Secretary, Student Council, Annual Staff Ad. Committee, FTA Treasurer, Glee Club, Recreation Club, Sophomore Class Representative, Dramatics Club, Dancing Club, 4-H Club, Banquet Server, Letter Club.

BETTY LUE FRAZER

(Betty)

Head Cheerleader, Cheerleader 3 years, Beta Club Correspondent Secretary, Student Council, Annual Staff, Photography Chairman, FTA Secretary, Glee Club, 4-H Club, Recreation Club, Sophomore Class Secretary, Dramatics Club, Dancing Club, Banquet Server, Letter Club.



BARBA ANN FRAZIER

(Barba)

FHA song leader and reporter, Spotlight Staff, Readers Club, Beta Club, 4-H Club.

SARAH JOYCE GIBBS

(Joyce)

Beta Club, FTA, Spotlight Staff, Co-Editor of Spotlight, Recreation Club, Glee Club, Dancing Club, Dramatics Club, 4-H Club Reporter.





JEANETTE GOODGAME

(Jeanette)

Recreation Club, FHA Historian and Treasurer, FTA, Reading Club, Glee Club.



CHESTER FRANKLIN GRAHAM

(Chester)

4-H Club, FFA.

CURTIS LEE GRAY

(Curt)

Football 3 years, Letter Club 2 Years, Spanish Club, Recreation Club, Dancing Club, Photography Club, 4-H Club, Banquet Server.

RICHARD GREEN

(Richard)

4-H Club, Dramatics Club.



GENE ROLAND GRIFFIN

(Gene)

Letter Club, Football 1 year, 4-H Club, FFA, Art Club, Science Club, Recreation Club, Banquet Server.

JUANITA ANN GRIFFITT

(Juanita)

4-H Club, Nursing Club, Recreation Club, FHA President, FTA Librarian, Glee Club.



DORAS FAY GUY

(Doras)

Beta Club, Assistant Parliamentarian of FHA, Secretary Good Citizenship Club, Vice President Usher Club, 4-H Club, McCall's Teen Fashion Board Member 1956-57, Banquet Server.



VALDOR MOODY HALL

(Valdor)

Student Council President, Junior Class President, Beta Club, Letter Club 2 years, Captain of Football Team, Basketball 1 year, 4-H Club, Dramatics Club, Recreation Club, Science Club, Dancing Club, Annual Aide, Spotlight Staff, Banquet Server.



LESLIE VERBON HALL

(Verbon)

Beta Club, Senior Class Treasurer, Junior Class Representative, Dramatics Club, 4-H Club, Glee Club, Recreation Club, Photography Club, Banquet Server.

MARTHA ANNETTE HAMILTON

(Nett)

Beta Club, FTA Pianist, Dramatics Club, Annual Aide, Recreation Club, Glee Club 2 years, 4-H Club, Dancing Club, Banquet Server.

ARTHUR RAY HANNAH

(Ray)

Dancing Club, Photography Club, 4-H Club, Bus Drivers Club, FFA Reporter.

SARA SPRADLIN HANNAH

(Sara)

Nursing Club, Recreation Club, 4-H Club, Treasurer of FHA, Good Citizenship Club Program Committee.





PHILLIP HARMON

(Phil)

Beta Club Vice President, Sophomore Class President, Bus Drivers' Club, Recreation Club, 4-H Club, Basketball, Annual Aide, Dancing Club, Spotlight Staff, Banquet Server.

ULLIS EUGENE HAZELWOOD

(Ullis)

FFA, 4-H Club, Dancing Club.

BONNIE MAE HESTERLEY

(Bonnie)

Beta Club, Annual Aide, Recreation Club, Nursing Club, Good Citizenship Club President, 4-H Club, Glee Club, Dramatics Club, Banquet Server.

TEDDY RAY HIGGINBOTHAM

(Teddy)

4-H Club, Science Club, Audio Visual Club, Junior Class Treasurer, Beta Club, Student Council, Senior Class President.



JERRY JOE HOWARD

(Jerry)

Glee Club, Bus Drivers' Club, Spanish Club, Recreation Club, Photography, Banquet Server.

MARY JIM INGRAM

(Mary Jim)

Beta Club Treasurer, Student Council, Annual Staff Advertising Chairman, FTA President, Glee Club, 4-H Club, Dancing Club, Recreation Club, Dramatics Club, Banquet Server.

VIRGINIA LENORA JOHNSON

(Lenora)

Beta Club, Editorial Editor of Spotlight,
FHA Secretary, County FHA Secretary,
4-H Club, Glee Club.



MILDRED JUNE JOHNSON

(June)

Transfer from Huntsville.



CAROLYN KINCAID

(Carolyn)

Beta Club, Co-Editor of Pelmel, Assistant Business Manager of Spotlight, Spotlight Staff, Dramatics Club 2 years, Glee Club 2 years, Glee Club Librarian, Recreation Club, Banquet Server, 4-H Club.

GLYNDA FAYE KINCAID

(Glynda)

4-H Club, Nursing Club, Dancing Club, FHA Assistant Historian, FHA Reporter.

HOMER CECIL LAYTON, JR.

(Homer)

4-H Club, Photography Club.



CHARLES EDWARD LEE

(Charles)

4-H Club, Photography Club, FFA.





ROBERT PERRY LLOYD

(Bobby)

Art Club President, Art Club 2 years, Student Council 2 years, Spotlight Art Editor 3 years, Audio Visual Club, State Scholastic Art Award Winner 2 years.

FRANCES JEANETTE MANNING

(Jeanette)

Captain of Band, FHA Historian, Dancing Club, Nursing Club, 4-H Club, Banquet Server.

SANDRA OPAL MASHBURN

(Sandra)

Beta Club, Glee Club 2 years, Dramatics Club, Recreation Club, Spotlight Staff, Band, 4-H Club, Banquet Server.

JIMMY LOU MASTERS

(Jimmy)

Beta Club, FHA, Spotlight Staff, Annual Aide, Glee Club 2 years, Recreation Club, Banquet Server.



VIRGIL McCORD

(Virgil)

Recreation Club, Photography Club, Art Club, FFA 2 years.

ROY FRANKLIN MEEKS

(Roy)

4-H Club, Bus Drivers Club, FFA.

BENNY RAY MULVEHILL

(Benny)

Letter Club, Football 1 year, Spanish Club, Vice President, Recreation Club, Dancing Club, Annual Aide, Spotlight Staff, Banquet Server, 4-H Club, FFA Treasurer, Art Club.



CLYDE GENE O'BARR

(Gene)

Art Club, Recreation Club, Dancing Club, Science Club, 4-H Club, Banquet Server.



GAIL ANNETTE PEMBERTON

(Annette)

Beta Club, Annual Staff Assistant Business Manager, Recreation Club, Nursing Club, 4-H Club, Dramatics Club.

EARL FRANKLIN PEOPLES

(Frank)

Representative to National FFA Convention, FFA 3 years, Bus Drivers Club, Spanish Club, Photography Club, 4-H Club, Dancing Club, Ushers Club.

PHILLIP BRENT POLK

(Phillip)

4-H Club, Art Club, Study Club, Photography Club, Banquet Server.



MARVIN CURTIS POPE

(Marvin)

4-H Club, Bus Drivers Club, FFA 3 years, Ushers Club, Bible Club, Photography Club, Sentinel of the FFA Chapter.

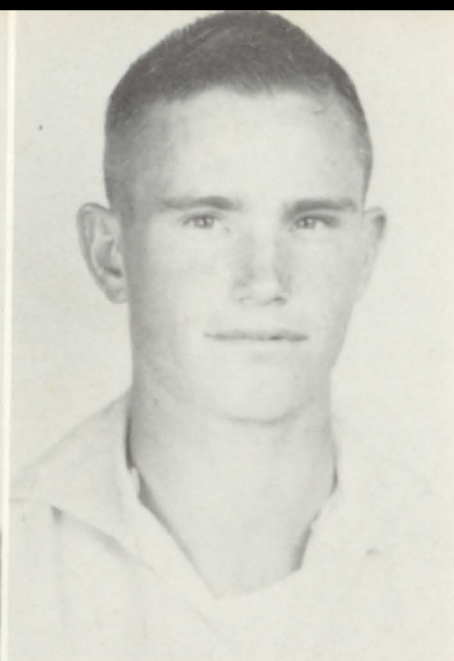




WILLIAM MUIR PURVIS, JR.

(Bill)

4-H Club, Banquet Server, Recreation Club, Dancing Club, Dramatics Club, Football 1 year, Letter Club.



CHARLES EDWARD RICH

("Boot")

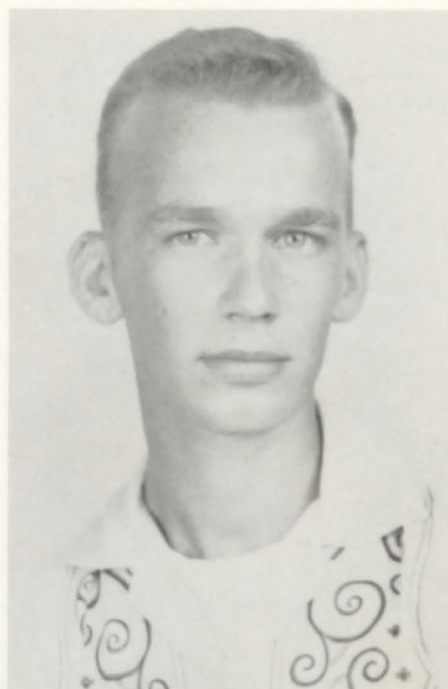
Co-Captain of Football Team, Football 3 years, Spanish Club President, Letter Club 4 years, Recreation Club, Spotlight Staff, Annual Aide, Sports Club, Photography Club, Art Club, Banquet Server, 4-H Club, Dramatics Club, Student Council, Manager Football Team.

Bill Purvis

DOUGLAS EUGENE RICH

(Douglas)

Photography Club, Football 1 year, Letter Club, Dancing Club, Dramatics Club, 4-H Club, Banquet Server.



GLEND A RICH

(Glenda)

Beta Club, Glee Club, FHA, FTA Historian, Annual Aide, Spotlight Staff, Recreation Club, 4-H Club Vice President, Banquet Server.



CHARLES EDWARDS ROBINSON

(Charlie)

Beta Club President, Student Council, Spotlight Staff, Annual Aide, Letter Club, Football 3 years, Basketball 2 years, Recreation Club, FFA, 4-H Club.



BETTY JEAN RICH

(Betty)

Beta Club, FHA Treasurer, Annual Aide, Spotlight Staff, Recreation Club, FTA, Glee Club, 4-H Club President.

RODDIE LEE SLOVENSKY
(Roddie)
Transfer from Odenville.

DAVID EARL SMITH, JR.
(Earl)
4-H Club, Recreation Club, Photography
Club, Science Club, Bus Drivers Club.



DORIS DIMPLE SMITH
(Doris)

4-H Club, Nursing Club, FHA, Recrea-
tion Club, Spotlight Staff, Dramatics
Club.

RALPH NATHAN SMITH
Letter Club 2 years, Photography Club,
Dancing Club, 4-H Club, Banquet Ser-
ver.



BOBBIE JEAN ST. JOHN
(Bobbie)
FHA 3 years, FHA reporter and Vice
President, 4-H Club, Nursing Club,
Glee Club.

GLORIA ANN THOMAS
(Ann)
Cheerleader 2 years, Beta Club, Glee
Club 2 years, Student Council Vice
President, Senior Class Representative,
Recreation Club, Dancing Club, Annual
Staff Business Manager, Spotlight Staff,
4-H Club, Dramatics Club, Banquet
Server, Letter Club.





JERRY LOUISE TRUITT

(Jerry)

Editor of Pelmel, Student Council, Cheerleader, Assistant Society Editor of Spotlight, Circulation Manager of Spotlight, Spotlight Staff, Beta Club, Letter Club, Dancing Club, Glee Club 2 years, 4-H Club, Recreation Club, Dramatics Club, Banquet Server.

MARY LYNN VINES

(Mary Lynn)

4-H Club, FHA Treasurer, Recreation Club, Beta Club, Student Council, Spotlight Editor, Dramatics Club.

CLARENCE LAMAR WALKER

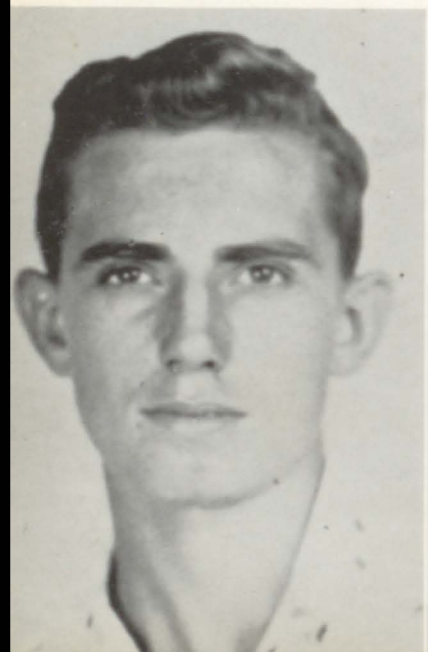
(Lamar)

4-H Club, Photography Club, FFA.

WILLIAM HENRY WALKER

(Billy)

Photography Club, Dancing Club, 4-H Club, Art Club, FFA, Recreation Club.



LORENZO LEE WHEELER, JR.

(Ren)

Recreation Club, Bus Driver Club, Dramatics Club, Basketball, Spotlight, Annual Staff, Banquet Server (Head).

JANET SYBIL WIGGINS

(Janet)

FHA 2 years, Recreation club, Secretary of Nursing Club, Assistant Editorial Editor of Spotlight, Glee Club, 4-H Club.



RAYMOND FRANCES WILLINGHAM
(Raymond)

Drum Major, Band, Glee Club, Citizen-
ship Club, FFA Sentinel, Bible Club,
4-H Club.

MARY HERRON

(Mary)

Transferred from Carbon Hill High
School.



SENIOR CLASS SPONSORS

Coach Rogers, Mr. C. C. Lee, Mrs. Sarah Mewbourne



Jerry

Janet

Wayne

Bonnie

Betty R.

Teddy

Carolyn A.

Mary Nell

Jeanette M.

Carolyn K.

Annette H.

Annette F.

Marvin

Billy

Doris Faye

Glenda Faye

Eugene

Jo Ann

Sandra

Glenda

Douglas

Doris

Sarah

Betty

Barbara

Verben

Juanita

Gene

Charlie

Curtis

Jerry Joe

Ann

Mary Jim

Benny

Jeanette G.

Charlotte

Boot

Joyce

Valdor

Bobby L.

Judy, Sylvia

Bobbie Jean

Mary Lynn



Juniors

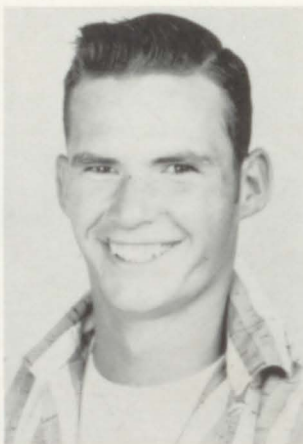


Junior Class Officers

ANN PARMER, KENNY KING, SANDRA JOHNSTON, MIKE HARVEY, ROSEMARY EDMONSON.



ABERCROMBIE,
CHAROLETTE



ALEXANDER,
JOHNNY



ARMSTRONG,
ALICE



ARNOLD,
JEANETTE



BARBER,
ROBERT



BARBER,
WYNELL



BLANKENSHIP,
CARL



BLANKENSHIP,
NANCY

JIMMY BROWN
JOHNNY BROWN
WAYNE BROWN



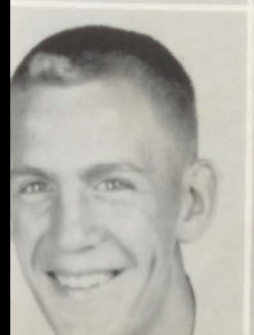
PATSY BRYAN
PAUL BRYANT
BOBBY BURNHAM



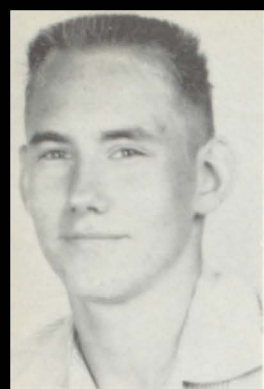
CATHEREN CARDEN
WAYMOND CARLISLE
BETTY JEAN CASTLEBERRY



BRENDA COLLETT
JOSEPHINE CRUMP
PAUL DAVIS



EVERETT DILL
MURIEL DUROUGH
ROSEMARY EDMONDSON



DICKEY ELY
JACK FINCH
BOBBY FLEMINGS



JOHN GANN
JOYCE GARNER
MARGARET GARRISON

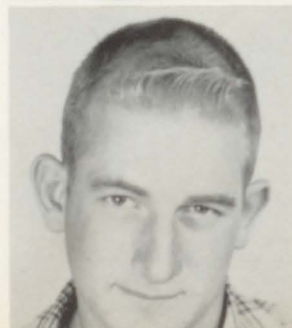
GAYLE GEORGE
JEAN GOODGAME
MARIE GOODWIN



LELWIN GORE
PAT GRAVETTE
PATRICIA HALL



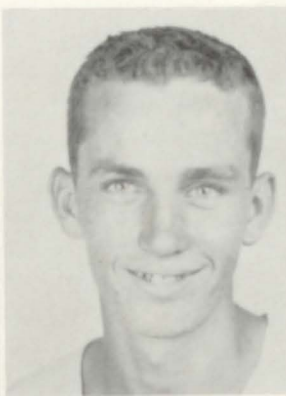
GERALD HARDWICK
RACHEL HARDWICK
SAM HARMON



LINDA LOU HARRIS
MIKE HARVEY
GRANT HAZELWOOD



THURMAN HENNINGER
SARA LOU HILL
BETTY LOU HOLLIS



GLADYS JACKSON
ROY JACKSON
SANDRA JOHNSON



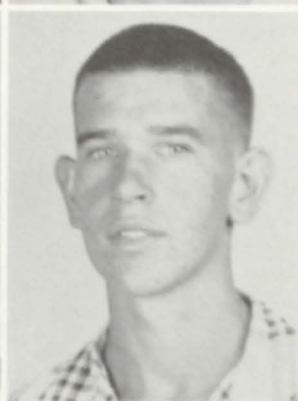
BETTY JOYCE KELLER
JOLLIE SUE KIDD
KENNY KING



LINDA LAWRENCE
FRANCES LEE
RUDOLPH LEE



THOMAS DALE LEE
DOROTHY MACON
LEE MEEKS

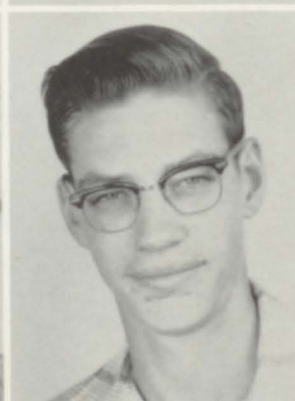


GAIL MERRY MON
MARILYN MILLER
JERRY MORROW

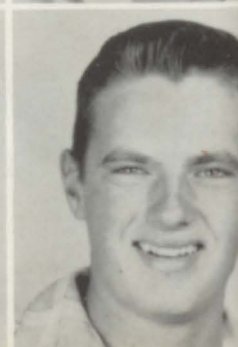
BILLY MOSS
BILLY RAY NEWTON
FAYE PARKER



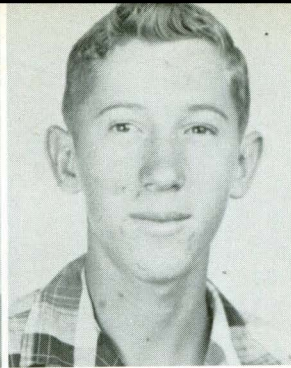
ANN PARMER
JIMMY PARTRIDGE
TED PATTERSON



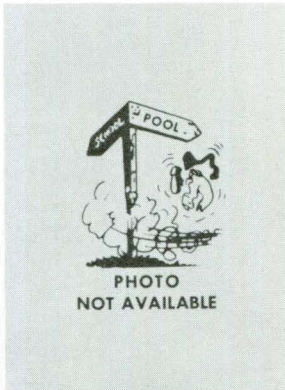
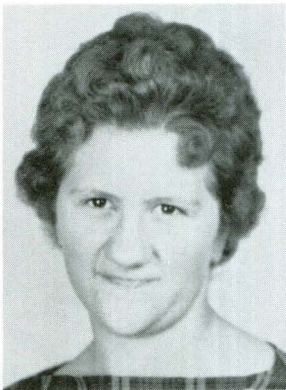
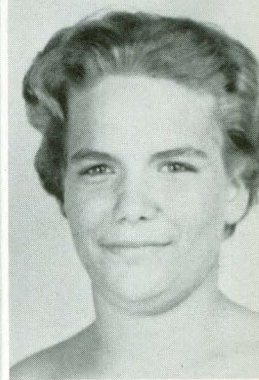
GLADYS PEAVY
ELLIS PERRIN
BILL PHILLIPS



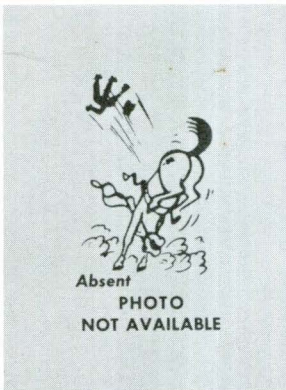
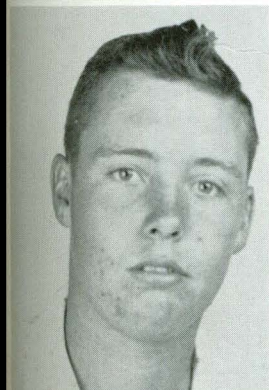
ROBERT POWELL
LELAN PUTNAM
PAT REECE



JEAN RICH
HOWELL RICHARDSON
SHAUGHNEEN RILEY



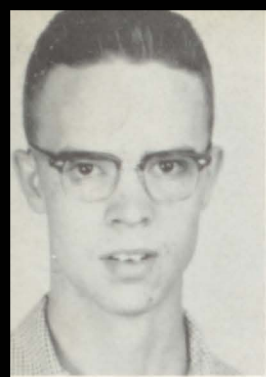
JIMMY ROBERTS
JANE ROBERTSON
TERRY ROBERTSON



W. C. ROE
DOUGLAS RONEY
FAYE ROOKER



JIMMY SIMPKINS
BARBARA SMITH
BOBBY SMITH



JACKY LANE SNOW
JACK STEWART
BARBARA VINES



ROBERT WALLIS
JACK WEAVER
ROSE ANN WHEELER

BUDDY WHITTEN
BETTY WILLIAMS
CELIA WILLIAMS



DWIGHT WILLIAMS
BETTY WILLIAMSON
HAROLD DEAN WILLIAMSON



PHOTO NOT AVAILABLE

HOYT WILLIAMSON
SHUG WILLINGHAM
DON WILLIS





Sophomores

Edwin Adams
Charles Barber
Jack Barber
Jerry Bell
Mary Francis Bice



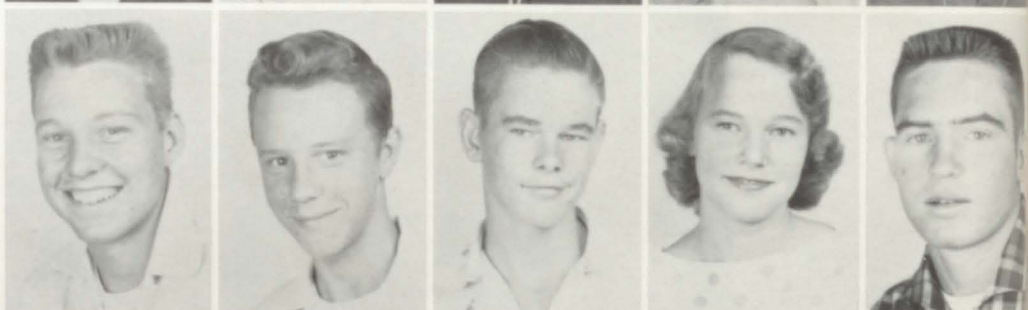
Joe Black
Patricia Blankenship
Pattie Nell Bowman
Howard Brewster
Barbara Brown



Sharon Burns
J. W. Carreker, Jr.
Mary Carroll
Frank Carson
Billy Castleberry



Steve Chambers
Henry Clapper
Leon Clements
Mary Clements
Jimmy Cole



Linda Coshatt
Bonnie Davis
Tommy Davis
Joe Doby
Sara Etness



Frank Finch
Patsy Funderburg
Brenda Gallups
Vivian Gardner
Joe Golden



Bernice Goodgame
 Fate Goosett, Jr.
 J. N. Goss
 Barbara Graham
 Katie Ann Gray



Carly Jo Green
 Billy Griffitt
 Martha Haisten
 Willie Hallman
 Elissa Hamilton



Pat Hamilton
 Hershel Hannah
 Robert Hannah, Jr.
 Bud Haynes
 Johnny Henninger



Carolyn Kay Hesterly
 Dimples Howard
 Helen Howard
 Jerrie Hunt
 Janis Isbell



Juanita Jackson
 Sherbie Lee Jackson
 Jeanette Johnson
 Juanita Johnson
 Jeanette Jones



Sylvia Lambert
 Barbara Lewis
 Claude Lee
 Dorothy Lee
 Gordon Lee



Jerry Lee
James Long
Rodney Love
John Luker
Johnny Luker



Tommy Luker
Betty Macon
Dean Macon
Martha Manning
Peggy Masters



Nancy Merrill
Carole Pemberton
Ezell Pilkington
Linda Polk
Fay Pugh



Wayne Richey
Faye Richardson
Carol Roberts
Roy Roe
Billy Earl Sanford



Elaine Savage
Bobby Gene Schell
Billy Sims
Jerry Sims
Sandra Sims



Mona Sission
Transferred
Edward Slay
Bobbie Lee Smith
Joe Smith
Jott Smith



Smith, Kay
 Smith, Sue
 Spradley, Karen
 Stevens, Sandra
 Stewart, Charles



Stokes, Nancy
 Sumner, Judy
 Taylor, Buel
 Taylor, Sandra
 Thomas, Pat



Thrasher, John
 Tims, Polly
 Turner, Peggy Jean
 Walker, Charles
 Walker, Sue



Wells, Johnny
 Williams, Richard
 Willis, Kay
 Wright, Bobby
 Wright, Faye Nell



Young, Johnny



CLASS OFFICERS
 Patricia Hamilton
 Sandra Sims
 Carly Jo Greene
 Jimmy Cole
 Rodney Love

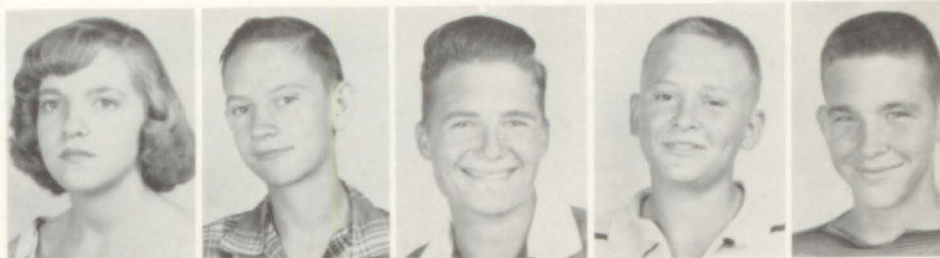




Freshmen



Shirley Adams
Joe Adams
Clarence Allen
Danny Alverson
Robert Bain



Janis Baker
Bobby Barber
Carolyn Barnes
Fred Bunn
Gerald Bowman



Laura Bowman
Marie Bowman
Ronald Bowman
Barbara Ann Brown
Barbara Jo Brown



Ronald Burnham
Francelle Callahan
Ellen Castleberry
Francis Castleberry
Sue Clinkscales



Emily Sue Crowley
Charles Dawson
Jane Deason
Jane Dorough
Foster Drummonds



Judy Drummonds
Bobby Eades
Edward Ensley
Clayton Fincher
Joe Flanders



Frankie Foster
Wayne Funderburg
Tommy Gann
Kaye Goodgame
Houston Graham

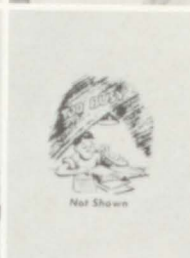




Linda Graham
Peggy Green
Ann Griffin
Bobby Gullledge
Terry Guy



Peggy Hale
Teddy Ray Hall
Elmer Harmon
Teddy Ray Harris
Robert Harrison



Dorothy Haynes
Earl Hazlewood
Nancy Henniger
Peggy Higginbotham
Jerry Holladay



Buddy Hollis
Joan Hollis
Sarah Holmes
Jackie Hunter
Joy Ingram



Claudine Isbell
George Isbel
Carolyn Jones
Doris Ann Jones
Sarah Jones



Treasure Ann Jones
Wayne Kendrick
Douglas Lawrence
Shirley Sue Lee
Jean Lonergan



John Lonergan
George Lovell
Carol Lovell
Wanda Kaye Lovell
Mary Ann Lowery





Deroll Luker
Wilma Manning
Margaret Meadows
Adonis Milan
Sue Miller



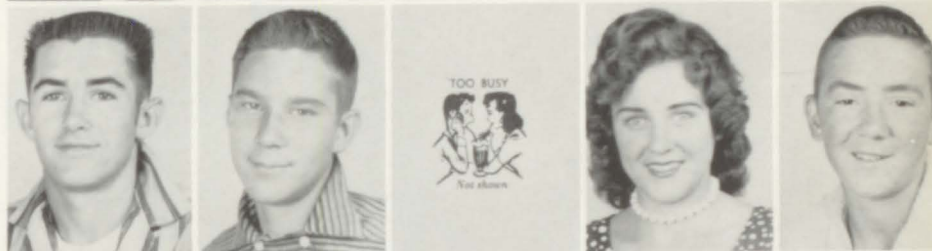
Ernest Mitchell
Thaila Jo Morrow
Patricia Mulverhill
Rogie Newton
Myrna O'Barr



Patricia Overton
William Parker
Joyce Partridge
Susie Patterson
Johnny Perkins



Don Polk
Larry Presley
Faye Ramsey
Glynda Ramsey
Mike Reese



Earl Rich
Noah Rich
Norma Jean Rich
Sammy Rich
Richard Robertson



James Sergearant
Larry Scott
Brenda Selby
Judy Sisson
Sandra Skeleton



Ann Snelling
Burnett Smith
Mickey Smith
Authur Spicer
Rodney Stephens



Betty Lou Stevens
Larry Stone
Dennis Sweatt
Raymond Sweatt
Ann Sweenly



Sandra Terrell
Henry Thompson
Jennie Lynn Thompson
Mary Tipton
Ralph Todd



Harry Tucker
Larry Tucker
Dwight Turner
Jack Turner
Mary Turner



Sara Tuttle
Billy Vaughn
Barbara Walker
Bennie Ray Walker
Billy Walker



Jerry Walker
Mary Ann Watlington
David Williams
Margaret Williamson
Sam Willis



Bobby Winslett
Carolyn Jean Wright



Jerry Holladay
Richard Robinson
Don Polk
Janice Baker
Mary Turner





Favorites [☆]

Most Beautiful
GLENDA RICH



Most Handsome
PHILIP HARMON





Most Popular
ANN THOMAS and VALDOR HALL



Most Intellectual
TEDDY HIGGINBOTHAM and ANNETTE PEMBERTON



Most Likely to Succeed
CAROLYN KINCAID and BOBBY LLOYD



Best All Around
LINDA BOWMAN and HOMER BOWMAN



Friendliest
MARY JIM INGRAM and LORENZO WHEELER



Most Athletic
JUDY DOROUGH and BOOT RICH



Most Courteous
JIMMIE LOU MASTERS and WAYNE ADAMS



Most Dignified
SYLVIA ADAMS and CHARLES ROBINSON



Best Sport
JERRY TRUITT and BOBBY BANKS



Best Personality
PHILIP POLK and BARBARA FRAZER



Best Dressed
JO ANN DAVIS and BENNY MULVEHILL



Most Dependable
ANNETTE HAMILTON and VERBON HALL



Most Talented
GENE O'BARR and SANDRA MASHBURN



Cutest Couple
BETTY FRAZER and CURTIS GRAY



Neatest
BOBBIE ST. JOHN and DOUGLAS RICH



Biggest Flirt
JACKIE DONAHOO and JERRY JOE HOWARD



Wittiest
JANET WIGGINS and CHARLES BROWN



Activities

The JUNIORS CANDY



PRESENT LAND





Homecoming Queen 1956-57

MISS SYLVIA ADAMS



Homecoming Queen and Court

Pat Gravette, Betty Roe, Sylvia Adams, Queen, Doris Ann Truitt, Susie Patterson, and Glynda Kincaid.





Miss Pell Hi 1956-57
MISSSES BETTY and BARBARA FRAZER



THE CROWNING OF MISS PELL HI

VALDOR HALL, President of Student Council
MISS JACKIE HAZELWOOD, Miss Pell Hi of '55-'56

MISSES PELL HI
and her
COURT
MISS ANN THOMAS and MISS WANDA LOVELL





New Year's Eve Queen

MISS MARY NELL ALLEN





JUANITA GRIFFITT
Member of McCall's
Fashion Board



GERALD HARDWICK
Most Valuable Lineman



KATIE ANN GRAY
Delegate to National
4-H Convention in
Chicago.

Honor Page



LINDA BOWMAN
Good Citizenship
Girl



CHARLES ROBINSON
All-County
Basketball Player
Served as a Page in
Capitol, Montgomery,
Alabama.

F.F.A. Sweetheart
CAROL SUE ROBERTS

Most Valuable Back
BOOT RICH

Delegate to 41st
Conference of Order
of the Arrow.
JOHNNY HENNINGER





We ain't what we used to be



New hair-do



Smile your troubles away



Real smooth



Jeke????



In the Good Ole Summertime



The pause that refreshes



Hey, what's the answer



Dignified Seniors



Once



When we were young



Sweethearts



Steadies



u don't mean it?



I see you



Bobbie and Nancy last Easter



Tildy



Ah, Come on!



Jitterbug



It's wet



Thinking about Johnny?



And they say we're the best.



Lake Rhea



Freshmen then-Seniors now



Rosey



Curt's new helper



Sib



Sitting Pretty



Sunny side of town



The Good Ole Days



Hayride Saturday Night

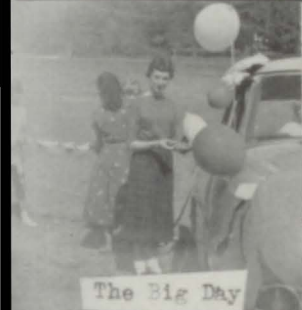


Sandy



Ever Ballet?

Mad? No



The Big Day



It's raining



Man's best friend



Gang or gangsters



Unexpected Moment



Riding the Waves



My new Easter Outfit



Be-Bop



Therman and Rex



Boysology



Jerry



I'm mean



On Our Merry Way





Organizations



PELMEL EDITORS

CAROLYN KINCAID
CO-EDITOR

JERRY TRUITT
EDITOR



Pelmel Staff

Wayne Adams, Sports; Jerry Truitt, Editor; Carolyn Kincaid, Co-Editor; Ann Thomas, Business Manager; Annette Pemberton, Assistant; Jo Ann Davis, Typist; Mary Jim Ingram, Advertising; Barbara Frazer, Assistant; Mrs. Sara Mewbourne, Sponsor; Betty Frazer, Photography; Mary Nell Allen, Circulation.

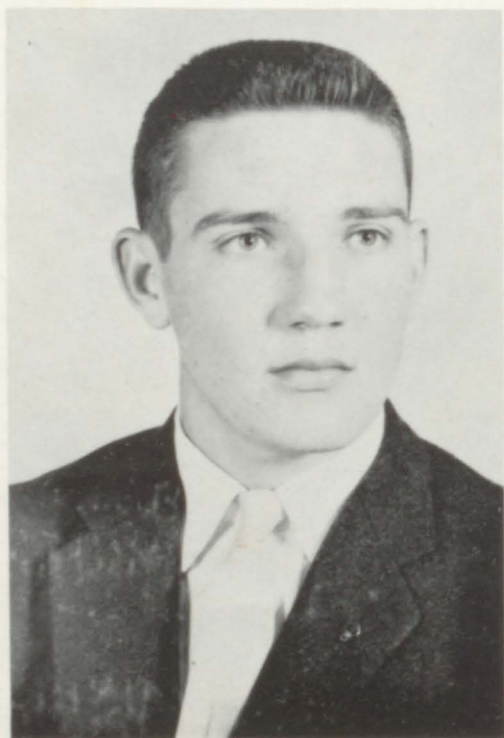


Pelmel Aides



Student Council Officers

Valdor Hall, President; Jacky Snow, Treasurer; Linda Bowman, Secretary; Bobby Burnham, Reporter; Thurman Hinniger, Vice President.



The President Speaks

To My fellow students:

I wish to thank each of you for your splendid cooperation during this school year. Each student and teacher has been an inspiration. I feel this has been one of the best years at Pell City High School. Although we have had some troubles, we have also had some very happy occasions. I have learned a good bit from serving you this year. I wish to take this opportunity to thank you, students and teachers, for all the help and trust you have given me. May you have the best throughout life.

Sincerely,
Valdor Hall



Student Council



Beta Club



Letter Club



Spanish Club



Spotlight Staff

Miss Anne Carolyn Waite, Sponsor; Barbara Vines, Mary Lynn Vines, Editor; Joyce Gibbs, Co-Editor; Linda Bowman, Sylvia Adams, Lorenza Wheeler, Judy Sumner, Lenora Johnson, Katie Ann Gray, Linda Lawrence, Bobby Lloyd.



Spotlight Aides



Glee Club



Band and Majorettes



Future Farmers of America



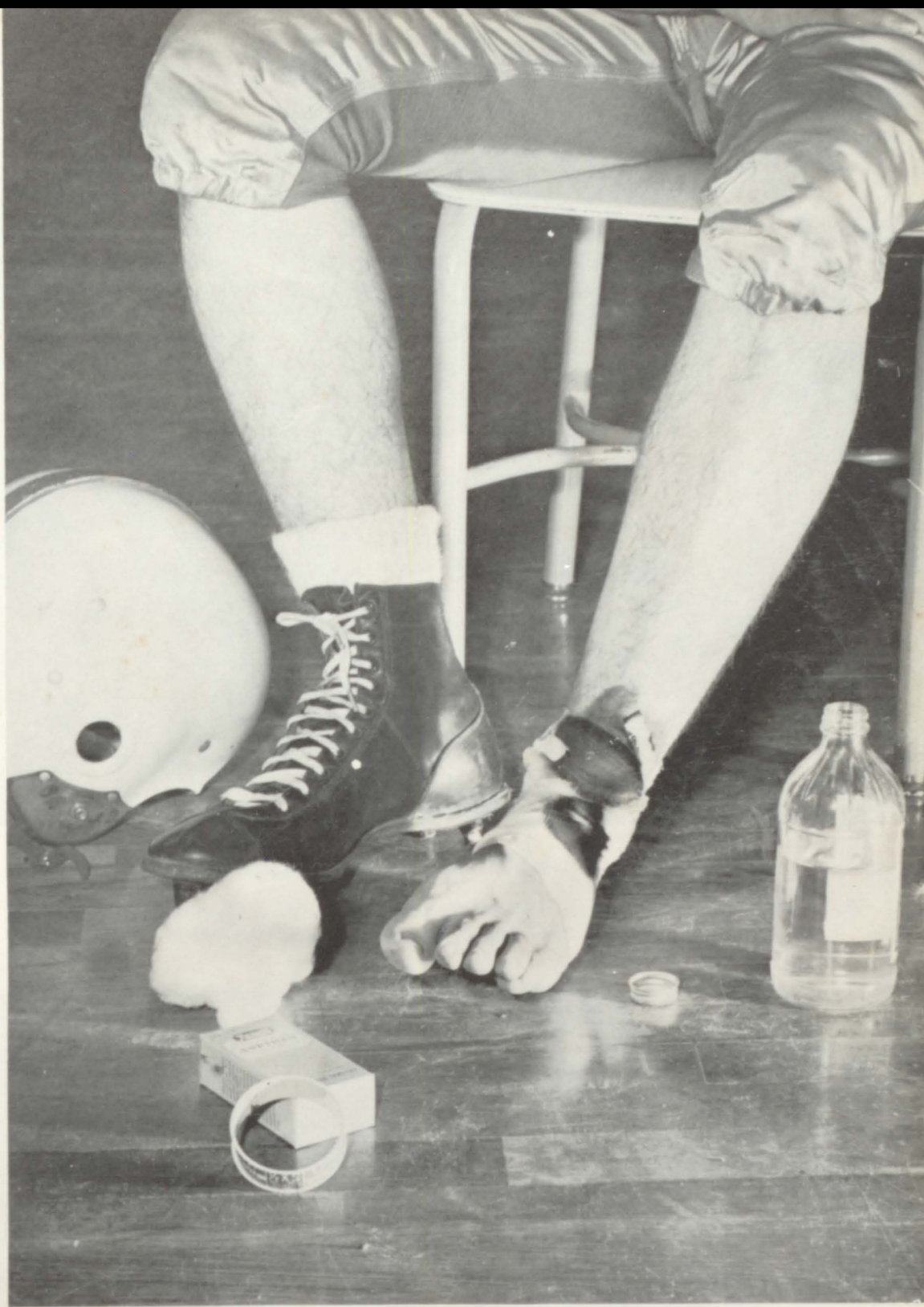
Future Homemakers of America



Art Club



Future Teachers Club



Athletics ☆



Cheerleaders

Betty Frazer, Head; Keren Howell, Mascot; Barbara Frazer, Head; Bobbie Smith, Faye Rooker, Judy Dorrough, Ann Thomas, Jerry Truitt, Frances Lee, Keren Spradly.



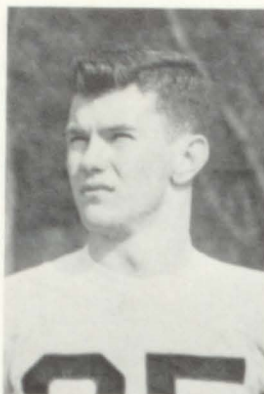


Coaches and Captains

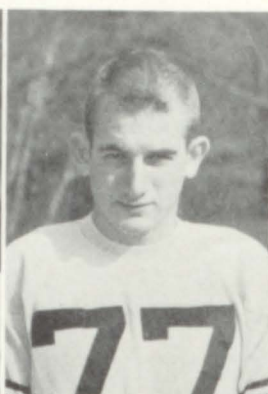
Coach Will Glover, Assistant Coach Bill Howell, Captain Valdor Hall, Co-Captain Boot Rich, Assistant Coach Tommy Rogers.



'56 SQUAD



BOBBY
FLEMING



GERALD
HARDWICK



GRANT
HAZELWOOD

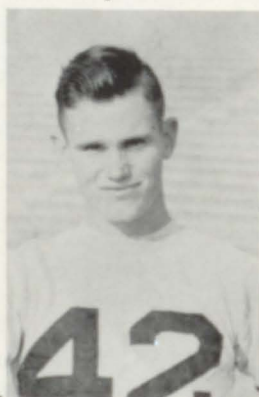


JOHNNY
ALEXANDER

PANTHERS

SCORE

	September	14	13
*	September	21	19
	September	28	6
*	October	5	31
	October	12	13
*	October	19	26
	October	26	6
*	November	2	19
*	November	9	53
	November	16	7
* Panthers Won			



BOOT
RICH



BOBBY
BANKS



CURTIS
GRAY



CHARLES
ROBINSON





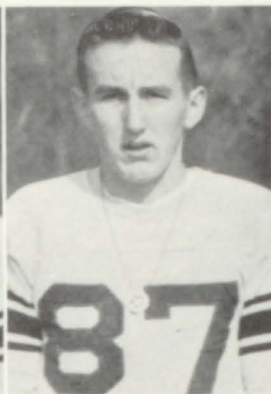
VALDOR
HALL



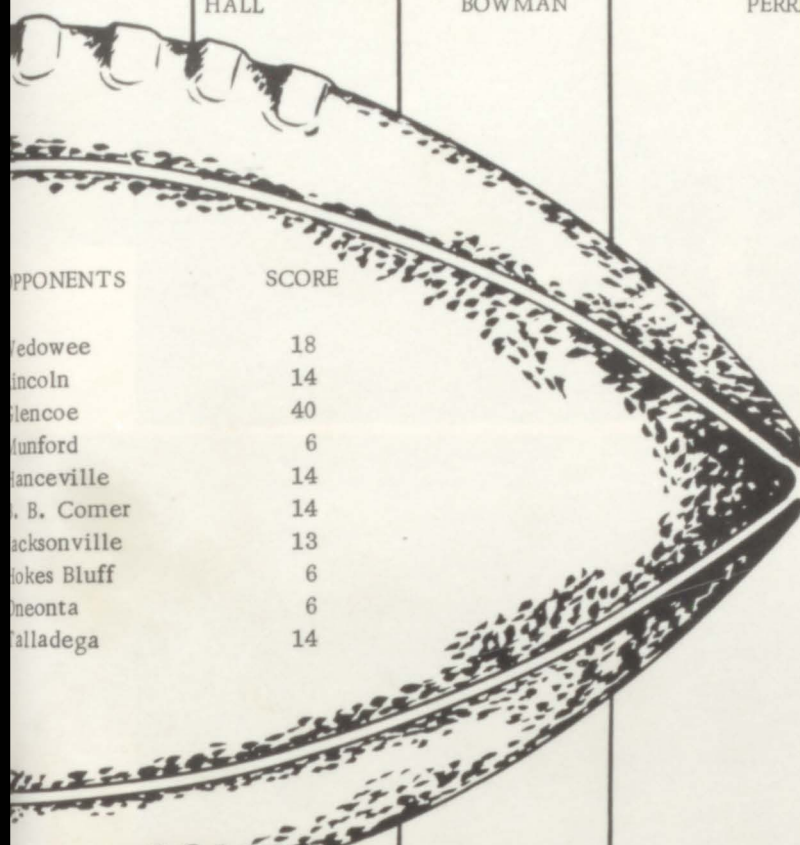
HOMER
BOWMAN



ELLIS
PERRIN



EUGENE
BYNUM



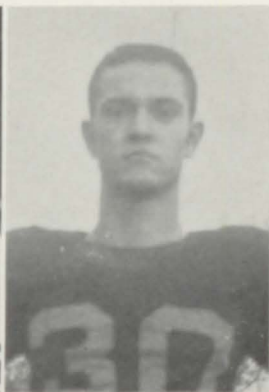
OPPONENTS	SCORE
Medowee	18
Lincoln	14
Glencoe	40
Funford	6
anceville	14
A. B. Comer	14
Jacksonville	13
Jokes Bluff	6
neonta	6
alladega	14



BILL
PURVIS



BENNY
MULVEHILL



WAYNE
ADAMS



WOODROW
ADAMS





BACKFIELD

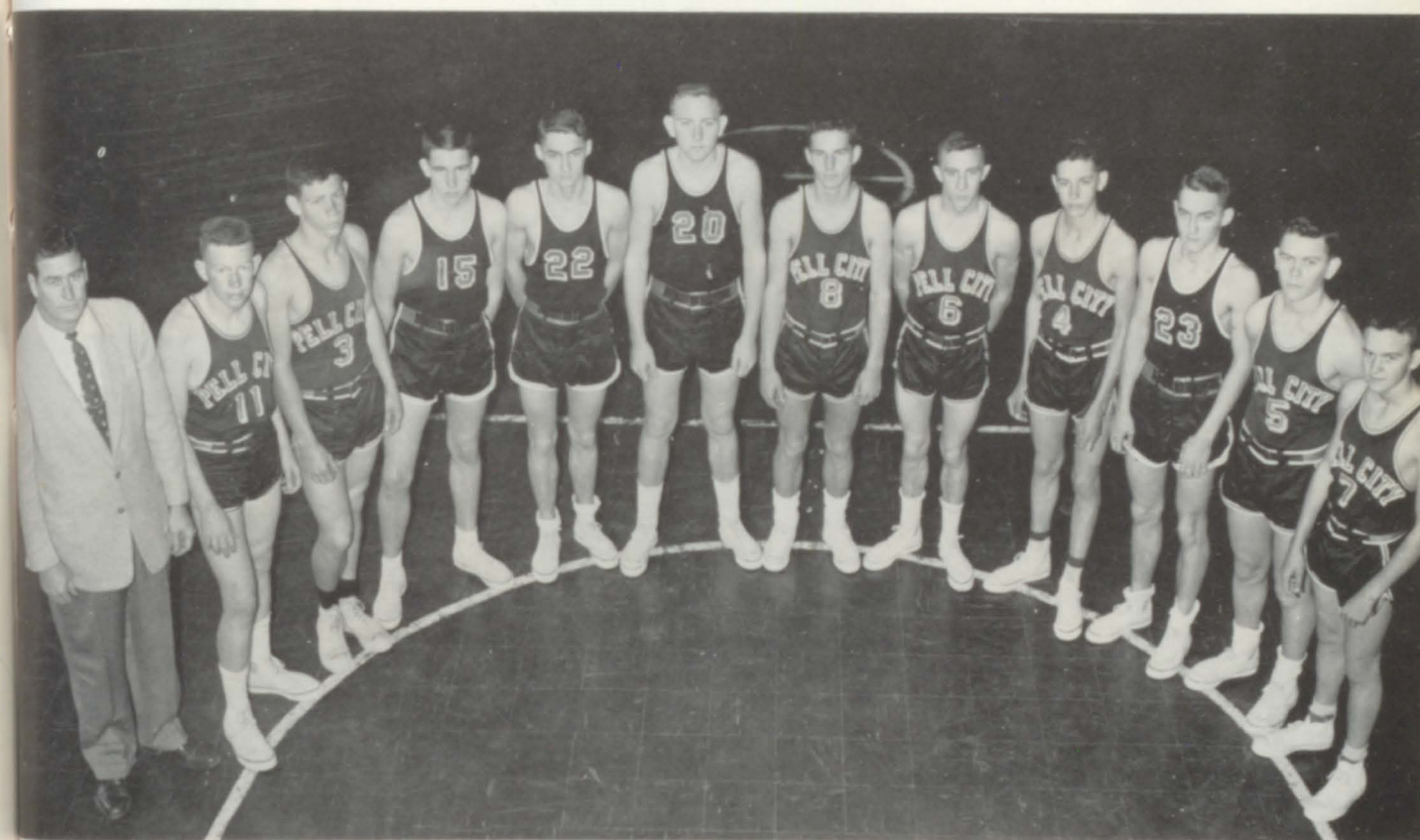


MAJORETTES



"A" Team

Coach Rogers, Mike Harvey, Paul Davis, Philip Harmon, Charles Robinson, Captain; Don Willis, Gerald Hardwick, Bobby Fleming, Roy Roe, Woody Adams.



"B" Team

Coach Glover, Jerry Walker, Foster Drummonds, Bob Bain, Tommy Luker, Ronald Dean Burnham, Ludford Harmon, Doc Turner, Hershel Hannah, Johnny Luker, Richard Robertson, Earnest Mitchell.



CHARLES ROBINSON



PHILIP HARMON



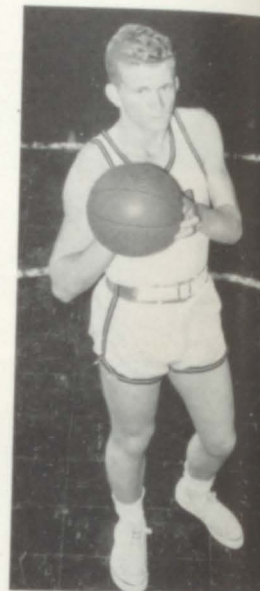
GERALD HARDWICK



DON WILLIS



BOBBY FLEMING



ROY ROE



PAUL DAVIS



WOODY ADAMS



MIKE HARVEY



Advertisers[☆]

Congratulations

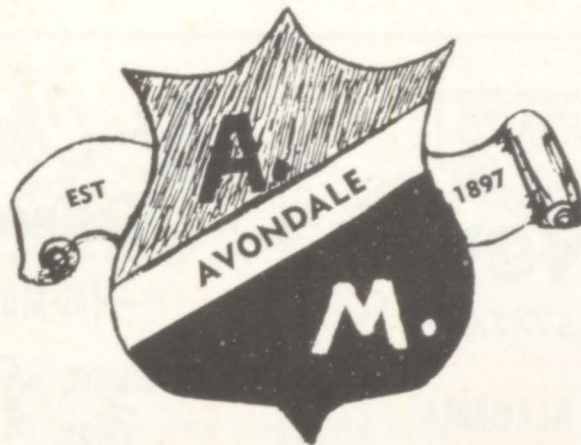
1957

to the graduating class



BOTTLED UNDER AUTHORITY OF THE COCA-COLA COMPANY BY
ALABAMA COCA-COLA BOTTLING COMPANY

AVONDALE



MILLS

Founded By

Governor B. B. Comer

In 1897

General Office: Sylacauga, Alabama

Sublett

MUSIC SHOP

"Pell Citys Exclusive
Music Shop"

• 1706 COGSWELL •

Phone 181

Vaughan

RADIO SERVICE

Pell Citys Oldest
—TV Service—



TRIANGLE

SERVICE STATION

PELL CITY, ALABAMA

St. Clair

Business College

HARMON BLDG.

OWNER and OPERATOR

Faye J. Whittle

COMPLIMENTS

Dr. A. F. Riser

OFFICE PHONE

295

NEW & USED
FURNITURE

Pell City

FURNITURE

1710 COGSWELL AVE.

RADIO

WFHK

STATION

Your Local
NEWS



Station for
MUSIC

The St. Clair Broadcasting System INC

Union
STATE BANK

Member of Federal Deposit Insurance Corporation

"54 Years of Service"

Pell City, Alabama

"Best Wishes"

from

Mays & Jones

The People's Store

Headquarters for Better Values

C. & H.
COMPANY

Pell City, Alabama

SALES



SERVICE

ST. CLAIR
MOTOR COMPANY

Phone 141

Pell City, Alabama

Compliments of

Holsum Bread

ST. CLAIR

BEAUTY SALON

Phone 531

2012 Cogswell Avenue

Owned and Operated
by
FAYE KINCAID

Bud's

GRILL

Short Orders - Sandwiches

Phone 9221

Pell City, Alabama

Compliments of

PELL CITY

HARDWARE

Pell City, Alabama

Compliments of

Kilgroe

FUNERAL HOME

Pell City, Alabama

Congratulations to Seniors

*J.A. (Pete)
Fambrough*

Member of Board of Education
St. Clair County

HUNTER

MATTRESS
AND
SEAT COVER COMPANY

Expert Upholstery

Phone 519

Pell City, Alabama

Compliments of

PELL CITY

MOTOR CO.

Your Lincoln-Mercury Dealer
Sales - Service

Pell City, Alabama

Phone 18

BLAIR

STUDIO

Commercial Photography
--Portraits--

St. Clair News-Aegis Bldg.

Pell City, Alabama

Call 22 for Appointments

Compliments of

Snider's

FLOWER SHOP

Pell City

Phone 11-M

Compliments

BELL
HARDWARE CO.

Pell City

Phone 195

Compliments

Jinn
GROCERY

Pell City

Phone 167

JOHN L. BARBER

TOM F. BARBER

BARBER
SALES COMPANY

Distributor

"Tom's" Toasted Peanuts - Fine Candies and Peanut Butter
Sandwiches

Res. Phone 2-2534

Talladega, Alabama

Office Phone 2-3115

Williams

BEAUTY SHOP

For the New Look
"See Sook"

Phone 70-J

Prop. SAVANNAH WILLIAMS
Oper. MARGARET OGLE

Read:

THE
ST. CLAIR
NEWS-AEGIS

Everything That's Worth
Reading
in

St. Clair County

Phone 22

JEFFERSON

HOME FURNITURE CO.

"St. Clair County's Outstanding Furniture Store"

Pell City

Ragland

Citizen's

DRUG

As Near as Your Phone

Pell City, Alabama
Phone 289

Compliments of

"NIXONS
SERVICE STATION"

(DILL'S)

Pell City, Ala.

Phone 9285

PELL CITY
GROCERY AND MARKET

For Quality

JAMES INGRAM, Owner

ROY HOLLADAY
MOTORS

Dodge
and
Plymouth



PELL CITY'S
FIVE AND TEN

Self-Service Shopping

PELL CITY
Cleaners

"Our Cleaning Decidedly Better"

Phone 113J

COMMUNITY
CLEANERS

"The Very Finest
in Dry Cleaning"

Phone 72

FELDSER'S
VARIETY STORE

Pell City, Alabama

Compliments of

DR.

Roy Coshatt

Pell City, Alabama

Compliments of

TED R.
HAMMETT

INSURANCE AGENCY

Insurance of All Kinds

Pell City, Ala.

Pell City

Dairy Queen

for

Malts, Sundaes, Cones

Compliments of

RAGLAND
LUMBER CO.

Ragland, Alabama

Compliments of

PELL CITY
AUTO PARTS

Pell City

Phone 142

Compliments of

Robersons

Pell City

Phone 123

Compliments of
ALLEN'S BARBER SHOP
Pell City, Alabama

CENTERVIEW SERVICE STATION
E. C. MARTIN - Owner
Pisgah, Alabama

Compliments of
RAY WYATT
CHEVROLET
Pell City, Alabama



LAMB'S
TRADING POST

Grocery and Service Station
London, Alabama

Compliments of
HARMON BROTHERS HDW.
Pell City, Alabama

VILLAGE BARBER SHOP
JOHNNIE WILLIAMS
Pell City, Alabama

Call by Number - It's Faster

COOSA VALLEY
TELEPHONE CO.



Pell City, Alabama

ST. CLAIR
FARMERS EXCHANGE, INC.
Pell City, Alabama

Compliments of
A
FRIEND

Compliments of
SAXON'S
CANDY COMPANY

Pell City, Alabama

Compliments of
COHEN'S

Congratulations to Seniors

MR. TY WOOD

DR.
CLEVELAND'S
CHIROPRACTIC CLINIC

Health Is Natural
Why Be Sick

Pell City, Alabama

Regular Meals - Short Orders

White Palace

CAFE

Ragland, Alabama

Where Friends Meet Friends

"IF IT'S



Compliments of
WILKINSON
PURE OIL SERVICE
STATION

Pell City, Alabama

North - Highway 25

Compliments of
CHAMPION
REXALL DRUG CO.



Ragland, Alabama

Compliments of
SAKS HARDWARE
COMPANY

Anniston, Alabama

**TURNER'S
TV**

Sales and Service
GE Appliances - Dumont
and Sylvania TV
Pell City, Alabama
Phone 310

Compliments of

PELL

CITY TIRE REBUILDERS
Guaranteed Quality Recapping
11 South 20th Street
Phone 89
Pell City, Alabama

Compliments of

CLEMENT'S
SERVICE STATION

Pell City, Alabama

Compliments of

SCOTTY'S RESTAURANT

Pell City, Alabama

MATTHEWS BARBER SHOP

Shines - Showers
Pell City, Alabama

Compliments of

LOVE PONTIAC

Pell City, Alabama



Compliments of

L. G. BALFOUR CO.

E. G. FITZGERALD, GENE FITZGERALD AND
JIM JOHNSON

Rings - Invitations - Cards - Diplomas

P. O. Box 1072

Birmingham, Ala.

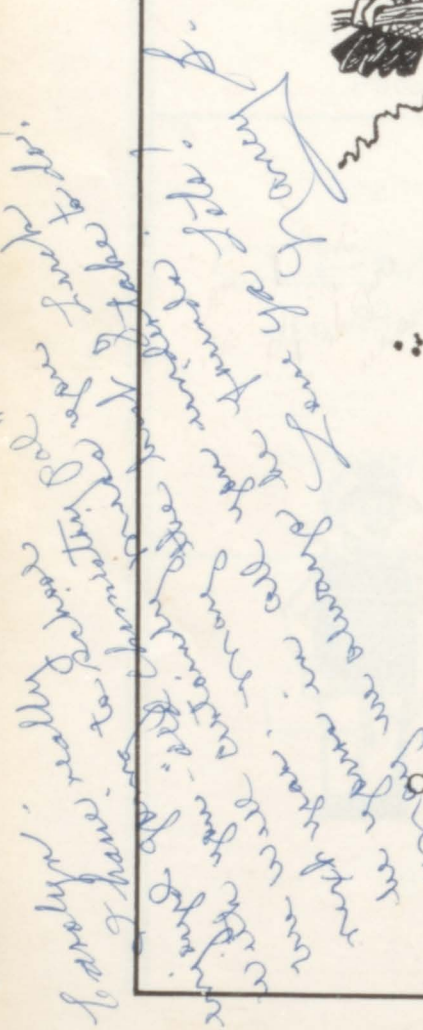
Congratulations to Seniors

Our Best Wishes to You in All That You May Do

Anniston - Talladega



Keep Alabama Green



COOSA RIVER NEWSPRINT COMPANY

Coosa Pines, Alabama

Compliments of

PELL CITY

FLOWER & GIFT SHOP

Pell City, Alabama

Compliments of

ALSE
SCOTT

TAX COLLECTOR

Compliments of

HARBIN & STAPLES

Easonville, Alabama

Compliments of

OLAN MILLS STUDIO

1121 1/2 Nobel Street

Anniston, Alabama

THANK YOU, DONATORS

SENIORS

Compliments of

LEEDS HARDWARE

Leeds, Alabama



COMPLIMENTS OF

Pell City
Rexall
DRUG CO.



Pell City, Alabama

Phone 126

Compliments of

J. D.
HAMMETT

GROCERY

Wattsville, Alabama

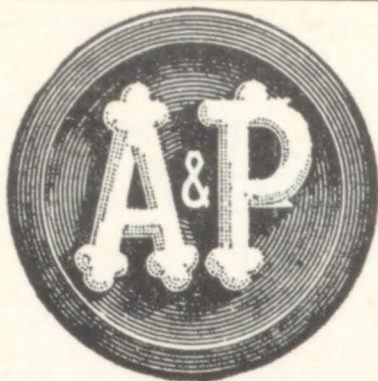
Compliments of

A FRIEND

Compliments of

ALABAMA POWER COMPANY

Pell City, Alabama



No Coffee at Any Price
Gives You More
Good Cups Per Pound
Than A&P COFFEE

OSBORN BROTHERS

231 North 3rd St.

Attalla, Ala.



LLOYD
Sign
SERVICE
HARMON BLDG.



THANK YOU, DONORS

The Seniors

Compliments of

**CHASTAIN-ROBERTS
COMPANY**

WHOLESALE GROCERS

Anniston, Alabama

Compliments of

James E. Harrison

Royal Typewriters

*Go on girl sweetie!
and I know I sincerely
hope you will always
have the very best of
luck, that a girl like
you deserves.
Love
Jean P.*



Ring celebration



Sunday leisure time



Queen Mary



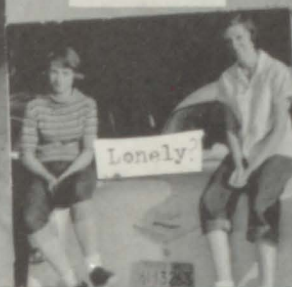
Cool Man---



You move!



Washington Bound



Lonely



Posing



The girls can't help it..



"Into the Night"



Hey, wait !!



Dreaming



"Lonesome Polecats"



After School



"Young Love"

Who plays football?
Judy, Jerry, or Boöt?



Bachelors



After a very large meal



Our Sponsor



Ever hear about the
"STICKS"?



Steady Go



"Mr. Sandman"



We, the 1956 Pelmel Staff, offer our heartfelt thanks to the people that have helped us make this yearbook possible.

We wish to thank our very loyal and helpful advisor, Mrs. Sarah Mewbourne, Van Blankenship, our photographer; and Bobby Lloyd, our artist. We hope you feel rewarded with the finished product.

At last, but not least, we hope that you, the students, cherish the memories and recollections that this annual holds.

Love
Pat Stewart

To a new
sweet girl
who is always
Polite and is
truly a digni-
fied senior
Bill Phillips

To a real sweet girl
who asked me to sign
her annual and didn't
leave me room to write
(H+). I wish you + Jim the
Best. Life can afford for
two more years.
Love
Pat Stewart

