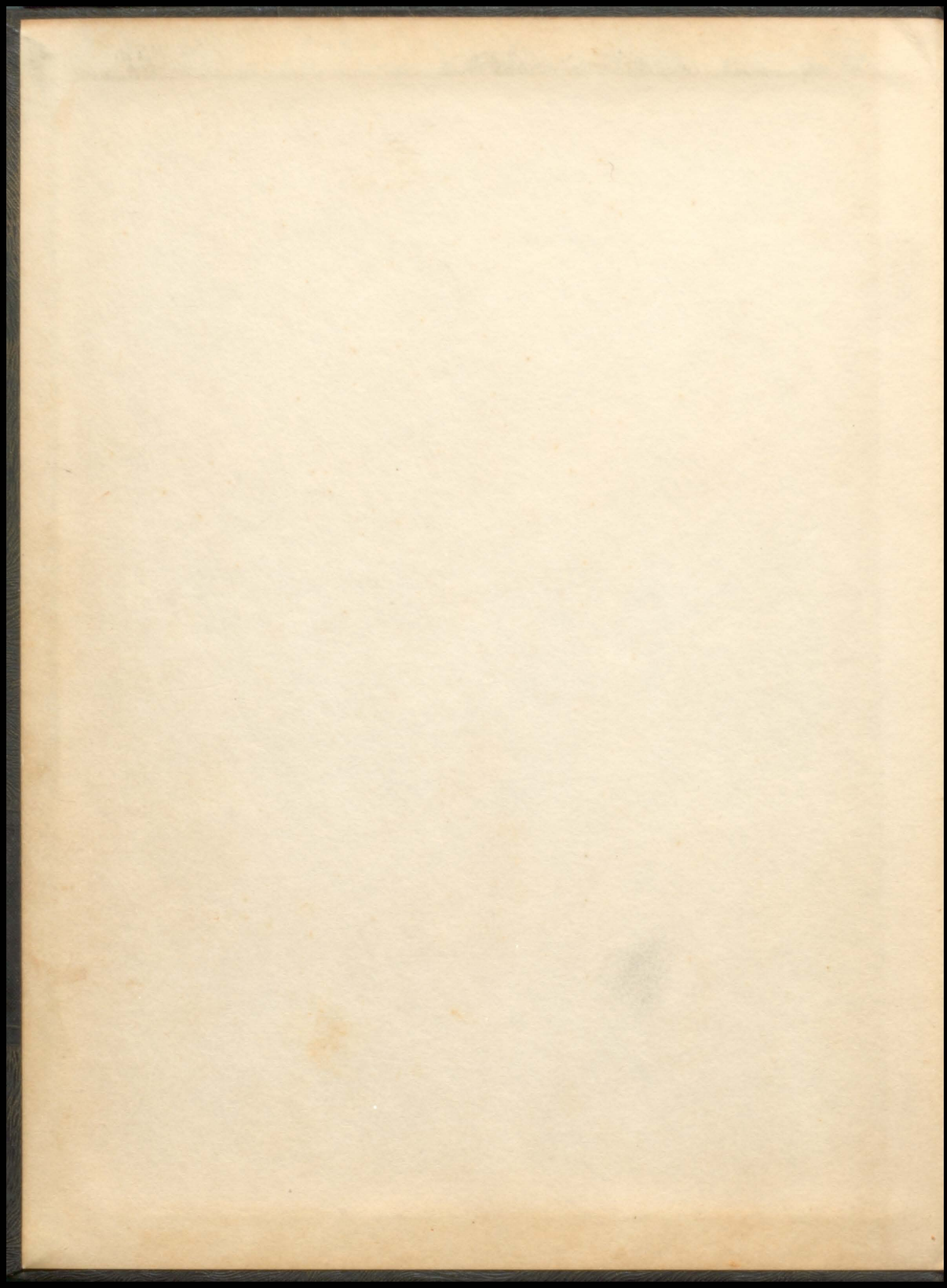
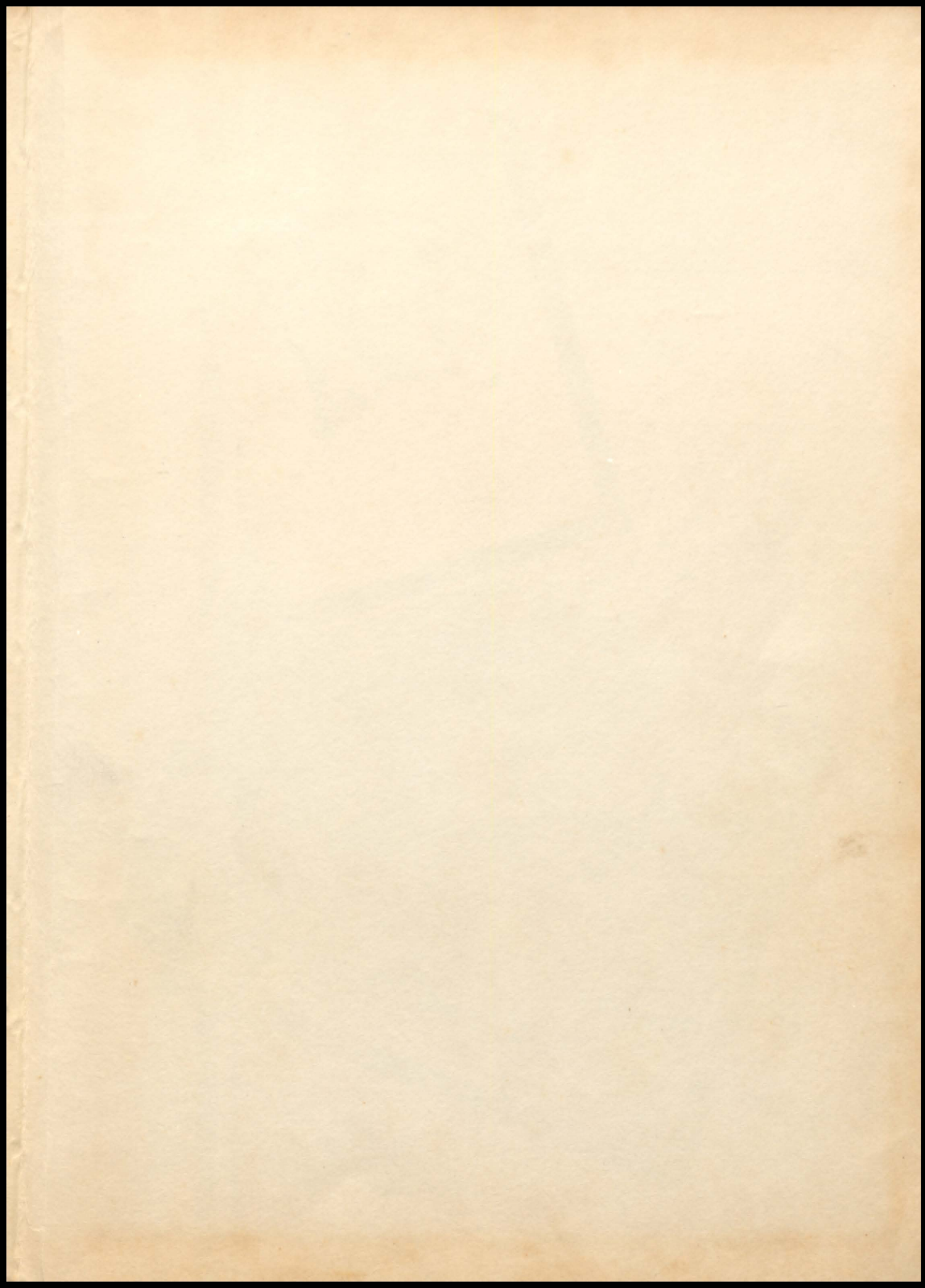
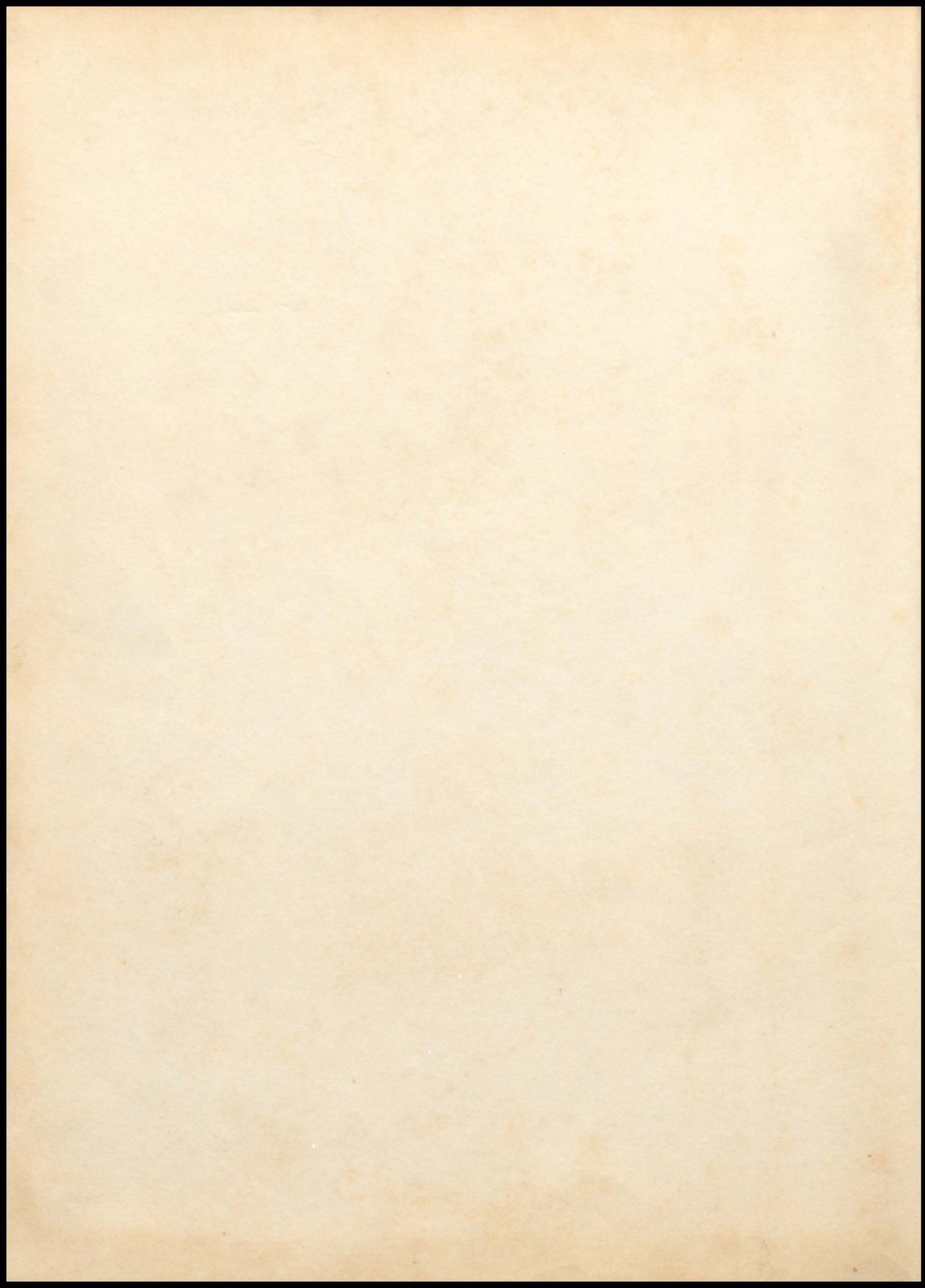


'58 PELMEL

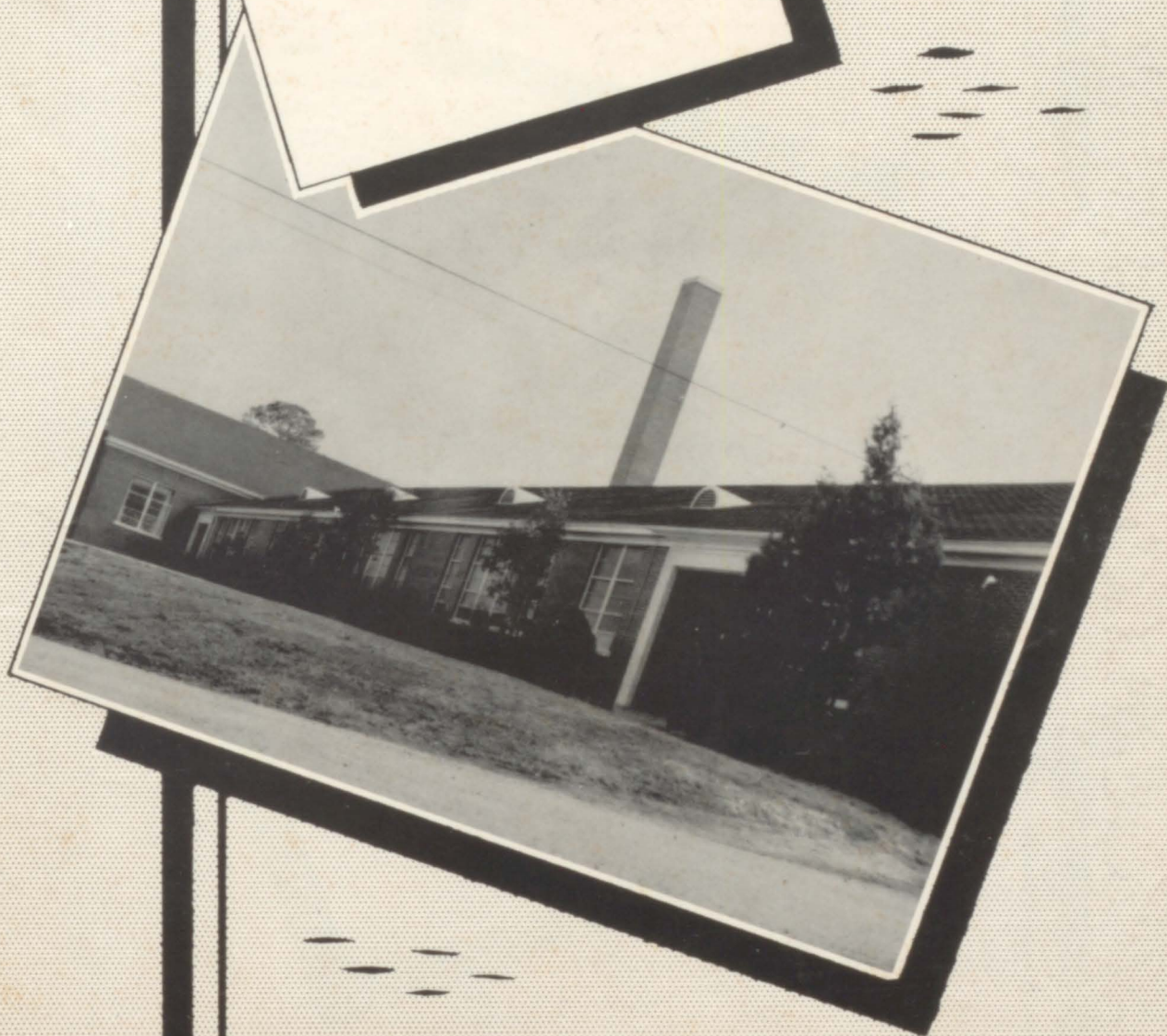








'58 Pelmel



Contents

TITLE PAGE
CONTENTS
FOREWORD
DEDICATION
FACULTY
SENIORS
JUNIORS
SOPHOMORES
JUNIOR HIGH SCHOOL
ORGANIZATIONS
ACTIVITIES
ATHLETICS
ADVERTISING

Foreword

With our school year swiftly closing we pause to catch a final glimpse of the happiness and friends we've had. Many things have happened this year we shall never forget. We find ourselves holding closely to our hearts the fond memories of this past year at P. C. H. S. The 1958 PELMEL is yours. You made it; we preserved it through word and picture.

THE STAFF



Dedication

To a great friend:

You have made our last two years in high school enjoyable and pleasant ones. Through your understanding, we, the Senior Class shall meet the future with innumerable memories of the wonderful times we have had together.

Thank you for devoting your time and unfailing patience to enable us to meet the future with a brighter outlook. We want you to know that you have our respect, admiration, and sincere gratitude.

In dedicating our yearbook to you, we want to say, "Thank You," Mrs. Mewbourne.

THE SENIOR CLASS OF '58



aculty





DR. AUTRY L. BAILEY
Principal
Snead Junior College
Alabama Polytechnic Institute
B. S., M. S.
Teachers College, Columbia
University, Ed. D.

MISS BEATRICE ALEXANDER
History
Howard College, A. B.
University of Alabama



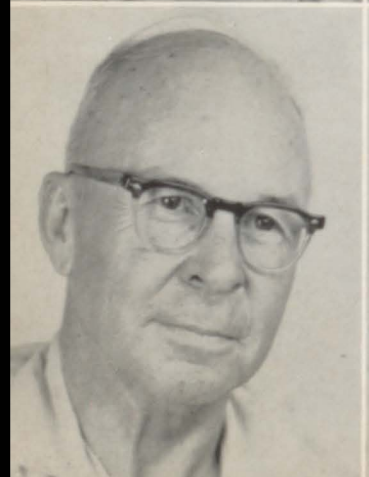
MRS. CORINNE JACKSON
Math
Howard College, A. B.

MR. C. C. LEE
English, Spanish
University of Alabama, A. B.
M. A.



MISS NIOMA LEE
Librarian, English
Alabama College
Howard College, A. B.
University of Alabama, M. A.
Peabody College

MRS. GRACE LOCKE
Home Economics
Alabama College, B. S.
University of Alabama, M. A.



MR. J. W. LOCKE
Vocational Ag.
Mississippi College, B. S.
Alabama Polytechnic Institute,
M. A.

MRS. DOROTHY R. MAYS
Art, History
Birmingham Southern, A. B.
Pratt Institute, Brooklyn, N. Y.

MRS. ROBERT F. MEWBOURNE
English, Annual Advisor
Jacksonville Teachers College,
B. S.
Scarritt, Nashville, M. A.
University of North Carolina



MR. JOE ROBERSON
Assistant Coach, Bookkeep-
ing, History
Howard College, B. S.



MR. JOHN C. SLOVENSKY
Science
Jacksonville Teachers College,
B. S.
Howard College, B. S. in Sec.
Ed.

MRS. ELIZABETH STARNES
English, History
Alabama College, A. B.



MRS. POLLY TURNER
Physical Education, English
Jacksonville Teachers College,
B. S. in Sec. Ed.

MISS ANNIE C. WAITE
Shorthand, Typing, School
Paper Advisor
Alabama College, B. S. in
Sec. Ed.



MR. WILLIAM H. GLOVER
Head Coach, Business Law
University of Mississippi, B. S.

MR. ROBERT WATFORD
Band Director
Jacksonville Teachers College,
B. S. in Music Education
Peabody College



MR. C. C. LEE



DR. A. L. BAILEY



MRS. D. MAYS



MRS. JACKSON



COACH GLOVER and ROBINSON



MRS. STARNES and MRS. ALEXANDER



HIGH OFFICIALS



MRS. ALEXANDER



MR. SLOVENSKY



DR. BAILEY



MRS. WAITE and MRS. JACKSON



MR. C. C. LEE



eniors





Senior Class Officers

Jacky Snow, President, Bobby Burnham, Treasurer, Don Willis, Secretary, Grant Hazelwood, Student Council Representative, Mike Harvey, Vice President.



Senior Class Sponsors

Mrs. R. F. Mewbourne, Mr. C. C. Lee, Miss Annie Carolyn Waite.

JOHNNY ALEXANDER

Letter Club 1, 2, 3, 4, Photo Club 1, Sports 4, Spanish Club 3, 4-H Club 1, PeImel Staff 4, Spotlight Staff 4, Senior Class Who's Who.

JEANETTE ARNOLD

4-H Club, Song Leader 1, Recreational Club 1, 2, Bible Club 2, FHA Song Leader 2, Pep Club 4, Senior Class Who's Who.

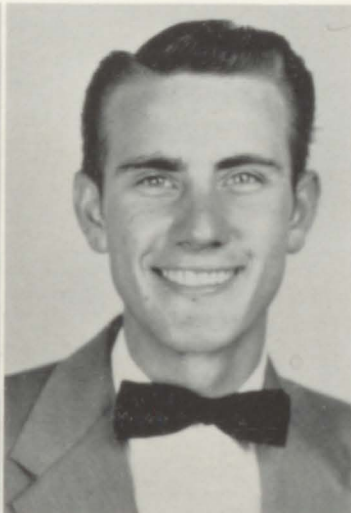


ROBERT BARBER

FFA 2, Glee Club 3, 4, Bus Drivers Club 3, 4, Annual Advertisement Aide 4, Recreation Club 1.

SARAH WYNELL BARBER

4-H Club 1, Recreation Club 1, Dancing Club, Hobby Club, Art Club President 4, Beta Club 3, Secretary 4, Spotlight Staff 4, Pep Club 4, Senior Class Who's Who 4, Student Council 4, FTA Club 4.



ALICE ARMSTRONG BLANKENSHIP

(Little Bit)

Annual Staff 4, 4-H Club 1, Glee Club 2, 3, Band 2, Beta Club 3, 4, FHA 2, Recreational Club 1, Pep Club 4, Dancing Club 2.

JAMES CARL BLANKENSHIP

(Carl)

FFA 2, Glee 2, 3, Bus Drivers Club 3, 4, President Bus Drivers Club 4, Recreational Club 1.

NANCY BLANKENSHIP

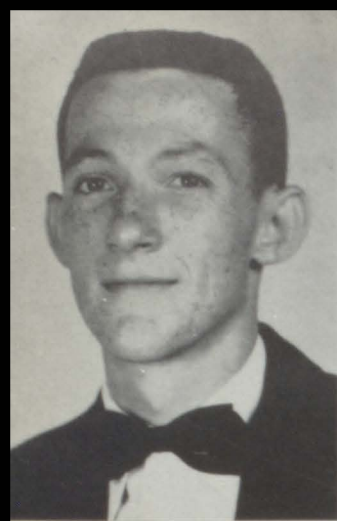
(Nank)

Who's Who 4, 4-H Club 1, Recreational Club 2, Glee Club 3, Banquet Server 2, Band 2, FTA Club 4, Spotlight Staff 4, Pep Club 4, Dancing Club 1, Representative to the Student Council 4, President Spanish Club 4.



LINDA JEAN STEWART BOWMAN

4-H Club 1, FHA Vice President, FHA Historian 2, Annual Staff 4, Glee Club 1, 2, Second Place Winner Miss FHA.



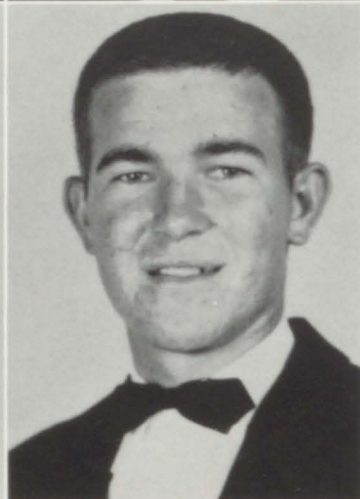
JAMES STERLING BROWN

(Jimmy)

Recreation Club 1, 2; Beta Club 3, 4; Annual Staff 4; Dancing Club 1; Banquet Server 2; Science Club 2; Dramatics Club 4.

JOHNNY BROWN

Withdrawn



PATSY BRYANT CLEMENTS

4-H Club 1; Recreation Club 1; Bible Club 1; Glee Club 2; Band 2; Banquet Server 2; Beta Club 3, 4; Flag Carrier 3; Annual Staff 4.

PAUL BRYANT

Letter Club 2, 3, 4; Art Club 2; Science Club 1; 4-H Club 1, Photography Club 1; Sports Club 3; Football Club 2, 3, 4.

BOBBY BURNHAM

Student Council 1, 2, 3, 4; Spotlight Staff 3, 4; Basketball 1, 2; Bus Driver 4; Beta Club 3, 4; Who's Who 4; Annual Staff 4; Glee Club; Banquet Server 2; President Freshman Class; Treasurer Senior Class.

CATHERINE CARDEN

4-H Club 1; Recreation Club 3; Pep Club 4; Glee Club 3.

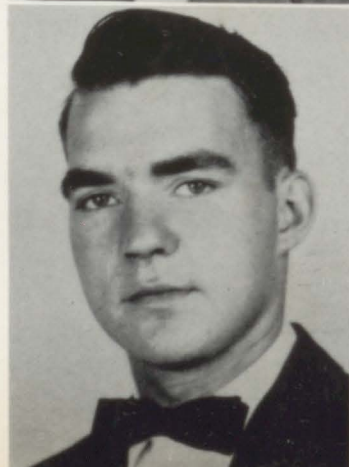


WAYMAN CARLISLE

FFA 3, 4; FTA 3, 4; Bus Driver Club 3, 4; Band 3, 4, Drum Major 4.

BRENDA COLLETT

Dancing Club 1; 4-H Club 1; Recreation Club 1, 2, 3; Pep Club 4.



JOSEPHINE CRUMP

4-H Club 1, Recreational Club 1, Bible Club 2, FHA 2, Pep Club 4.

PAUL DAVIS

Art Club 3, 4, Sports Club 3, Letter Club 3, 4, Skull Club 1.

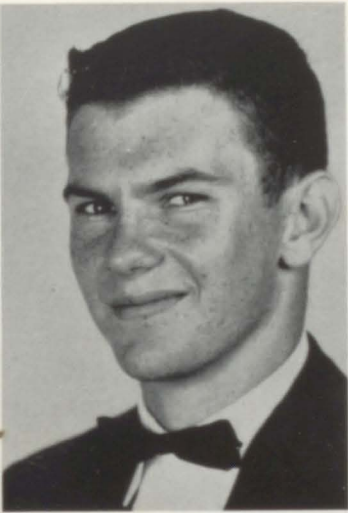


NORMA DAY

4-H Club 1, FHA 2, 3, Glee Club 2, Pep Club 4.

EVERETT DILL

Sports Club 3, FFA 3, 4, Bus Drivers Club 3, 4, President Skull Club 1, Who's Who.



DICKEY ELY

Science Club 1, Athletic Club 2, Library Club 4, 4-H Club 1, Art Club 2, Dancing Club 2, Pel Mel Staff 4, Server Junior-Senior Banquet, Who's Who.

BOBBY FLEMINGS

Letter Club 1, 2, 3, 4, Basketball 1, 2, 3, Who's Who.



MARGARET GARRISON

4-H, Dancing Club 2, FTA 2, 3, 4, Spanish Club 2, Glee Club 3, Library Club 3, 4, Beta Club 3, 4, Annual Staff 4, Pep Club 4, Who's Who 4.

GALE GEORGE

Beta Club 3, 4, Dancing Club 1, 4-H 1, Library Club 3, 4, FTA 4, Recreation Club 2, Who's Who 4, Annual Staff 4, Pep Club 4, "B" Honor Roll 1, Dramatics Club 4.



NANCY REGINA GOODGAME

(Jean)

Recreation Club 2, 4-H Club 1, Band 2, 3, Glee Club 2, Dancing Club 1, Banquet Server 2, Annual Staff 4, FTA 4, Pep Club 4.

LELWIN GORE

Letter Club 3, 4, Sport Club 3, FFA 3, 4, Skull Club 2, Art Club 3, 4.



PAT GRAVETTE

Beta Club, Art Club 1, 2, "Tatler", Spotlight 1, 2, 3, Who's Who, Recreation Club, Glee Club.

PATRICIA ANN HALL

(Pat)

FHA 2, 3, Song Leader 3, 4-H Club, Recreation Club 1, 2, 3, Pep Club 4.

GERALD HARDWICK

Letter Club 4, Football 4, 4-H Club, Basketball 3, Outstanding Lineman 3, 4, Spanish Club, Server Junior-Senior Banquet.

RACHEL HARDWICK

4-H Club, Recreation Club, Glee Club, FHA Chapter President, Vice President, FTA, Band 2, Spotlight Staff, Band Reporter, Beta Club 3, 4, Banquet Server, Art Club, Annual Aides, Pep Club, Who's Who.

SAM HARMON

Glee Club, FTA Club, Beta Club 3, 4, Spotlight Staff, Who's Who, Band.

LINDA HARRIS

Recreation Club 1, Dancing Club 2, 4-H Club 1, Banquet Server 2, Glee Club 1, Annual Staff 4, Pep Club 4.



MIKE HARVEY

Captain Football Team 4; Letter Club 1, 2, 3, 4; Basketball 2; Junior Class President; Senior Class Vice President; Spotlight Staff 1, 2, 3; Annual Subscription Manager; Head Waiter Junior-Senior Banquet; Student Council 2, 3, 4; MC Junior-Senior Banquet; Senior Class Who's Who; Glee Club 1, 2; Recreation Club 1, 2; Science Club 2.

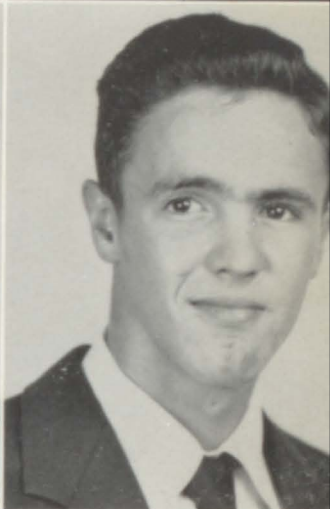
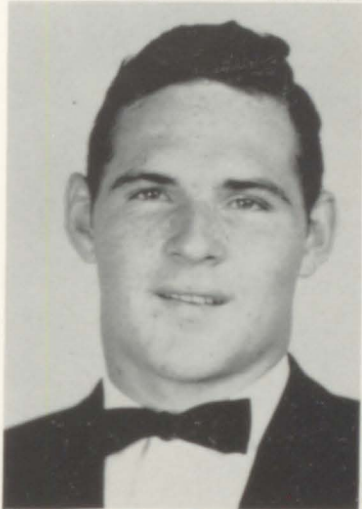


LINDA HAYNES

Withdrawn

GRANT HAZELWOOD

Who's Who; Banquet Server; Letter Club 3, 4; Spanish Club 3; Co-Captain Football Team 4; Representative Student Council 4; Annual Staff 4; Dancing Club 1.



REGGIE HAZELWOOD

Recreation Club 1; Sports Club 1; Letter Club 2; Sports Club 2; FFA 2, 3; Spanish Club 4.

THURMAN HENNINGER

Beta Club 3, 4; Letter Club 1, 2, 3, 4; Recreation Club 1; Baseball 3, 4; Glee Club 2; Secretary of Sophomore Class 2; Vice President Student Council 3, President of Student Council 4; Copy Editor of Annual 4; Banquet Server 2; 4-H Club 1; Dramatics Club 4; Senior Class Who's Who 4; Committee Chairman Junior-Senior Banquet 3; Football 1, 2, 3, 4.

BETTY JEAN HERREN

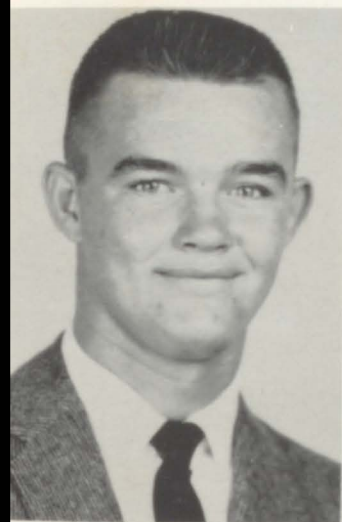
FHA 2; Pep Club 4; Annual Staff 4; Banquet Server 2; Friendliest Who's Who 4; Recreation Club 2, 3.

SARA LOU HILL

Recreation Club 1; Dancing Club 2; 4-H Club 1; Banquet Server 2; Glee Club 1; Annual Staff 4; Pep Club 4.

BETTY HOLLIS

FHA, Miss FHA; Spanish Club; Dancing Club; Glee Club; Pep Club; Art Club; Banquet Server.





ADELINE TRUE HOPE

Woodmen of the World Award in American History (Calera High School); Annual Staff 4; Spotlight Staff 4; Beta Club 4; Pep Club Reporter 4; Dramatics Club 4.

GLADYS JACKSON

4-H Club 1; Recreation Club 1; Bible Club 2; FHA 2.



SANDRA JOHNSON

Recreation Club 2; Banquet Server 2; Cheerleader 4; Spanish Club 3; Glee Club 3; Art Club 4; Spotlight Staff 2; Beta Club 3, 4; Annual Staff 4; "Miss Pell Hi" 57-58; Who's Who 4.

JOLLIE SUE KIDD

Annual Aid 4; Spotlight Staff 3; 4-H Club 1; Majorette 3; Banquet Server 2; Who's Who 4; Beta Club 3, 4; Art Club 4; Pep Club 4.

KENNY KING

(Bo-Bo)

Vice President Junior Class 3; Beta Club 3, 4; Banquet Server 2; Who's Who 4; Science Club 2; Recreation Club 1; Spotlight Staff 4; "B" Honor Roll.

DALE LEE

Beta Club 3, 4; Dramatics Club 4; Banquet Server 2; Recreation Club 1, 2; Annual Staff 4; Spotlight Staff 2, 3; Senior Class Who's Who.

DOROTHY M. LEE

(Dot)

Recreation Club 1, 2; FHA 2, 3; Dancing Club 1.

FRANCES McCONATHA

Annual Aid 4; Citizenship Club 1; Science Club 2; Banquet Server 2; Glee Club 1, 3; Pep Club 1, 4; (Transfer from Gorgas High School).

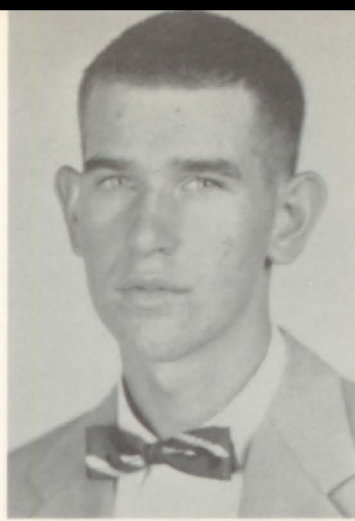


JERRY MORROW

FFA 2,3,4; 4-H Club 1; Dancing Club 2.

GAIL MERRYMAN

4-H Club 1; Art Club 2; FHA 2; Glee Club 1, 2; Recreation Club 1, 2, 3; Spanish Club 3; Science Club 2; Banquet Server 2; Pep Club 4.



FRANCES LEE MULVEHILL

(Tut)

Spotlight Staff 1, 2, 3, 4; Art Club 3; Student Council Rep. 3; Glee Club 1, 2; Cheerleader 3; Head Waitress Junior-Senior Banquet; Spanish Club Treasurer 3; Beta Club 3; Who's Who 4; Annual Staff 4; Band 1.

BILLY RAY MOSS

FFA 2, 3, 4; Science Club 2.



BILLY NEWTON

4-H Club 1; Recreation Club 1; FFA 2, 3, 4; Bus Drivers Club 3.

FAYE PARKER

4-H Club 1; FHA 3; Recreation Club 2.



JIMMY PARTRIDGE

FFA 2; Bus Drivers Club 4.

LAURA PATTERSON

Pep Club 4; Art Club 4; Recreation Club 2, 3; 4-H Club 1; Bible Club 2.



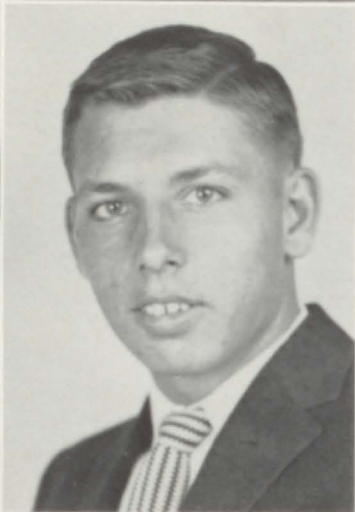
TEDDY PATTERSON

(Ted)

Football 1, 2, 3, 4; Letter Club 1, 2, 3, 4; Beta Club 3, 4, Vice President Beta Club 4; Who's Who 4; Annual Staff 4; Basketball 2; Banquet Server 2; Recreation Club 2; 4-H Club 1; Dancing Club 2.

GLADYS PEAVY

FHA 2; Spotlight Staff 2; Recreation Club 2; Glee Club 2.



PATRICIA PEOPLES

Withdrawn

ELLIS PERRIN

Letter Club 2, 3, 4; Sports Club 2, 3; FFA 3; Photography Club 2; Recreation Club 2; Art Club 3, 4.

MARIE GOODWIN PERRY

Recreation Club 1; 4-H Club 1; Bible Club 1; Glee Club 2; FHA 2, 3; Annual Staff 4.

NELDA PHILLIPS

4-H Club 1; Recreation Club 1; Glee Club 2, 3; Banquet Server 2.



WILLIAM LEE PHILLIPS, JR.

(Bill)

Football 1, 2, 3, 4; Letter Club 1, 2, 3, 4; Art Club 3, 4; Beta Club 3, President Beta Club 4; Annual Staff 4; Student Council 3, 4; Who's Who 4; Banquet Server 2; Recreation Club 1.

LELAN PUTNAM

Science Club 2; Art Club 3; Beta Club 3, 4; Bus Drivers Club 4; Annual Staff 4.



PAT REECE

4-H Club 1, Recreational Club 2, Dancing Club 2, Glee Club 3, FTA 3, 4, Banquet Server 2, Managing Editor, Spotlight Staff 4, Art Club 4.

LONNIE JEAN RICH

(Jean)

Majorette 4, Band 3, Beta Club 3, 4, FHA Secretary 3, Annual Aide 4, FTA 3, 4, 4-H Club 1, Bible Club 2, Dancing Club 2.

HOWARD RICHARDSON

(Hap)

Basketball 2, 3, FFA 2, 3, 4, FFA Secretary, Photography 2, Art Club.

SHAUGHNEEN VAN RILEY

Recreation Club 1, Dancing Club 2, Glee Club 1, 2, 4-H Club 1, Library Club 1, 2, Spanish Club 3, Pep Club 4, Pep Club President 4, Who's Who 4, Spotlight Staff 3, 4, FTA 4, Student Council 4.



JIMMY ROBERTS

(Bear)

FFA 2, Dancing Club 1, Letter Club 2, 3, 4, Photography 2, Sports Club 3, Art Club 2.

JANE ROBERTSON

FHA 2, Bible Club 2, Recreation Club 2, Pep Club 4, Glee Club 1.



W. C. ROE

FFA 2, 3, 4, Bus Drivers' Club 3, Photography Club 2, 4-H Club 1, Dramatics Club 4.

FAYE ROOKER

(Rook)

Pelmel editor 4, Cheerleader 3, 4, Beta Club treasurer 4, Beta Club 3, 4, Spotlight Staff 2, 3, Dancing Club 1, 2, Junior - Senior Banquet committee chairman 3, Junior - Senior Banquet waitress 2, FTA 4, Letter Club 3, 4, Who's Who 4, Glee Club, Dramatics Club 4, Tatler 3, Student Council 1, 2, 4.

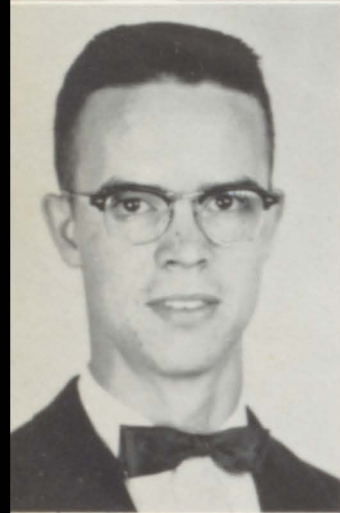


JIMMY SIMPKINS

FFA 2, 3; Dramatics Club 4; Banquet Server 2; FFA Quartet 2, 3; Art Club 1; Dancing Club 1, 2; Photographer Club 2; Band 2; 4-H Club 1, 2.

BARBARA SMITH

Bible Club 2; Recreation Club 2; Pep Club 4.



JACKY LANE SNOW

Vice President of Freshman Class 1; Treasurer Sophomore Class 2; Beta Club 3, 4; Student Council 3, 4, Treasurer Student Council 3; Bus Drivers Club 4; Business Manager for Pel Mel 4; President Senior Class 4; Banquet Server 2; Science Club 3; Spanish Club 3; Dramatics Club 4; Dancing Club 2.

JACKY STEWART

Letter Club; Football 1, 2, 4; Recreation Club 2; Photographer Club; 4-H Club.

SLONA STEWART

FTA Treasurer 3, Vice President 3; Server Junior-Senior Banquet 2; FHA 1; Majorette 3; Dancing Club 1; Glee Club 1, 2; Band 2, 3; Pep Club 4; Co-Editor Spotlight 4.

BARBARA VINES

Spotlight Editor 4; Student Council 4; 4-H Club 1; Beta Club 3, 4; Recreation Club 1, 2; Who's Who 4; Pep Club 4; Dramatics Club 4; 1st Place County Oratorical Winner 1, 2nd Place District Oratorical Winner 2; Glee Club 3.



LAMAR WALKER

Photography Club 2; FFA 2; 4-H Club 1; Art Club 3.

ROBERT WALLIS

FFA 3, 4; Bus Drivers Club.



DONALD GENE WILLIS

(Don)

Letter Club 2, 3, Art Club 3, Photography Club 2, Sports Club 3, FFA 2.

HAROLD DEAN WILLINGHAM

(Shug)

FFA Club 2, 3, Photography Club 2, Dancing Club 1, Bus Drivers' Club 3, 4, Letter Club 2, Sports Club 3, Senior Class Who's Who.



DWIGHT WILLIAMS

Recreation Club 3, Photography Club 2, Spanish Club 3.

BETTY WILLIAMS

4-H Club Song Leader 1, Recreational Club 2, FHA Song Leader 2, Bible Club 2, Pep Club 4.



FRANK WHITTEN

(Buddy)

Beta Club 3, 4, Dancing Club 2, Spotlight Staff 4, Senior Class Who's Who.

ROSEMARY EDMONDSON WHITE

(Rosie)

Spotlight Staff 4, Beta Club 3, 4, Banquet Server 2, Art Club 2, 3, 4, Recreational Club 1, Student Council 2, Glee Club 1, Library Club 1, 2, Sophomore Class President, Junior Class Secretary, Senior Class Who's Who.

ROSA ANN WHEELER

(Chee)

4-H Club 1, Recreation Club 2, Dancing Club 1, Glee Club 2, Banquet Server 2, FTA Club 3, 4, Beta Club 3, 4, Co-Editor Annual 4, Who's Who 4, Pep Club 4.

JACK WEAVER

Photography Club 3, 4-H Club 1, Spanish Club 4, Recreational Club 2.





S. R.

Jack

Johnny

Nelda

Margaret

Jane

Mike & Kenny

True

Rosemary

Jean

Leland

Linda

Alice

Bobby

Jimmy

Jack

Dale

Faye

Pat

Nancy

Rosa

Slona

Frances

Frances

Joseph

Rachel

Betty

Jollie

Buddy

Thurman

Barber

ail

Gladys

Jeanette

Petsy

Sara

Jean

Erenda

Grant

Teddy

Barbara

Katherine

Don

Lelwin

Bill

Wynell & Robert

Dot

Wynell

Carl

Marie

Linda

Betty & Norma

Jimmy

Paul

Pat

Linda

Jimmy

Faye



uníors





Junior Class Officers

FRANK FINCH - - - - - President
 CAROL PEMBERTON - - - - - Secretary
 PATRICIA BLANKENSHIP
 LINDA POLK

ROBERT LAYTON - - - - - Representative
 BARBARA BROWN
 CARLY JO GREEN - - - - - Vice President
 JACK BARBER - - - - - Treasurer



EDWIN ADAMS
 PAT BLANKENSHIP



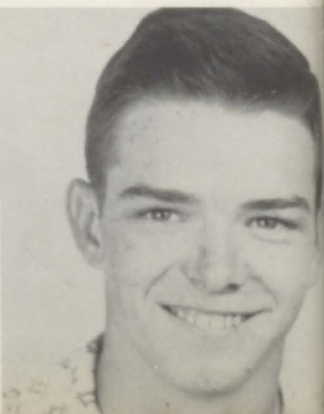
JACK BARBER
 HOWARD BREWSTER



JERRY BELL
 BARBARA BROWN



MARY BICE
 J. W. CARREKER



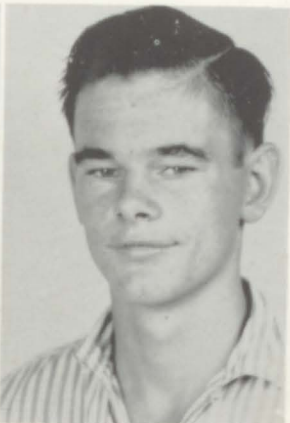
MARY CARROLL
FRANK CASON



BILLY CASTLEBERRY
STEVE CHAMBERS



HENRY CLAPPER
LEON CLEMENTS

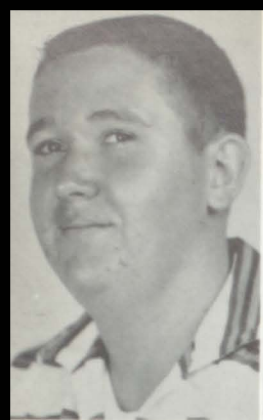


MARY CLEMENTS
JIMMY COLE



LINDA COSHATT
BONNIE DAVIS





TOMMY DAVIS
JOE DOBY



FRANK FINCH
JERRY FOWLER

PATSY FUNDERBURG
BRENDA GALLUPS



JOE GOLDEN
BERNICE GOODGAME



J. N. GOSS
FATE GOSSETT



BARBARA GRAHAM
VIRGIE GRAVES



KATIE ANN GRAY
CARLY JO GREEN



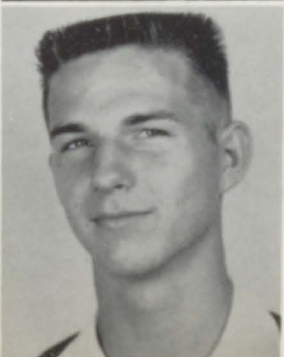
BILLY GRIFFITT
MARTHA HAISTINGS

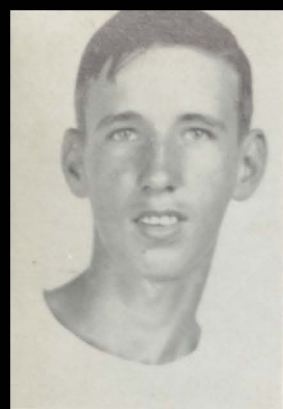


WILLIE HALLMAN
ELISSA HAMILTON



PATRICIA HAMILTON
LUDFORD HARMON





BUD HAYNES
JOHN HENNINGER



CAROLYN HESTERLY
DIMPLES HOWARD

HELEN HOWARD
JANICE ISBELL



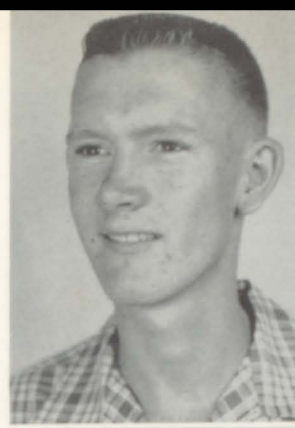
JUANITA JACKSON
SHERBIE JACKSON



JUANITA JOHNSON
SYLVIA LAMBERT



ROBERT LAYTON
CLAUDE LEE



DOROTHY LEE
GORDON LEE



JERRY LEE
RUDOLPH LEE



BARBARA LEWIS
JAMES LONG



RODNEY LOVE
JOHN LUKER



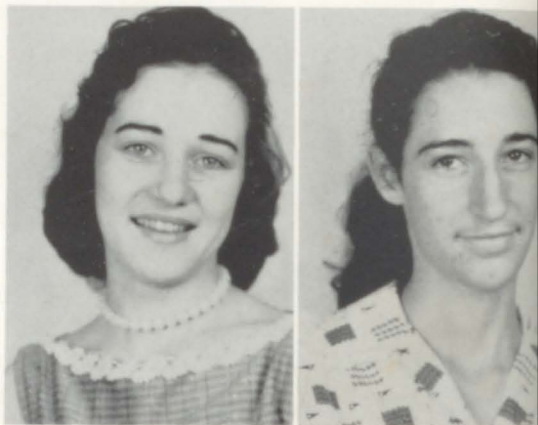


JOHNNY LUKER
TOMMY LUKER



BETTY MACON
DEAN MACON

MARTHA MANNING
PEGGY MASTERS



NANCY MERRILL
CAROLE PEMBERTON



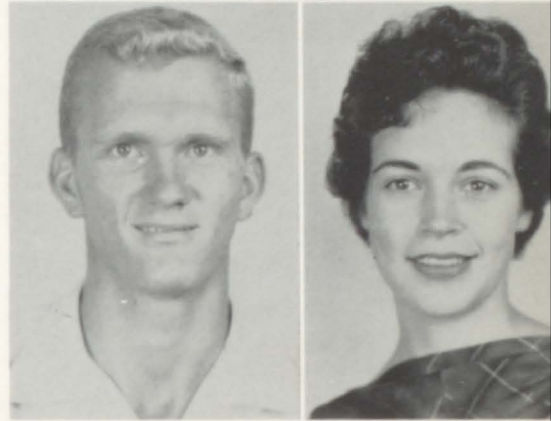
LINDA POLK
FAYE RICH



FAYE RICHARDSON
CAROL SUE ROBERTS



ROY ROE
ELAINE SAVAGE



BOBBY SHELL
BILLY SIMS

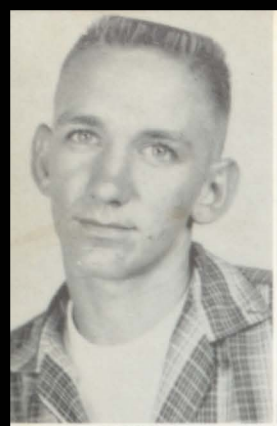


JERRY SIMS
SANDRA SIMS



BOBBIE LEE SMITH
KAY SMITH





JOTT SMITH
SUE SMITH



KAREN SPRADLEY
RONALD STEVENS

SANDRA STEVENS
CHARLES STEWART



JUDY SUMNER
SANDRA TAYLOR



PAT THOMAS
JOHN THRASHER



POLLY TIMS
PEGGY TURNER



SUE WALKER
RITA WARD



JOHNNY YOUNG
FAYE NELL WRIGHT



ALMA MATER

On the city's
Western border,
Straight against the sky,
Proudly stands
Our ALMA MATER
As the years go by.

Forward, ever,
Be our watchword,
Conquer and prevail,
Hail to thee,
Our ALMA MATER
P. C. H., ALL HAIL!



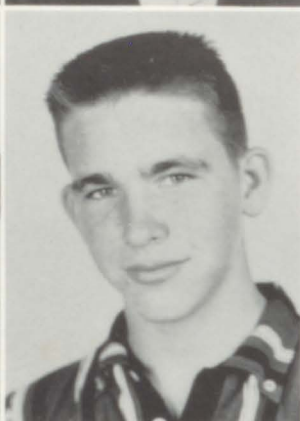


sophomores





Mack Abercrombie
 Joe Lynn Adams
 Danny Alverson



Shirley Adams
 Bob Bain
 Janice Baker



Bobby Barber
 Jane Barber
 Sarah Bice



Jerry Bowman
 Laura Bowman
 Marie Bowman



Barbara Ann Brown
 Barbara Jo Brown
 Fred Bunn

Ronald Burnham
Francell Callahan
Bertha Carden



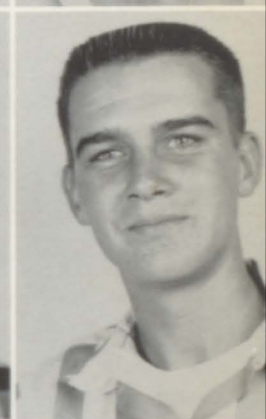
Frances Castleberry
Wayne Cates
Sue Clinkscales



Sue Crowley
Jane Deason
Jane Dorrough



Foster Drummonds
Judy Drummonds
Bobby Eades



Bernice Foster
Frankie Foster
Ruth Frazer

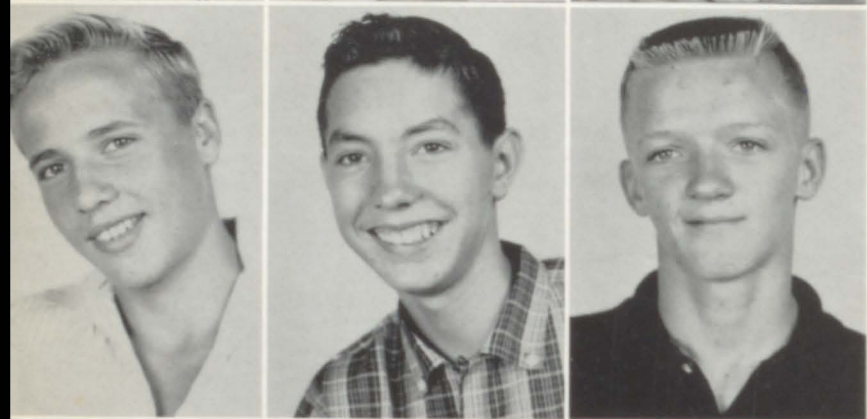




Wayne Funderburg
Tim Gallups
Tommy Gann



Linda Graham
Peggy Green
Kay Goodgame



Teddy Hall
Jerry Holladay
Elmer Harmon



Teddy Harris
Robert Harrison
Dorothy Haynes



Larry Haynes
Earl Hazelwood
Nancy Henninger

Peggy Higginbotham
Joan Hollis
Wayne Hollis



Sandra Hope
Sinda Howard
Joy Ingram



Claudine Isabell
Carolyn Jones
Sara Jones



Wayne Kendricks
Douglas Lawrence
Virginia Lee

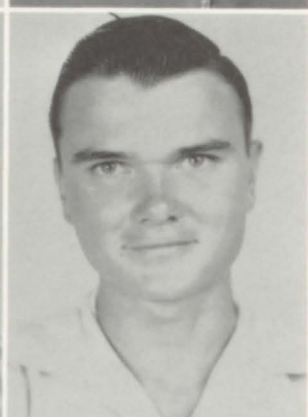


Shortie Long
Jean Lonnergan
John L. Lonnergan Jr.





Carol Lovell
Wanda Lovell
Mary Ann Lowery



Derrol Luker
Wilma Manning
Benny Mathis



Joe McKee
Adonis Milam
Sue Miller



Ernest Mitchell
Gloria Morris
Thalia Jo Morrow



Pat Mulvehill
Roger Newton
Ann Pardue

Billy Parker
Susie Patterson
Johnnie Perkins



Helen Perry
Myrna O. Phillips
Blair Pike



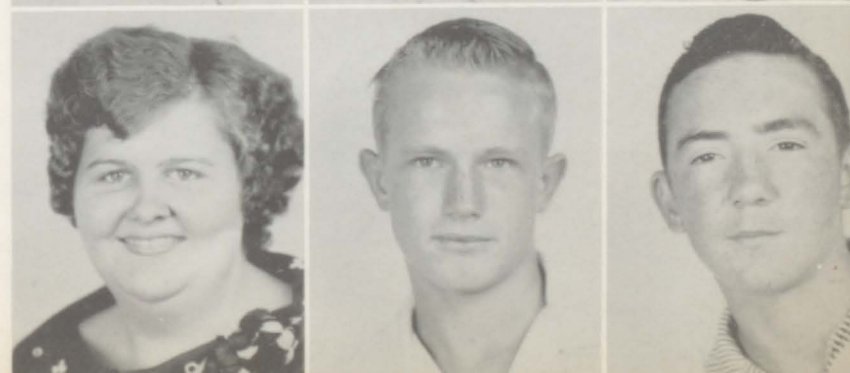
Don Polk
Larry Powell
Larry Presley

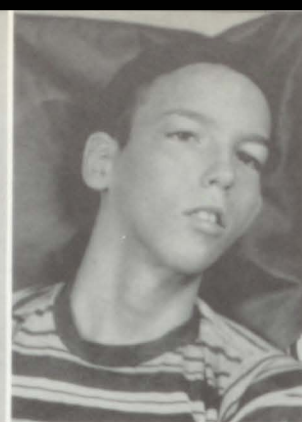
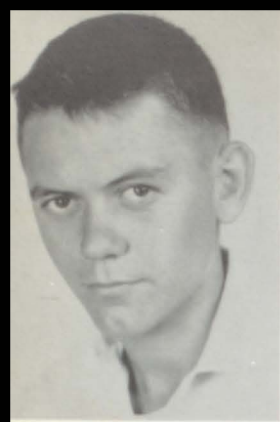


Sonny Prickett
Faye Ramsey
Earl Rich



Norma Jean Rich
Sammy Rich
Mike Reece





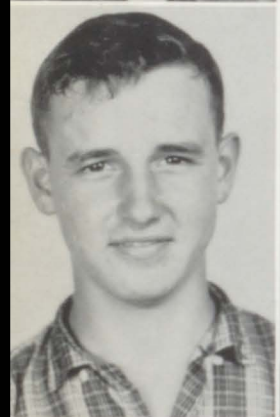
Richard Robertson
James Sargent
Larry Scott



Brenda Selby
Judy Sisson
Sandra Skelton



Joe Smith
Mickey Smith
Rosalyn Speer



Charles Staples
Betty Lou Stevens
Dennis Sweatt



Raymond Sweatt
Ann Sweeney
Sandra Terrell

Henry Thompson
Jennie Thompson
Johnny Threadgill



Mary Tipton
Harry Tucker
Larry Tucker



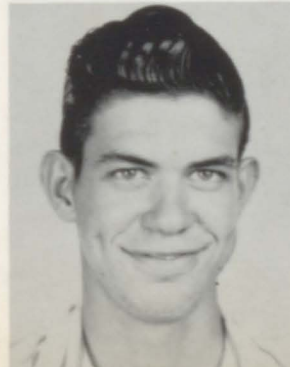
Dwight Turner
Mary Turner
Sarah Tuttle



Billy Vaughan
Bob Wadsworth
Barbara Walker



Benny Walker
Jerry Walker
Martha Walker





Joan Wallis
 Mary Wattlington
 Joe Wheeler



Jeanette Williams
 Margaret Williamson
 Patsy Williams



Sam Willis
 Carolyn Wright
 Littleton Yarbough



Sophomore Class
Officers

DERROL LUKER
 Treasurer
 JOAN HOLLIS
 Secretary
 BUTCH LONNERGAN
 President
 SANDRA TERREL
 Rep. to the Student
 Council
 PAT MULVEHILL
 Vice President



unior hí.





O. D. DURAN
Principal



LESTER BYRANT
Math



FRANCES COLEMAN
Social Studies



GLADYS HARDWICK
English



BILL HOWELL
Science



MARGARET MONGOLD
English



RUTH OLIVER
Science



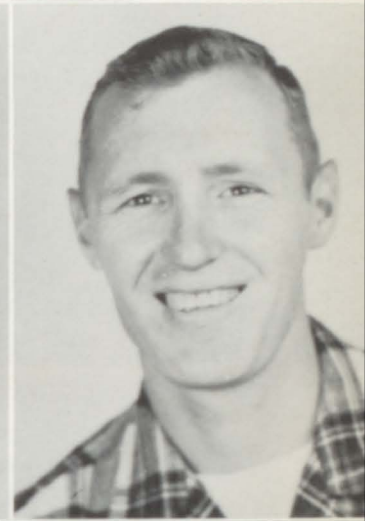
MYRTLE PERRY
Social Studies

JENNIE MAE REECE
Math



MAMIE WALKER
Social Studies

MARTHA WEEKS
Math



HUGH H. WILLIAMSON
Science

JUNIOR HIGH STUDENT COUNCIL



*Seventh, Eighth, Ninth Grade
Class Officers*





Carol Ann Adkins
Carol Ann Allred
Phillip Alverson
Billy Ayres ✓



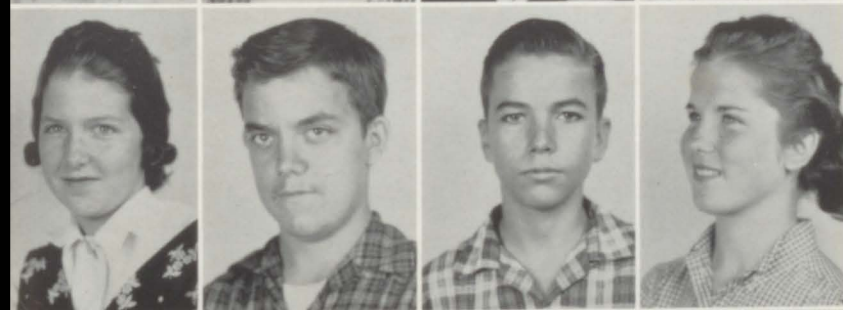
Kent Beavers
Janice Bice
Lilian Bice
Jeanette Bowman



Joe Bowman ✓
Shirley Bowman ✓
Eddie Bowman ✓
Teddy Brown



Sarah Bryant ✓
Jane Calahan ✓
Herbert Carreker
Jane Chapman

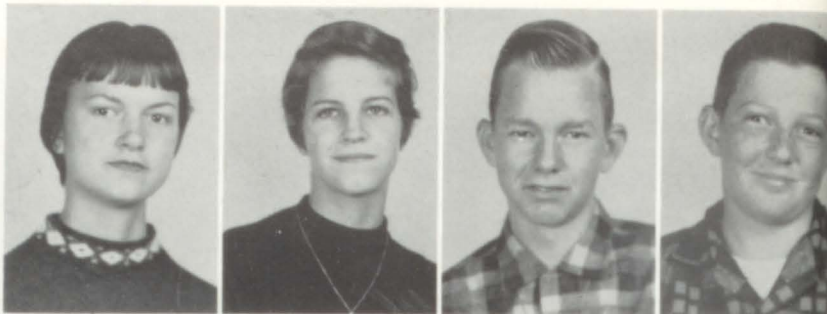


Kay Chapman
Willian Chapman
Jerry Clements
Beth Coleman



Luvainia Coleman ✓
Charlotte Collett ✓
Melba Cornett ✓
Carolyn Cosper ✓

Carolyn Crump
 Shirley Drummonds
 Terry Douglas
 Jimmy Duran



Carolyn Endfinger
 Janice Endfinger
 Howard Evans
 Teddy Fambro



Jeanette Fowler
 Wayne Gallegly
 Mary Sue Gambrell
 Sadie Lee Garner



Faye George
 Carol Gillham
 Mike Glenn
 Terry Glidewell



Larry Golden
 Onzell Goodgame
 Billy Gossett
 James Graham



Martha Graham
 Raymond Graham
 Linda Gurly
 Ann Hancock





Frankie Hannah
Joe Hardman
Kay Hardwick
Terry Hardwick



Sara Nell Hare
Carol Haynes ✓
Doris Haynes
Linda Henninger ✓



Judy Gail Hodges
Rodney Hollis
Wayne Howard
Virginia Isbell



Jo Ann James ✓
Wayen Johnson ✓
Wayne Johnson ✓
Barbara Jones



Brenda Jones
Charlotte Jones ✓
Margie Jones
Gary Kendrick ✓



Sonny Kilgroe ✓
Elaine Kimberly
Nancy Kincaid ✓
Millie Ann Lawley ✓

Claude Ledbetter
Ronney Ledlow
Laurel Ann Litty
Nima Lonergan



Penny Lonergan
Linda Love
Gene Lovell
Sandra Lovell



Tom Lovell
Sara Manning
Johnny Maske
Joel Masters



Dotty Mays
Judy McCullough
Joyce Moore
Larry Morrow



Shirley Pardue
Wilda Jo Patterson
Ellen Peoples
Kenneth Perkins



Tommy Perkins
Newton Perry
Brenda Phillips
Gary Pilgreen





Agnes Pope ✓
Joann Powell
Ronny Presley
George Ramsey



Benny Rich ✓
Carolyn Rich ✓
Nelda Richey
Carolyn Robertson ✓



Jackie Roe
Judy Roe
Edward Rush ✓
Peggy Sims ✓



Frankie Simmons
Pricilla Simpkins
Virginia Simpkins ✓
Charles Smith



Linda Smith
Robert Smith
Violet Smith
Freddy Snow



Arthur Spicer
Brownie Spruiell
Amanda Stevens
Joyce Stevens

Rayburn Stokes
 Robert Strickland
 ✓ Mary Lou Summer
 Jimmy Doyle Taylor



Marvin Taylor
 Charlotte Thrasher
 Larry Tillery
 ✓ Ruth Tipton



Clyde Tollison
 Judy Tomlin
 Larry Tucker
 ✓ Peggy Jean Tucker



Jack Turner
 Kathy Turner
 ✓ Calvin Underwood
 Charles Underwood



✓ Oscar Underwood
 Joy Vickery
 Barbara Wadsworth
 ✓ Joe Warren



Wanda Ware
 James Watson
 ✓ Douglas Wells
 Julie Wells



Janice Williams
Faye Willis
William Windsor
Bobby Wright



Jimmy Wright
Kenneth Youngblood



Junior High "B" Team



Eighth Grade

Carol Albright
Mary Lee Bain
Albert Ray Ball
Judy Bannister
Richard Barber



Gerry Beavers
Judy Bowlin
Annette Bowman
Donald Bowman
Grace Brenneman



Robert Butterworth
Mickey Burgin
Blair Bynum
Ruby Clarke
Barbara Calhoun



Joann Callahan
Sally Champion
Johnnie Cornett
Nancy Cornett
Lavell Dill



Jerry Dill
Mable Endfinger
Jimmy Ensley
Doshie Ensley
Kenneth Epperson



Linda Fincher
Edgar Ford
Charles Foster
Ronnie Foster
Jimmy Fowler



Teddy Gallegly
 Bobbie Goodwin
 Alfred Gossett
 Linda Gravett
 Willard Guy



Earl Ray Hallman
 Dixie Hamil
 Karen Hamilton
 Richard Hargrove
 Harvey Hayes



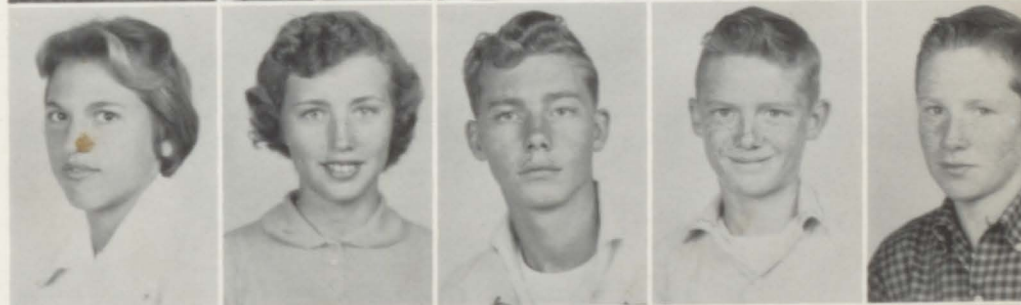
Linda Haynes
 Carole Hershey
 Nancy Holliday
 Jimmy Hollis
 Bobby Hollis



Jimmy Howard
 J. T. Howard
 Julian Hunter
 Mildred Hurst
 Doris Isbell



Ora Lou Jackson
 Addis Jones
 Houston Kimberly
 Albert Ray Kimberly
 Rodney Lambert



Ruth Ledbetter
 Mike Lee
 Richard Love
 Shirley Martin
 Billy Meeks



James Meeks
 Glenn Milian
 Fred Ray Mullins
 Shirley F. McDaniel
 Barbara McNabb



James Ogle
 Kenneth Patterson
 Pamela Payne
 Mae Peoples
 Patricia Phillips



Brenda Polk
 Janice Prather
 Jane Rich
 Kenneth Rickles
 Ila F. Roberts



Freddy Robertson
 Margaret Rush
 Shirley R. Rust
 Ulennis Rowe
 Terry Rowe



Lawana Sargent
 Barbara Scoggins
 Mary Ann Scott
 Lillie Mae Smith
 Hoyt Ann Stewart



Mollie Tollinson
 Jerry Tucker
 Katy Turner
 Peggy Jean Vickery
 Patsy Walker



Eugene Watson
Nancy Carol Wilcox
Terry White
Gaynell Yarbrough



Ground Observers Corp.
4-H Club Officers
(Eighth Grade)



Spotlight Aides
4-H Club Officers
(Ninth Grade)



Seventh Grade

Verlon Agan
 Judy Alexander
 Gaile Alldredge
 Ann Alldredge
 Gertrude Bailey



Kay Bain
 Doris Ball
 Roddy Barber
 Elaine Barber
 Ronald Barnette



Jimmy Bell
 Lee Bell, Jr.
 Paulette Bowman
 Charles Bowman
 Edward Bowman



Barbara Brock
 Dinah Brown
 Bobby Jean Brown
 Teddy Wayne Brown
 James Bullard



Earl Burgin
 Frankie Campbell
 Elsie Carlisle
 Edna Causey
 Brenda Clapper



Allen Clapper
 Albert Cleveland
 Marsha Cook
 Michael Cooper
 Wayne Cosper



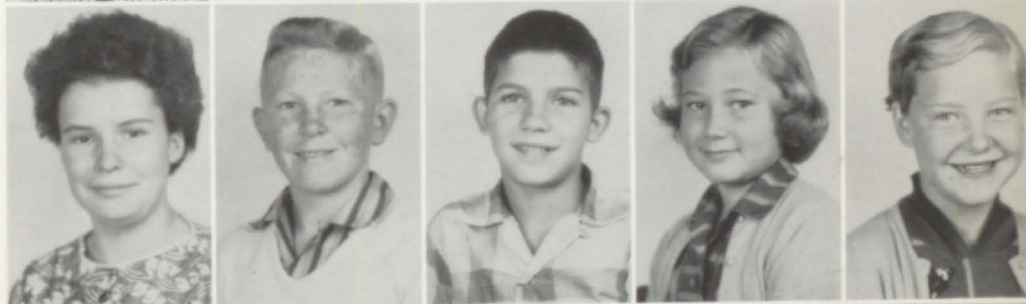
Johnnie Davis
 Vickie Dorough
 William Dill
 Charles Ford
 Robert Foster, Jr.



Jerold Fowler
 Wilda Rae Franklin
 Carolyn Funderburg
 Miriam Funderburg
 Judy Gann



Evelyn Gann
 Jackie Gant
 David Glidewell
 Judith Goodgame
 Margaret Gray



Jimmy Gortney
 Laura Mae Gossett
 Neice Graham
 Jim Gray
 Joan Green



Johnnie Guthrie
 Jimmy Hagadorn
 Barbara Kay Hall
 Marvin Dean Hall
 George Hannah



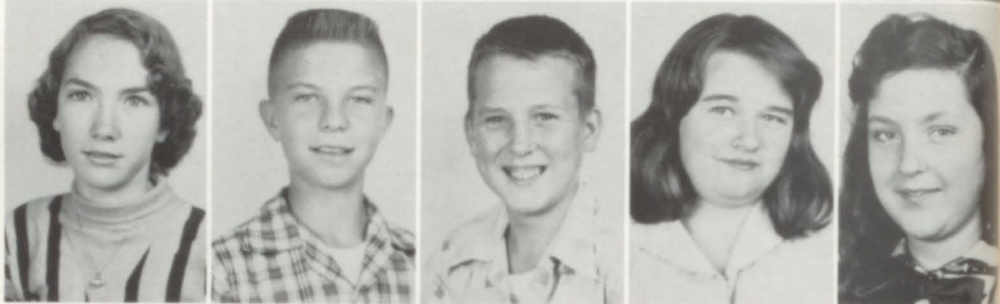
Beverly Harmon
 Vivian Harmon
 June Harris
 Peggy Haynes
 James Lee Haynes



John Hazelwood
 Martha Ray Hill
 Larry Howard
 Carolyn Howard
 Robert Hullett



Barbara Hunter
 Ronald Hurst
 Randall Hyde
 Barbara Isbell
 Charlotte Johnson



Gregory Jones
 Roger Dale Kendrick
 Barnette Lawley
 Ronald Lee
 Sandra Lewis



Janie Lewis
 Johnny Lockridge
 Judy Maddox
 Virginia Martin
 Ben Miller



Shirley Moss
 Donald Musgrove
 Julia McLaughlin
 Gylene McInnish
 Julia Ann McNabb



Ann Parks
 Robert Partain
 Iris Partridge
 Paulette Perkins
 Bobby Perkins



Patricia Phillips
 Betty Polk
 Sherrill Ramsey
 Robert Ramsey
 Janice Rich



Shirley Rich
 Perry Rich
 Joyce Richey
 Arthur Riser, Jr.
 Ira Etta Selby



Walter Self
 Carol Simpkins
 Margaret Sisk
 Lillie Skelton
 Randle Smith



Louise Smith
 Roger D. Smith
 Hubert Stevens
 Mary Ellen Sweatt
 Jerry Taylor



Carolyn Tipton
 Jerry Tipton
 Roger D. Tollison
 Bernard Tucker
 Danny Walker



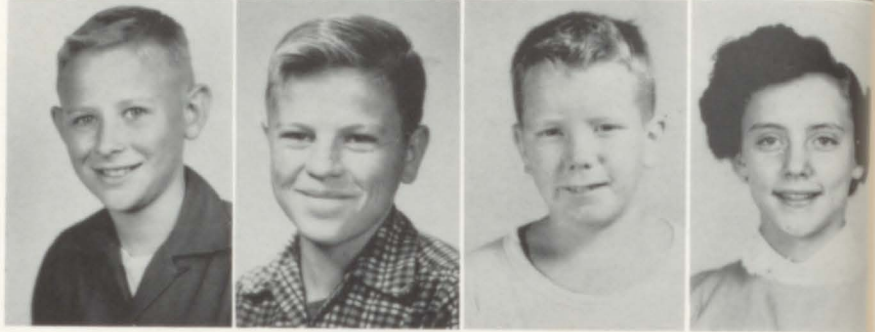
George Walker
 Margie Watlington
 Annie Ruth Watlington
 Larry Webster
 Arvilla Williams



Glenda Wilder
Bonnie Nell Wells
John E. Williams
Etta Lou Williams
Jackie Wilson



Tyrus Wood, Jr.
James Baxter
Melvin Ferguson
Gaynell Guin



Seventh Grade
4-H Club Officers





rganizations





Pelmel Editors

FAYE ROOKER

ROSA ANN WHEELER



Pelmel Staff

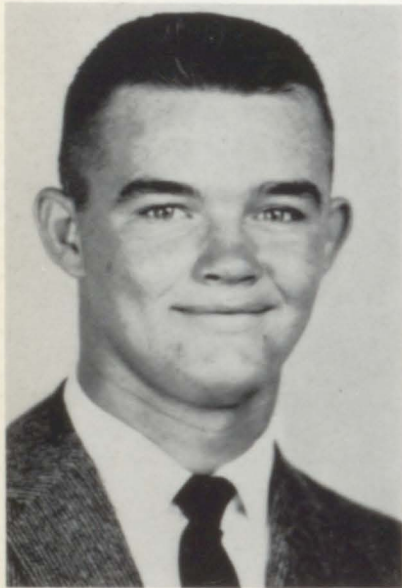


Pelmel Aides



Student Council

Bobby Burnham, Reporter; Sandra Sims, Secretary; Rodney Love, Vice President; Thurman Henninger, President; Carol Roberts, Vice President; Mike Reece, Treasurer; Mr. John Slovensky, Advisor.



The President Speaks:

Dear Friends, Fellow Students and Classmates,

During the past year I have had many memorable experiences while serving as President of the Student Council. We have had wonderful co-operation from everyone connected with the school. I feel that much has been accomplished for the good of the school. The whole faculty and student body have been wonderful in their attitude toward the projects of the school.

With the experience I have gained I know I can face the future better prepared for whatever is before me. I want to express my appreciation to everyone for making this a happy and enjoyable year.

Thurman Henninger III
President of Student Council



Student Council

Library Club





Letter Club

Pep Club





Pell City High School Band and Majorettes

Bernice Goodgame, Pricilla Simpkins, Treasure Jones, Sandra Stevens, Linda Love, Waymon Carlisle, Jean Rich, Nancy Henninger, Dottie Mays, Beth Coleman, MASCOT; Becky Mills.





Future Farmers of America



Future Homemakers of America



Spanish Club



Art Club



Spotlight Staff

Spotlight Aides





Future Teachers of America Club

Bus Drivers Club





Beta Club

MISS NIOMA LEE -----Sponsor

TEDDY PATTERSON ----- Vice President

WYNELL BARBER ----- Secretary

FAYE ROOKER ----- Treasurer

BILL PHILLIPS ----- President

Dramatics Club

MR. C. C. LEE, Sponsor





ctivities





Homecoming Queen

Gail Merryman

COURT: Sandra Sims, Sandra Stevens, Gladys Peavey, Betty Lou Hollis
and Barbara Ann Brown





Homecoming Parade



SANDRA JOHNSON

Miss Pell High

1957-1958



The Queen and Her Court



The Lead-Out





Miss New Year's Eve Queen

JEAN RICH
1957 - 1958



BEST FIGURE - BEST PHYSIQUE
Frances Mulverhill - Bobby Flemings
MOST DIGNIFIED
Frank Whitten - Rachel Hardwick



MOST TALENTED
Bobby Burnham - Wynell Barber
CUTEST COUPLE
Lelwin Gore - Sandra Johnson



MOST INTELLECTUAL
Thurman Henninger - Gale George



BEST PERSONALITY
Everett Dill - Shaughneen Riley





QUEEN JEAN



I SEE YOU!



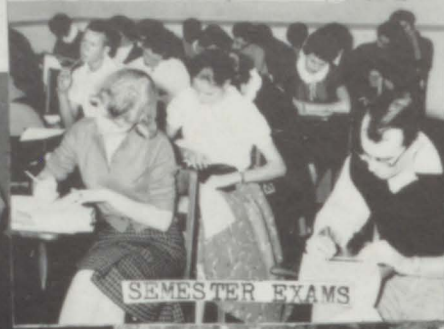
BEAR BRYANT AND CREW



QUEEN SAND



THEN AND NOW??



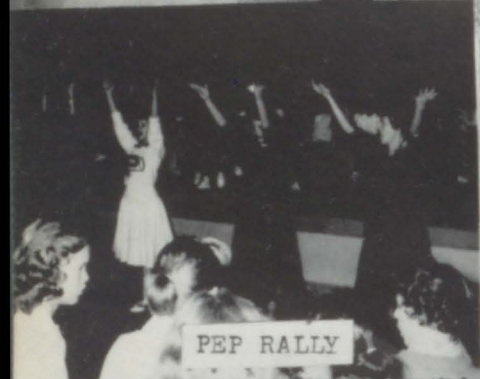
SEMESTER EXAMS



BROTHER AND SISTER LOVE



CHEESE



PEP RALLY



KING JOHN



3 STOOGES



SENIOR PARTY



AIN'T LOVE GRAND?



WOW??



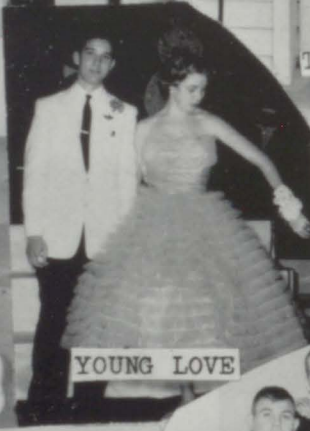
THE VINES TWINS



WORKING ON THE ANNUAL



SENIOR MAJORETTE



YOUNG LOVE



IPANA SMILES

DANCING IN THE DARK!



KENNETH ROBERT AND JOE



LET'S HAVE A PARTY!

WHAT?



TWINKLE



MOST HANDSOME AND MOST BEAUTIFUL
Grant Hazelwood and Jean Rich



BEST DANCERS
Teddy Patterson and Faye Rooker

MOST CONCEITED
Bill Phillips and Barbara Vines



MOST POPULAR
Pat Gravett and Mike Harvey

FRIENDLIEST
Dale Lee and Betty Herren



WITTIEST
Jeanette Arnold and Dickey Ely



MOST COURTEOUS
Kenny King and Rosa Wheeler





MOST ATHLETIC

Gerald Hardwick - Nancy Blankenship

BEST ALL-AROUND

Frances McConatha

Ellis Perrin



MOST DEPENDABLE

Rosemary White - Don Willis

MOST BASHFUL

Barbara Smith

Paul Bryant

BIGGEST FLIRTS

Johnny Alexander

Betty Hollis



BEST DRESSED

Harold Willingham - Jollie Kidd



MOST LIKELY TO SUCCEED

Sam Harmon - Margaret Garrison

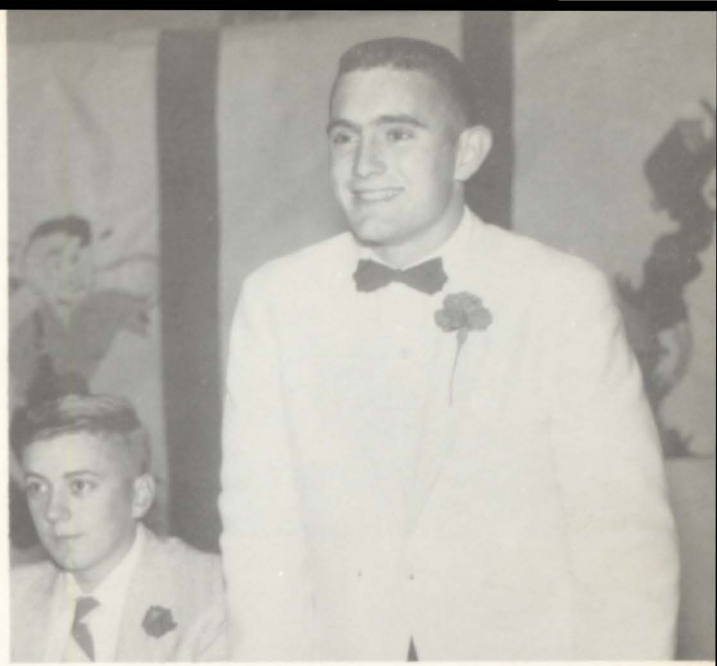




WELCOME
to
Dogpatch



1956-1957
JUNIOR-SENIOR BANQUET
Theme: Welcome to Dogpatch





MIKE HARVEY - Outstanding back,
GERALD HARDWICK - Outstanding lineman,
THURMAN HENNINGER - BILL PHILLIPS - Outstanding scholastic and athletic achievement.

Honor Page



RONALD BURNHAM - All-County basketball player.
ROBERT WALLIS and ROY JACKSON - Delegates to the national F.F.A. convention, Kansas City, Kansas.

FAYE ROOKER
County D. A. R. Good Citizenship Girl.



LINDA HOWARD
County Miss F. F. A. Sweetheart.





thletics



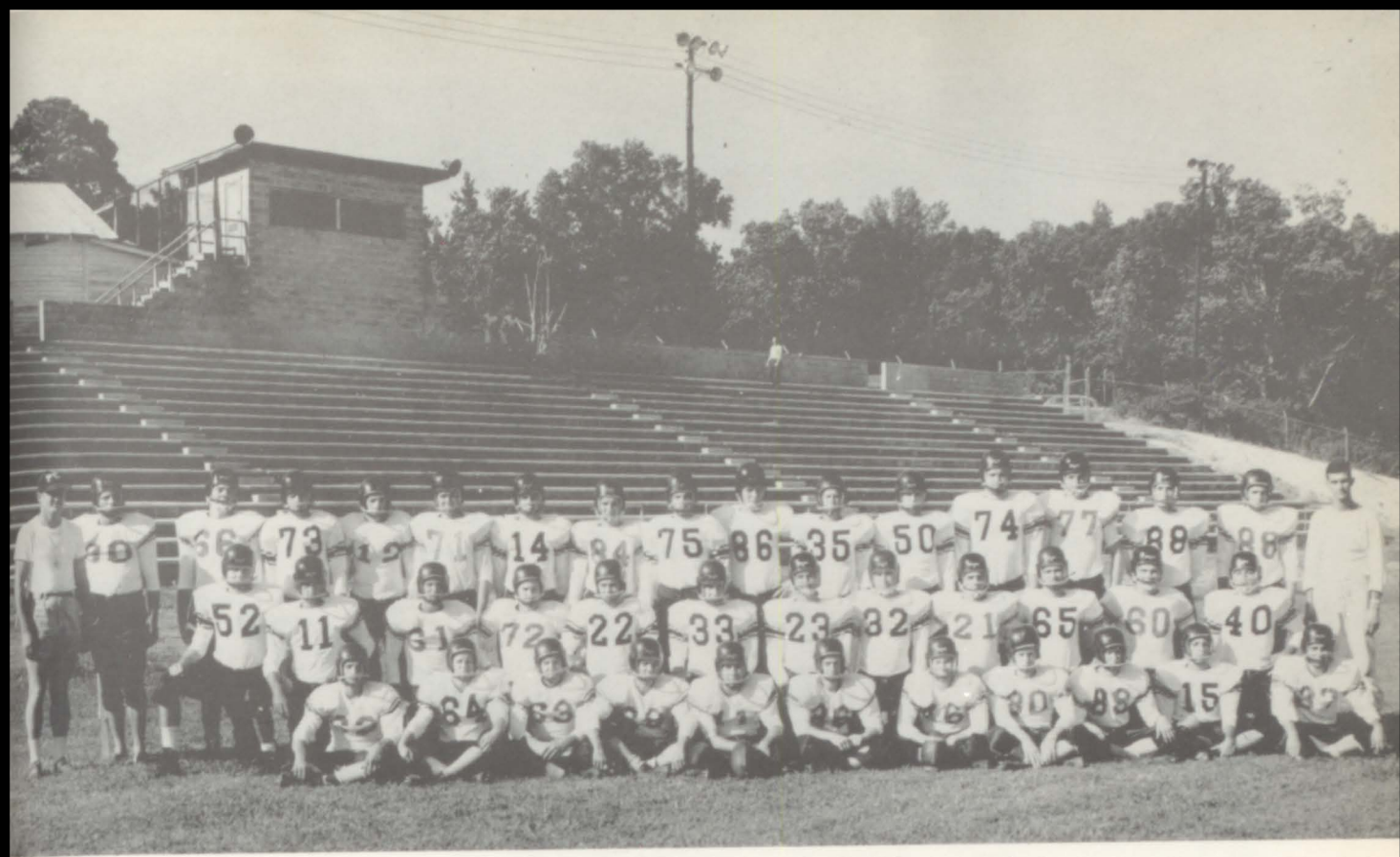


Senior High Cheerleaders

Donna Youngblood, Mascot; Karen Spradley, Head Cheerleader; Faye Rooker, Bobbie Smith, Sandra Johnson, Dimples Howard, Susie Rich, Wanda Lovell.

Junior High Cheerleaders





Senior High Football Squad

Coaches: WILL GLOVER, JOE ROBINSON

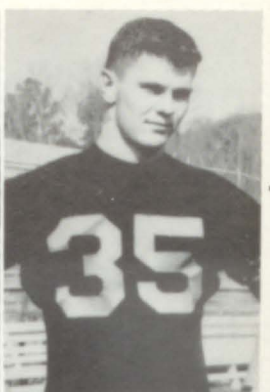
Captain: MIKE HARVEY 21

Co-Captain: GRANT HAZELWOOD 60

Junior High Football Squad

Coaches: BILL HOWELL, HUGH WILLIAMSON



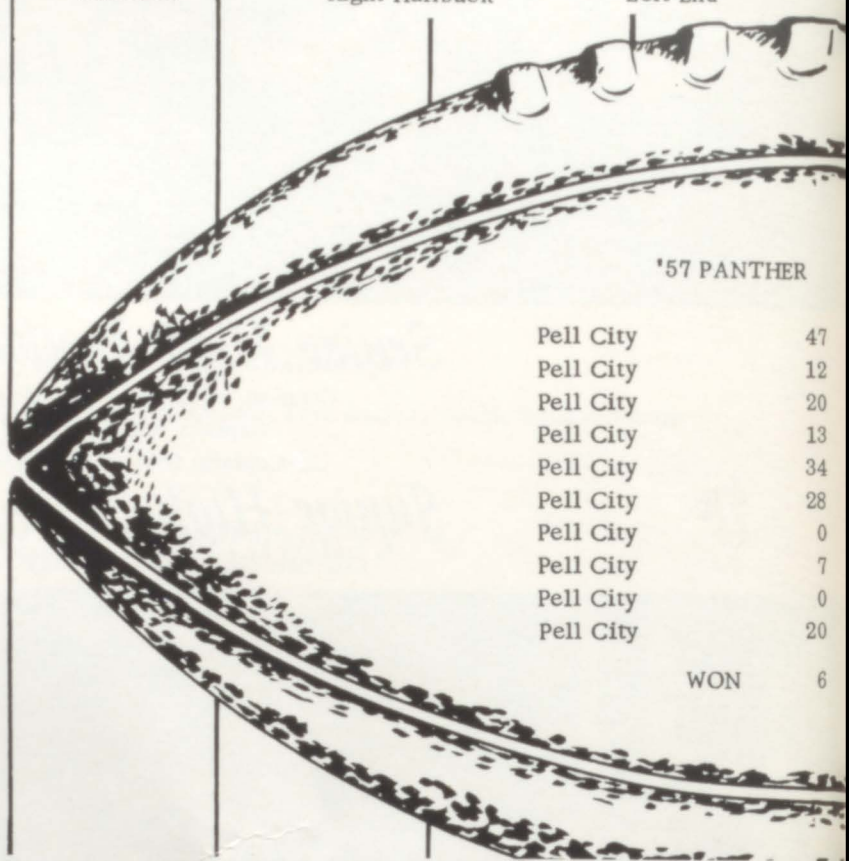
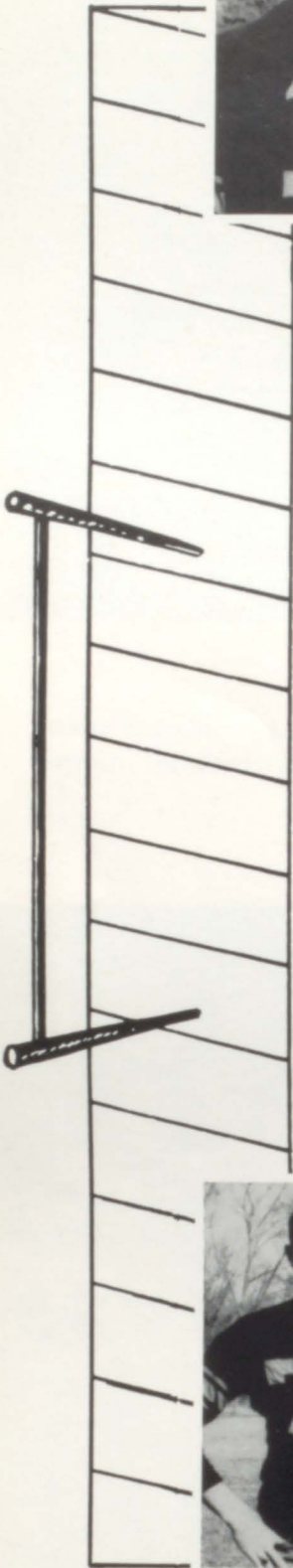


WOODY
ADAMS
Quarterback

MIKE
HARVEY
Fullback

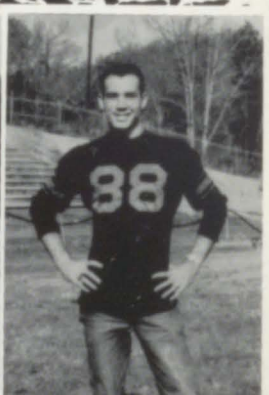
TEDDY
PATTERSON
Right Halfback

BOBBY
FLEMING
Left End



'57 PANTHER

Pell City	47
Pell City	12
Pell City	20
Pell City	13
Pell City	34
Pell City	28
Pell City	0
Pell City	7
Pell City	0
Pell City	20
WON	6

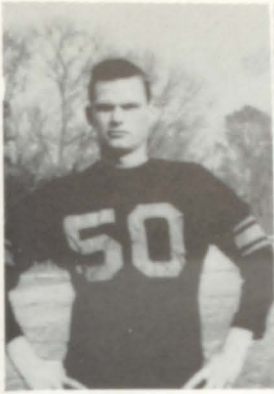


BILL
PHILLIPS
Right Tackle

GERALD
HARDWICK
Left Tackle

ELLIS
PERRIN
Left End

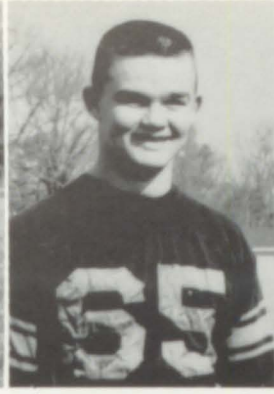
LELWIN
GORE
Right End



JOHNNY
ALEXANDER
Center



GRANT
HAZELWOOD
Left Guard



THURMAN
HENNINGER
Right Guard



PAUL
BRYANT
Right Guard

SCHEDULE

Wedowee	14
Lincoln	0
Glencoe	0
Alexandria	21
Hanceville	0
B. B. Comer	0
Jacksonville	21
Phillips	40
Sylacauga	26
Talladega	12

LOST 4

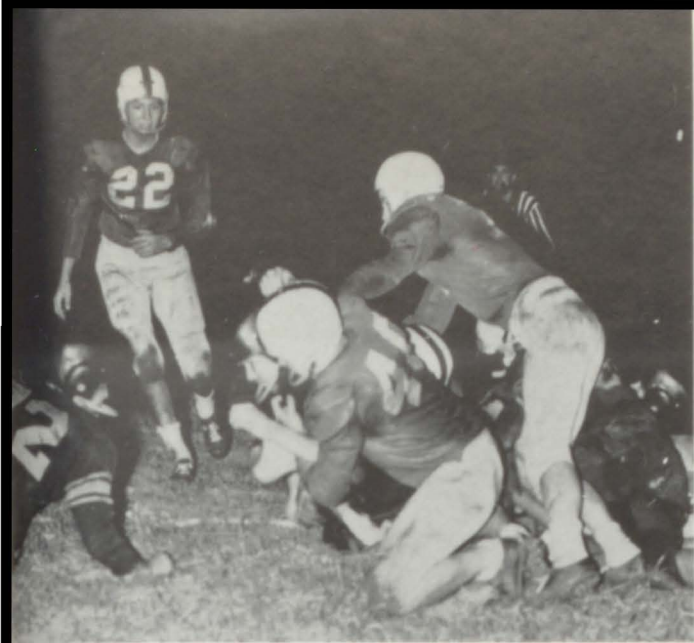


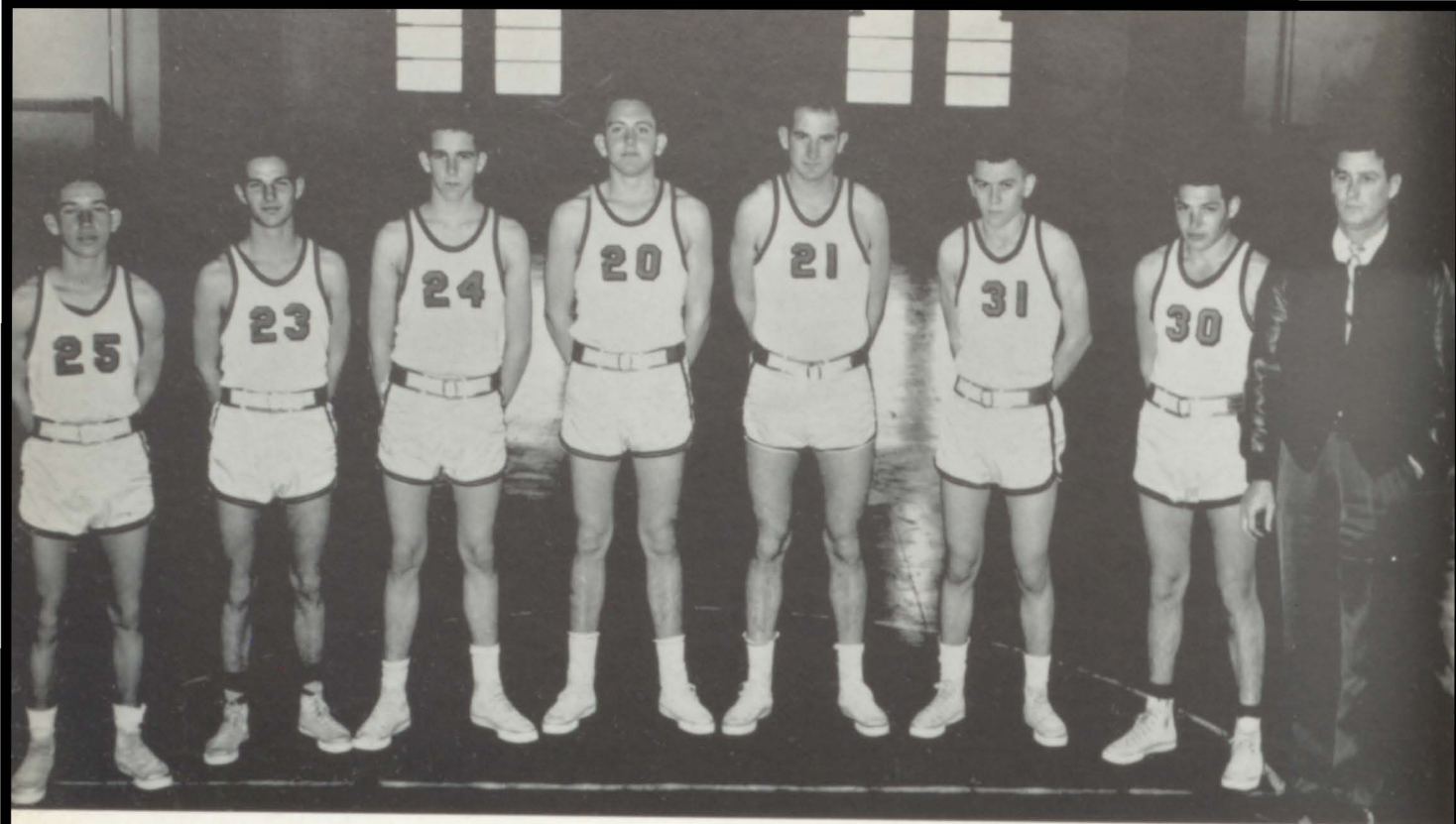
Coach and Senior Football
Players



Attending Physician at
Football Games
DR. A. F. RISER







Senior Basketball — "A" Team

Captain - WALLY BURNHAM, Coach - WILL GLOVER

Senior Basketball — "B" Team

Captain - FOSTER DRUMMONDS, Coach - JOE ROBINSON





*Junior High Basketball
"A" Team
Junior High Basketball
"B" Team*





MER-WHIMP!



WASHINGTON, HERE WE COME!!



I'M MEAN

NOW IT'S THIS WAY!



I'M WALKIN'

THIS IS A SECRET!



OH!



CHEERLEADER



TEDDY



I BEN SICK!



A GOOD SENIOR CLASS



THESE CROWDED HALLS



P.E. LAST YEAR

THE BEST!



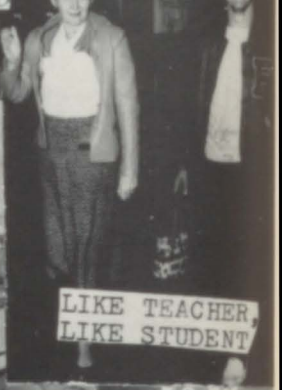
DO YOU NEED THIS EXCUSE?



CUTE!



GOOD QUESTION



LIKE TEACHER, LIKE STUDENT



SOMETHING FUNNY??



HOW?

PEEK-A-BOO



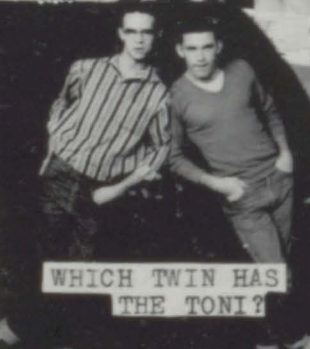
DON'T DO THAT!



FREAK



SENIOR BELLE



WHICH TWIN HAS THE TONI?



JR. HIGH DAYS



JUNIORS THEN SENIORS NOW!



HOMECOMING DANCE

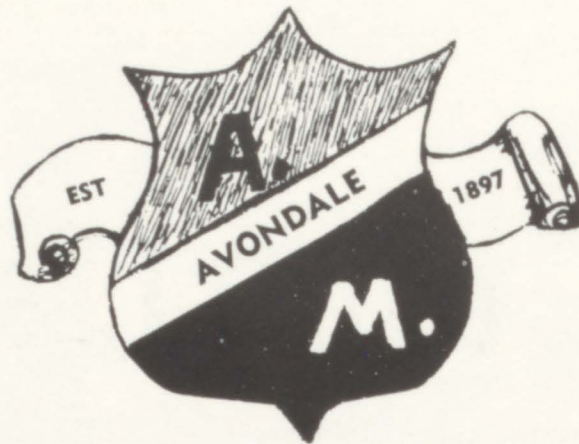
BO-BO



Advertisers



AVONDALE



MILLS

Founded By

Governor B. B. Comer

In 1897

General Office: Sylacauga, Alabama

*Roy
Holladay*

MOTORS
Dodge
and
Plymouth

Phone - ED-8-7112



Compliments of
SAXON'S
CANDY COMPANY



Saxon's welcome you at our store right
in PELL CITY, Ala. on U. S. 78. It's a
great place for a break and a treat.

Compliments of
PELL CITY
TIRE REBUILDERS

Guaranteed Quality Recapping

11 South 20th Street
ED-8-2814

Pell City, Alabama

PELL CITY'S
FIVE AND TEN

Self-Service Shopping

ST. CLAIR
FARMERS EXCHANGE, INC.

Pell City, Alabama

Read
THE
ST. CLAIR
NEWS-AEGIS

Everything That's Worth
Reading
in
St. Clair County
ED-8-2321

SUBLETT'S MUSIC SHOP

Latest
RECORDS

Popular - Bop - Western
Music Lessons

By MRS. P. L. SUBLETT

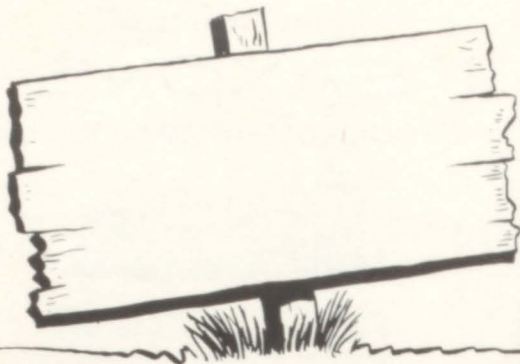
Call ED 8-7022
Sacred Song Books
15-18th St. South

Compliments

Ginn

GROCERY

Pell City Phone - ED-8-7314



KIDD'S
SERVICE STATION

Eden, Alabama

Phone ED 8-7010



Starnes
SERVICE STATION

2313 Cogswell Avenue

Phone ED 8-7625

REECE'S SHELL



SHELL
SERVICE STATION

Eden, Alabama

Phone ED 8-7914



Safety Is Sure
With a

Smith's
RECAPPED TIRE

Pell City, Ala.



J.L. Garrett

STANDARD OIL AGENT

Compliments of
"NIXONS
SERVICE STATION"

(DILL'S)

Pell City, Ala.

Phone ED-8-9298

**IF IT'S GOOD FOOD
YOU WANT..**

BILLIE'S
DRIVE IN
and

Visit



GOODGAME'S
GULF SERVICE

12 Miles South of Pell City
Highway 231 Truck Stop

Compliments of
Pell City

Dairy Queen

for
"The Home of the Cone With
the Curl on Top"

Malts, Sundaes, Shakes

Compliments of

L. G. BALFOUR CO.

E. G. FITZGERALD, GENE FITZGERALD AND

JIM JOHNSON

Rings - Invitations - Cards - Diplomas

P. O. Box 1072
Birmingham, Ala.

Citizen's

DRUG

As Near as Your Phone
ED-8-7721

Pell City, Alabama

SALES  SERVICE

ST. CLAIR

MOTOR COMPANY

Phone ED-8-7524
Pell City, Alabama



Call by Number - It's Faster

COOSA VALLEY
TELEPHONE CO.



Pell City, Alabama

Compliments of
SAINT CLAIR
FEDERAL

SAVINGS AND LOAN ASSOCIATION

Phone EDgewood 8-2613
P. O. Box 248 Pell City, Ala.



Jefferson

HOME FURNITURE CO.

"St. Clair County's Largest Store"

Pell City

Phone-EDgewood 8-2231



This newspaper grew **in a forest**

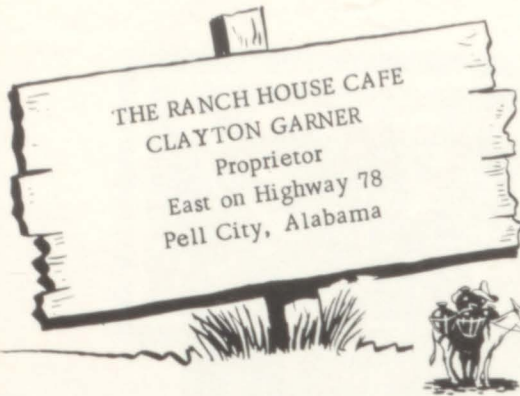
America's publications rest on wooden foundations. Until man discovered that paper could be made from wood, no great, mass-circulation newspapers existed.

Forest fires each year destroy enough pulp size trees to produce 3,250,000 tons of newsprint which is enough to print every newspaper in the U. S. for 12 months.

By keeping fire out of the woods, you are doing your part to Keep America Green.

COOSA RIVER NEWSPRINT COMPANY

Coosa Pines, Alabama



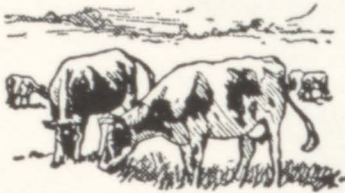
**IF IT'S GOOD FOOD
YOU WANT..**

Visit



BUD'S GRILL
Short Orders
Sandwiches

Pell City, Alabama



TELEPHONE 67386

SPRUIELL'S DAIRY FARMS

LEEDS, ALABAMA

For better dairy products

P. O. BOX 126



COMPLIMENTS OF
Pell City
Rexall
DRUG CO.



Pell City, Alabama

Phone Ed-8-7123



**You're money
Ahead!**

GEORGE A. HORMEL & COMPANY
Beef, Pork, Lamb, Dairy Brand Hams
Bacon and Sausage

112 North 14th Street

Birmingham, Alabama

Compliments of

Judge Frank Embry

Congratulations to the

Senior Class of '58

Congratulations
to the Seniors

I. A.
"DETE"
FAMBROUGH

Best Wishes
to the Seniors

TALMAGE
FAMBROUGH

COUNTY SOLICITOR

Compliments of

CLAYTON
CLINIC

Compliments of

Martin

HOSPITAL & CLINIC

Compliments of

MR.
ORIS
HARE

Ragland, Ala.

Congratulations
to the Seniors

MR.
ALSE
SCOTT

TAX COLLECTOR

Congratulations to the
Seniors of 1958

MR.
JOEL
N
WOODS

Congratulations to the
Senior Class of '58

HOYT
B.
HAMILTON

Compliments of

MR.
BUFORD
ROWE
JUDGE OF INFERIOR COURT

Pell City, Alabama

Compliments of

a Friend

Congratulations to
the Senior Class
of 1958

From

MR. AND MRS. LANEY

BAIN AND BOB

Kilgroe

SHEET METAL

Heat

Air Condition

Metal Works

Congratulations to
the Seniors

Warren

OIL COMPANY

Pell City, Alabama

Compliments of

KING HARDWARE COMPANY

Anniston, Alabama

Congratulations
to the Seniors

MR. AND MRS. EARL BOWMAN

DONALD AND JANICE

"Best Wishes"

from

Mays & Jones

The People's Store

Compliments of

Kilgroe

FUNERAL HOME

Pell City, Alabama

*Fresh MEATS
and VEGETABLES*



PELL CITY FOOD CENTER

Home Owned and Operated

by

MR. AND MRS. J. D. ABBOTT

Lowest Prices

Compliments of

Robersons

Pell City

Phone Ed-82631

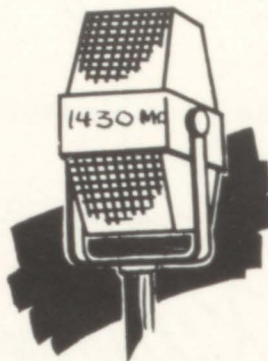
BETTER GROCERIES



MAJOR JONES GROCERY
Fancy Groceries and Meats
A Complete Food Market

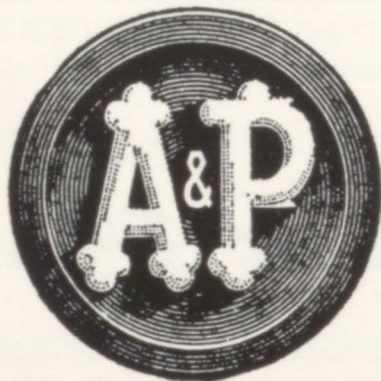
WFHK

RADIO
Your Local
News



STATION
Station for
Music

THE ST. CLAIR BROADCASTING SYSTEM, INC.



No Coffee at Any Price
Gives You More
Good Cups Per Pound
Than A&P COFFEE

Snider's
FLOWER AND GIFT SHOP



Delivery Service
Day or Night

EDgewood 8-2922

Hwy. 78 E.

Pell City, Ala.

Citizen's

DRUG COMPANY

Congratulations to the

Senior Class

Compliments of

EDEN
SERVICE STATION

R. ROOKER, Mgr.

Phone Ed-8-7710

Compliments of

STARR'S
WELDING SHOP

Anniston, Ala.

Compliments

**"W. B.
"DICK"
ROBERTSON**

GENERAL CONTRACTOR

Eden, Alabama

Tel. ED-8-7557

Compliments

BELL
HARDWARE CO.

Pell City

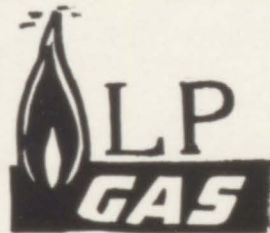
Ph. Ed-8-7413

Compliments of

**OLAN
MILLS**
STUDIO

1121 1/2 Nobel Street

Anniston, Alabama



AUTOMATIC
GAS COMPANY

OF PELL CITY

Butane
Box 91

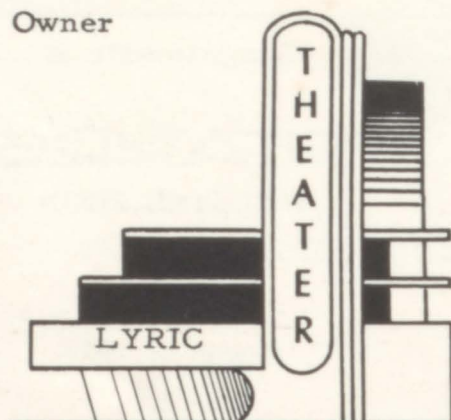
Propan
2301 Cogs Ave.

Phone Ed-8-7522

Compliments
of
LYRIC THEATRE AND
THE ST. CLAIR DRIVE-IN

JAMES CAGLE

Owner



Williams

BEAUTY SHOP

For the New Look

"See Sook"

Phone ED 8-7415

Prop. SAVANNAH WILLIAMS

Oper. DOT GANT

Compliments of

McKEE

BARBER SHOP

Pell City, Alabama

Compliments of

PELL CITY

AUTO PARTS

Pell City

ED-8-7214

Vaughan
RADIO SERVICE
Pell City's Oldest
-TV Service-

19 St. South Pell City, Alabama

PELL CITY PRESS

Quality Job Printing

Phone ED 8-7898

G. A. ALDERMAN

Jimmy's

SHOE SHOP

For Better Shoe Service

Pell City, Alabama

Compliments
of
HUGH LONERGAN

Candidate for
Circuit Clerk

Latest Fashions
COHEN'S STORE
Pell City, Alabama
Across the Street
From
Union State Bank

HARGROVE
BARBER SHOP
CAFE AND GROCERY
Highway 78
Pell City, Ala.

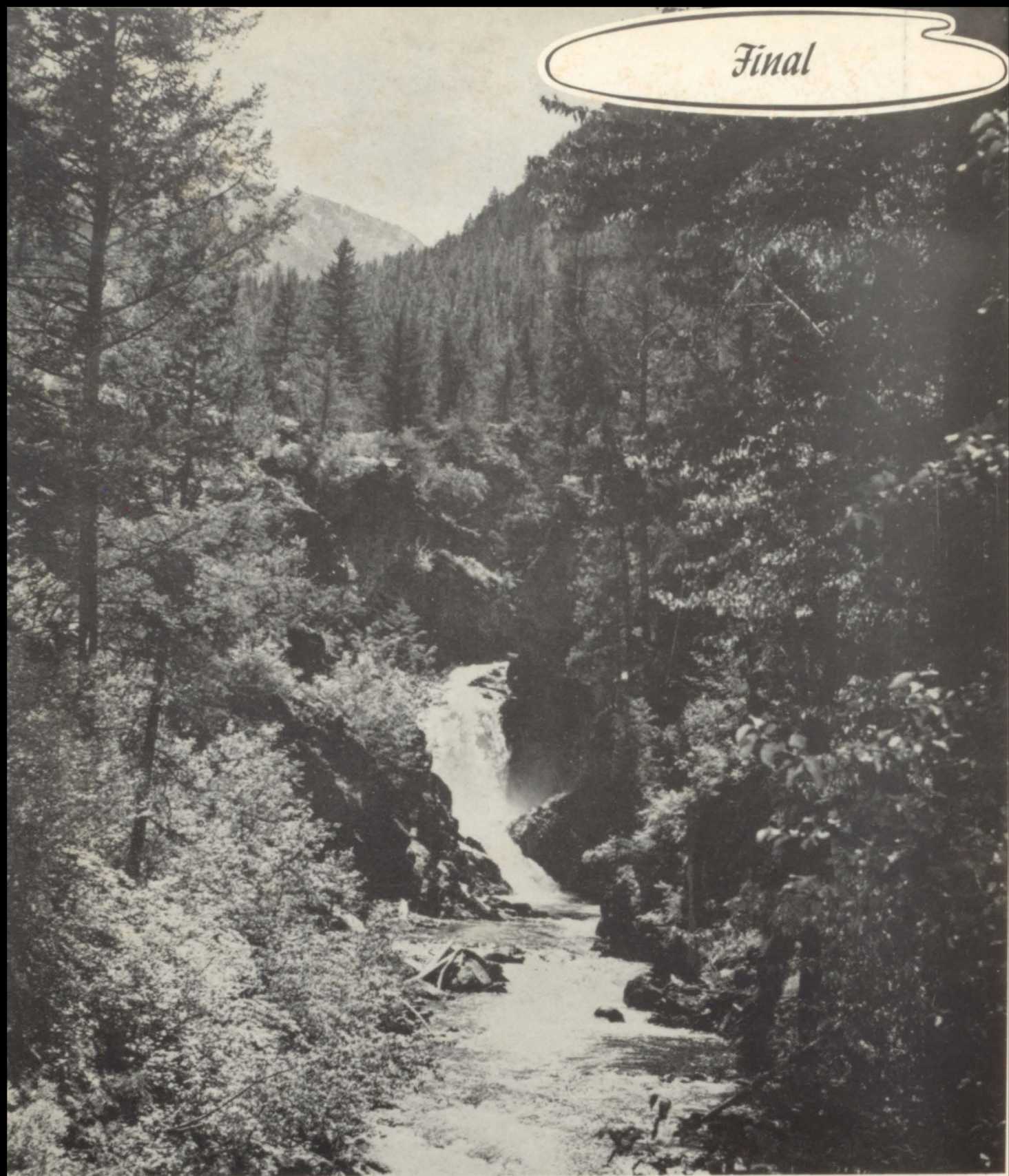
Thank You

Donors

THE
SENIOR CLASS
OF
1958



Final



We, the 1958 Pelmel staff, offer our heartfelt thanks to the people that have helped us make this yearbook possible.

To Mrs. Mewbourne, our advisor, and Van Blankenship, our photographer, we hope you feel rewarded with the finished product.

And last, but not least, we hope that you, the students, cherish the memories and recollections that this annual holds.

