

AT CAMP EDEN —

Oct. 2, 1969

# Pell City Bible School Opens With 33 Enrolled

A Christian Day School opened September 2, under the auspices of the Bible Methodist Church on the Campus of Camp Eden. This program represents the fruition of a directive from the 1968 annual conference authorizing the Church to operate Christian Day Schools in the several districts of the state. Rev. Gaines Ross was elected to the position of Educational Secretary with an equal number of Ministerial and lay members, to serve on the Day School Educational Committee.

The committee with a number of vitally interested churchmen enthusiastically accepted the challenge. A number of planning meetings were staged, visits were made to Christian Day Schools, and Christian Educational Programs were conducted.

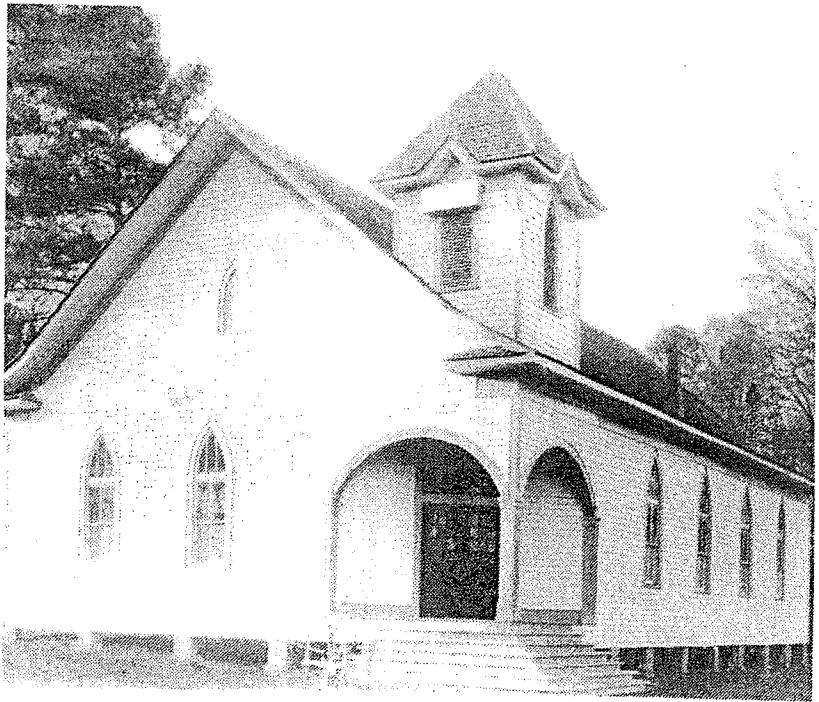
the noble heritage of our country while affording each child a sound general education. It is anticipated that the school program may be in a position to serve those who desire to subscribe to such a cause.

The Rev. Paul G. Brown was appointed Headmaster and Mr. and Mrs. Dan Watkins selected as teachers to develop and implement a sound Christian educational program. Simultaneously dedicated ministers and laymen constructed a school building composed of an office, class rooms, chapel, library, rest room facilities and designated play ground areas.

The objective of the committee was to establish as an integral unit of the Bible Methodist Church a school that would open immediately stating that the philosophy of the school therefore is and must be the idea that education of our children is a responsibility of the church and Christian Principles must permeate their teaching at all levels and in all subjects.

The school bell rang for students from the first through the ninth grades with parents involving themselves in transporting children in buses from Birmingham, Anniston, Talladega, and Pell City with an enrollment of 33. The opening day was highlighted by a very inspiring convocation with church officials and ministers participating to a capacity audience.

The faculty gives the assurance that its intention is to inculcate the great truth of the Bible and



**WESLEY METHODIST CHURCH**—Another one of Pell City's first churches was Wesley Methodist Church. The church stood where Jack's parking lot is now.

348

## Vets Wage Raise Will Be Retractive To April First

An explanation of the new law affecting subsistence benefits for World War II veterans in education or training program was issued today by Harley A. Smith, Alabama Regional Manager of the Veterans Administration.

Smith urged veterans NOT to write or contact Veterans Administration offices asking how to qualify for increased subsistence benefits, which are due to changes in rates, ceilings on earnings and number of dependents.

The higher rates of subsistence allowance will be paid automatically to G. I. Bill trainees whose existing application with VA contain the information needed to verify them for increases authorized under the legislation signed into law during the past week by President Truman.

Adjustments for disabled veterans training under the Vocational Rehabilitation Act (Public Law 60) who are eligible to receive additional benefits also will be automatic, Smith said.

The VA Manager pointed out that in most cases the required information for the adjustment is already on file. When additional information is needed, to establish dependency status, the veteran will receive a form from VA asking for the necessary data. Veteran-trainees are urged to fill in the forms completely and return them promptly to VA. Adjustments will be made on the basis of the completed form.

Smith said the first adjustments that possibly can be made will be in the June subsistence allowances, payable on or shortly after July 1, with the likelihood that part of the initial payments at the higher rates will not be made before the July subsistence checks are sent out, about August 1.

The increased benefits are retroactive to April 1 in most cases and the initial payment at the adjusted rate will include all increases due from April 1 through the end of the subsistence period covered by that check.

Veterans now in training will receive retroactive payments at the new rate when they receive their next subsistence allowance check.

The new law also provides...

## Recreation Area At Little River Forest Now Open

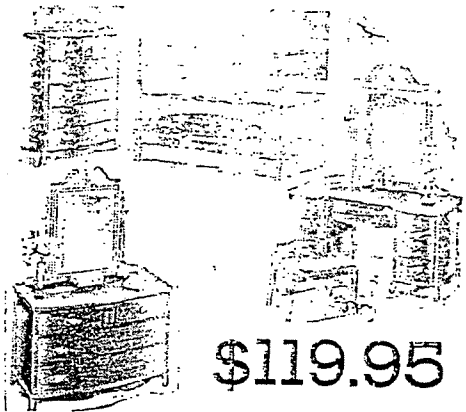
Recreational facilities of Little River State Forest are available for the public's usage, according to State Forester J. M. Stauffer of the Department of Conservation's Division of Forestry. Cabins are available for overnight, week-end and vacation use the year round, he said, and boats may be rented throughout the year. The forest has a 26-acre lake. Swimming and bathhouse facilities will be kept open through September 30.

While no charge is made for fishing in the lake, fishermen are required to secure a permit from Hugh Lumpkin, ranger in charge. It will be valid for one week after issuance. Seasonal permits may be secured from the Montgomery office. Outboard and inboard motors are not allowed on the lake. Visitors are permitted to bring in and use their own boats and canoes on the lake, provided they are re-

moved at the end of each visit. No charge is made for swimming and bathhouse facilities, Stauffer said, provided visitors bring their own towels and do not use a locker. Towel and locker service is available at a nominal fee. Bathhouse and concessions are open daily from 10:30 a. m. to 10:30 p. m., although the district forester may authorize later closing times for special occasions. The state forester also pointed out that picnic parties are welcome to use the area with no charge being made for use of picnicking facilities.

**WESLEYAN METHODIST CHURCH**  
 Rev. J. L. DAVIS, Pastor  
 Phone 12502

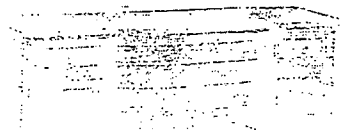
Sunday School 9:45 with P. S. Spruill, superintendent.  
 Morning worship 11 a. m.  
 Evening worship 7 p. m.  
 W. V. P. S. 9:15 p. m. Harold Davis, president.  
 Prayer meetings Tuesday evening 2:30, Friday night 7:30.



**\$119.95**

**10-PIECE BEDROOM SUITE**

Expertly built of hard wood with Mahogany veneers



## A Psalm of Praise

(100)

Leader: Make a joyful noise unto the Lord, all ye lands.  
People: Serve the Lord with gladness: come before his presence with singing.  
Leader: Know ye that the Lord he is God: it is he that hath made us, and not we ourselves; we are his people, and the sheep of his pasture.  
People: Enter into his gates with thanksgiving and into his courts with praise: be thankful unto him, and bless his name.  
Leader: For the Lord is good; his mercy is everlasting; and his truth endureth to all generations.  
People: Praise waiteth for thee, O God, in Zion.  
Leader: To God who led our forefathers in the organization of the Church  
People: We give praise.  
Leader: To God who gave vision for the construction of this building -  
People: We give praise.  
Leader: To Jesus Christ, our chief cornerstone -  
People: We give praise.  
Leader: To the Holy Spirit who hath given wisdom that this building might be constructed -  
People: We give praise.  
Leader: For creative thought given to the planners and to those who have brought pattern and project into practical reality -  
People: We give praise.  
Leader: For all those whose prayers, faith, labors, and sacrificial giving have made this building possible -  
People: We give praise.

## Ritual of Dedication

Leader: To the glory and service of God alone by whose mercies these blessings have come to us -  
People: We dedicate this building.  
Leader: To the praise of Jesus Christ, God's Son, our Saviour and Lord-  
People: We dedicate this building.  
Leader: To the honor of the Holy Spirit, source of light, life, wisdom, and power -  
People: We dedicate this building.  
Leader: For the publishing of glad tidings.-  
People: We dedicate this building.  
Leader: For the proclamation of full deliverance from sin -  
People: We dedicate this building.  
Leader: For the salvation of the lost -  
People: We dedicate this building.  
Leader: For the promotion of spiritual revival and the extension of God's kingdom throughout the land -  
People: We dedicate this building.  
Leader: As a defense of righteousness -  
People: We dedicate this building.  
Leader: May no spirit of pride or self-sufficiency ever dwell herein; May no spirit of worldliness or compromise ever desecrate these walls; May no spirit of unbelief ever find remotest lodging in these walls, In obedience to all that God hath spoken, In gratitude for God's beneficent mercy and love -  
People: We dedicate this building.  
Leader and People (in unison): In the name of the Father, and of the Son, and of the Holy Ghost, we dedicate this building.