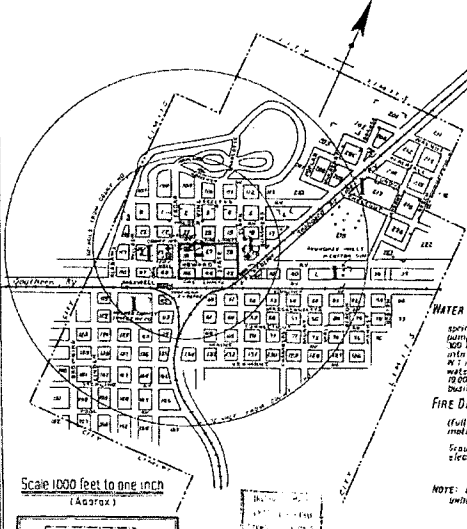


**WATER FACILITIES:**  
Obtained by City Source from over flowing spring 70 miles W.W. at town by 1 1/2 mile centrifugal pump 200 G.P.M. at 100 feet street pump capacity 100 G.P.M. Water is pumped direct from spring into AVONDALE and PELLS CITY on street lines from 10' into distribution by gravity. 2 inches of 8" x 4" water pipes 18 1/2 days before daily consumption was 10,000 gals domestic a fire pressure 80 lbs. in 24 hours action

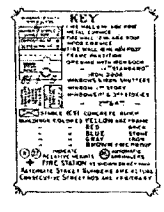
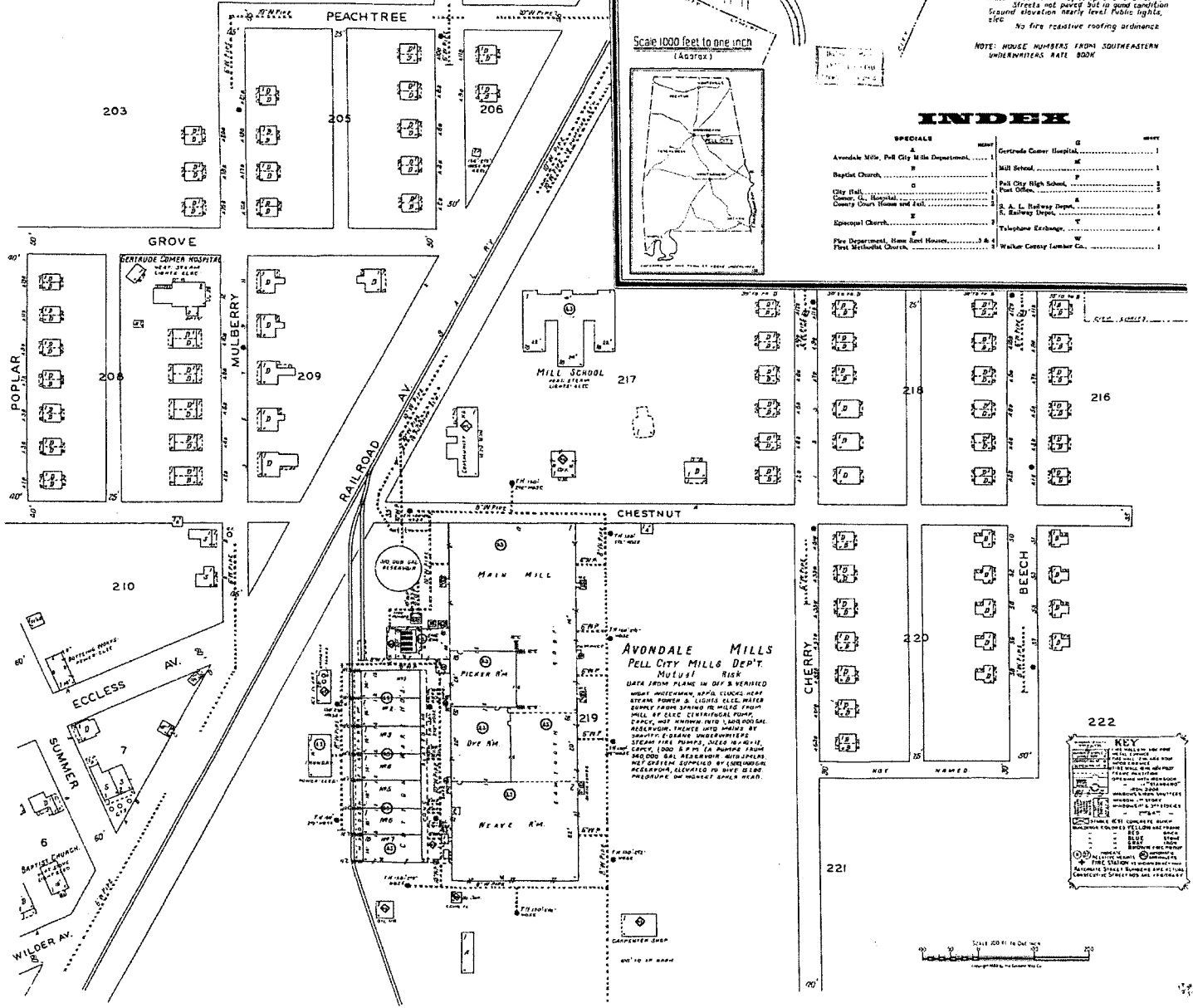
**FIRE DEPT.:**  
Automatic system 1 Chief & 16 Men, Chief fully paid. Engine trucks with 1500 G. hose no motor truck. Alarm by telephone & sirens.  
Streets not paved but in good condition  
Gravel sidewalks nearly level. Public lights, etc.  
No fire reactive roofing ordinance

**NOTE: HOUSE NUMBERS FROM SOUTHEASTERN UNDERWRITERS RATE BOOK**

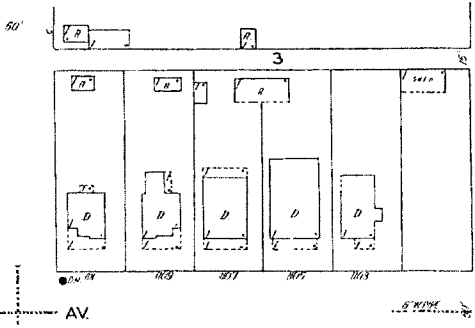
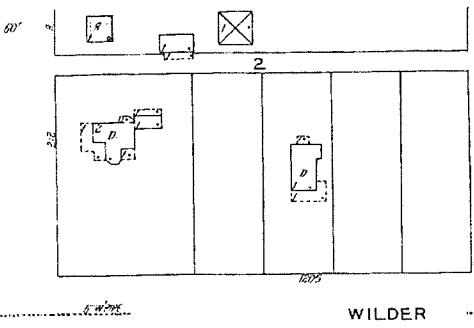
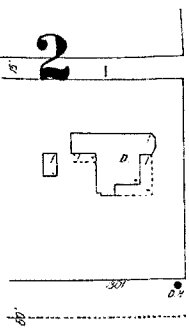


**INDEX**

SPECIALS	NAME	NO.	MARK
Avondale Mills, Full City Mills Department	Gertrude Corner Hospital	12	1
Mill School		16	1
Baptist Church		17	1
City Hall		18	1
County Jail		19	1
County Court House and Jail		20	1
Episcopal Church		21	1
Fire Department, Home Rent Houses, First Methodist Church		22	1
	Walker County Lumber Co.	23	1

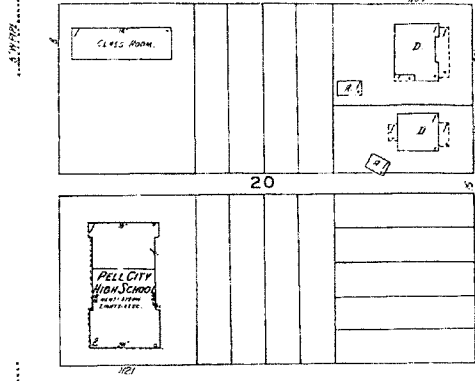
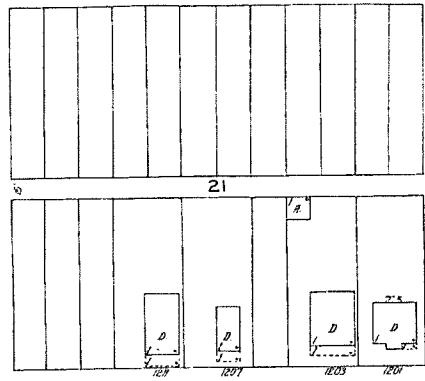
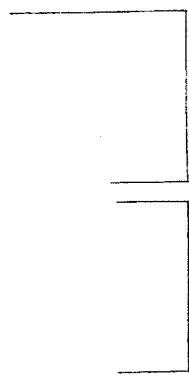


JULY 1930  
PELL CITY  
ALA.



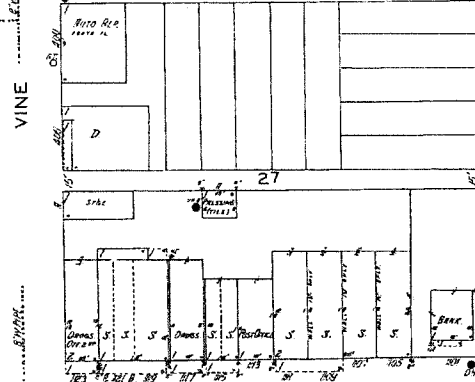
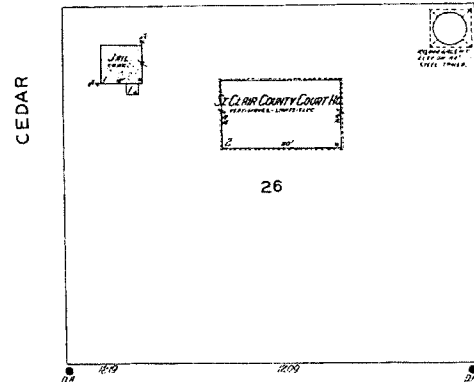
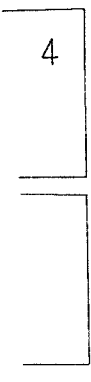
WILDER

AV.



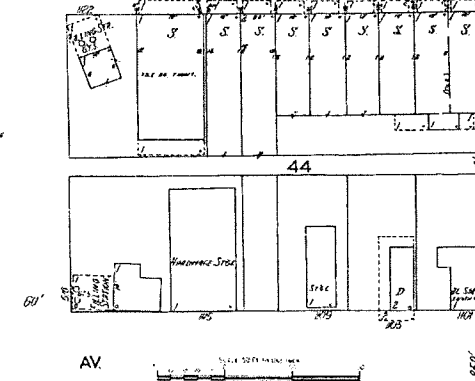
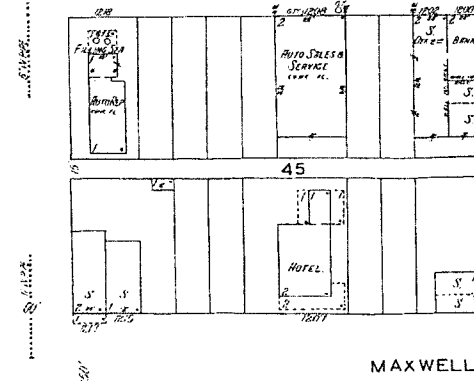
TREMONT

AV.



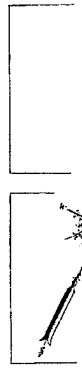
HOWARD

AV.

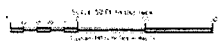


MAXWELL

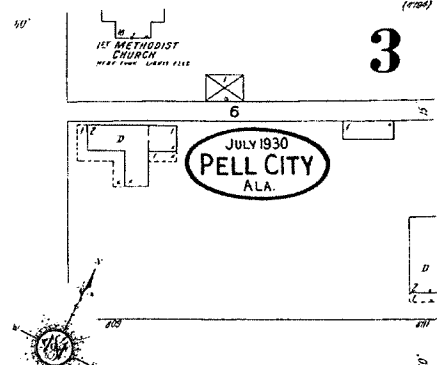
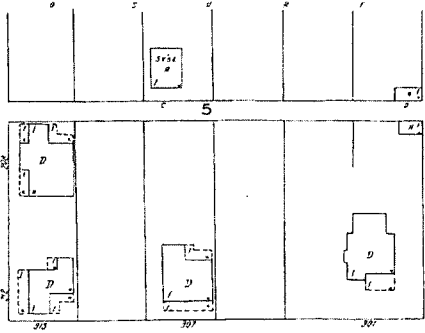
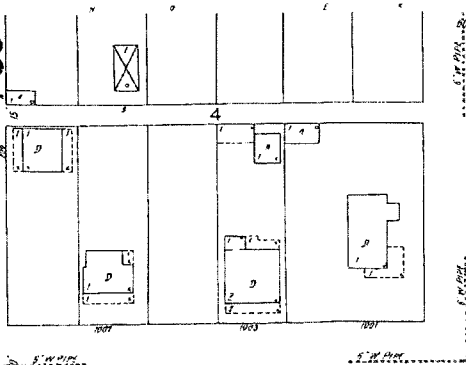
AV.



STATE



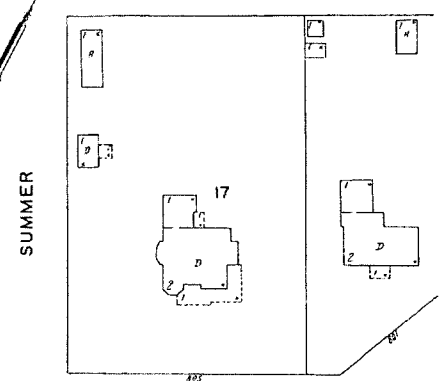
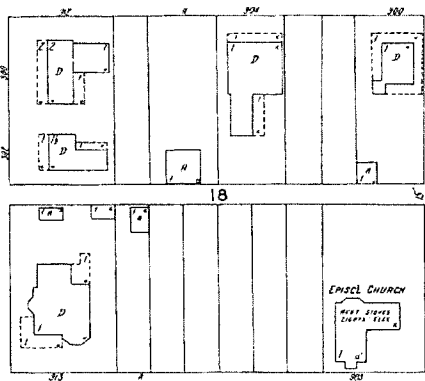
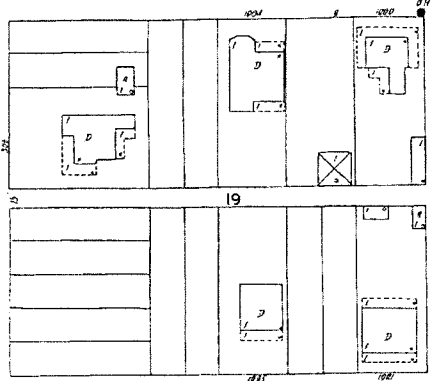
3



JULY 1930  
PELL CITY  
ALA.

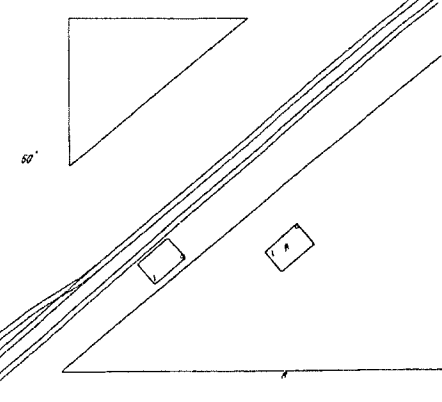
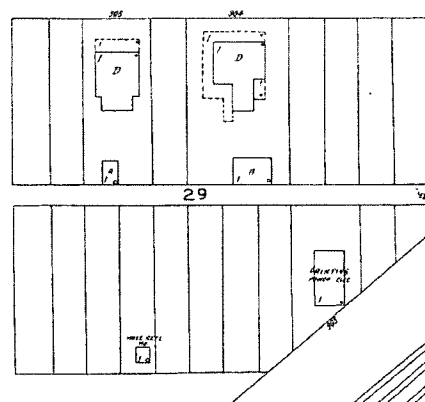
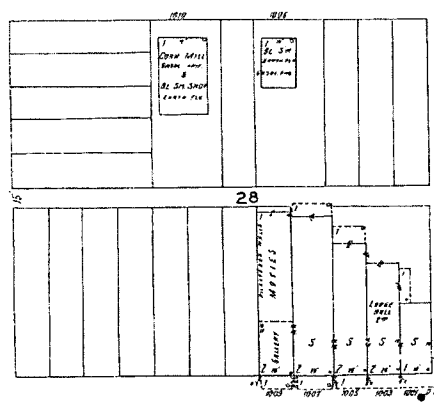


WILDER AV.

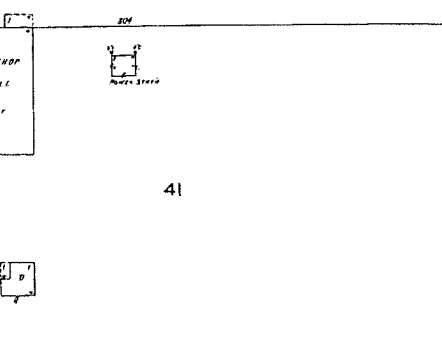
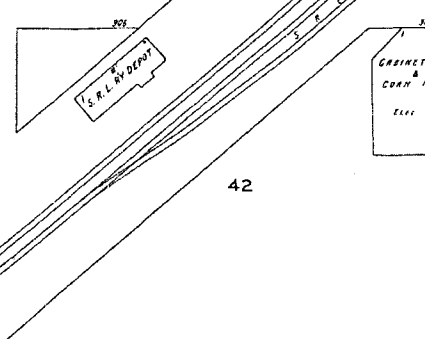
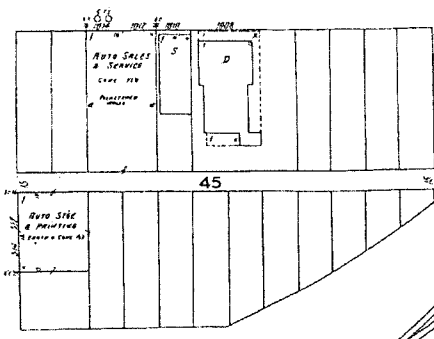


TREMONT AV.

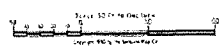
STATE



HOWARD AV.



MAXWELL AV.



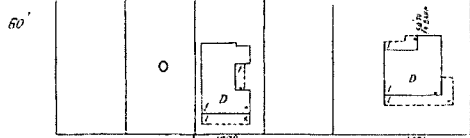
4



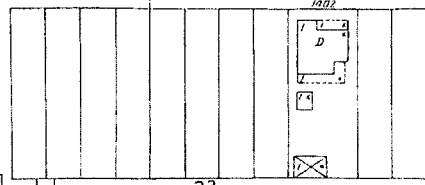
ALABAMA

NOT OPEN

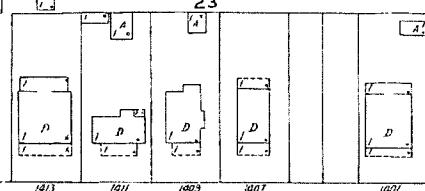
116



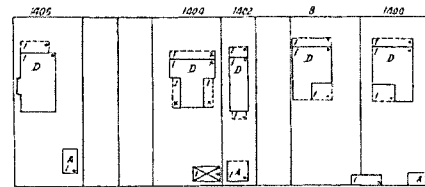
WILDER AV.



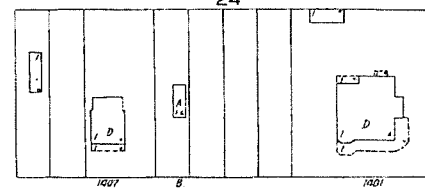
TREMONT AV.



WILSON



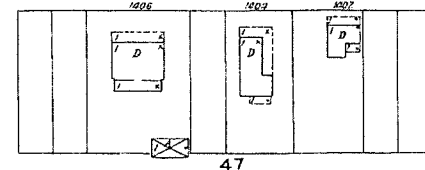
HOWARD AV.



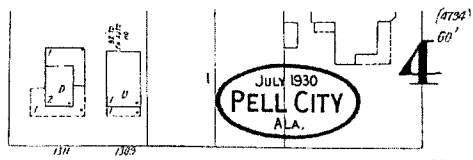
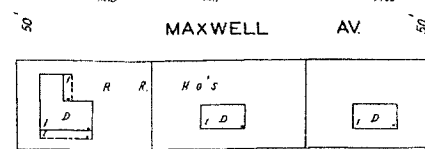
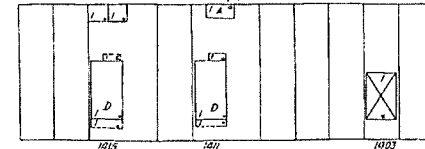
MAXWELL AV.



OAK

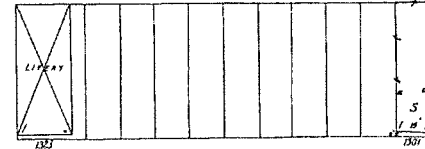
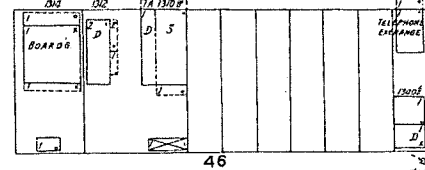
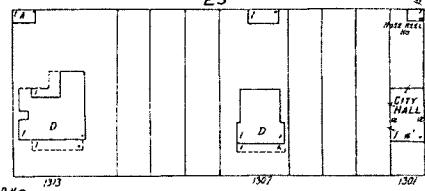
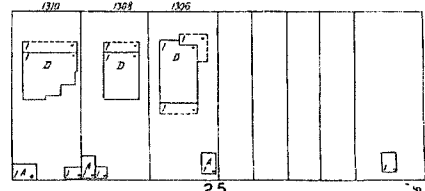
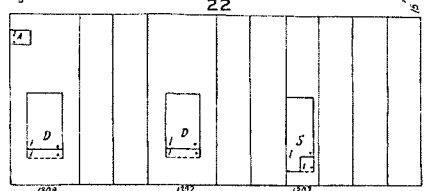
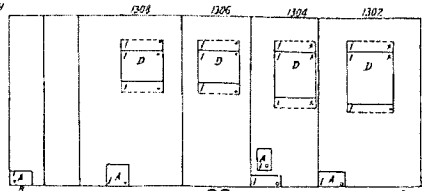


CEDAR



JULY 1930  
PELL CITY  
ALA.

4



SOUTHERN RY. DEPOT

