

of the chest is common. The pain is described as a heavy weight or tight ang sensation. Less often it is a sharp , I even a sick feeling in the upper a like indigestion. The pain can l rig like

was again injected into the artery, the blood clot had been dissolved. This exciting technique, called intra coronary thrombolysis, (thrombolysis simply means dissolving blood clots) spread quickly to heart centers

fairly complex and technical. The important points to remember are that *early* treatment of heart attack symptoms can often reduce the damage caused by a heart attack. Knowledge of the symptoms of a heart attack is

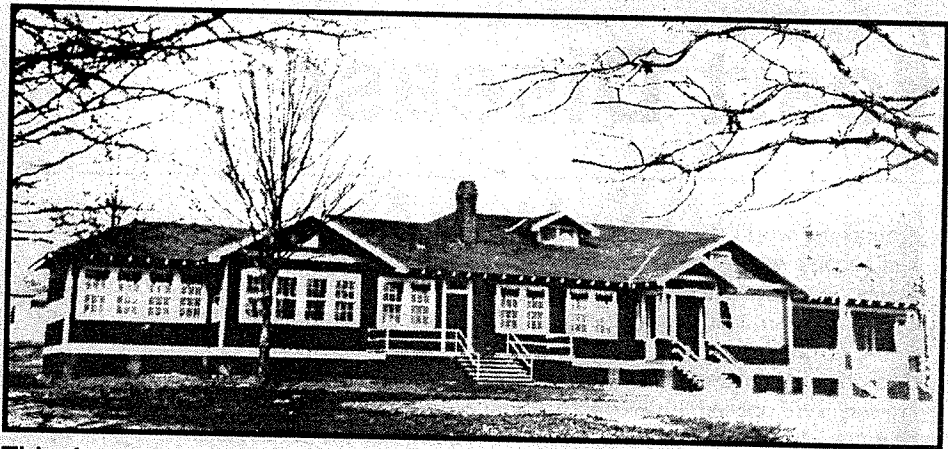
nal medicine sp tices in Pell Ci mingham-Sout nderbilt Universi



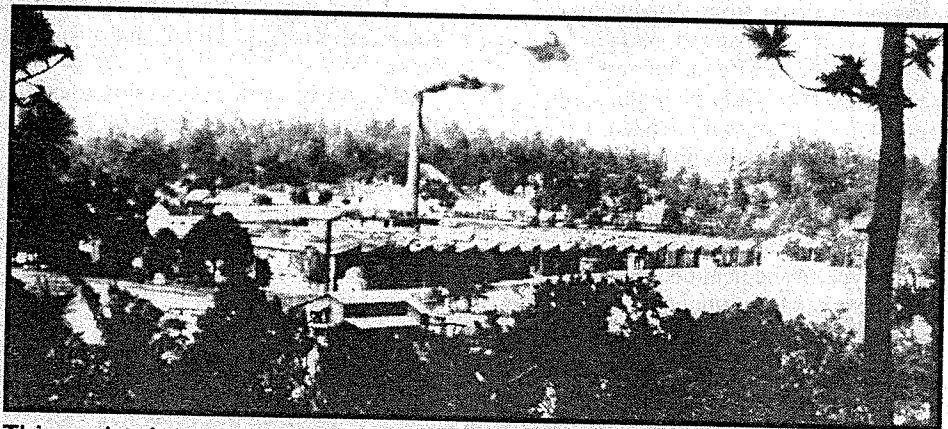
This undated photo of one of Pell City's legendary baseball teams of the 20's and 30's was provided by Patterson. If you can identify any of the players, please mail the identifications to the Centennial Commi at P.O. Box 1185, Pell City.



# Special P



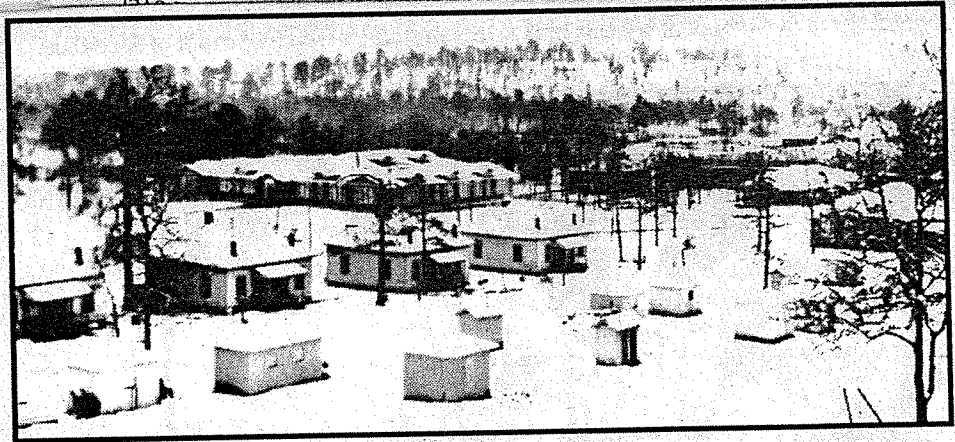
This impressive structure was the Avondale Mills Kindergarten and Community Club House. Both social and educational events were held here daily for over fifty years.



This early view of the Pell City Manufacturing Company (Avondale) shows the great smokestack (one of the tallest in the world) and the unique "sawtooth" construction of the mill itself. This design was a great innovation in 1902 when it was built because it gave natural light and ventilation in the mill. In the days before modern electric lights and air conditioning, this revolutionary design was a major innovation in the south and cotton mill owners from all over the country and as far away as England came to study this modern mill. Note the Hall Hill School to the right of the smoke stack. This school burned in the 1920's.

arti  
well  
ative  
e to  
-en-  
ten  
ad  
-n  
ll  
l

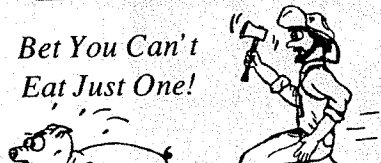
c  
T  
a  
k  
t  
e  
w  
w  
c  
b  
e  
l  
o  
t  
a  
o  
s  
t  
h  
w  
a  
P  
p  
t  
o  
s  
y  
f  
w  
t  
h



This snow covered view of the Avondale Mills village, school and the mill itself (in the trees on the right) was made about the time of the construction of the school which drew many people to settle in Pell City and work for the mill. Note the out buildings and lack of electrical wires!

# UNCLE WILLIE'S Bar • B • Q

Bet You Can't  
Eat Just One!

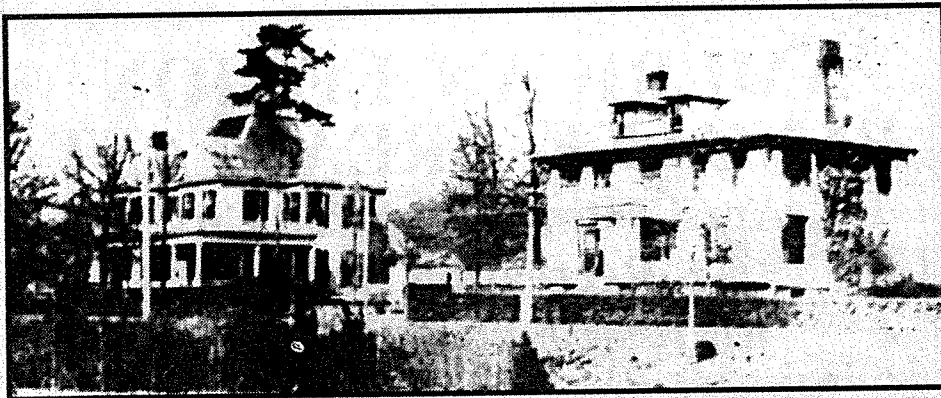


**LEDLOW  
MASONRY  
SUPPLY**  
Sales  
&  
Delivery



- Varieties Of Brick •
- Block •
- Fire Brick •
- Dampers •

sis  
tak  
wil  
stu  
lif  
Bil  
ill  
per  
the  
fur  
for  
the  
is  
cir  
co  
lif  
wi  
O  
ca  
hi  
in  
le  
ti  
in  
ar  
w  
C  
th  
fi  
re  
d  
C  
b



The Rennie House (left) and the Thompson-Iola Roberts house were constructed for the first presidents of the Pell City Manufacturing Company (later Avondale Mills). Both houses were constructed shortly after the beginning of this century and torn down to make way for the Colonial Bank building in the 1970's.



degree in administration, has had an active educational background and supplemented with a life in aviation. His flying career started in 1959, later serving over 20 years in Naval Aviation. Ted had the opportunity of flying "Bear Bryant" for over 12 years. Contributing many years of work and time Ted grew from flight instructor to part owner, president and general manager of Dixie Air Inc. in Tuscaloosa. When the position at St. Clair County Airport became available, Ted saw it as a rare opportunity in disguise.

line of photography including portrait, aerial, and advertising full color brochures. Too many times, we are accustomed to having conveniences close by, we just take them for granted. Take full advantage of St. Clair County Airport, it is here for you. Our goals are to promote the growth of the airport and to enhance the familiarity with our local people. Any groups or associations that would like Ted Jones to come and speak on behalf of the airport just give us a call or come by... the coffee is always on! ■



*Ted Jones, airport manager.*

---

## **Pastor's Corner** *Continued From Previous Page*

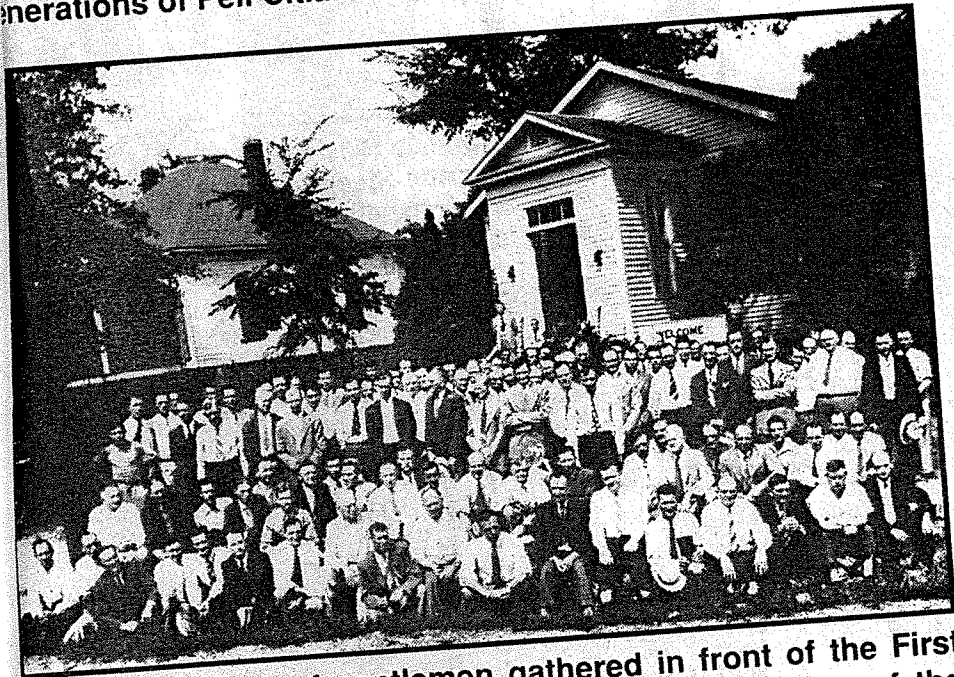
"Poems are made by fools like me. But only God can make a tree."

It is well for Christian teachers to remember that programs are made by finite men, but only God can save a soul of a student and cause him to grow in spiritual things. Even so, it is through imitation of the good man that students also become trees planted by the river of water. ■

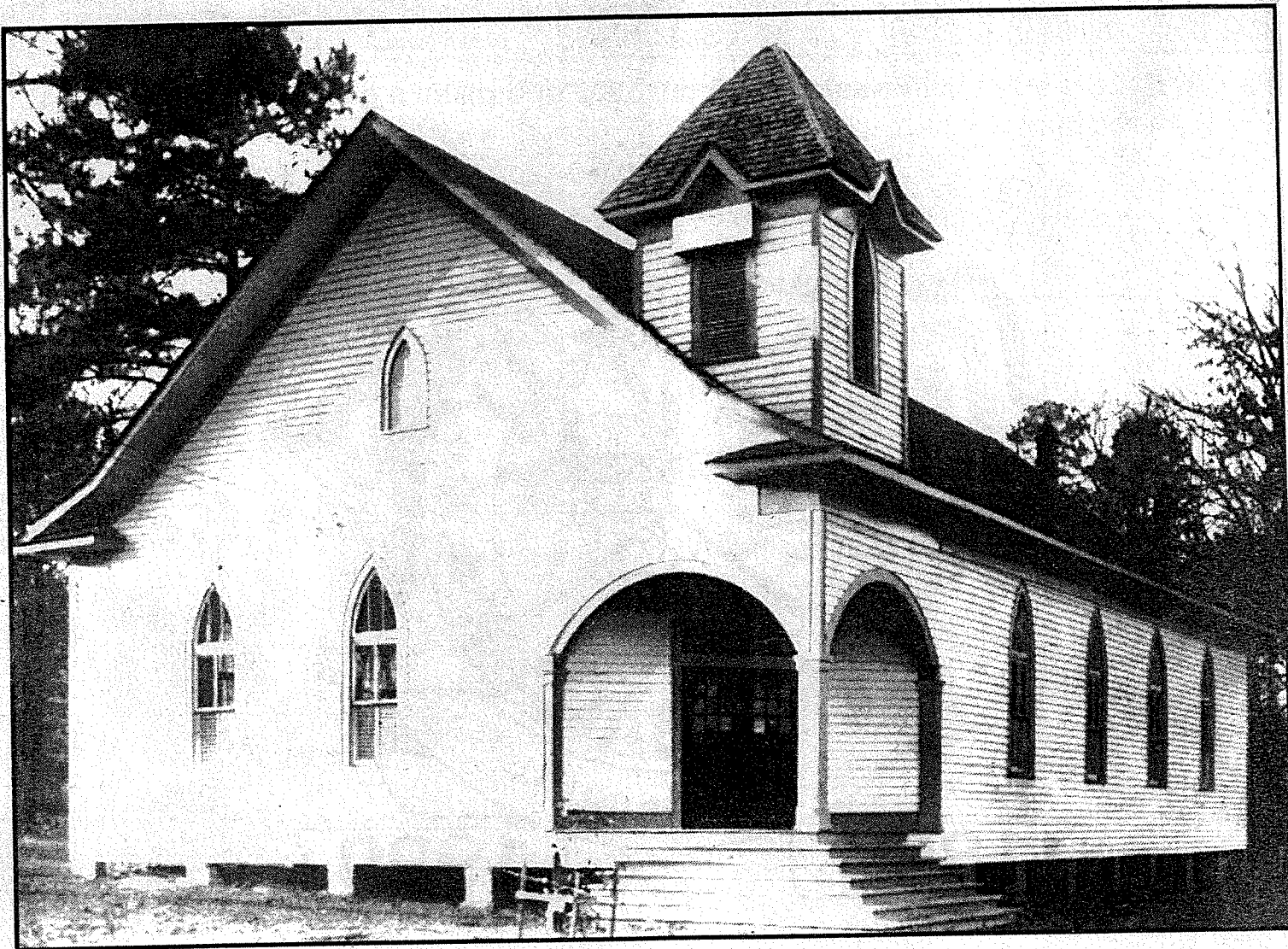
Th  
lo  
So  
Pe  
W  
M  
Ha  
ge

Thi  
Ba  
Ba  
ga  
ga  
me

A group of distinguished Alabamians gathered to honor Miss Roberts on the day the name of the South St. Clair Elementary school was changed to honor her. (Left to Right) Roy Mann, Otis Perry, A.T. Winkler, Lurleen B. Wallace, Governor George C. Wallace, Judge Hoyt Hamilton, the always elegant Miss Roberts, J. Fouts, Sam Burt, Edwin Holladay, Hugh H. Williamson and Harold King. Miss Roberts taught and disciplined four generations of Pell Citizens.



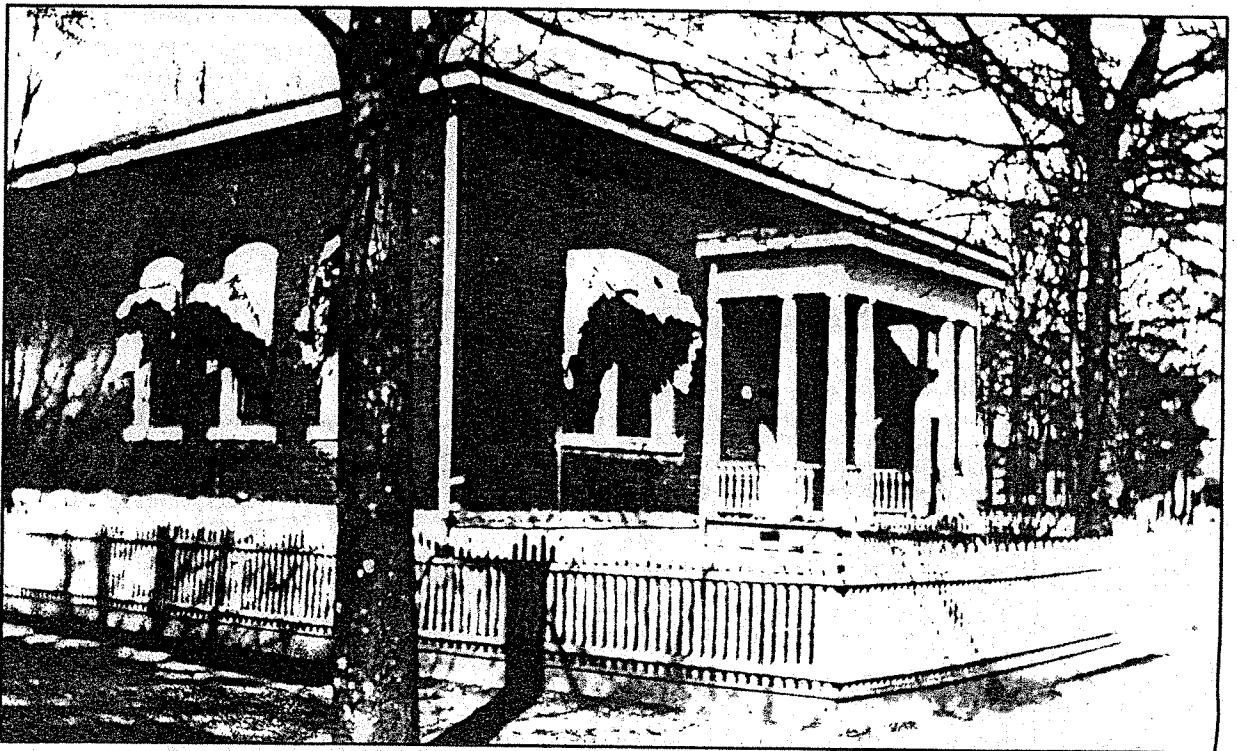
This large group of gentlemen gathered in front of the First Baptist Church around 1950. In those days, the men of the Baptist, Methodist and Wesleyan Methodist churches would gather for joint meetings in months that had a fifth Sunday. The gatherings promoted community relations. How many of these men can you identify?



**The Wesleyan Methodist Church (now Bible Methodist) was located on the corner where Jack's Hamburgers now stands. This building served from 1916 until 1965.**

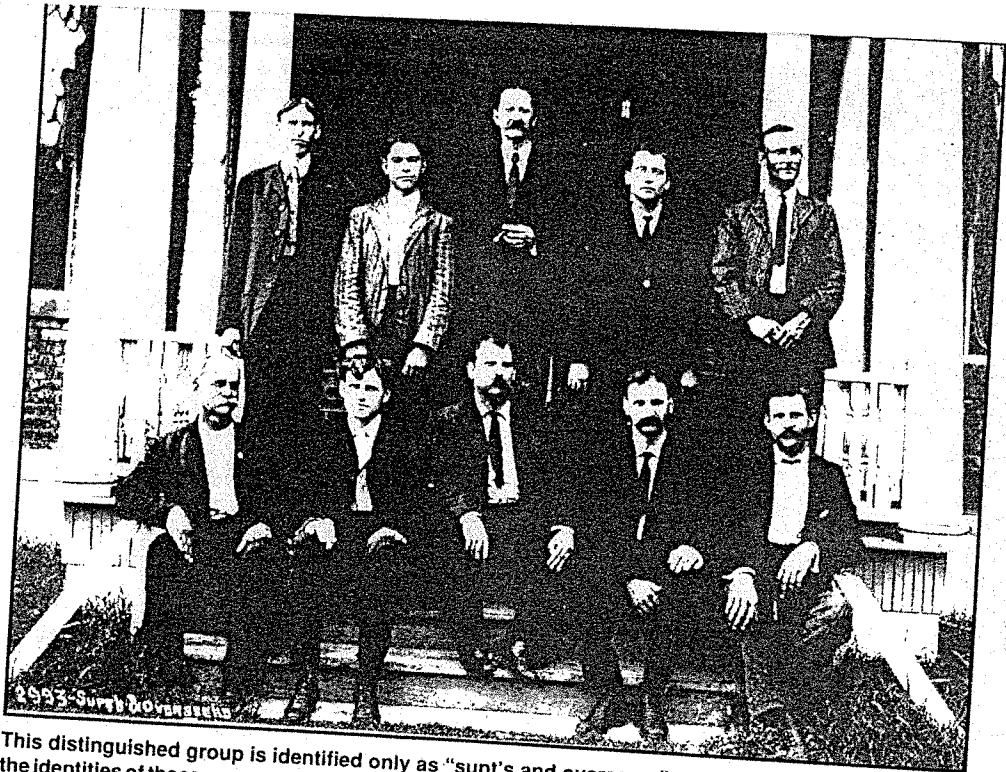


## Special Bell City Centennial Edition



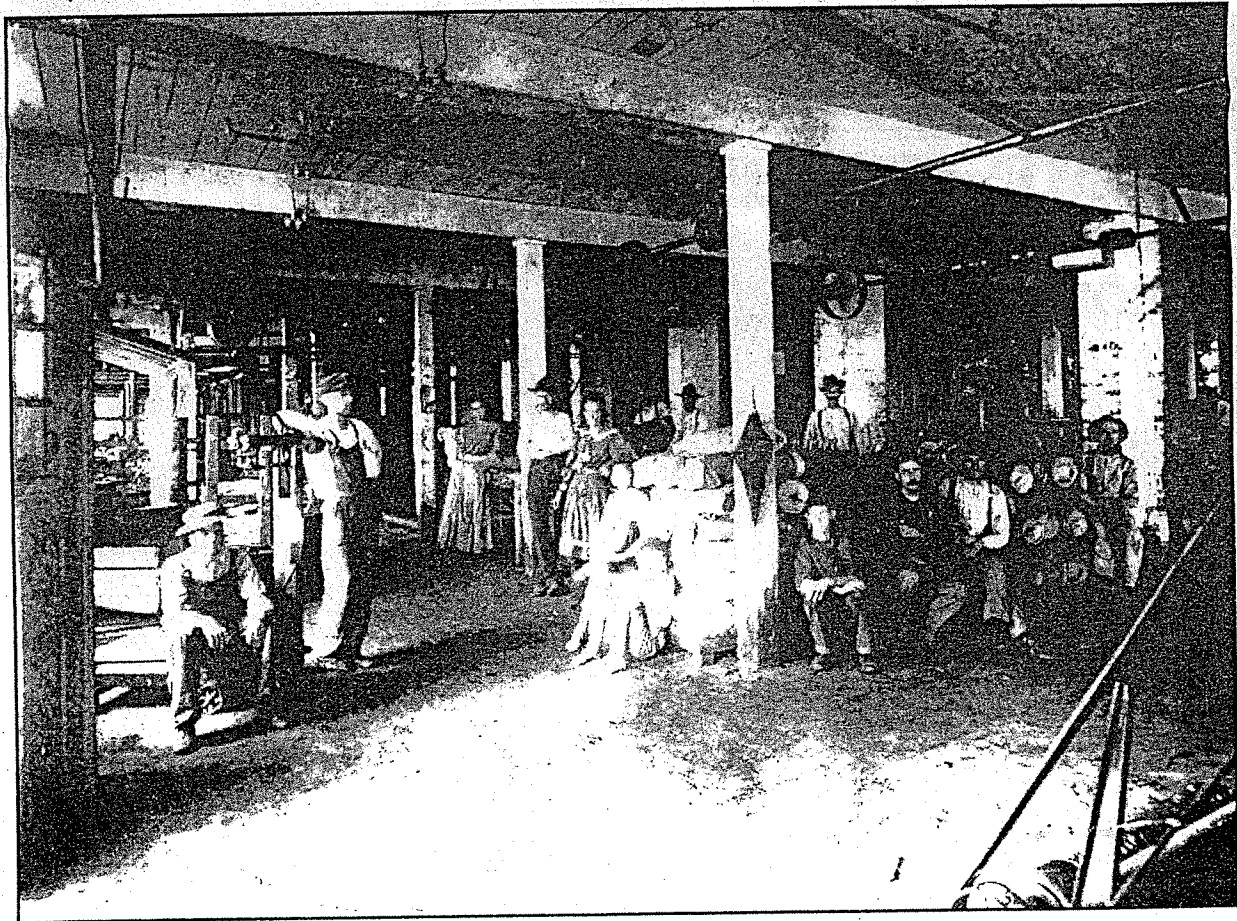
This view of the Avondale Mills office building, complete with picket fence and striped awnings was made about 1905.





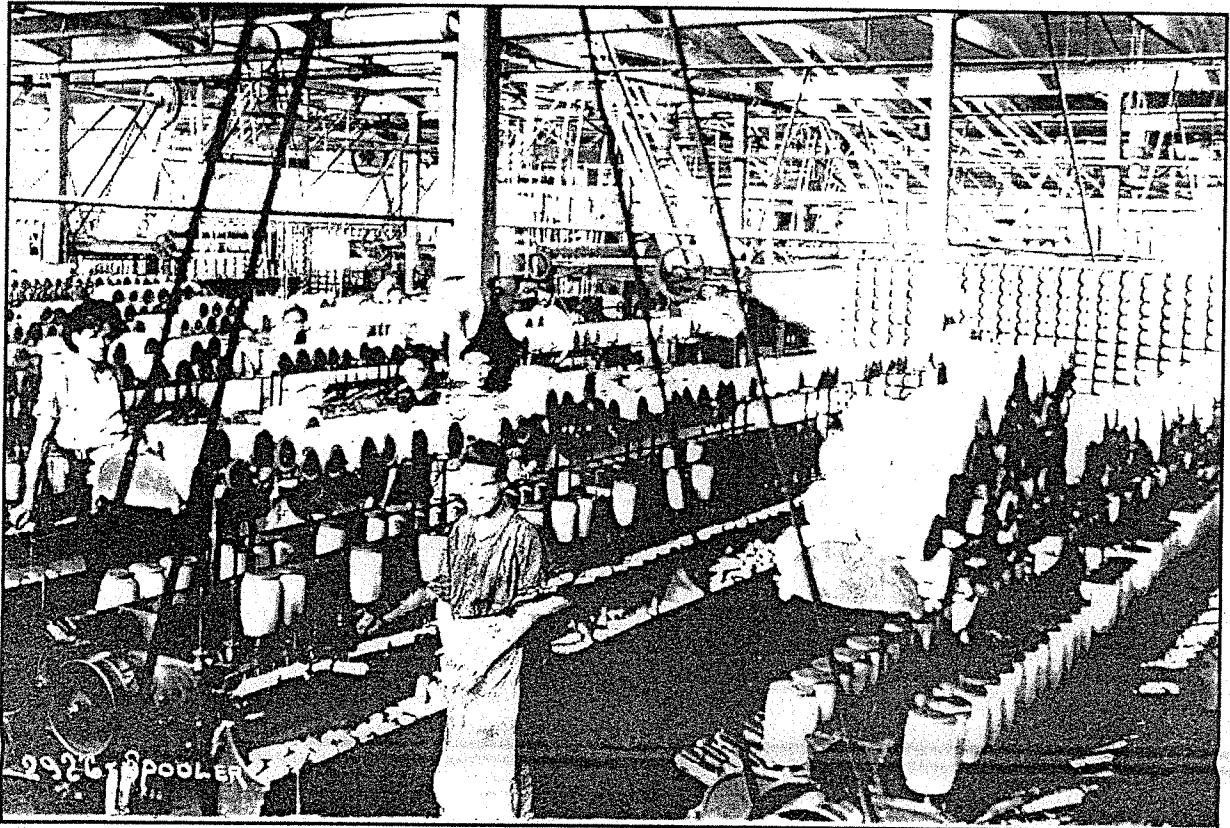
This distinguished group is identified only as "supt's and overseers" of the cotton mill. If you know the identities of these men or the year the picture was taken, please contact Guin Robinson at Avondale Mills. We believe the picture was taken about 1909.

This view of workers in the mill cloth room was made about 1909 and shows the belts and pulleys that ran the machines powered by steam. Note the barefoot boys in the front of the picture, this was before child labor laws were passed.

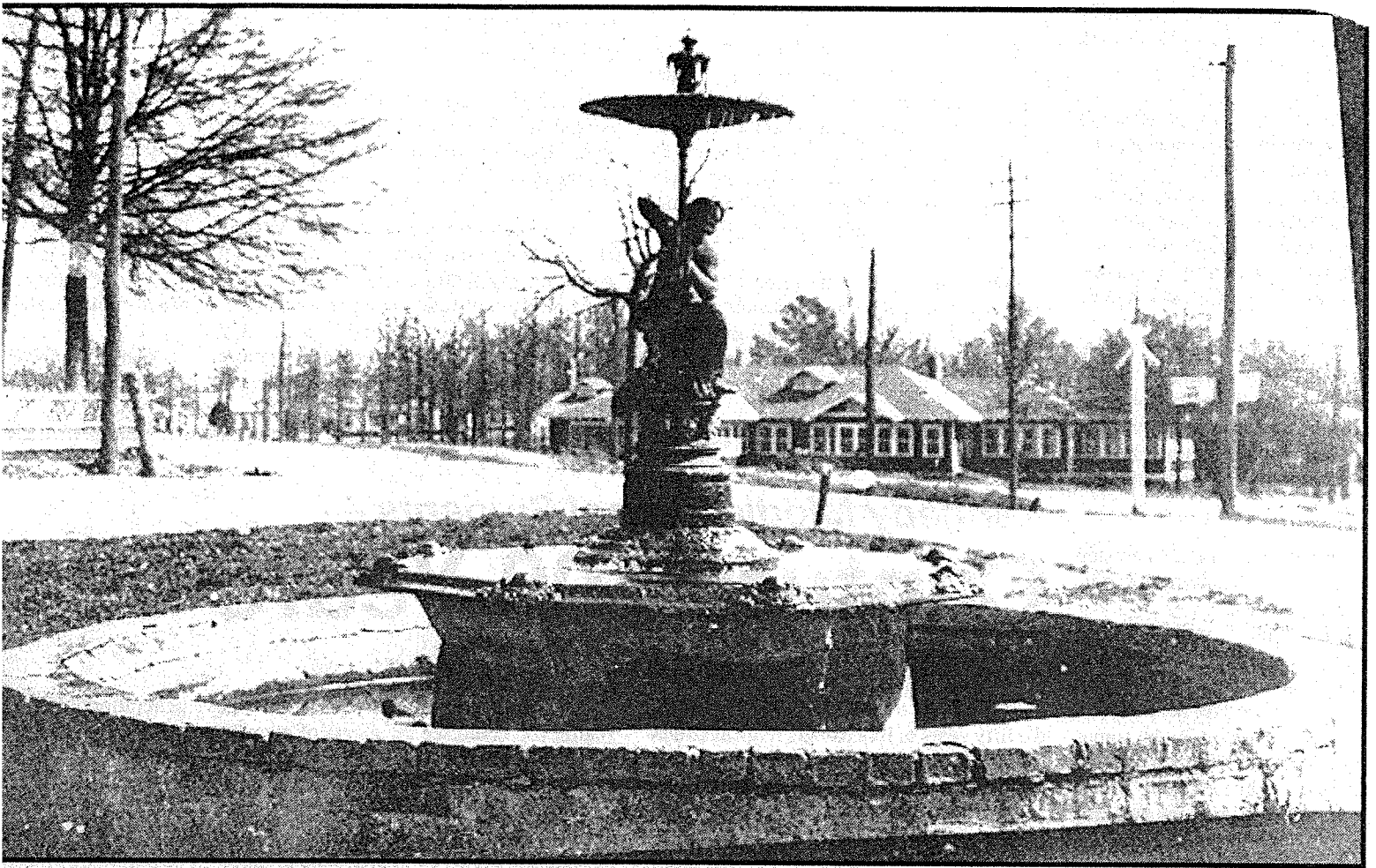




# Special Bell City Centennial Edition



This view of the spool room at the mill was made about 1900 and gives a good view of how most Bell City...



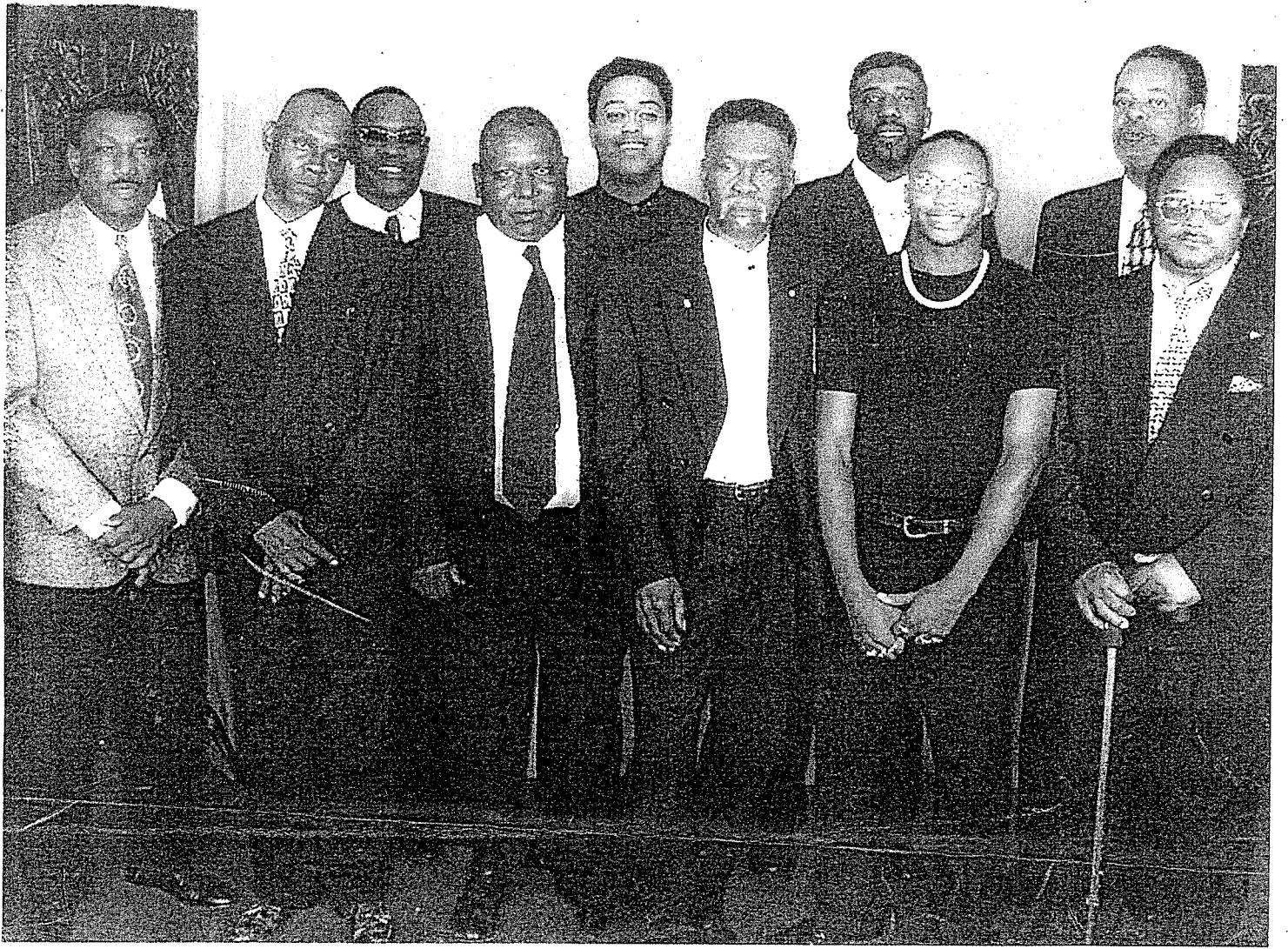
**s fountain stood in the small triangle park on Comer Avenue, just across from the Avondale Mills  
ranchise. In the background is the Avondale Clubhouse. The picture dates from around 1910. One of the  
goals of the Pell City Centennial Commission is to restore this fountain and the surrounding park. Avondale  
Mills and Gold Kist have committed their support but more is needed. The fountain was a gathering place  
in the summer and the commission hopes it will become a focal point for the Centennial Celebration.**



### *Class O '47 To Hold Reunion*

Members of the Class of 1947, Pell City High School (pictured above) will hold a class reunion Saturday night, July 30, at The Recreation Center. Pictured in this 1947 class photo are the following (girls listed by their maiden names). Front row, from left: John C. "Poodle" Williams, Lizzie Bell Watson, Mary France Hardy, Bobbie Jean Meehan, Ruth Brown, Mary Lee Kendrick, (Unidentified), Joy Bradshaw, Faye Rich, Mary Hugh Mathis, Mary Nell Lonergan, Lois Howard, Bobbie Henderson (deceased), Peggy Pruett, and Norman Smith (deceased). SECOND ROW, from left: Walter Tucker, Kitty Jean Smith, Julia Tooker, Pauline Pambro, Elsie Hollis, Marie Tomlin, Martha Walker, Katherine Cosper, Polly

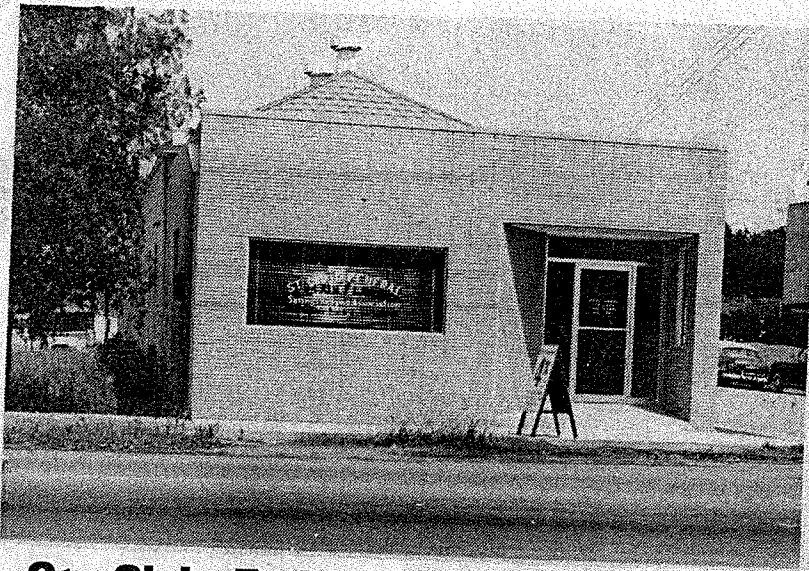
Nixon, Dan Whitten, Bernice Patterson, E.H. Childs, principal (deceased), and Jack Stewart. THIRD ROW, from left: Ralph Reeves, Charles "Buck" Smith, Bob Bain, Eddie Gossett, Clara Faye Brazier, Viola Barber, Evelyn Turner, Lorene Gambrell, Bertie Lou Smith, Mary Carolyn Hammett (deceased), Ruth Nelson, Mary Sue Brown, Rose Machovec, Gilbert Pope, and Jonas Laker. FOURTH ROW, from left: Sidney Partridge, Bill Brown, Bill Jackson, A.C. Morrow (deceased), Ted Perrin, Ed Henson, (unidentified), Howard Smith, Don Bain, Johnny Turner, Jack McCullough, Gerald Mahaffee, Ervin Thompson, Jr., Hamilton Morris and Floyd Adams, Jr.



**ST. CLAIR FEDERAL**

# ***“Your Family Fin***

## **36 Years Of Progress**



**St. Clair Federal Savings & Loan  
Cogswell Ave.  
1959**

**Chartered  
Opened Fed  
with Ass  
\$215,800**



**1993 St. Clair Federal Main Office  
308 Martin St. N. Pell City**

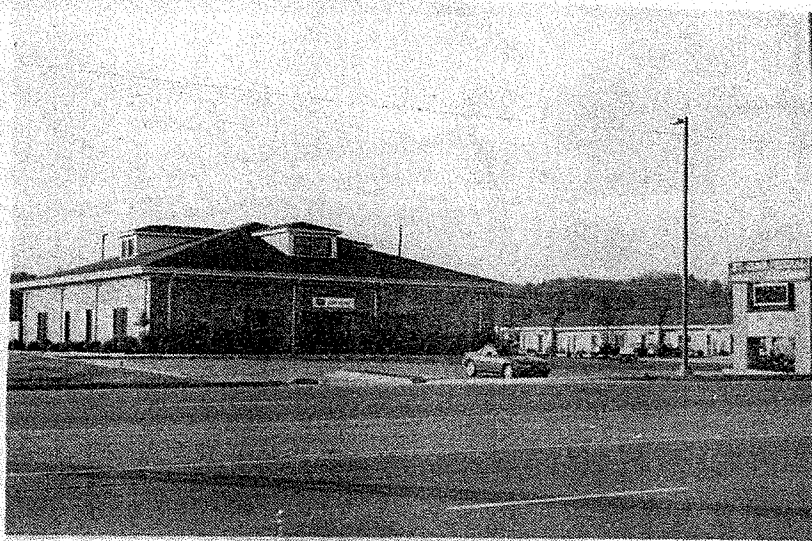
**As of Fiscal  
Sept. 30,  
\$86,192,**

# SAVINGS BANK

## Financial Center"

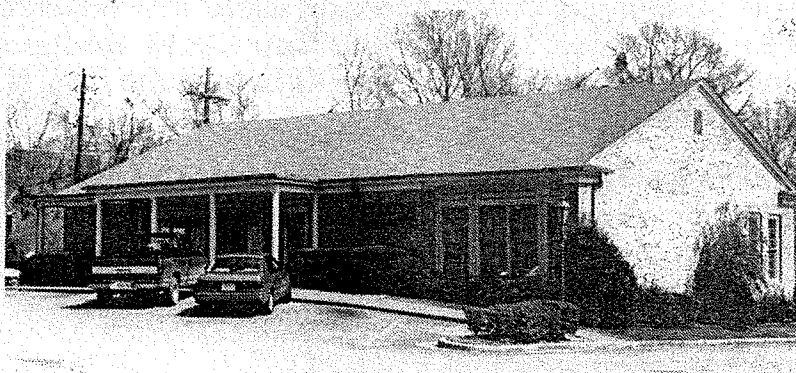
### In St. Clair County

1956  
1957  
ts of  
00



**Moody Branch**  
**2301 Moody Parkway**

Year  
1993  
80



**Springville Branch**  
**545 Main St.**

