



Presents
The
PeLL
MeLL
OF
1941
PeLL City,
ALABAMA

HT

DEDICATION



It is in keeping with the theme of this book that we dedicate the 1941 Pell Mell to one whose ideas trend toward friendship for and interest in every phase of student life; to one whose independence of spirit and personal example of high integrity have inspired those who are her fellow workers; to one who works hard and plays hard, who vibrates with energy in whatever she is doing.

For four years you have worked here to broaden the scope of student activities in our school; for four years you have held the position as the particular guide of the group of students who now are seniors; for four years you have encouraged us to learn the arts of typing, shorthand, bookkeeping, and good business principles.

As a token, therefore, of the high place you have in the hearts of the staff members and of the seniors, we, the Pell Mell Staff, dedicate our 1941 edition to you,

Julia Bazemore.

PCHS FACULTY

A TRIBUTE

We take this opportunity to offer a tribute from the student body to Mr. Moore for the splendid work he has done during his six years of service at Pell City High School. He has with constant zeal held before us high ideals of living, and both in classes and in dramatic and music activities has tried to teach us to appreciate always what is best in life. Combining high standards of conduct with a wise understanding of the hearts and minds of young people, he has always been ready to help us with praise or blame at the times when we needed one or the other. All of these he has done without counting the cost to himself.



J. ROGERS MOORE
Principal

FACULTY

FIRST ROW:

Frances Taylor	B.S., University of Alabama	Physical Education
Julia Bazemore	A.B., Howard College	Commercial Subjects
Mrs. J. Rogers Moore.....	B.M., Howard College	Music
Mrs. J. W. Locke	B.S., Alabama College.....	Vocational Home Economics

SECOND ROW:

Frances Johnson	A.B., Howard College.....	Junior High English
Virginia James	A.B., Alabama College	Senior High English
Mrs. Frank E. Hines.....	A.B., University of Alabama.....	Junior II
Mary Lou Snead	A.B., University of Alabama.....	Junior I

THIRD ROW:

J. W. Locke.....	B.S., Mississippi State.....	Vocational Agriculture
Herman Roberson	A.B., M.A., University of Alabama	Physical Education
Shipley Johnson	A.B., University of Alabama	Social Studies
Carl Gentsch	B.S., University of Alabama	Mathematics



STUDENT COUNCIL



Ogletree, Matthews, Smith, Bradshaw, Holladay, Dickey, Lovell, Compton, Brown, Hardwick,

OUR STUDENT GOVERNMENT

We govern ourselves by electing this group, our Student Council, which is composed of a president, a vice-president, and a secretary, elected by the student body, and a representative from each one of the seven classes. This group, by ever pursuing our belief in democratic school and community government, is responsible for the coordination of extra-curricular activities in our school.

OFFICERS

President, Edwin Holladay

Vice-President, Martha Dickey

Secretary, Frances Bradshaw

REPRESENTATIVES

Sr. III—Hub Lovell

Sr. II—Martha Lou Fagan (not shown)

Sr. IA—Florence Compton

Sr. IB—Aaron Smith

Jr. III—Jean Matthews

Jr. IIA—Bill Brown

Jr. IIB—Dorothy Ogletree

Jr. II—Paul Hardwick



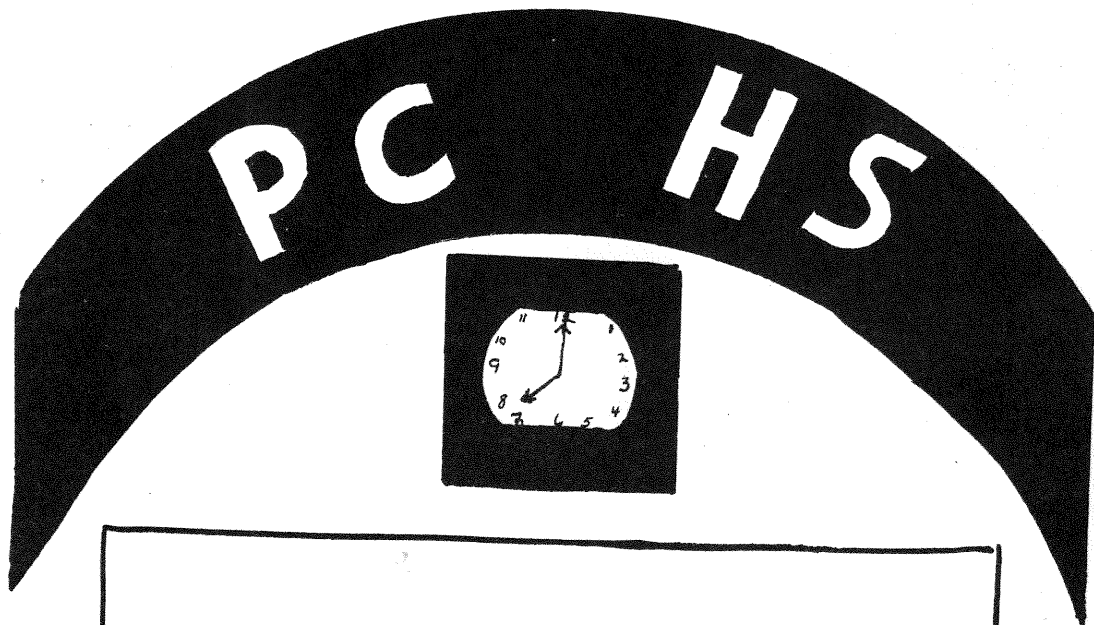
TRUSTEES

LEFT: Mr. Bob Alverson

Dr. Frank Stitt

Mr. Wasson Harmon

CLASSES



H.T.

SENIORS

HAROLD WILLIAMS

President

Annual Staff, Football 3, Manager 4, Letter Club 4, Commercial Club 3-4, F.F.A. 2-3, Who's Who 4, C.C.C. Staff.



CLEMMIE HENDERSON

Vice President

Glee Club 1-2-3, F.H.A. 2-3—Sec. 3, Dramatic Club 1-2-3—Pres. 4, Program Committee 1-2-3, Annual Staff, Honor Roll 1-2-3-4, Handicraft 3-4, Sec. 4, Commercial Club 4, Typing Representative 3.

ELSIE RUTH TRUITT

Secretary

Honor Roll 3, F.H.A. 4, Reporter 2, President 3, 4-H Club-President 1, Commercial Club 4, Glee Club 1-2-3-4, Dramatic Club 3-4, Home Room-Sec. and Treas. 1-4, Sports-crafter 3.



HERBERT LOVELL "Hub"

Council Representative

Football 1-2-3, Alt. Cap 4, F.F.A. 2, Dramatic Club 4, Letter Club 2-3—Pres. 4.

Deceased

Elsie Ruth Truitt (Buried) near Ala, Sept. 14, 1923

SARA JO HARDWICK

Home Room Pro. Com. Chair.

Glee Club 1-2-3, Dramatic Club 1-2-3-4, Honor Roll 3, F.H.A. 2-4—Vice President 3, Council Representative 1-2, Sports-crafters Club 3.



VIOLET BASWELL

"Tender Green"

Assembly Program Rep. 4, Ragland School 1-2, F.H.A. 3, Commercial Club 3—Vice Pres. 4, 4-H Club 1-2-3—Secretary 3.

Deceased
JULIAN BAIN

Letter Club 2-4, Dramatic Club 2, F.F.A. 2, Glee Club 2, Class Pro. Com. 2, Who's Who Contest 4.



Deceased
BRADFORD BARBER "Brad"

Coal City-Jr. High, F.F.A. 1-2-3, District Pro. Com. 1-2, Pro. Com. 3, Home Room Pro. Com. 1.

*Julian Bain
Pell City, Alabama
March 2, 1922*

L. N. BARBER "Bob"

Letter Club 2-3-4, Football 1-2-3-4, F.F.A. 2-3—Sec. 4, F.F.A. Basketball 2-3.



LOUISE BELL

Gaylesville High 1-2-3, F.H.A. Club 1-2-3, Beta Club 1, 4-H Club 1.

*Louise Bell
Casonville, Ala
Jan. 15, 1922
Bessemer.*

Deceased

SENIORS

FRED BOWLIN "*Bessie*"

Coal City 1, Glee Club 2-3-4, Dramatic Club 2-3-4, Class President 2, Council Rep. 3, Annual Staff, Commercial Club 2-3-4, Honor Roll 3-4, May Day Honor Court 3, F.F.A. 2, C.C.C. Staff 4.

DeceasedHAZEL BROWN "*Runt*"

Cropwell School 1, Glee Club 2-3, F.H.A. 2-3, Commercial Club 3-4, 4-H Club Pres. 1, Honor Roll 3, Handicraft 4.

CHARLOTTE DAVIS "*Sil*"

Glee Club 1-2-3-4, F.H.A. 2-3, Dramatic Club 2-3-4, 4-H Club 1, Sportsrafter Club 3.

DeceasedMARTHA DICKEY "*Mot*"

F.H.A. 2-3-4, May Day Honor Court 3, Sec. of Student Body 3, Vice Pres. of Student Body 4, Commercial Club 4, Honor Roll 1-2-3-4.

ROBERT DRUMMONDS

Minor High School 1-2, Odenville High 3, Pell City High 4.



CHARLES DUNAWAY

F.F.A. 2.

JEAN HAMMETT

Debate Club 4, F.H.A. 2, Honor Roll 1-2-4, Assembly Representative 1.



BERTIE HARRISON

F.H.A. 1-2, 4-H Club 1, Glee Club 1.

EDWIN HOLLADAY "*Edard*"

Class Pres. 3, Student Body Pres. 4, Annual Editor, Football 2-3—Capt. 4, Glee Club 2-3, Dramatic Club 3-4.

CHARLES EDWIN HOYLE
"*Bittie*"

F.F.A. 2-3—Vice Pres. 4, Glee Club 2-3, F.F.A., Basketball 4, Commercial Club 4.

Deceased

SENIORS

ALVIN HURST "Shorty"

F.F.A. 1-2-3, Basketball 1-2-3, Letter Club 1-2-3, Football 1-2.

deceased



HELEN JACKSON

Glee Club 1-2-3-4, Commercial Club 2-3-4, Dramatic Club 1-2-3-4, May Day Court 3, C.C.C. Staff, Annual Staff, Handicraft 3-4.

*Helen Jackson
Bell Co., Va.
Feb 5, 1923*

MILDRED JOHNSON

"Mickey"

F.H.A. 2-3, Glee Club 1-2-3-4, Sportsrafter Club 3, 4-H Club 3-4, Dramatics 2.



GARLAND JUSTICE "Gart"

F.F.A. Club 1-2-3.

OLIVER KENDRICK

"Windy"

F.F.A. 3, Letter Club 3-4, Football 3-4, Annual Staff.



PAUL KERLEY "Bedmaker"

F.F.A. 2-3-4.

NATHAN LEWIS "Buckwheat"

Football 1-3-4, Letter Club 1-3-4, F.F.A. 4, Commercial Club 3-4, Traveler's Club President 2, Vice President 3.

deceased



ROGER NEWTON

Odenville High School 1-2, Football 4, Dramatic Club 4.

VIRGINIA OGLETREE

"Jenny"

F.H.A. 3, Reporter 2, Vice Pres. 3, Glee Club 1-2-3-4, Dramatics Club 2-3, Sec. and Treas. 4, Class Pres. 1.



VIOLA PHILLIPS "Violie"

Glee Club 1-2, F.H.A. 1-2-3, Sportsrafter Club 3.



MILTON ROBERTSON

"Mink"

Glee Club 1-2-3-4, F.F.A. 1-2-3-4, F.F.A. Basketball 1-2-3-4.

SENIORS

MAGGIE ROE

F.H.A. 1, Commercial Club 4, 4-H Club 1, Sportsrafters 4.



SARA SCOTT "Red"

F.H.A. 2, Treas. 3, Class Program Committee 2-3-4, Commercial Club 3, Pres. 4, Honor Roll 1-3, 4-H Club Vice Pres. 1, Sportsrafter Club 3-4, Dramatic Club 2-3-4, Glee Club 2-3, C.C.C. Staff 4.

MATTIE FLORENCE SILVERNAIL "Flo"

Glee Club 1-2-3, F.H.A. 2, 4-H Club 1-2-3, Dramatics Club 1.

*Mattie Florence Silvernail
Pell City, Ala.
August 13, 1922*



deceased

TOMMIE HELON SKELTON

F.H.A. 2, Glee Club 1-2-3-4, Letter Club Cheerleader 2-3-4, Sportsrafter Club Pres. 3, Dramatic Club 2-3, Reporter 4, Who's Who 1-2-3-4, Commercial Club 4, Annual Staff.

*Tommie Skelton
Pell City, Ala.
March 4, 1923*

CHARLES SMITH "Busy"

Commercial Club 3-4, F.F.A. 2-3, District Reporter 4, Basketball Team 3-4.

*Charles Smith
Croswell, Ala., Rt. #
May 19, 1922*



RANDELES SMITH "Runt"

F.F.A. 2-3-4.

Runt died Aug 4, 1929

deceased

LUTHER WILLIS "Luke"

F.F.A. 2-3, Pres. 4, Glee Club 2-3-4, Dramatics Club 3-4.

*Luther Willis
Croswell, Ala.
April 20, 1922*



SMITH WILLIS "Smitty"

F.F.A. 2-3-4, Glee Club 2, Basketball 3-4.

LENA MAE WALKER "Dimples"

Honor Roll 1-2-3-4, F.H.A. Reporter 2, 4-H Club Group Captain 4, Commercial Club 4, Glee Club 1, Dramatics Club 1-2-4, Home Room Program Com. 3, Sportsrafters 3, 6th Place International Civitan Winner 3, Oratorical Contest 1-2.

*Lena Mae Walker
Pell City, Ala., Rt. # 2
Dec 27, 1922*



WILLIAM WINDSOR "Ironhead"

Football 1-2-3-4, Letter Club 2-3-4.

FLOYD WYATT "Dovie"

Glee Club 1-2-3, Letter Club 2-3-4, F.F.A. Club 3, 4-H Club 1.

deceased



Dropouts

Deceased

*Naomi Yarbrough
Bob Phillips
Blanche Robertson
Herbert Lee Wright*

JUNIORS



J. T. Bowman, *President*
 Heflin Smith, *Vice-President*
 Helen Kerr, *Secretary*

Martha Lou Fagan, *Council Rep.*
 Katherine Buckner, *Program Chr.*
 Nellie Ruth Brown, *Ass. Prog. Rep.*

Fannie Lou Abbott
 Claxton Alexander
 Guy Alley

Hoyt Alverson
 Eunice Ball
 June Bannister

Calvin Barber
 Frances Bradshaw
 Nima Burns

Emmaline Canada
 Robert Castleberry
 Gerome Chambers

Maurice Clinkscales
 Bobbie Cospier
 Christine Cowley

Mary Crance
 Juanita Davis

JUNIORS

Betty Dunning
 Buddy Funderburg
 Joe Gore



Carey Harris
 Margaret Holladay
 Charles Huffstutler



Carrie Hunter
 Bill Jones
 Johnie Kilgroe



Kathleen Kilgroe
 Wesley Mulkey
 Jack Partridge



Alice Robertson
 Hilda Robertson
 Ruth Robertson



Lois Simms
 Delbert Smith
 L. C. Smith



Cora Lee Tate
 Onnie Jean Whitten
 Anne Wilson



Dot Youngblood



SENIOR I - SECTION A



OFFICERS

President

Euna Creswell

Vice President

Mary Lewis

Secretary

Elaine Gray

Home Room Teacher

Mrs. J. W. Locke

FIRST ROW:

Nancy Funderburg
Edith Holmes
Christine Johnson
Rachael Brazier
Charlotte Hazelwood
Euna Creswell
Elizabeth Hollis
Abbie Ruth Hull
Marie Keahey
Lynette Fincher

SECOND ROW:

Gera Holland
Elaine Gray
Rozell Golden
Eloise Davis
Florence Compton
Hazel Grimes
Madeline Lovell
Allene Hayes
Mary Lewis
Mildred Hullett
Mozell Lewis
Margurete Hannah

THIRD ROW:

Cecil Gray
Willie Goodgame
Marshall Champion
J. B. Crump
Aaron Lanier
John Savage
Henry Ford Canada
James Harold Beavers
Hansel Harmon

SENIOR I - SECTION B

OFFICERS

President

John W. Singleton

Secretary

Reeves Truitt

Vice President

Juanita Spruiell

Home Room Teacher

J. W. Locke

FIRST ROW:

Louise Watson
Christine Thornton
Louise Reeves
Martha Scott
Patty Nell Stine
Mary June Smith
Bertha Frances Smith
Ruth Robinson
Jim Tom Turner
Eugene Willis

SECOND ROW:

Frances Smith
Mary Lynn Starnes
Donnis Rickey
Juanita Spruill
Esther Mae Adams
Lois Stewart
Edith Shaddix
Nadene Willis
Rozenia Walker
Inez Newton
James Mize

THIRD ROW:

Odelle Richey
Joseph Maples
Reeves Truitt
Adrian Williams
Otto Walker
Pete Nixon
Joe Machovec
Willard Howard
John Savage
Aaron Smith
John W. Singleton
Williard Whitten



JUNIOR III CLASS



OFFICERS

President

Donald Bain

Vice-President

Joe McKnight

FIRST ROW:

Christa Jane Cornelius
 Lillian Hamilton
 Elzie Sweat
 Yvonne Morris
 Virgie Lee Walker
 Jean Matthews
 Emma Jean Smith
 Eldridge Partridge
 Stanley Maddox
 Brooks White
 Howell Henderson

Secretary

G. W. Purdy

Home Room Teacher

Mr. Roberson

SECOND ROW:

Ida Sue Huston
 Hazel Vinson
 Betty Taylor
 Jessie Mae Mason
 Winifred McKnight
 Margaret Williamson
 Delilah Walker
 Gladis Tomlin
 Joyce Stewart
 Marion Buckner
 Frank Kerley
 G. W. Purdy

THIRD ROW:

Charles Rich
 Robert Gravette
 Jack Stewart
 Joe Vines
 La Rue Dean
 Joe McKnight
 Donald Bain
 Willie Simon
 Jack Tucker
 R. V. Sweatt
 Kenneth Barber
 Theron Keahey
 Ralph McKelvey
 Louis Byers
 Billy Singleton

JUNIOR II - SECTION A

OFFICERS

President
Leonard Glidewell

Vice-President
Bobbie Gunter

Secretary
Martha Alverson

FIRST ROW:

Ruby Lee Castleberry
Katheryn Howard
Virginia Harmon
Dimples Hullett
Pauline Burnham
Cora Lee Crowe
Mary Sue Ayers
Martha Alverson

Class Representative
Bill Brown

Program Committee
Lurlin Bain

Home Room Teacher
Miss Johnson

SECOND ROW:

Herman Hardwick
Cecil Farrell
Mae Bell Ball
Flora Mae Hestley
Bertie Mae Hare
Florence Braden
Jerrel Andrews
Arber Duren Dean
Wallace Brazier
Arthur Ray Baswell

THIRD ROW:

James Maples
Clifford Willis
Leonard Glidewell
Ray Bowman
Floyd Barber
Albert Jones
Jonas Luker
Bobby Gunter
Ormond Hare
Bill Brown
Clyde Lanier



JUNIOR II - SECTION B



OFFICERS

President

Frank Stitt

Vice President

Ruth Simpkins

Secretary

Dorothy Nell Splawn

FIRST ROW:

Dorothy Graham Ogletree

Helen Parker

Margaret Pope

Raymon Shore

Norman Smith

Willodean Walker

Ruby Lee Williams

Evie Dee Streety

Harvey Robertson

Reporter

Alma Shaddix

Council Representative

Dorothy Graham Ogletree

Rep. to Assembly Com.

Nelda Jean Patterson

SECOND ROW:

Dorothy Nell Splawn

Marguerite Smith

Margaueuite Smith

Evelyn Smith

Ruth Simpkins

Mary Catherine Smith

Nelda Jean Patterson

Ethylan Smith

Alma Shaddix

Martha Ann Stewart

THIRD ROW:

Jimmie Whitten

Frank Stitt

James Starnes

Thomas Watson

James Taylor

Tommy Newton

Kenneth Tucker

Aulton Ritch

W. C. Sullivan

JUNIOR I - SECTION A

OFFICERS

President

Elouise Wilkins

Secretary

Katherine Gibbs

Vice President

Ruth Elaine Robertson

Home Room Teacher

Miss Snead

FIRST ROW:

James Hull
R. A. Carreker
Charles Fincher
Helen Adams
Christine Golden
Mary Elizabeth Fagan
Edwanda Cornelius
Martha Griffith
Lois Howard
Henrietta Beavers

SECOND ROW:

Willard Gallegly
Clarence Bates
Josephine Harmon
Katherine Gibbs
Elizabeth Bowman
Doris Cooper
Wenona Fincher
Bill Holly
Horace Gasaway
Charles Alexander

THIRD ROW:

Eldridge Fincher
C. J. Goodwin
Grady Echols
Billy Clayton
James Fondren
William Kilgroe
Charles Goodwin
James Neil Ellis
Paul Hardwick
Ernest Bradshaw
Not Pictured—Estha Mae Goodwin



JUNIOR I - SECTION B



The Junior I class is almost double in size this year. Though the class has still one home room organization and one set of officers, it has been necessary to divide the members of the class into two sections for class work.

FIRST ROW:

Gladys Milam
Lillian Weldon
Kitty Jean Smith
Maxine McKnight
Ruth Elaine Robertson
Mary Elizabeth Martin
Hardy Watson

SECOND ROW:

Helen Sweatt
Christine Welch
Helen Neighbors
Velma Partridge
Thelma Thompson
Mary Ruth Wright
Eloise Wilkins
Doris McKuhen

THIRD ROW:

Jim Milam
Billie Masters
Jimmie Reeves
Chester Whitmire
James Ritch
J. W. Stephens
Marvin Wyatt
Charles Robertson
Dewey Partridge
Edward Smith



H.T.

F H A CHAPTER



SECOND ROW: Walker, Cospers, Bannister, Burns, Robertson, Holladay, Buckner, Smith, Abbott, Hazelwood, Hollis, Hull.
 FIRST ROW: Hayes, Davis, Hardwick, Starnes, Phillips, Davis, Shaddix, Stine, Tate, Robertson, Ball, Gray, Louis, Mrs. Locke.
 THIRD ROW: Holland, Scott, Creswell, Smith, Reeves, Dickey, Lewis, Truitt, Brown; Hullett; Kilgroe, Wilson, Robertson, Smith.

OFFICERS

<i>President</i>	<i>Secretary</i>	<i>Reporter</i>
Margaret Holladay	Katherine Buckner	Hilda Robertson
<i>Vice-President</i>	<i>Treasurer</i>	<i>Advisor</i>
June Bannister	Nima Burns	Mrs. J. W. Locke

PURPOSE

The purpose of this F.H.A. is to foster higher ideals in homemaking. To help the members to solve more satisfactorily their present home problems through use of home economics instruction; to guide the members in selecting wisely their profession or occupation; to promote scholarship and achievement among students of vocational home economics; to interest members in developing hobbies.

STANDING IN CHAPTER

FIRST DEGREE MEMBERS

Euna Creswell
 Nancy Funderburg
 Elaine Gray
 Charlotte Hazelwood
 Elizabeth Hollis
 Mildred Hullett
 Mary Lewis
 Mozelle Lewis
 Inez Newton
 Martha Scott
 Edith Shaddix
 Bertha Smith
 Frances Smith
 Mary June Smith
 Mary Lynn Starnes
 Patty Nell Stines

Rozelle Golden
 Louise Reeves
 Rozenia Walker
 Gera Holland
 Abbie Ruth Hull
 Cora Lee Tate
 Ruth Robertson

SECOND DEGREE

Eunice Ball
 June Bannister
 Nellie Ruth Brown
 Katherine Buckner
 Nima Burns
 Bobby Cospers
 Margaret Holladay
 Kathleen Kilgore
 Viola Phillips

Alice Robertson
 Hilda Robertson
 Juanita Davis
 Ann Wilson

STATE DEGREE

Martha Dickey
 Sara Jo Hardwick
 Elsie Ruth Truitt

PLEDGES

Allene Hays
 Nadenne Willis
 Louise Watson
 Christine Thornton
 Esther Mae Adams
 Christine Johnson
 Juanita Spruiell

F F A CHAPTER



FIRST ROW: Turner, Willis, Beavers, Champion, Smith, Funderburg, Whitten, Singleton.
 SECOND ROW: Holladay, Richey, Gray, Truitt, Huffstutler, Hoyle, Willis, Barber, Watson; Herman, Goodgame.
 THIRD ROW: Clinkscales, Maples, Smith, Castleberry, Hurst, Crump, Walker, Sweatt, Barber; Mize, Mr. Locke.
 FOURTH ROW: Partridge, Howard, Robertson, Lanier, Lewis, Nixon, Alverson, Smith, Barber; Savage, Black, Kilgore.

OFFICERS

<i>President</i>	<i>Secretary</i>	<i>Reporter</i>
Luther Willis	L. N. Barber	Charles Huffstutler
<i>Vice-President</i>	<i>Treasurer</i>	<i>Advisor</i>
Charles Edwin Hoyle	Harvey Watson	J. W. Locke

PURPOSE

To develop Agricultural leadership to foster a strong organization of farm boys, to develop character, train for citizenship to improve scholarship, learn to be thrifty and practice cooperation. This is an organization for boys enrolled in vocational agriculture.

STANDING IN CHAPTER

<p>FUTURE FARMERS</p> <p>Luther Willis Charles Edwin Hoyle L. N. Barber Harvey Watson Charles Huffstutler Brad Barber Alvin Hurst Charles Smith Milton Robertson Hoyt Alverson Calvin Barber Maurice Clinkscales Robert Castleberry Buddie Funderburg Bill Jones Jack Partridge John Kilgroe Randall Smith L. C. Smith</p>	<p>FUTURE FARMERS</p> <p>Edwin Holladay Guice Osborn</p> <p>GREENHANDS</p> <p>Pete Champion J. B. Crump Cicil Gray Hansel Harmon Edward Johnson Aaron Lanier Jim Lee Joe Maples James Mize Pete Nixon Willie Goodgame Odell Richey French Roe James Sargent</p>	<p>FUTURE FARMERS</p> <p>Aaron Smith Richard Taylor Reeves Truitt Tom Turner Otto Walker Willard Whitten Eugen Willis J. D. Goodgame R. V. Sweatt Willard Howard Nathan Lewis Melvin Ayers Jim Beaves Joe Bell Richard Black John W. Singleton Ferrel Burt John Savage</p>
--	---	---

COMMERCIAL CLUB



The Commercial Club was organized in 1937, with 25 charter members. New members must make at least an A or a B on typing. The club always makes at least one trip during the year and sometimes one after school is out. The CCC has been printed for the last two years and has improved very much. It has given many of the members experience in this type of work.

OFFICERS

President

Sara Scott

Vice-President

Violet Baswell

Secretary

Margaret Holliday

Advisor

Julia Bazemore

FIRST ROW:

Lena Mae Walker
 Tommie Helon Skelton
 Abbie Ruth Hull
 Clemmie Henderson
 Sara Scott
 Margaret Holladay
 Patty Nell Stine
 Helen Jackson

SECOND ROW:

Miss Bazemore
 Nima Burns
 Eloise Davis
 Elsie Ruth Truitt
 Martha Dickey
 Violet Baswell
 Maggie Row
 Hazel Brown

THIRD ROW:

Juanita Davis
 Charles Hoyle
 Harold Williams
 Fred Bowlin
 Guy Alley
 Charles Smith
 Edwin Holladay

DRAMATIC CLUB



We are really proud of our Dramatic Club this year. We have taken definite steps toward improving expression and action on the stage. Our biggest hit this year was three one-act plays—each with a different cast. Who knows but what we have several "Barrymores" in our midst.

OFFICERS

President
Clemmie Henderson

Vice-President
Martha Lou Fagan

Secretary
Virginia Ogletree

Advisor
Miss James

FIRST ROW:

Elizabeth Hollis
Elaine Gray
Martha Lou Fagan
Frances Bradshaw
Euna Creswell
Clemmie Henderson
Bertha Frances Smith
Charlotte Hazelwood
Abbie Ruth Hull

SECOND ROW:

Virginia James
Nima Burns
Virginia Ogletree
Edith Shaddix
Mary Lewis
Elsie Ruth Truitt
Charlotte Davis
Lena Mae Walker
Sara Scott
Sara Jo Hardwick
Frances Smith

THIRD ROW:

Tommy Skelton
Helen Jackson
Fred Bowlin
Patty Nell Stines
Guy Alley
Carey Harris
Reeves Truitt
James Mize
Hubert Lovell
La Rue Dean

GLEE CLUB



By combining the Glee Club and Music Appreciation, we have accomplished more this year than any year of our past history. We have appeared on various programs throughout this year and plan to end a successful year with our annual concert.

FIRST ROW:

Martha Lou Fagan
 Alma Shaddix
 Dorthey Nell Splawn
 Elezabeth Hollis
 Eloise Wilkins
 Jean Matthews
 Maxine McKnight
 Dorthy Graham Ogletree
 Emma Jean Smith
 Crista Cornealous
 Martha Griffith
 Mae Bell Ball

SECOND ROW:

Eloise Davis
 Juanita Davis
 June Bannister
 Aliene Hays
 Alice Roberson
 Elsie Ruth Truitt
 Mattie Flo Silvernail
 Edith Shaddix
 Mildred Hullet
 Ann Wilson
 Flora Mae Hesterly
 Patty Nell Stine
 Fannie Lou Abbott
 Mozell Lewis
 Katherine Buckner

THIRD ROW:

Mildred Johnson
 Virginia Ogletree
 Tommie Skelton
 Helen Jackson
 Fred Bowlin
 Milton Roberson
 Pete Nixon
 Luther Willis
 Floyd Wyatt
 Martha Alverson
 Sara Machovec
 Ruth Simpkins
 Charlotte Davis

ACTIVITIES



HT

1941 CALENDAR

- SEPTEMBER** 9—School Opens
20—P. C. vs. Alex. City—P. C. 0, Alex. 33
21—First home game of season with Vincent and first night game—
P. C. 25, V. 0. Srs. sponsored dance at gym
- OCTOBER** 3—Students go to State Fair, played Talledega—P. C. 7, T. 41
7—F.F.A.-F.H.A. kid party
11—Panthers defeated Lincoln—P. C. 12, L. 6
Homecoming dance
12—Srs. go to Tuscaloosa
18—P. C. vs. Ashland—P. C. 0, A. 6
24—Commercial Club initiation
25—Jr.-Sr. party
31—Halloween Carnival
- NOVEMBER** 1—Heflin vs. Pell City—P. C. 6, H. 0
8—Lincoln vs. Pell City—P. C. 18, L. 6
15—Columbiana vs. Pell City
21—Thanksgiving Holidays and Thanksgiving Dance
22—Pell City vs. Leeds—P. C. 6, L. 6
- DECEMBER** 6—Basketball season opens
16—F.F.A. and F.H.A. party and Srs. get their rings
17—Glee Club Concert
19—Three one-act plays
23—Christmas Holidays
31—Commercial Club Watch Party
- JANUARY** 3—Pell City vs. Spring Garden—P. C. 16, S. G. 24
7—Pell City vs. Columbiana—P. C. 37, C. 12
8—Exams begin
14—Talledega vs. Pell City—P. C. 24, T. 19
15—School closes because of flu
21—Football Banquet
29—F.H.A. Initiation
- FEBRUARY** 6—Panthers go to Sewanee, Tennessee
14—All the girls get candy and hearts
19—Panthers vs. West End—P. C. 27, W. E. 24
21—Pell City vs. Anniston—P. C. 23, A. 21
22—Millerville put Pell City out of the tournament, 12-43
- MARCH** 14—Annual Staff Party
21—Commercial Club trip to New Orleans
27-29—A.E.A.
28—Dance
- APRIL** 15—Dramatic Club presents "Song of My Heart"
18—Junior-Senior Banquet
21—Pell Mell issued
25—Glee Club concert and piano recital
- MAY** 2—Senior Play
3—Senior Picnic
4—Baccalaureate
5—Class Night
6—Graduation

PELL MELL



Above: Helen Jackson, Hub Lovell, Miss James, Harold Williams, Tommie Skelton, Edwin Holladay, Oliver Kendrick, Fred Bowlin, and Clemmie Henderson.

PELL MELL STAFF

<i>Editor-in-Chief</i>	Edwin Holladay	<i>Sport Editor</i>	Harold Williams
<i>Art Editor</i>	Helen Jackson	<i>Business Manager</i>	Hub Lovell
<i>Class Editor</i>	Clemmie Henderson	<i>Assistant Bus. Mgr.</i>	Fred Bowlin
<i>Club Editor</i>	Tommie Skelton	<i>Photographer</i>	Oliver Kendrick
	<i>Faculty Advisor:</i> Virginia James		

If the 1941 PELL MELL is well accepted by its readers, we, the Staff, will feel repaid for the work we have done. We are proud of the progress we have made over publications of previous years and take pleasure in presenting our book to the faculty, students, and friends of PCHS.

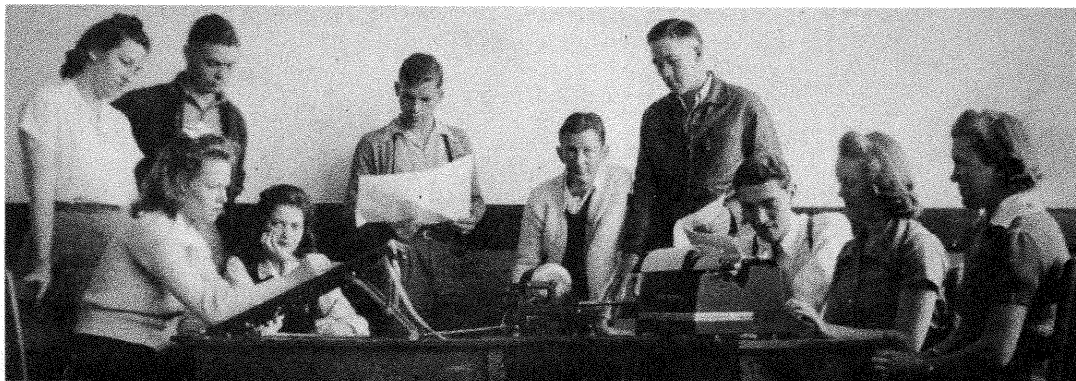
COMMERCIAL CLUB CHRONICLE

CCC STAFF

<i>Editor</i>	Edwin Holladay	<i>Typists</i>	Violet Baswell
<i>Business Manager</i>	Nathan Lewis		Charles Smith
<i>Art</i>	Margaret Holladay		Sara Scott
<i>Social</i>	Helen Jackson		Fred Bowlin
<i>Sport</i>	Harold Williams	<i>Faculty Advisor</i>	Julia Bazemore

The CCC has attracted attention throughout the school and community this year. It offers a pleasing combination of humor and school news to the reader. Though only one year old, the CCC is already one of the best assets of PCHS. Congratulations to the staff on the year's achievements.

Below: Miss Bazemore, Margaret Holladay, Nathan Lewis, Helen Jackson, Edwin Holladay, Harold Williams, Charles Smith, Fred Bowlin, Sara Scott, and Violet Baswell.



FOOTBALL



DOWN FRONT: Frank Stitt. FIRST ROW: Heflin Smith, J. T. Bowman, Reeves Truitt, William Windsor, Gerome Chambers, Roger Newton. SECOND ROW: Edwin Holladay, captain; Delbert Smith, L. C. Smith, Guice Osborn, Floyd Wyatt, Nathan Lewis, Harold Williams, manager; THIRD ROW: Hascal Willingham, Aaron Lanier, Cecil Gray, Claxton Alexander, Ferrel Burt, R. V. Sweatt, James Mize, Coach Roberson. FOURTH ROW: Donald Bain, John Hudson, Joe Gore, Richard Taylor, Pete Nixon. NOT SHOWN: Hub Lovell, alternate captain; Julian Bain, halfback; and Oliver Kendrick, tackle.

SCHEDULE

		Pell City	Opponent
Sept. 20	Alexander City	0	33
Sept. 27	Vincent	25	0
Oct. 3	Talladega	7	41
Oct. 11	Lincoln	12	6
Oct. 18	Ashland	0	6
Oct. 25	Jrs. vs. Srs.	0	0
Nov. 1	Heflin	6	0
Nov. 8	Lincoln	18	6
Nov. 15	Columbiana	6	6
Nov. 22	Leeds	6	6

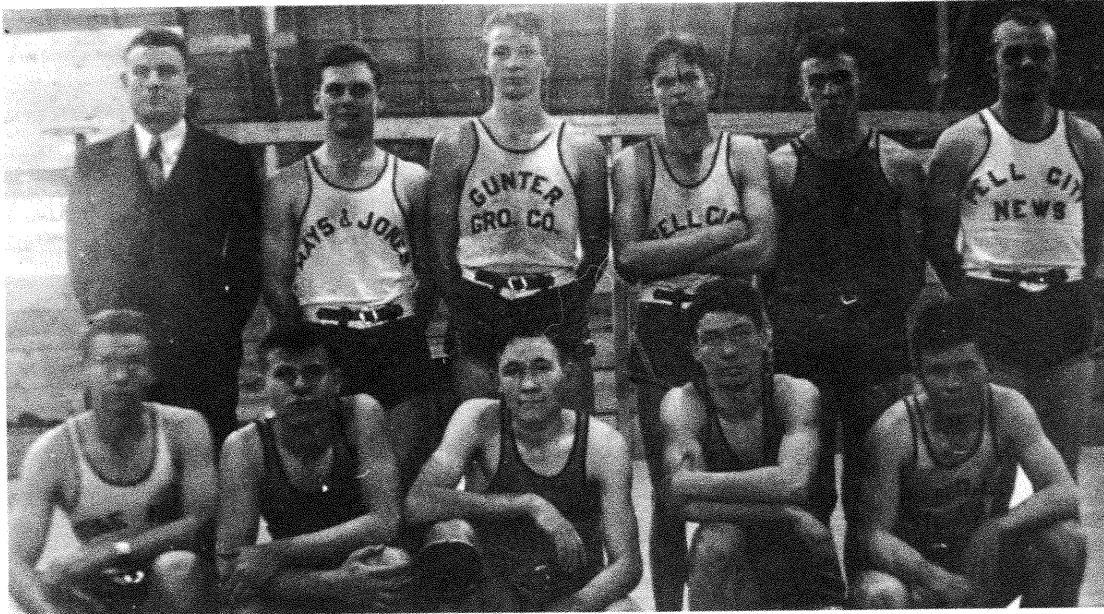
LETTER CLUB

Any one, to become a member of the PCHS Letter Club, must have played in at least half of the actual quarters of the games of either football or basketball during one season. Other requirements may be set up by the coach at any time. Cheer leaders become members after serving for one season on the cheering squad.



LEFT, FIRST ROW: Reeves Truitt, Edwin Holladay, Margaret Holladay, Louise Reeves, Tommie Skelton, Hub Lovell, president; Alvin Hurst. SECOND ROW: Coach Roberson, Delbert Smith, Joe Gore, Heflin Smith, Harold Williams, Smith Willis, L. N. Barber. THIRD ROW: Julian Bain, Cicil Gray, Gerome Chambers, Claxton Alexander, Floyd Wyatt, J. T. Bowman, Oliver Kendrick.

BASKETBALL



FIRST ROW: Delbert Smith, Edwin Holladay, Charles Smith, Herbert Lovell, Heflin Smith.
 SECOND ROW: Coach Roberson, Charles Huffstutler, Gerome Chambers, Robert Castleberry,
 Shorty Hurst, L. C. Smith.

SCHEDULE

		Pell City	Opponent
Dec. 5	Fayetteville	24	32
Dec. 10	Calera	20	21
Dec. 11	Fayetteville	14	39
Dec. 13	Lincoln	31	28
Jan. 3	Spring Garden	16	24
Jan. 7	Columbiana	37	12
Jan. 8	Ashville	17	12
Jan. 10	Jacksonville	40	32
Jan. 14	Talledega	24	19
Jan. 16	Cornet	16	18
Jan. 17	Alex City	24	18
Jan. 20	West End	32	18
Jan. 23	Talledega	24	22
Jan. 24	Alex City	30	20
Jan. 29	Jacksonville	16	25
Jan. 31	Comer	24	28
Feb. 4	Spring Garden	22	24
Feb. 6	Emma Sansome	29	21
Feb. 6	Ft. Payne	32	33
Feb. 7	Sewanee, Tenn.	24	30
Feb. 11	Comer	24	30
Feb. 13	Columbiana	32	7
Feb. 14	Ashville	29	28
Feb. 19	West End	27	24
Feb. 21	Anniston	23	21
Feb. 21	White Plains	32	11
Feb. 22	Millerville	12	43

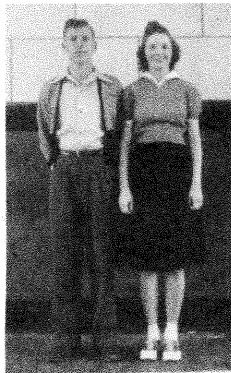
HALL OF FAME

	Answers To	Noted For	Likes	Dislikes
Margaret Holladay	Shorty	Boy Friends	Onions	Home Ec.
Fred Bowlin	Bessie	Singing	Sweet Music	Reality
Helen Jackson	Hel	Dirty Shoes	Acting	Phy. Ed.
Virginia Ogletree	Jenny	Fingernails	Playing Hookey	Biology
Louise Reeves	Lilly	Looks	New Shoes	City Life
Joe Machovec	Slim	Rosy Cheeks	English	
Elsie Ruth Truitt	Wus	Diamond Ring	Gordon	Singing
Julian Bain	J. Bain	Football	Trumpets	Loafers
James Mize	Pedro	Wit	Publicity	Red Shirts
Claxton Alexander	Clack	Laziness	Food	Sleeping
Maggie Roe	Maggie	Giggling	Shorthand	Dictation
Luther Willis	Luke	Sparkin'	Women	Work
Violet Baswell	Tender Greens	Eating	Bowling	Nothing
Allene Hayes	Lene	Flirting	Boys	Attention
Gera Holland	Pee Wee	Flirting	Variety	"Steadies"
Bertha Smith	Bert	Smile	Friendliness	B's
Patty Nell Stine	Pat	Primping	Gordan Bain	Early Rising
Charles Huffstutler	Hot Stuff	Blushing	Basketball	Girls
Clemmie Henderson	Ma	Younguns	Pa	Okra
Anne Wilson	Anne	Beauty	Nobody Knows	
Martha Lou Fagan	Flagan	?	Piano Playing	?
Tommie Helen Skelton	Tommie	Athletics	Hub	Bookkeeping
Mary June Smith	June	Man-trapping	Cooter	Brunettes
Nancy Funderburg	Mancy	Squealing	Matchmaking	Low Grades
Helen Kerr	Helen	Studying	Sports	Noise
Oliver Kendrick	O.K.	Pardon Myself	Loafing	Studying
Gerome Chambers	Jerry	Basketball	His Hair	Interference
Edwin Holladay	Edard	Football	Girls	Gossipers
Frances Bradshaw	Frances	Gossiping	Bowling	School
Imogene Hammett	Jean	Talking	Debating	Low Grades
Joseph Maples	Preacher	Courting	Pops Gentsch	Bootlegging
Sara Scott	Red	Eating	Miss Bazemore	Dignified Seniors
Hazel Brown	Hazel	Working	Reading	Lectures
Sars Jo Hardwick	Sarie	Reading	A Good Time	Classical Singing
Charles Hoyle	Bitty	Neatness	Jr. III's	Initiations
Charles Smith	Charlie	Basketball	Hill's	Disorderliness
<u>Lena Mae Walker</u>	<u>Lena Mae</u>	<u>Debates</u>	<u>A's</u>	<u>Mischief</u>
Harold Williams	Pa	Children	Ma	Economics
L. C. Smith	Combination	Popularity	Shooting Bull	Attending Classes
Reeves Truitt	Reeves	Cuteness	Ford	Ida Sue

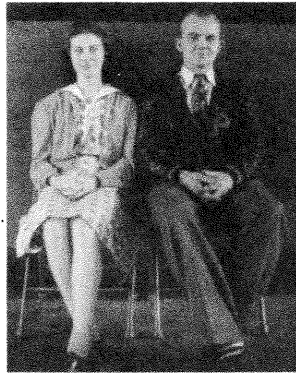
WHO'S WHO

Miss Pell High.....Elsie Ruth Truitt
 Most Popular Girl.....Martha Lou Fagan
 Most Handsome Boy..Charles Huffstutler
 Most Studious.....Helen Kerr
 Most Athletic Boy.....Julian Bain
 Wittiest Student.....James Mize
 Best Actor.....Fred Bowlin
 Cutest Boy.....Reeves Truitt
 Biggest Flirt.....Alene Hayes

Best All 'Round Boy.....Edwin Holladay
 Most Popular Boy.....L. C. Smith
 Prettiest Girl.....Ann Wilson
 Dignified Senior.....Lena Mae Walker
 Most Athletic Girl.....Tommy Skelton
 Biggest Gossiper.....Frances Bradshaw
 Best Actress.....Helen Jackson
 Cutest Girl.....June Smith
 Ladies' Man.....Harold Williams



Holladay, Truitt



Fagan, Smith



Huffstutler, Wilson



Kerr, Walker



Bain, Skelton



Mize, Bradshaw



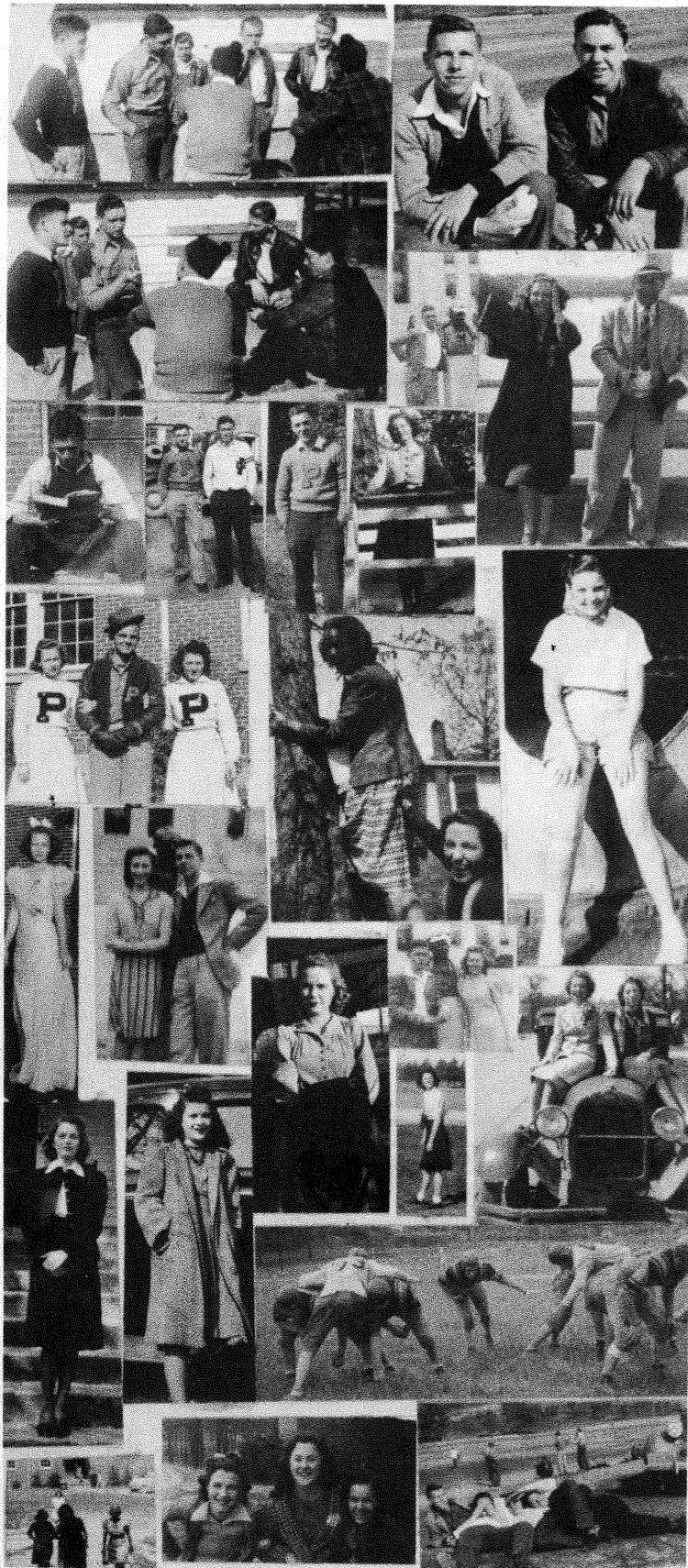
Jackson, Bowlin



Truitt, Smith



Hayes, Williams

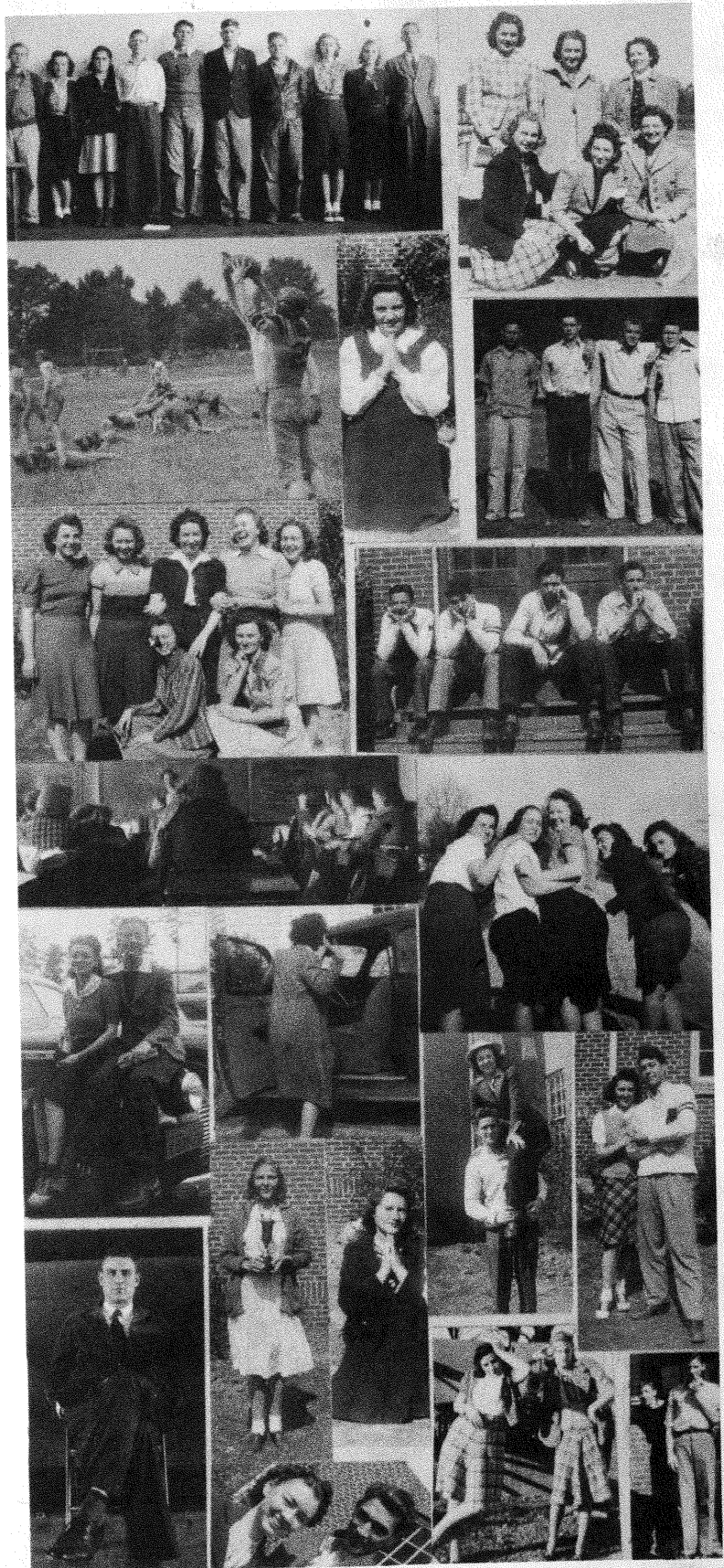


SNAP -

Whitehouse scene
 Why so serious, pals? . . .
 Tell 'em, Buckwheat . . .
 Nathan and the governor.
 . . . going places? . . . a
 rare scene . . . Just Shorty,
 Oliver, and . . . Shorty . . .
 confident . . . Three P's
 . . . Boost 'er Tootsie . . .
 umm, what limbs
 looking pretty . . . who's
 the other man, Edard? . . .
 going places, too?
 there's that man again . . .
 why this face, Nell? . . .
 Two peaches on Methu-
 saleh . . . O, Hel-en . . .
 Where's Cooter, Mary
 June? . . . What a hole!
 . . . pick up the lunch
 paper, girls . . . blushing
 beauties . . . what's com-
 ing next? . . .

SHOTS

Don't tell me they lost the
 debate . . . Just school girls
 . . . Ah, completed . . .
 Praying for what? . . .
 some of the heartthrobs . . .
 Ma, her younguns & Toot-
 sie . . . disgusted . . . Just
 teaching . . . what's the
 idea, girls? . . . just a slip
 of the arm, Harold? . . .
 No back talk . . . a lovely
 loving cup . . . what,
 another prayer? . . . He-
 man Bain . . . why the
 change, Tommie? . . . His
 Feet's too big . . . Pa, Ma's
 with another man . . . Are
 you drafted, girls? . . .
 Playing innocent.



SHOTS

A face in the sky . . .
 Where's the snuff? . . .
 Watch, Kids, Ma's on the
 left . . . A cute pair . . .
 Margret and Freck . . . Oh,
 you two-timer . . . Coca-
 nut Grove . . . High in the
 sky . . . So comfortable . . .
 Just posing . . . What a
 man . . . Believe he's got
 'im . . . Shirt tail's out . . .
 He's not good to eat, Mar-
 tha Lou . . . Guess what . . .
 Can't find nothin' but a
 tree . . . Two faces and a
FIGURE . . . Left over
 from last year.
 to the text.





PELL CITY DEPARTMENT

AVONDALE MILLS
OF ALABAMA



Durable Denims That Will Endure!!

The function of industry is to take certain things that grow on the surface of the earth, or are buried beneath the surface, and convert them into sizes, shapes, and colors that the public wants; and to do that at the lowest possible cost, without any exploitation along the route.

The Avondale Mills local denim mill is the main industry of Pell City, manufacturing quality denims that enjoy a world-wide market, besides furnishing homes, education, and amusement for innumerable citizens.

**HENDERSON'S
BEAUTY SHOPPE**

*For
Perfect
Satisfaction*



Compliments of

UNION STATE BANK

Pell City, Alabama

38 Years of Service

Member Federal Deposit
Insurance Corporation

Trade at

MAYS AND JONES

Where you can outfit your whole family

Quality — Service
At Fair Prices

**LEE'S
SUPER
GROCERY**

*We Specialize in
Fancy Groceries,
Meats,
and
Jazz Feeds*

Phone

70

TRY THE
Rexall
 FIRST
 PELL CITY DRUG COMPANY

Congratulations to the Class of 1941

May the future bring you every success

J. S. BOWLIN

"Quantity, Quality, and Prices at Their Best"

Dealer in

General Merchandise, Fresh Meats and Feeds

RAGLAND, ALABAMA

First in Sales

First in Value

First in Beauty

AUTHORIZED



Sales and Service

Lawley Chevrolet Co.

"Where Friend Meets Friend"

PELL CITY
 HARDWARE
 COMPANY, Inc.

Electric and Gas Appliances

Sporting Goods

Implements

Furniture

Stoves

Ranges

Phone

37

The Pell City News

Alabama's Big Weekly
Newspaper
Commercial Printing

Edmund Blair '24 Publisher

St. Clair Telephone Co.

Special Rates

on

All Holidays, Every Week Night

and

Weekends from 7 P.M. Saturday
till 4:30 A.M. Monday

No Tax on calls under 49c

Compliments of

Woco Pep Service Station

Gas, Oil Cigarettes,
Candy and Drinks

Trade at

MITNICK'S

for

Dry Goods —

Clothing —

Shoes

Every Day's a Holiday

in a

DODGE or PLYMOUTH
HOLLADAY'S

For

CAKES - PIES - ROLLS

That make you want more

See

Mrs. U. C. Martin

Kilgroe Funeral Home

AMBULANCE SERVICE

Affiliated with

Brown Service Insurance Co.

Congratulations, Seniors!

E. A. BORDERS

Ragland, Alabama

<p>St. Clair Ice Company</p> <p><i>A block of ice never gets out of order!</i></p>	<p>Pell City Has Everything to make life worth living. Why not make it <i>your</i> home?</p> <p>SUMTER COGSWELL Mayor Pell City</p>
<p>St. Clair Motor Co. Sales Service</p> <p>Have you tried "The New Ford Ride"</p> <p>Phone 141</p>	<p><i>Compliments of</i> JOHN L. COX "When in Ragland" visit Ragland Drug Company Ragland Alabama</p>
<p><i>Compliments of</i> Retail Clerks International Protective Association Local 1440 Ragland Alabama</p>	<p>River Fish Chicken Black & White Gardens Good Food — Well Served JACK CLINE Owner</p>
<p>COHEN'S STORE Ladies' Ready to Wear Men's Furnishings On the Corner Across from Union State Bank</p>	<p><i>Compliments of</i> BUKACEK MOTOR CO. Phone 29</p>
<p><i>Compliments of</i> M. L. LEWIS</p>	<p><i>Compliments of</i> MODEL BARBER SHOP</p>
<p><i>Compliments of</i> Pemberton Service Station Ragland Alabama</p>	<p><i>Best Wishes</i> DANIEL BEAUTY SHOPPE For Efficient Service</p>
<p>Eat at the PELL CITY CAFE Home Cooking</p>	<p>E. P. FREEMAN, Sr. Justice of Peace Office Located on 2nd Floor of Court House</p>
<p>FOOSE HARDWARE CO. The House of Service The Place of Better Hardware</p>	<p>WOOLEY'S 5 & 10 Always Something New Ragland Alabama</p>

<p style="text-align: center;">COMMUNITY DRY CLEANERS Service That Satisfies</p> <p>Phone 72</p>	<p style="text-align: center;">J. L. RAGLAND Dealer in Staple and Fancy Groceries, and School Supplies</p> <p>Phone 95</p>			
<p style="text-align: center;">RAPID SHOE HOSPITAL for First Class Work with The Best of Materials</p>	<p style="text-align: center;"><i>Compliments of</i> CHAMPION GROCERY Ragland, Alabama</p>			
<p style="text-align: center;">J. W. MARTIN We sell for fun, not for profit Wattsville, Alabama</p>	<p style="text-align: center;"><i>Compliments of</i> FRAMBROUGH'S CAFE AND FURNITURE STORE Ragland Alabama</p>			
<p style="text-align: center;"><i>COMPLIMENTS OF</i></p> <table style="width: 100%; border: none;"> <tr> <td style="width: 33%; vertical-align: top;"> <p>G. B. Ritch, Jr. J. D. Abbott</p> </td> <td style="width: 33%; vertical-align: top;"> <p>Harlan Willis Lester C. Smith Ullman Roberson</p> </td> <td style="width: 33%; vertical-align: top;"> <p>Robert N. Walker Red McCullough</p> </td> </tr> </table>		<p>G. B. Ritch, Jr. J. D. Abbott</p>	<p>Harlan Willis Lester C. Smith Ullman Roberson</p>	<p>Robert N. Walker Red McCullough</p>
<p>G. B. Ritch, Jr. J. D. Abbott</p>	<p>Harlan Willis Lester C. Smith Ullman Roberson</p>	<p>Robert N. Walker Red McCullough</p>		
<p style="text-align: center;"><i>Compliments of a Friend</i></p>				